





# Heron Isles Phase Two C-3

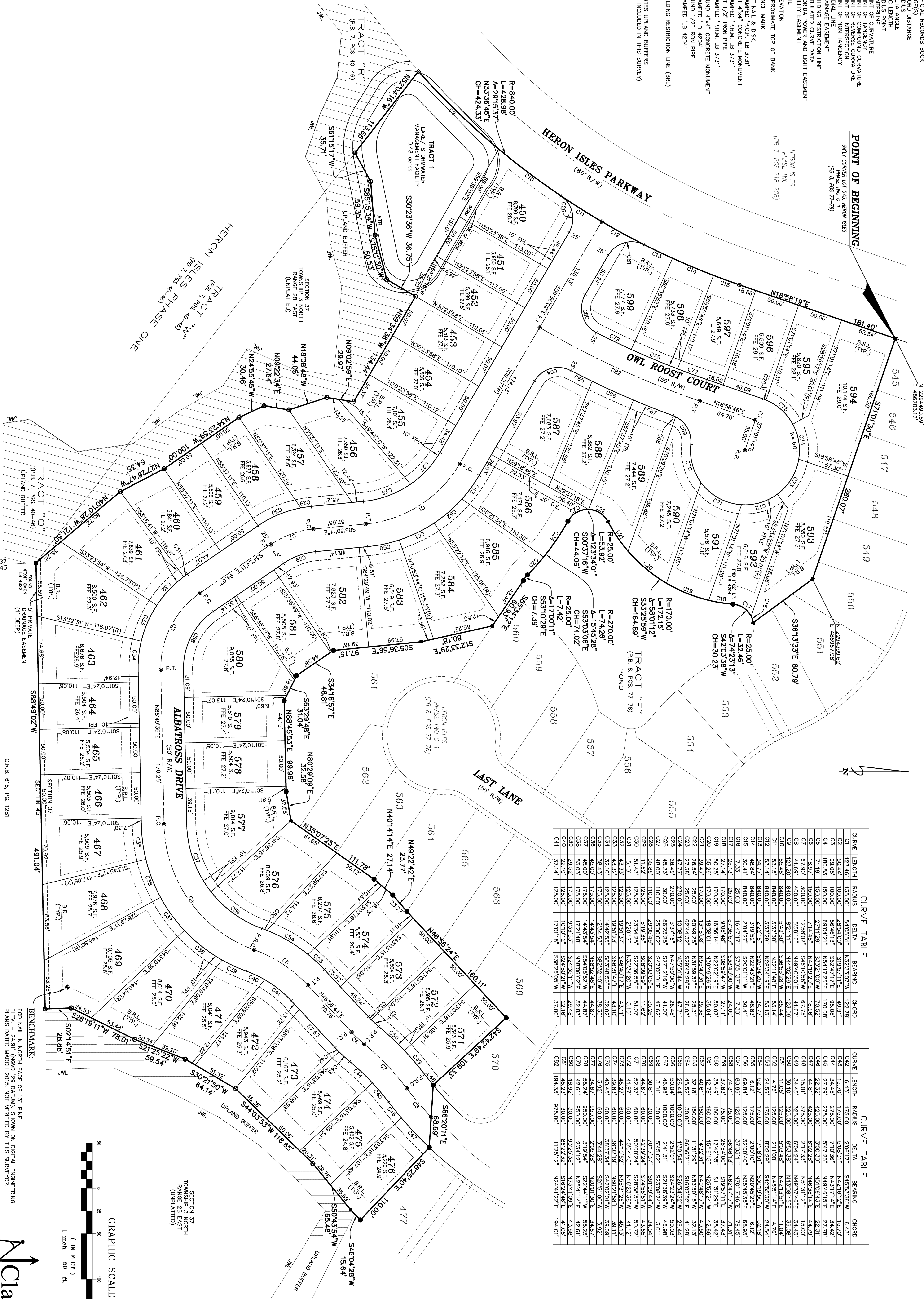
A PORTION OF SECTION 37, TOWNSHIP 3 NORTH, RANGE 28 EAST, NASSAU COUNTY, FLORIDA.

- LEGEND**
- R/W = RIGHT OF WAY
  - P.B. = PLAT BOOK
  - O.R.B. = OFFICIAL RECORDS BOOK
  - C.O.D. = CHORD DISTANCE
  - R = RADIUS
  - L = DELTA ANGLE
  - R.P. = RADIUS POINT
  - P.C. = POINT OF CURVATURE
  - P.T. = POINT OF TANGENCY
  - P.C.C. = POINT OF COMPOUND CURVATURE
  - P.O.N. = POINT OF NON-INTERSECTING
  - D.E. = DRAINAGE EASEMENT
  - B.R.L. = BUILDING RESTRICTION LINE
  - C.H.E. = RAILED CURVE DATA
  - U.E. = UTILITY EASEMENT
  - N.L. = NAIL
  - ELEV. = ELEVATION
  - AIRB. = APPROXIMATE TOP OF BANK
  - BM. = BENCH MARK
  - STAMPED P.C.P. LB 3731' = SET NAIL & BENCH MARK
  - STAMPED P.R.M. LB 3731' = SET 4"x4" CONCRETE MONUMENT
  - STAMPED P.R.M. LB 3731' = SET 1/2" IRON PIPE
  - STAMPED P.R.M. LB 3731' = FOUND 4"x4" CONCRETE MONUMENT
  - STAMPED LB 4204' = STAMPED LB 4204'
  - STAMPED LB 4204' = FOUND 1/2" IRON PIPE
  - STAMPED LB 4204' = STAMPED LB 4204'
  - BUILDING RESTRICTION LINE (B.R.L.)
  - ▨ DENOTES UP-LAND BUFFERS (NOT INCLUDED IN THIS SURVEY)

## POINT OF BEGINNING

SWLY CORNER LOT 545, HERON ISLES  
(P.B. 7, POS. 218-228)  
(P.B. 8, POS. 17-78)

HERON ISLES  
PHASE TWO  
(P.B. 7, POS. 218-228)



CURVE TABLE				
CURVE	LENGTH	RADIUS	DELTA	BEARING
C1	42.46'	135.00'	54.035°	N32.537°W
C2	126.68'	135.00'	54.035°	N32.537°W
C3	99.08'	100.00'	56.461°	S62.471°E
C4	180.83'	150.00'	69.042°	N54.178°E
C5	71.91'	150.00'	27.128°	S33.210°W
C6	18.97'	150.00'	7.448°	N43.920°E
C7	61.97'	300.00'	12.962°	S46.108°W
C8	124.87'	800.00'	6.581°	N48.505°E
C9	124.87'	800.00'	6.581°	N48.505°E
C10	85.46'	840.00'	5.945°	S49.500°W
C11	53.14'	840.00'	3.372°	N42.148°E
C12	53.14'	840.00'	3.372°	N42.148°E
C13	48.84'	840.00'	3.192°	N42.432°E
C14	48.84'	840.00'	3.192°	N42.432°E
C15	7.33'	25.00'	16.217°	S70.517°W
C16	25.33'	25.00'	57.235°	S33.400°W
C17	25.33'	25.00'	57.235°	S33.400°W
C18	27.14'	170.00'	9.084°	S69.594°W
C19	50.25'	170.00'	16.581°	N42.021°E
C20	55.29'	170.00'	18.390°	N39.926°E
C21	58.46'	110.00'	20.034°	S20.036°E
C22	58.46'	110.00'	20.034°	S20.036°E
C23	51.43'	125.00'	23.142°	S22.385°E
C24	47.77'	270.00'	10.091°	N55.514°W
C25	28.46'	270.00'	5.378°	N47.590°W
C26	48.23'	30.00'	86.232°	S77.121°W
C27	48.00'	110.00'	20.034°	S20.036°E
C28	58.46'	110.00'	20.034°	S20.036°E
C29	51.43'	125.00'	23.142°	S22.385°E
C30	51.43'	125.00'	23.142°	S22.385°E
C31	5.10'	125.00'	2.201°	N35.240°W
C32	43.33'	125.00'	19.513°	S46.401°E
C33	43.33'	125.00'	19.513°	S46.401°E
C34	38.10'	125.00'	14.435°	S62.321°W
C35	38.10'	125.00'	14.435°	S62.321°W
C36	43.00'	175.00'	14.435°	S62.321°W
C37	43.00'	175.00'	14.435°	S62.321°W
C38	29.59'	175.00'	9.703°	S42.501°W
C39	29.59'	175.00'	9.703°	S42.501°W
C40	37.14'	125.00'	17.016°	S38.205°W

CURVE TABLE				
CURVE	LENGTH	RADIUS	DELTA	BEARING
C41	6.43'	175.00'	2.061°	S65.535°W
C42	14.45'	270.00'	7.036°	N43.174°E
C43	34.45'	275.00'	15.476°	N49.461°E
C44	22.92'	425.00'	22.331°	N61.094°E
C45	18.01'	375.00'	27.735°	N63.312°E
C46	18.01'	375.00'	27.735°	N63.312°E
C47	18.01'	375.00'	27.735°	N63.312°E
C48	18.01'	375.00'	27.735°	N63.312°E
C49	11.05'	125.00'	5.034°	N42.148°E
C50	4.76'	125.00'	1.242°	N45.314°E
C51	24.56'	175.00'	8.722°	S42.501°W
C52	6.12'	175.00'	1.708°	S30.950°W
C53	6.12'	175.00'	1.708°	S30.950°W
C54	6.12'	175.00'	1.708°	S30.950°W
C55	6.12'	175.00'	1.708°	S30.950°W
C56	6.12'	175.00'	1.708°	S30.950°W
C57	6.12'	175.00'	1.708°	S30.950°W
C58	6.12'	175.00'	1.708°	S30.950°W
C59	6.12'	175.00'	1.708°	S30.950°W
C60	6.12'	175.00'	1.708°	S30.950°W
C61	6.12'	175.00'	1.708°	S30.950°W
C62	6.12'	175.00'	1.708°	S30.950°W
C63	6.12'	175.00'	1.708°	S30.950°W
C64	6.12'	175.00'	1.708°	S30.950°W
C65	6.12'	175.00'	1.708°	S30.950°W
C66	6.12'	175.00'	1.708°	S30.950°W
C67	6.12'	175.00'	1.708°	S30.950°W
C68	6.12'	175.00'	1.708°	S30.950°W
C69	6.12'	175.00'	1.708°	S30.950°W
C70	6.12'	175.00'	1.708°	S30.950°W
C71	6.12'	175.00'	1.708°	S30.950°W
C72	6.12'	175.00'	1.708°	S30.950°W
C73	6.12'	175.00'	1.708°	S30.950°W
C74	6.12'	175.00'	1.708°	S30.950°W
C75	6.12'	175.00'	1.708°	S30.950°W
C76	6.12'	175.00'	1.708°	S30.950°W
C77	6.12'	175.00'	1.708°	S30.950°W
C78	6.12'	175.00'	1.708°	S30.950°W
C79	6.12'	175.00'	1.708°	S30.950°W
C80	6.12'	175.00'	1.708°	S30.950°W
C81	6.12'	175.00'	1.708°	S30.950°W
C82	6.12'	175.00'	1.708°	S30.950°W

