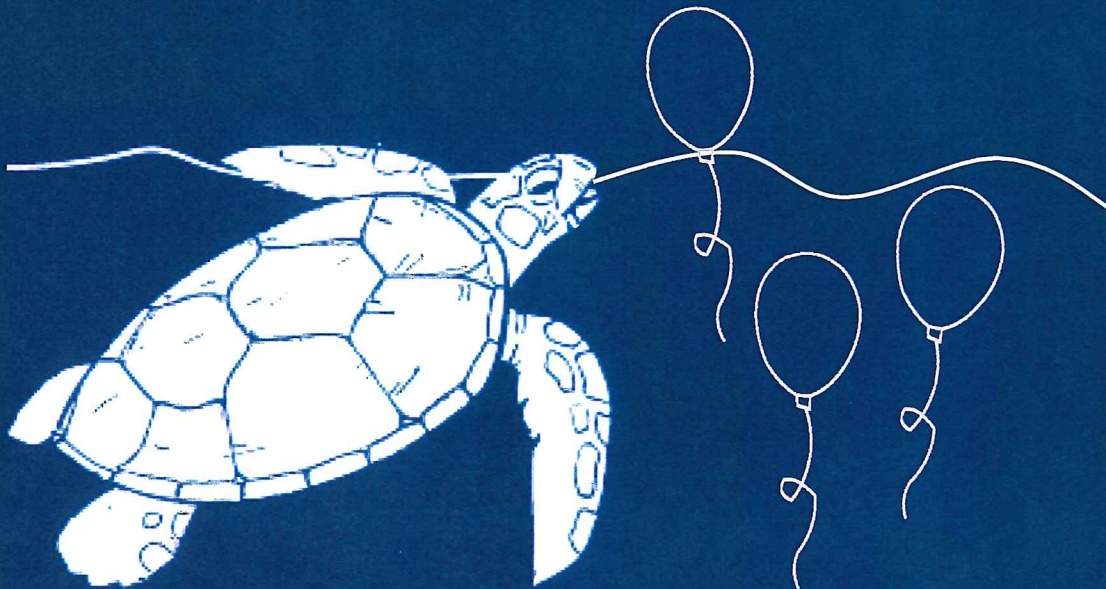


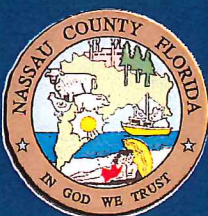
# NOTICE

## REGARDING BALLOONS

Deflated balloons resemble jelly fish, a common prey item for sea turtles.



In an effort to promote the safety and protection of sea turtles, Nassau County and Loggerhead Marineline Center have partnered to discourage the use of balloons.



For more information, visit  
[marinelife.org](http://marinelife.org)



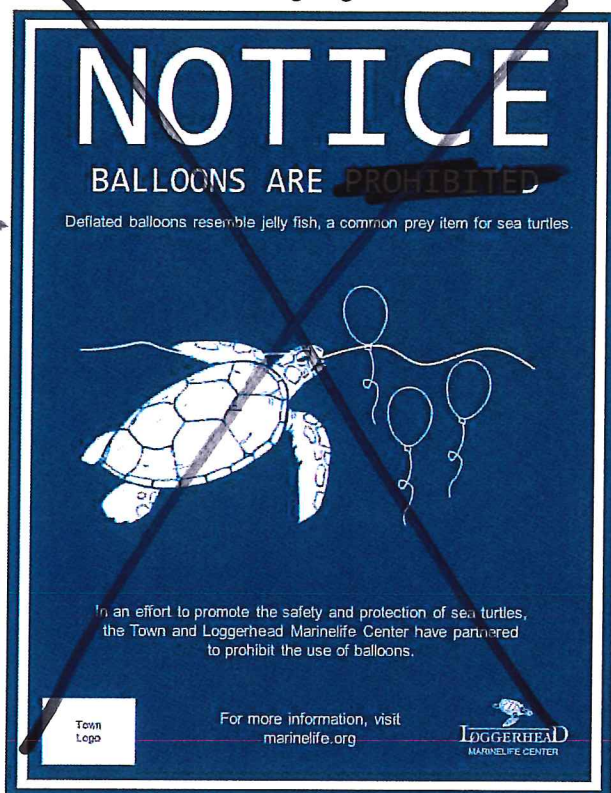


see mock-up for Nassau

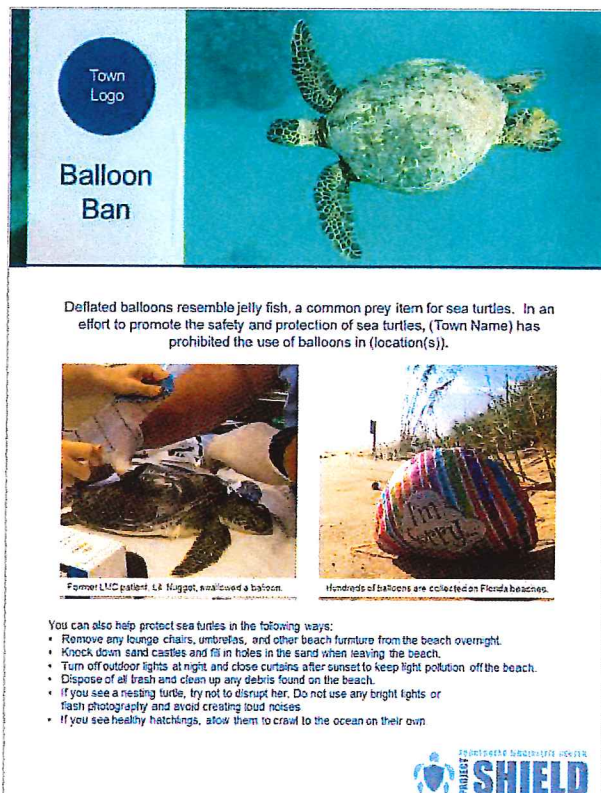


Balloon Ban Participation Options  
14200 US Highway One, Juno Beach, FL 33408  
Tommy Cutt | [tcutt@marinelife.org](mailto:tcutt@marinelife.org)  
Demi Fox | [dfox@marinelife.org](mailto:dfox@marinelife.org)

### Signage



### Educational Materials



Towns may choose to participate in the Balloon Ban in any capacity listed below. Additional participation may include [town webpage notices](#) and [press releases](#).

#### Level 1

- Signage installed or educational materials distributed

#### Level 2

- Signage installed
- Educational materials distributed

#### Level 3

- Signage installed
- Educational materials distributed
- Town ordinance adopted

### Benefits Available to Partners

- Sea turtle seminars led by Loggerhead Marineline Center staff, on site or at the center
- Private guided tours of Loggerhead Marineline Center
- Featured on Loggerhead Marineline Center Conservation webpage
- Partnership announced on Loggerhead Marineline Center social media accounts

Exhibit "A"

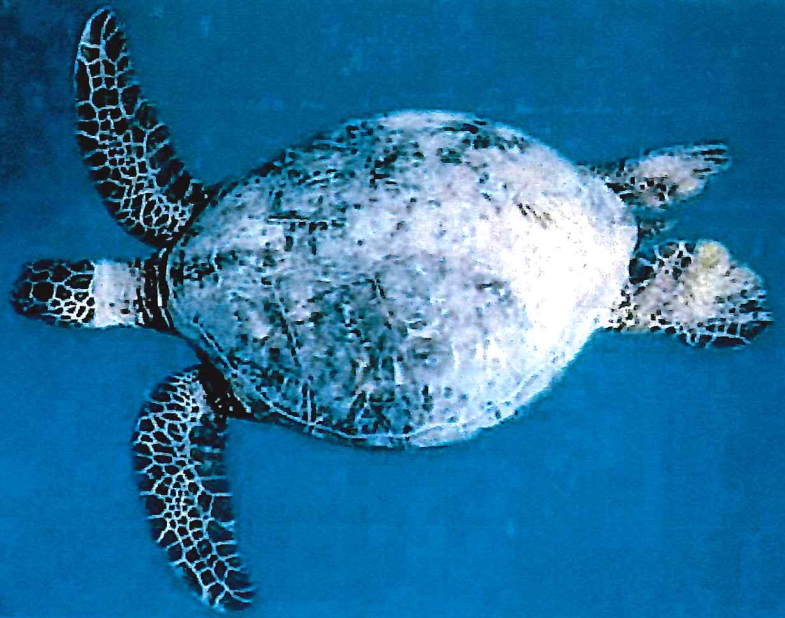
The below pictured green sea turtle (*Chelonia mydas*), being treated at Loggerhead Marinelife Center, ingested a plastic balloon.





Town  
Logo

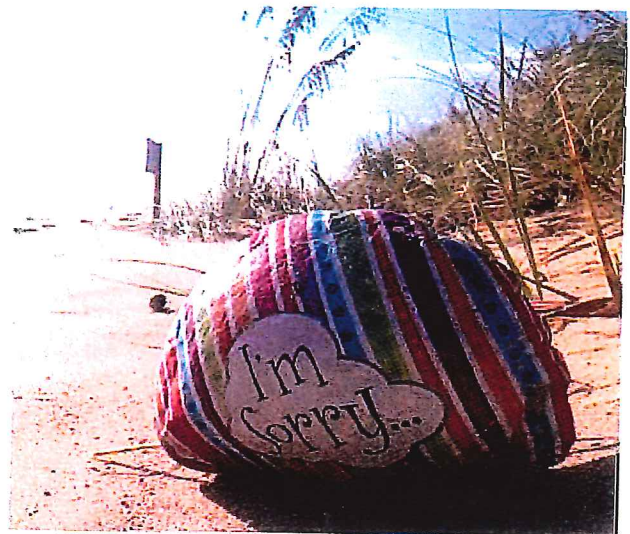
## Balloon Ban



Deflated balloons resemble jelly fish, a common prey item for sea turtles. In an effort to promote the safety and protection of sea turtles, (Town Name) has prohibited the use of balloons in (location(s)).



Former LMC patient, Lil' Nugget, swallowed a balloon.



Hundreds of balloons are collected on Florida beaches.

You can also help protect sea turtles in the following ways:

- Remove any lounge chairs, umbrellas, and other beach furniture from the beach overnight.
- Knock down sand castles and fill in holes in the sand when leaving the beach.
- Turn off outdoor lights at night and close curtains after sunset to keep light pollution off the beach.
- Dispose of all trash and clean up any debris found on the beach.
- If you see a nesting turtle, try not to disrupt her. Do not use any bright lights or flash photography and avoid creating loud noises.
- If you see healthy hatchlings, allow them to crawl to the ocean on their own.