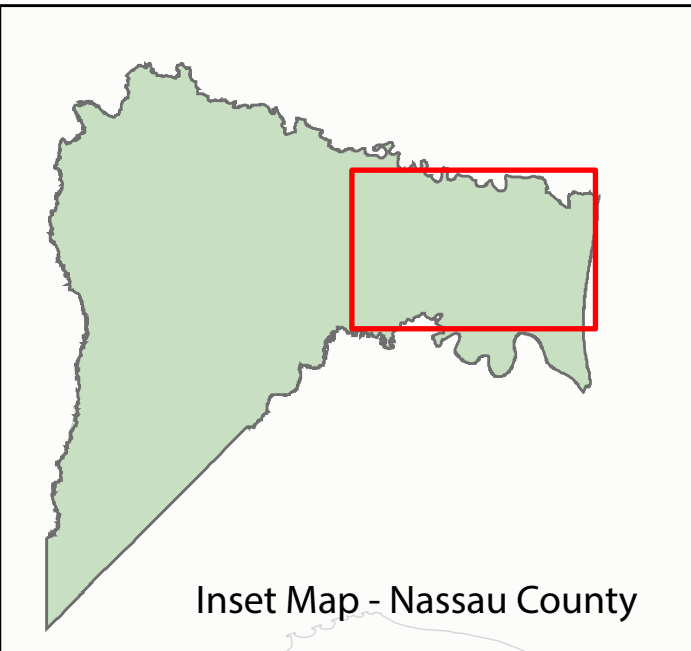
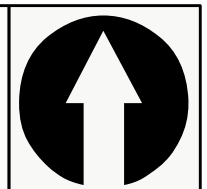
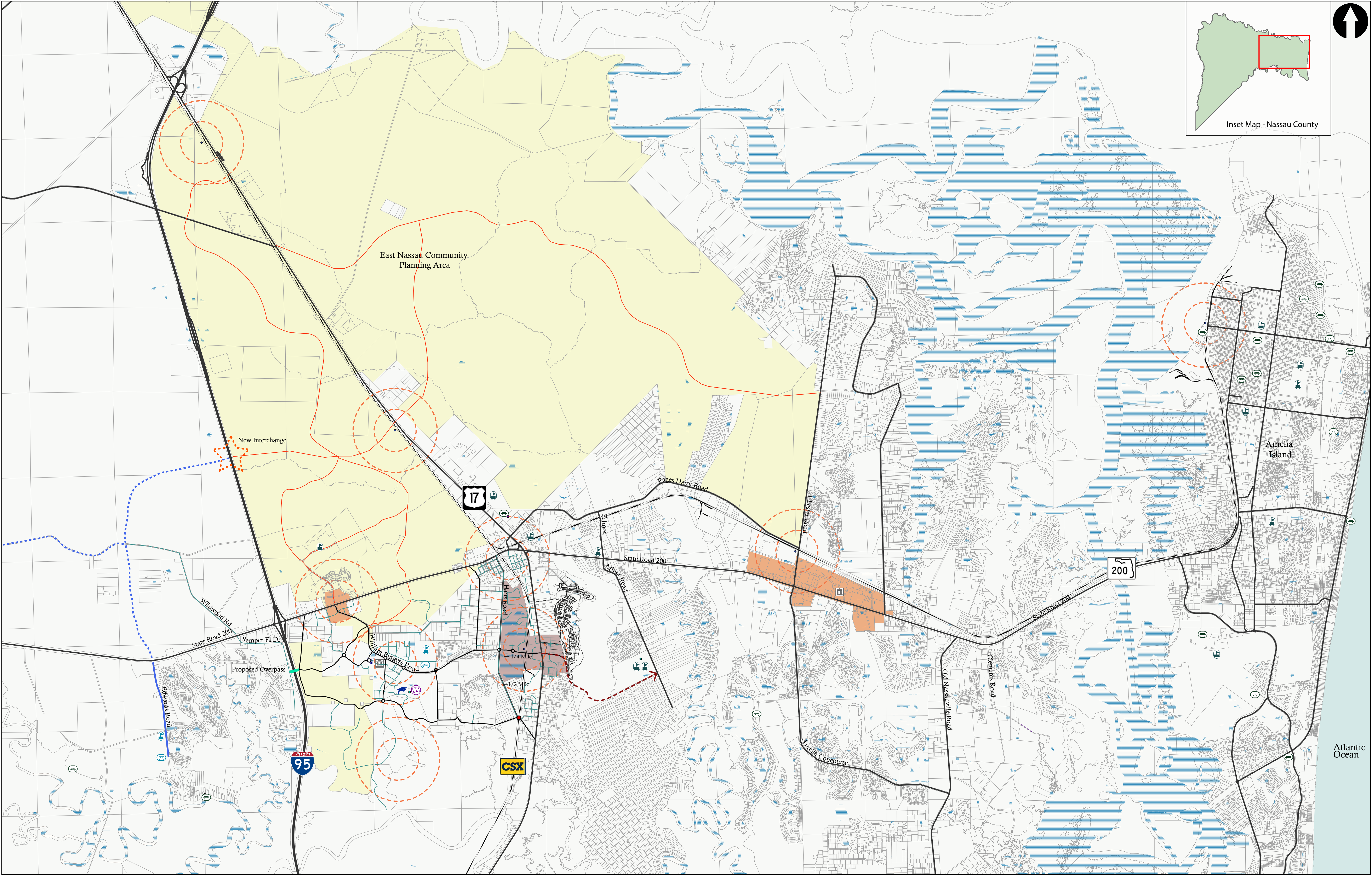


L

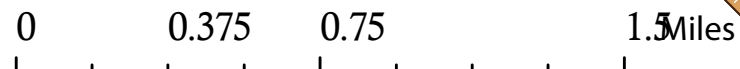
Regional
Transportation Map



Regional Map
YULEE
Nassau County
March 13, 2019

Legend

- | | | | | | | | |
|--------------------------|--|------------------------------|--------------------|--------------------------------------|--------------------------------|--------------|-------------------|
| William Burgess District | East Nassau Community Planning Area | Village Center Radii | Existing Parks | Non-WBD/ENCPA Mobility Network Roads | General Nuclei of TOD Stations | College | Future Park |
| Railroads | Commercial Centers (excluding Amelia Island) | Surface Waters | Existing Schools | WBD Mobility Network Roads | Police Station | Edwards Road | Proposed Overpass |
| Major Roadways | Approximate William Burgess Extension | ENCPA Mobility Network Roads | Government Complex | New Interchange Connectivity | Future School Sites | | |



M

In-text Citations

Sources

“Enhanced State Hazard Mitigation Plan”. Florida Division of Emergency Management. 2018

“Enhanced State Hazard Mitigation Plan” Appendix G: Wildfire Hazard Mitigation Plan Annex”. Florida Division of Emergency Management. 2018

"[A World in Our Backyard: Wetland Functions.](http://www.epa.gov/gmpo/education/pdfs/WorldBackyard3.pdf)" U.S. Environmental Protection Agency Wetlands Division Wetlands Education Materials. Available in an online PDF version at: <http://www.epa.gov/gmpo/education/pdfs/WorldBackyard3.pdf>

“Threats to Wetlands” EPA booklet 843-F-01-002d

“Levees and the National Flood Insurance Program- Improving Policies and Practices”. National Research Council. National Academies Press.

“Nassau County Local Mitigation Strategy 2016-2020”. Nassau County Emergency Management and the Nassau County LMS Task force. December 2015.

Cusack, Harte, Chan, “The Economics of Invasive Species.” Prepared for the Oregon Invasive Species Council. *Oregon State University 2009*

NCFL.COM

FEMA.gov

SJRWMD.com

<https://watersgeo.epa.gov/mywaterway/>

www.floridadisaster.org

<https://plants.ifas.ufl.edu> The University of Florida / IFAS Center for Aquatic and Invasive Plants.

Project for Public Spaces

[Business Case for Placemaking, Urban Land Institute](#)

Florida Association of Public Art Professionals

Association for Public Art

Nassau County Housing Assessment, University of Florida Shimberg Center for Housing Studies, 2018

Nassau County Flood Zones – Effective August 2, 2017 (FEMA Flood Insurance Rate Maps)

Wetlands Mapping Data – National Wetlands Inventory, Florida Land Use Classification Cover System, St. John's River Water Management District

Nassau County Storm Surge Map and Coastal High Hazard Area (area below elevation of Storm Surge Category 1 per Comprehensive Plan Policy CHZ.05.01 and F.S. 163.3178(2)(h).)

National Oceanic and Atmospheric Administration Tides and Currents – Historic Tide Gauge Data, Fernandina Beach (Recording since May 8, 1897)

National Oceanic and Atmospheric Administration Office for Coastal Management – Sea Level Rise Viewer

United States Army Corps of Engineers – Sea-Level Change Curve Calculator

Environmental Protection Agency: Heat Island Effects and Energy Efficient Buildings

Yesterday's Reflections II: Nassau County, Florida by Jan H. Johannes

Fernandina Beach Downtown Historic District Design Guidelines

Cornwall Farm Land Company, North Florida Fruit and Truck Farm Sales Brochure, 1910.

Duany, Andres, Plater-Zyberk, Elizabeth and Speck, Jeff (2000). *Suburban Nation: The Rise of Sprawl and the Decline of the American Dream*. New York, New York: North Point Press, A Division of Farrar, Straus and Giroux.

Pelham, Thomas G. (2010). *Transportation Concurrency, Mobility Fees, and Urban Sprawl in Florida*. The Urban Lawyer. Volume 42/43 issued 4/1/2010.

Florida 2070 Water 2070, Florida Department of Agriculture and Consumer Services, University of Florida Geoplan Center and 1000 Friends of Florida 1000 Friends of Florida, retrieved from <http://1000friendsofflorida.org/florida2070/wp-content/uploads/2017/08/FOF-1080-Newsletter-Spring-2017-v12-web.pdf>

Western Nassau County Technical Assistance Panels, Urban Land Institute (ULI), November 7-8, 2017. Published by the ULI January 2018.

2018 Nassau County, FL Growth Trends Report, Nassau County Department of Planning and Economic Opportunity. Published April 18, 2018.

N

Concept Plan for
Civic Center



**WILLIAM BURGESS DISTRICT
CONCEPT PLAN**
Nassau County • Florida