



**PARKS, RECREATION, AND
OPEN SPACE MASTER PLAN**

NASSAU COUNTY | EST. 1824

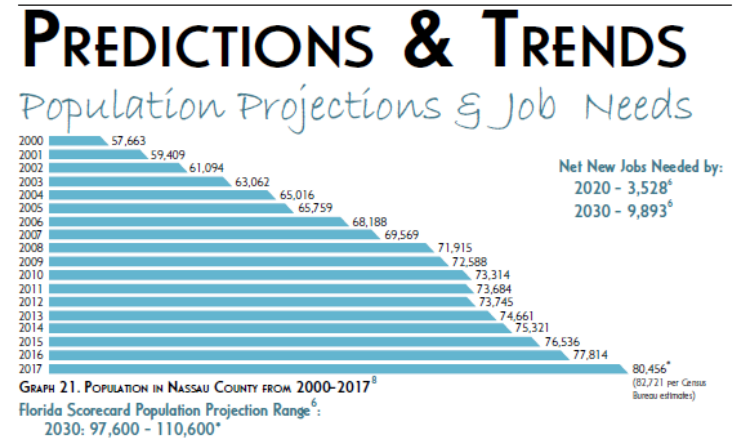
Nassau County **PARKS, RECREATION, AND OPEN SPACE MASTER PLAN**

INTERIM REPORT
May 2020

Purpose of the Plan

- Expect increased demand for parks and recreation facilities and programs
- Desire for a financially viable, functional system
- Desire for developers of new communities to help meet demand
- What are residents' needs and priorities?
- What's our long-range vision for the County's parks and recreation system?
- How so we implement the vision in a fiscally-realistic way?

Population Projections



	LOW	MEDIUM	HIGH
2020	79,800	85,700	91,400
2025	83,300	93,800	103,300
2030	86,100	100,900	115,200
2035	87,800	107,000	126,400
2040	88,500	112,300	136,900
2045	88,500	117,200	147,600

ESTIMATES ARE PROVIDED BY THE BUREAU OF ECONOMIC AND BUSINESS RESEARCH. THESE PROJECTIONS ARE BASED ON 2017 POPULATION ESTIMATES (80,456 BASELINE) FOR 2020, 2025, 2030, 2035, 2040 AND 2045. PROJECTIONS RANGES OF LOW, MEDIUM, AND HIGH.

* 80,456 persons is the population estimate from the University of Florida's Bureau of Economic and Business Research (BEER produces Florida's official state and local population estimates and projections). The US Census Bureau population estimate for 2017 is 82,721 persons. If using US Census Bureau estimates Nassau experienced an astronomical 6.3% increase in population from 2016 to 2017. If we use the percent growth from 2016 to 2017 and simply extrapolate out using both BEER's and the Census Bureau's population estimates as the baseline, Nassau could reach 100,000 persons as early as 2024 and 2021 respectively. The above projections do not specifically take into account "game changers" of regional significances within the local environment, i.e. 3,000-6,000 jobs coming on-line at the Crawford Diamond or Wildlight Commerce Center in a five year time-frame.

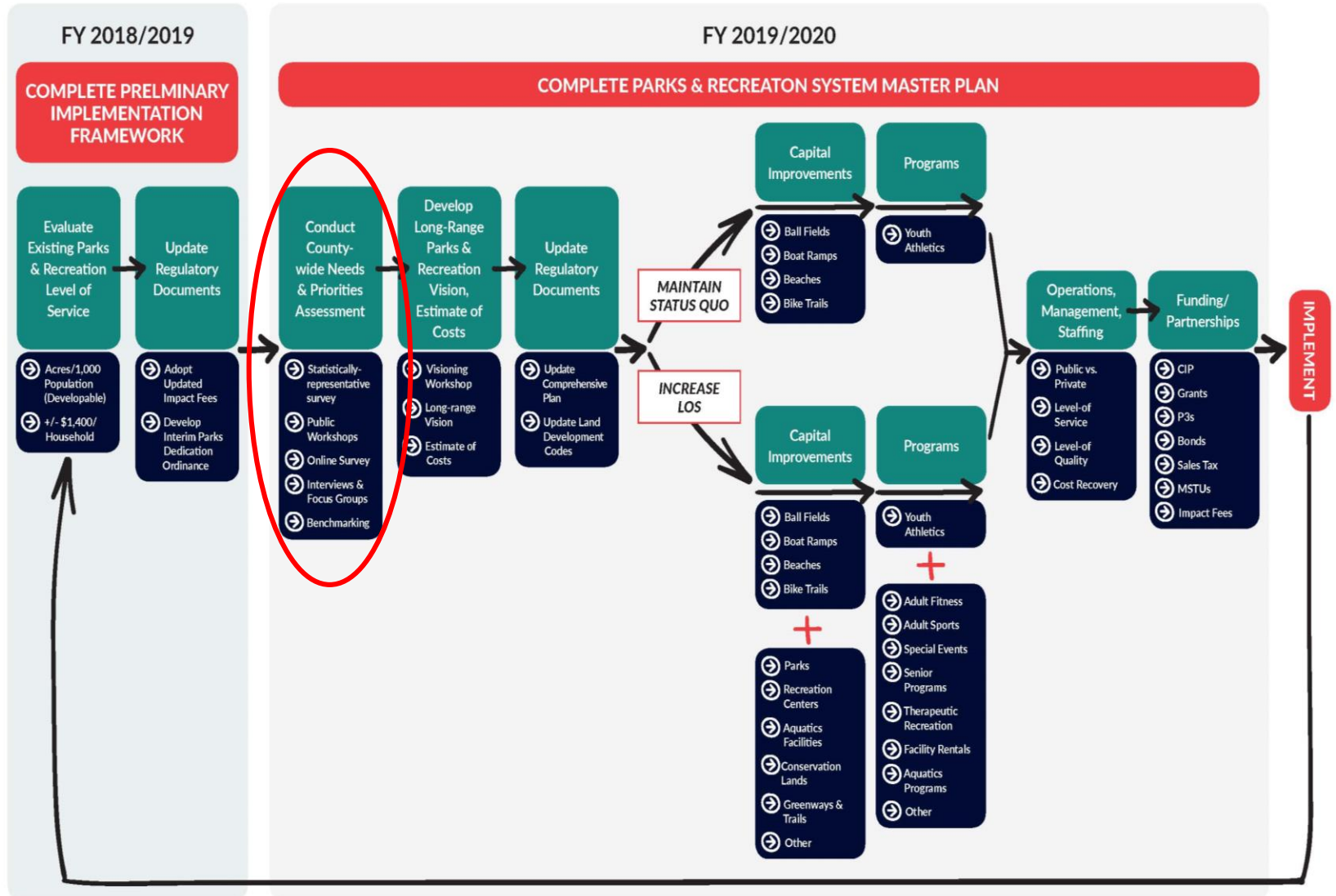
	2017	2018	2019	2020	2021	2022	2023	2024
BEER Baseline Est.	80,456	83,352	86,353	89,462	92,682	96,019	99,476	103,057
Census Baseline Est.	82,721	87,932	93,472	99,361	105,621	112,275	119,348	126,867

2018 Nassau Co Trends Report

“...we share one overarching similarity, a desire to create a **vibrant and dynamic community that provides a high quality-of-life and quality-of-place** for our families and ourselves. The type of community that inspires **connections with the natural and built environment**. A community that promotes **day-to-day social engagement and interpersonal connections amongst community members**. A community that facilitates the creation of **places that are not only beautiful in form but functional for day-to-day life**. A community that prioritizes a generational approach to **securing the unique character of Nassau County**.

While we may disagree as to what constitutes an acceptable quality-of-life threshold or the proper means of ensuring the historic character of our communities are preserved, there are **certain quality-of-life characteristics that are universal – good schools, quality public infrastructure, access to healthcare, entertainment, recreation, and nature, availability of high-wage jobs, fiscal stability and security, and most of all, a sense of place - a sense that you exist in a place that is worth caring about. A place that is worth your personal investment of time, energy and capital. A place you are proud to call home and where you and your family feel secure.”**

Nassau Co Parks & Recreation Vision



Preliminary Implementation Framework

2019 Nassau County O&M,
Pop. 86,000

175 Acres

(2 acres per 1,000 pop.)

\$1.1M O&M

(\$13 per capita)

8 FTEs

Comprehensive Plan

Policy ROS.01.04

The County shall acquire, maintain, or manage through agreement, community and regional park facilities to achieve and maintain the adopted levels of service (LOS) shown below.

Type	Service Radius	Minimum Size	Area /1000 Residents	Other Requirements
Community Parks	1- 5 miles	10 Acres	3.35 Acres	
Regional Parks-General	County-wide	30 Acres	10 Acres	
Regional Parks- Beach Access	County-wide	Variable	.25 Acre	At .5 mile linear increments with adequate space for parking
Regional Parks- Boat Facility	County-wide	Variable	.40 Acre	1 ramp lane per 5,000 population

Policy ROS.01.05

In general, the County shall not seek to acquire neighborhood park facilities. Land and improvements for neighborhood parks shall be provided by new development through the site plan review process. Criteria for the location and design of such facilities shall be included in the Land Development Code (LDC), Planned Unit Development (PUD) or Development of Regional Impact (DRI) development order.

Benchmarking

METRIC	EXISTING NASSAU COUNTY	PARK METRICS - NATIONAL	PARK METRICS - FLORIDA COUNTIES	ST. JOHNS COUNTY	AVERAGE	ESTIMATED TOTALS FOR NASSAU 2045
Operating expenses per capita	\$13	\$25 county median	\$82 median	\$52	+/- \$50	\$7.4 M pop. 147,000
Operating expenses per acre	\$6,487	\$6,750/ acre	\$8,103/ acre		+/- \$7,000	\$14 M 2058 ac.
FTEs per 10,000 pop	0.9	7.9 (5 – 11) FTEs/ 10,000	8.2 FTEs/ 10,000		+/- 6	88 FTEs

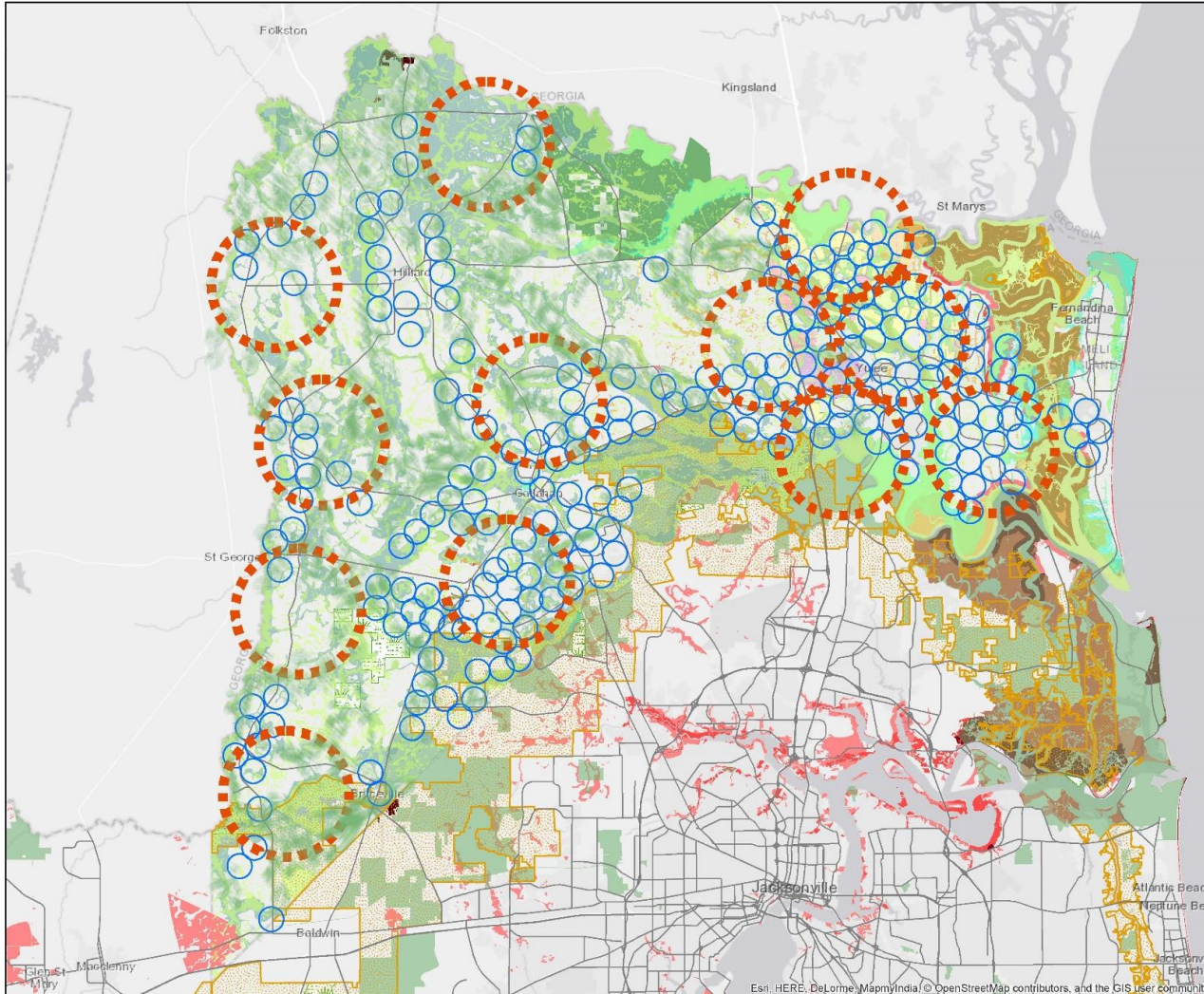
2045 Nassau County O&M,
Pop. 147,000

2,058 Acres

\$7-14M O&M

+/- 80-90 FTEs

Conceptual Long-Range Parks and Open Space Vision

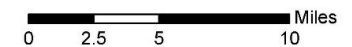


Conservation Habitat Network

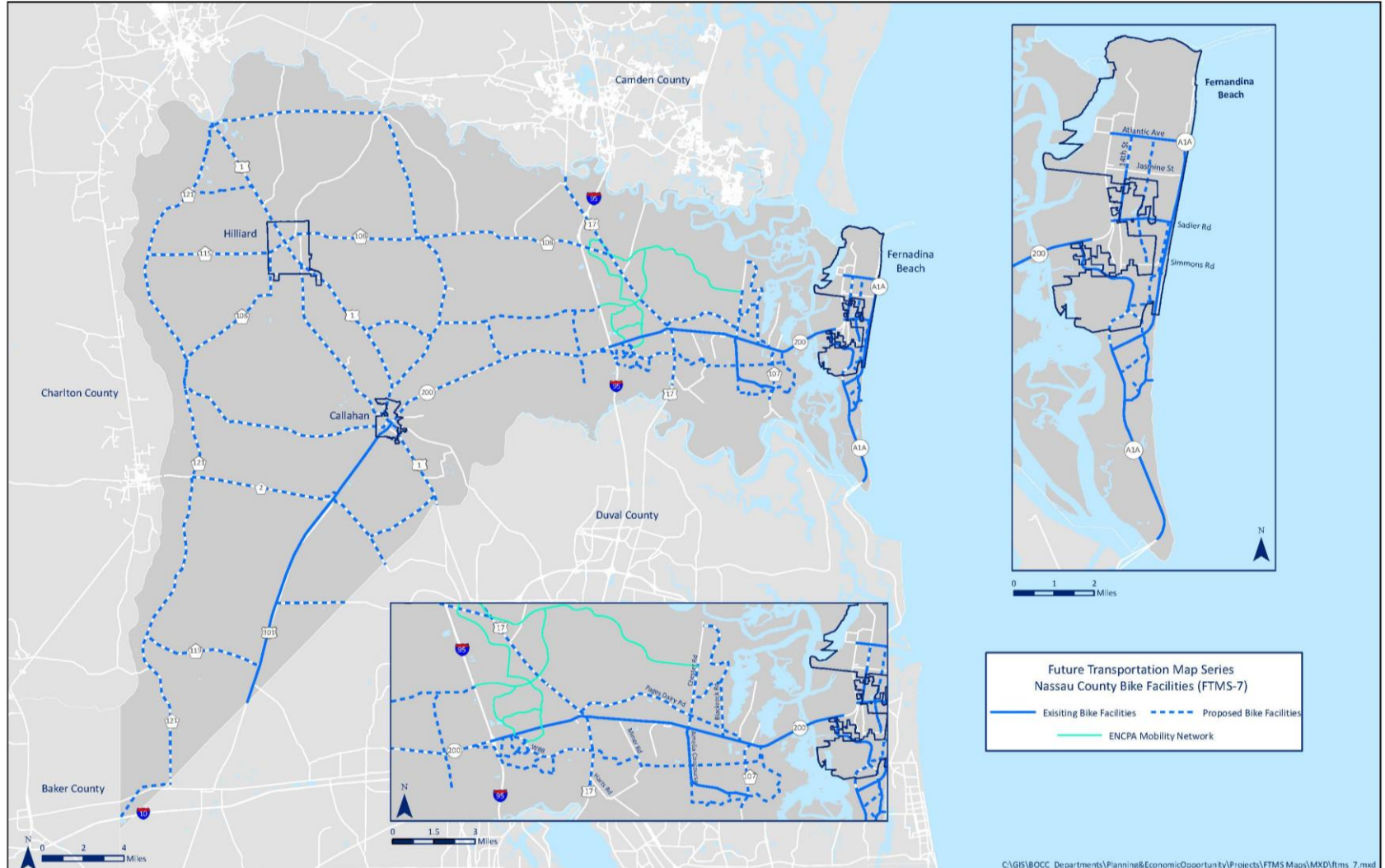
2-24-19



Nassau County provides the data within this exhibit as a public resource of general information for use "as is." Nassau County DPEO (Dept. of Planning and Economic Opportunity) provides this information with the understanding that it is not guaranteed to be accurate, correct or complete and any conclusions drawn from such information are the sole responsibility of the user. Further, Nassau County DPEO



Bikeways and Trails



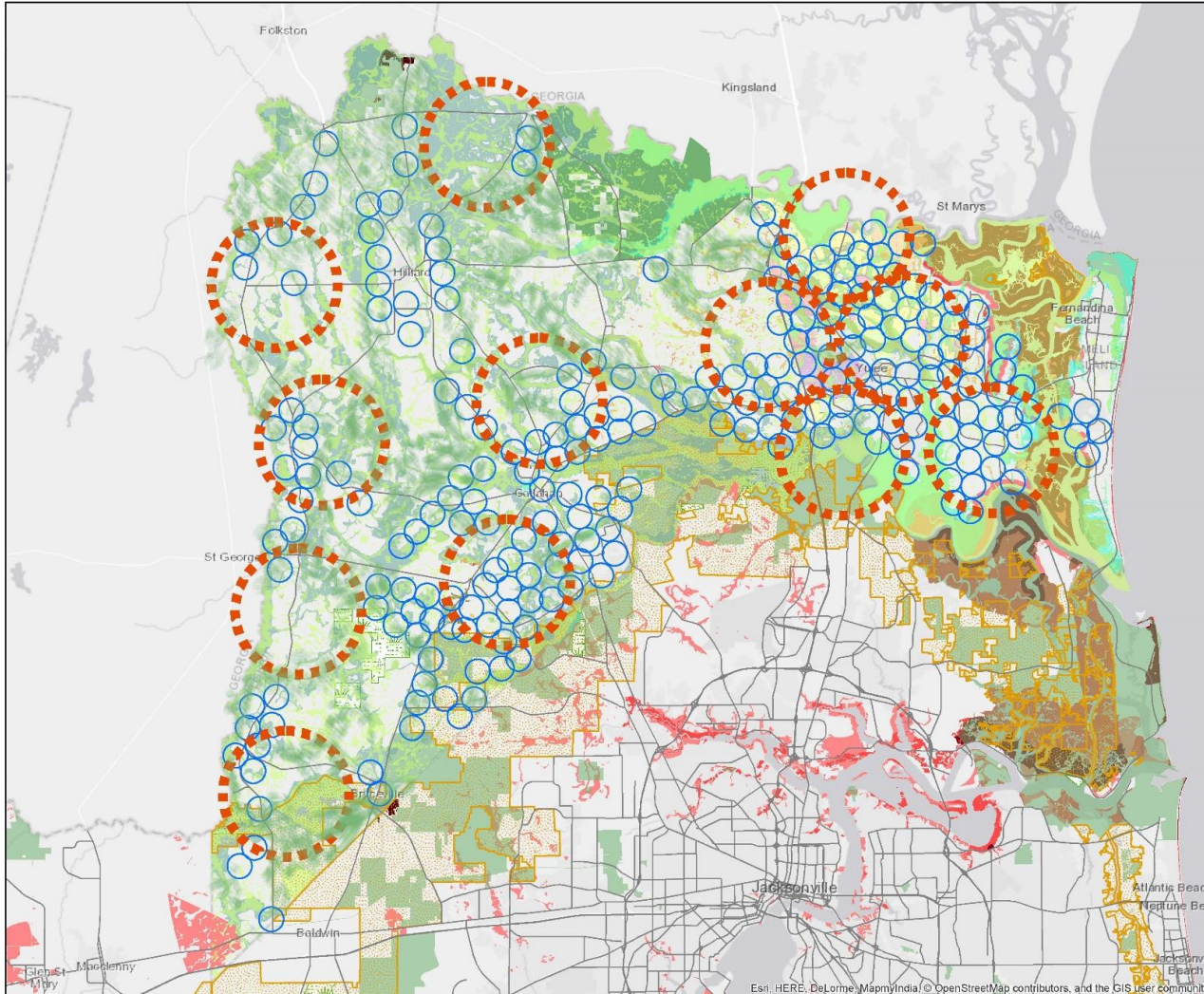
Proposed LOS Metrics

	SERVICE AREAS	ACREAGE LEVEL-OF-SERVICE	ACCESS LEVEL-OF-SERVICE	OTHER LEVELS-OF-SERVICE
LOCAL PARKS	Public or Private Neighborhood(s)	4 Acres/ 1,000 Residents	Suburban: ½ mile service radius, 10-minute walk, 5-minute bike ride	
REGIONAL PARKS	Countywide	14 Acres/ 1,000 Residents	Suburban: 3-5 - mile service radius, depending on radius population density	
			Rural: 5-10 - mile service radius, depending on radius population density	
CONSERVATION AREAS	Countywide			27% of the County's land area protected for water quality, stormwater treatment, floodwater storage, floodplain management, and/or wildlife habitat
INDOOR RECREATION SPACE	Countywide			2 square feet of indoor public/private space per capita
AQUATICS CENTERS	Countywide			TBD

Preliminary Implementation Framework

- Updates to Comprehensive Plan
- Updates to Land Development Code
- Design Prototypes and Standards
- Parks, Recreation Centers, and Aquatics Master Plan
- Bikeways and Trails Master Plan
- Conservation Lands Master Plan
- Level-of-Service Methodology and Metrics
- Impact Fees and/or Other Development Fee Mechanisms
- Land Acquisition & Development Funding
- Management Structure & Funding
- Public/ Private Partnerships
- Joint-Use Memoranda

Conceptual Long-Range Parks and Open Space Vision

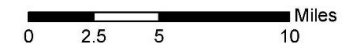


Conservation Habitat Network

2-24-19



Nassau County provides the data within this exhibit as a public resource of general information for use "as is." Nassau County DPEO (Dept. of Planning and Economic Opportunity) provides this information with the understanding that it is not guaranteed to be accurate, correct or complete and any conclusions drawn from such information are the sole responsibility of the user. Further, Nassau County DPEO



Management Responsibilities?

**FIGURE 7: KEY RESPONSIBILITIES OF PARK AND RECREATION AGENCIES
(PERCENT OF AGENCIES)**



Needs Assessment Findings

Planning Process



Needs and Priorities Assessment: A Mixed-Methods, Triangulated Approach

QUANTITATIVE TECHNIQUES:

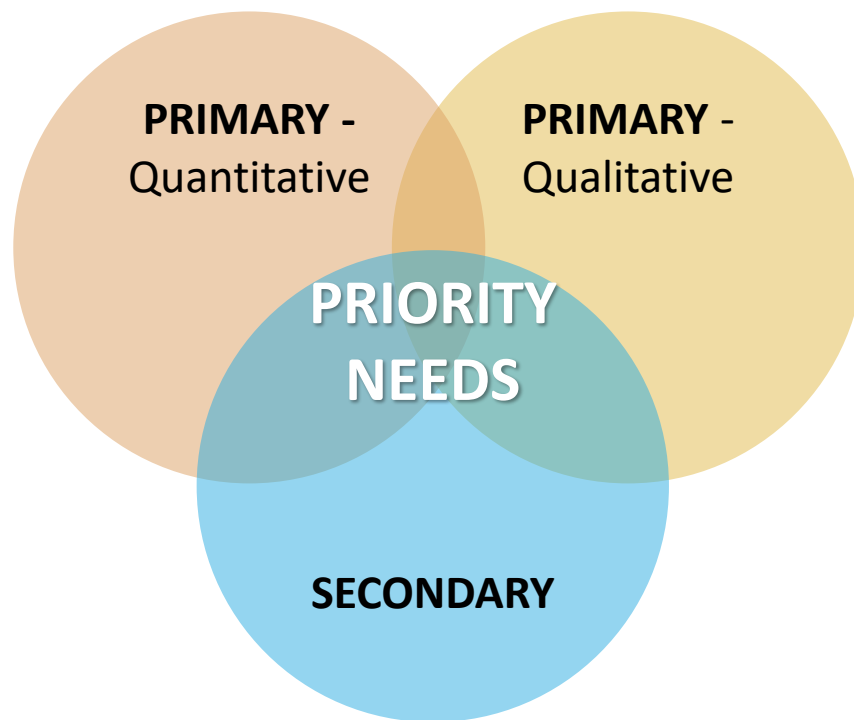
- Level-of-Service Analysis
- Benchmarking
- Statistically-Representative Survey – 431 Respondents
- On-line Survey – 560 Respondents

QUALITATIVE TECHNIQUES:

- Park Evaluations
- Interviews and Focus Groups – 39 Participants
- Public Workshops - 64 Participants

Secondary Data:

- Demographics and Trends Assessment
- Previous Planning Documents



Needs Assessment Summary

FACILITY PRIORITIES

- Multi-Purpose Trails
- Swimming Pools
- Indoor Recreation/Community Centers
- Additional Large Community Parks
- Multi-purpose Sports Fields

PROGRAM PRIORITIES

- | | |
|---|--|
| ▪ Community Special Events | ▪ Arts/Painting/Crafts/Drawing Classes |
| ▪ Fitness/Wellness | ▪ Water Fitness |
| ▪ Nature Programs/Environmental Education | ▪ Camps (Summer, School Break) |
| ▪ Movies in the Park | |

Other priorities include:

- Beach Access
- Natural Areas/Nature Parks
- Restrooms
- Fishing Piers
- Dog Parks
- Shade Features at Parks and Facilities
- Park Shelters and Picnic Areas
- Park Benches/Seating
- Pickleball Courts
- Indoor Gyms (Basketball/Volleyball)
- Bandshell/Pavilion/Amphitheater
- Updates/Repairs to Existing Facilities

1 Existing Conditions & Issues

- 1.1. Overview, Mission, & Vision
 - 1.2. Demographics Analysis
 - 1.3. Health Trends Analysis
 - 1.4. Recreation Trends Analysis
 - 1.5. Existing Parks & Recreation System Analysis
 - 1.6. Existing Programs, Operations, & Maintenance Analysis
 - 1.7. Review of Related Documents
-

2 Needs & Priorities Assessment

- 2.1. Site Evaluations
 - 2.2. Workshops
 - 2.3. Interviews & Focus Group Meetings
 - 2.4. Existing Level-of-Service (LOS) Analysis
 - 2.5. Statistically-Valid Mail Survey
 - 2.6. On-line Survey
 - 2.7. Summary of Needs
-

Demographics



Population:

- 86,340 people live in Nassau County
- County is expected to grow to 112,131 residents by 2034



Age:

- Median age: 45.3
- By 2034, the 55+ age segment will encompass 42% of the population



Race/Ethnicity:

- 89% of the population is White Alone
- 90% of the population will remain White Alone for the next 15 years



Income:

- Median household income: \$73,098
- Median household income is higher than state and national averages

Summary OF DEMOGRAPHIC TRENDS

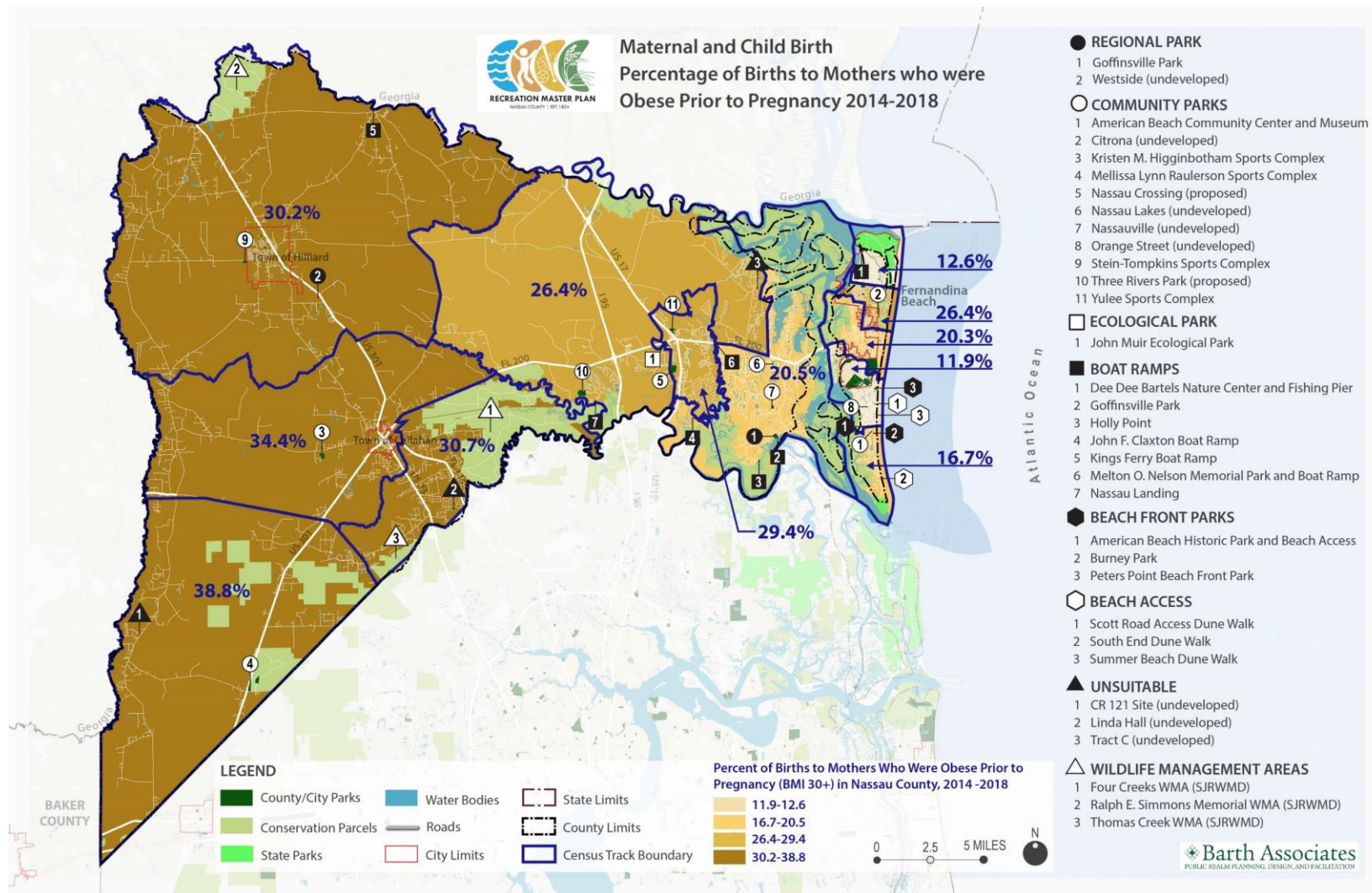
- The County's **annual growth rate (1.99%) is significantly high** (US growth rate is 0.85%), suggesting an increasing need for parks and recreation facilities
- The population is **significantly older**, suggesting the need for targeted programs and facilities
- Racial distribution is predominantly **White Alone**
- Nassau County's averaged per capita income (\$36,868) and median house income (\$73,098) are both well above average. However, there is a **wide disparity in income levels** between residents living in the east and west areas of the County, which has significant implications

Health Trends

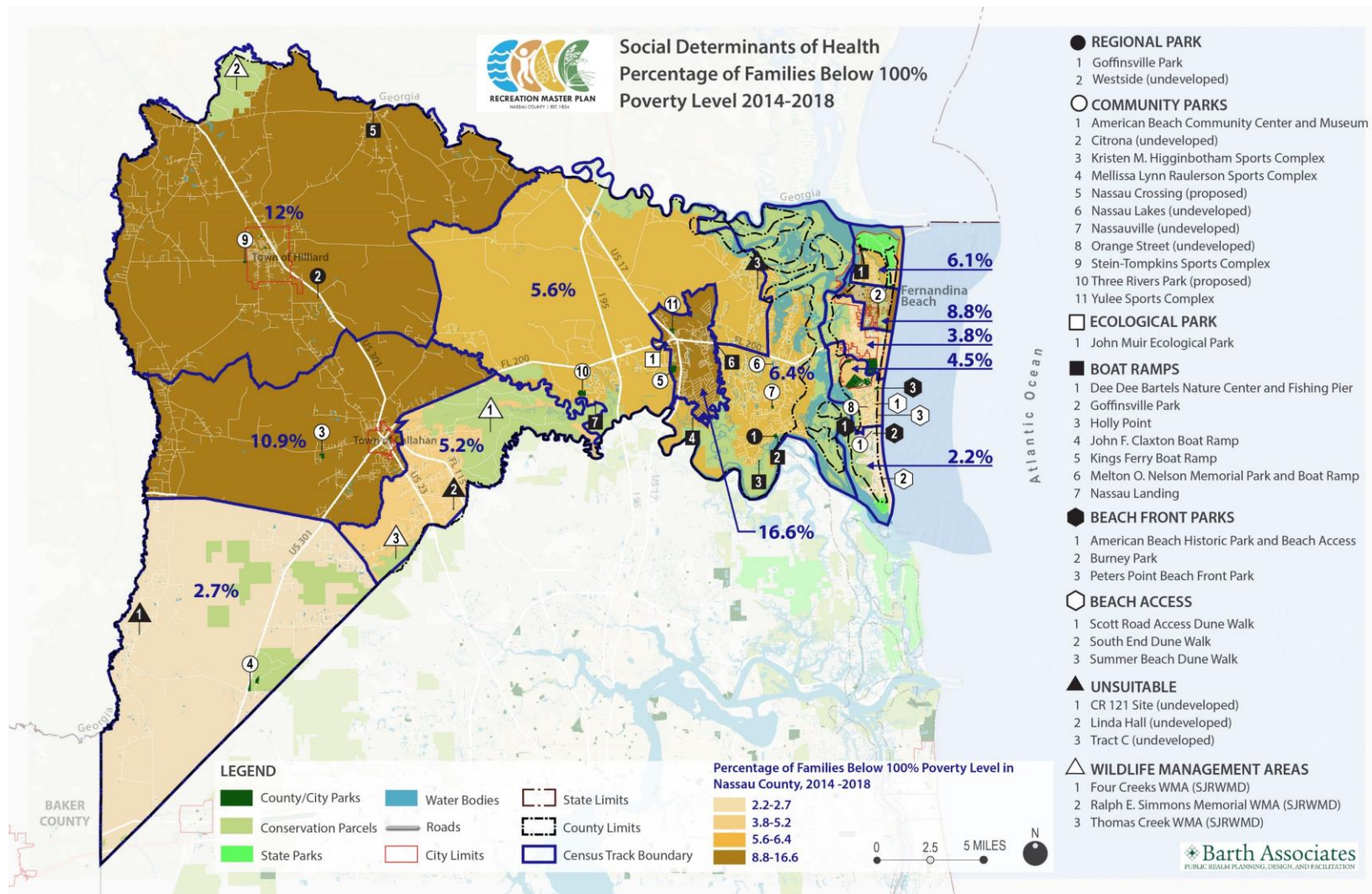
Health Factors (ranked 8 out of 67 counties)				
Health Metric	County Rank (Out of 67)	Nassau County	Florida	Top 10th Percentile US
Health Behaviors (ranked 16 out of 67 counties)				
16				
Adult smoking		16%	14%	14%
Adult obesity		30%	29%	26%
Food environment index		7.6	6	8.7
Physical inactivity		25%	23%	19%
Access to exercise opportunities		68%	80%	91%
Excessive drinking		19%	19%	13%
Alcohol-impaired driving deaths		29%	28%	13%
Sexually transmitted infections		242.2	520.4	152.8
Teen births		26	14	37
Clinical Care (ranked 10 out of 67 counties)				
10				
Uninsured		12%	6%	19%
Primary care physicians		2,180:1	1,050:1	1,660:1
Dentists		3,310:1	1,760:1	1,260:1
Mental health providers		930:1	960:1	310:1
Preventable hospital stays		4,522	4,966	2,765
Mammography screening		44%	49%	37%
Flu Vaccinations		48%	52%	43%
Social & Economic Factors (ranked 5 out of 67 counties)				
5				
High school graduation		91%	89%	96%
Some college		60%	61%	73%
Unemployment		3.8%	4.3%	2.9%
Children in poverty		13%	21%	11%
Income inequality		4.2	4.9	3.7
Children in singleparent households		33%	33%	20%
Social associations		11.8	7.6	21.9
Violent crime		166	420	63
Injury deaths		99	56	57
Physical Environment (ranked 35 out of 67 counties)				
35				
Air pollution particulate matter		8.9	8.8	6.1
Drinking water violations		No		
Severe housing problems		15%	18%	9%
Driving alone to work		83%	80%	72%
Long commute driving alone		49%	38%	15%

Source: County Health Rankings & Roadmaps, www.countyhealthrankings.org

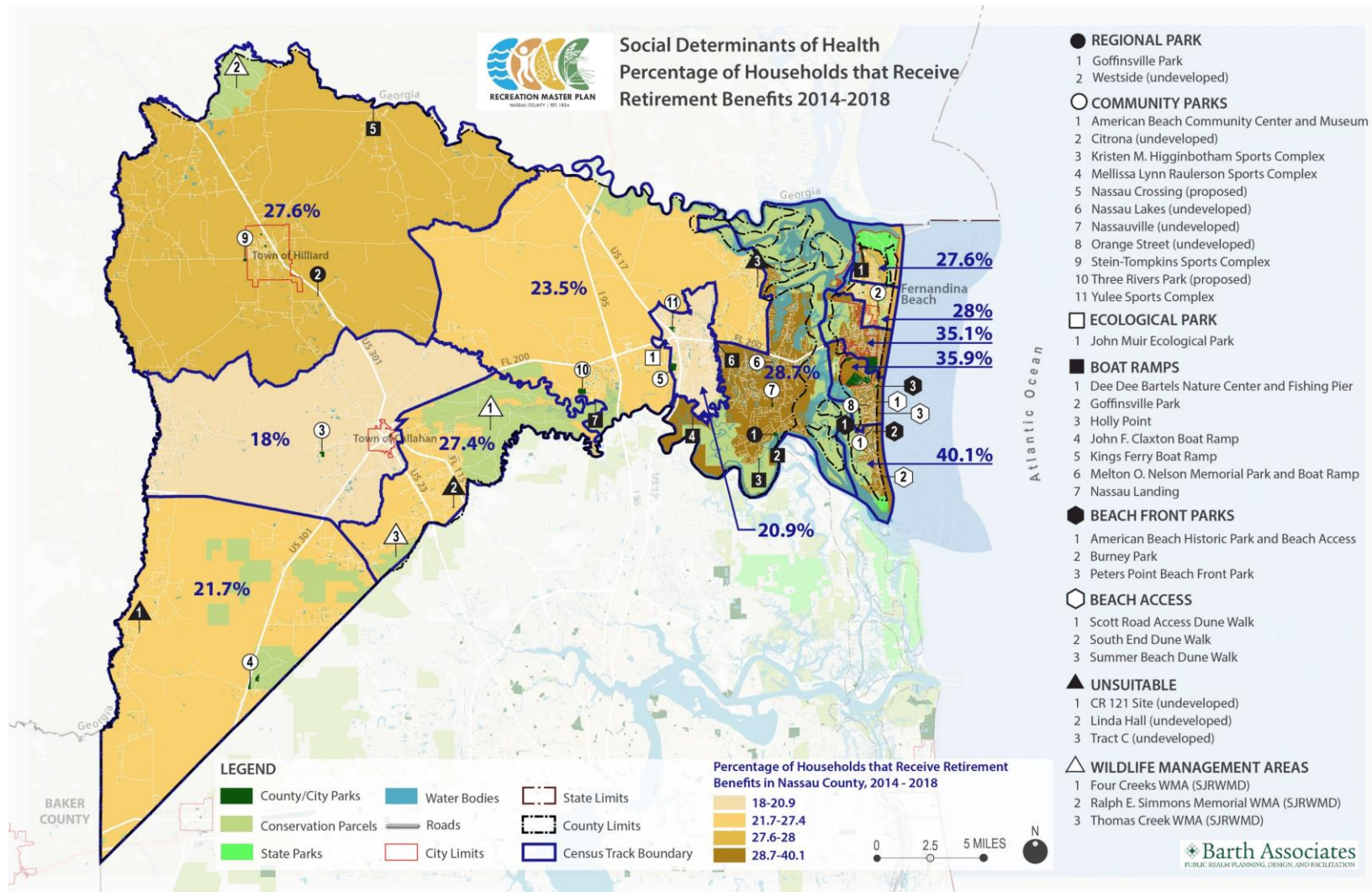
Chronic Disease – Births to Obese Mothers



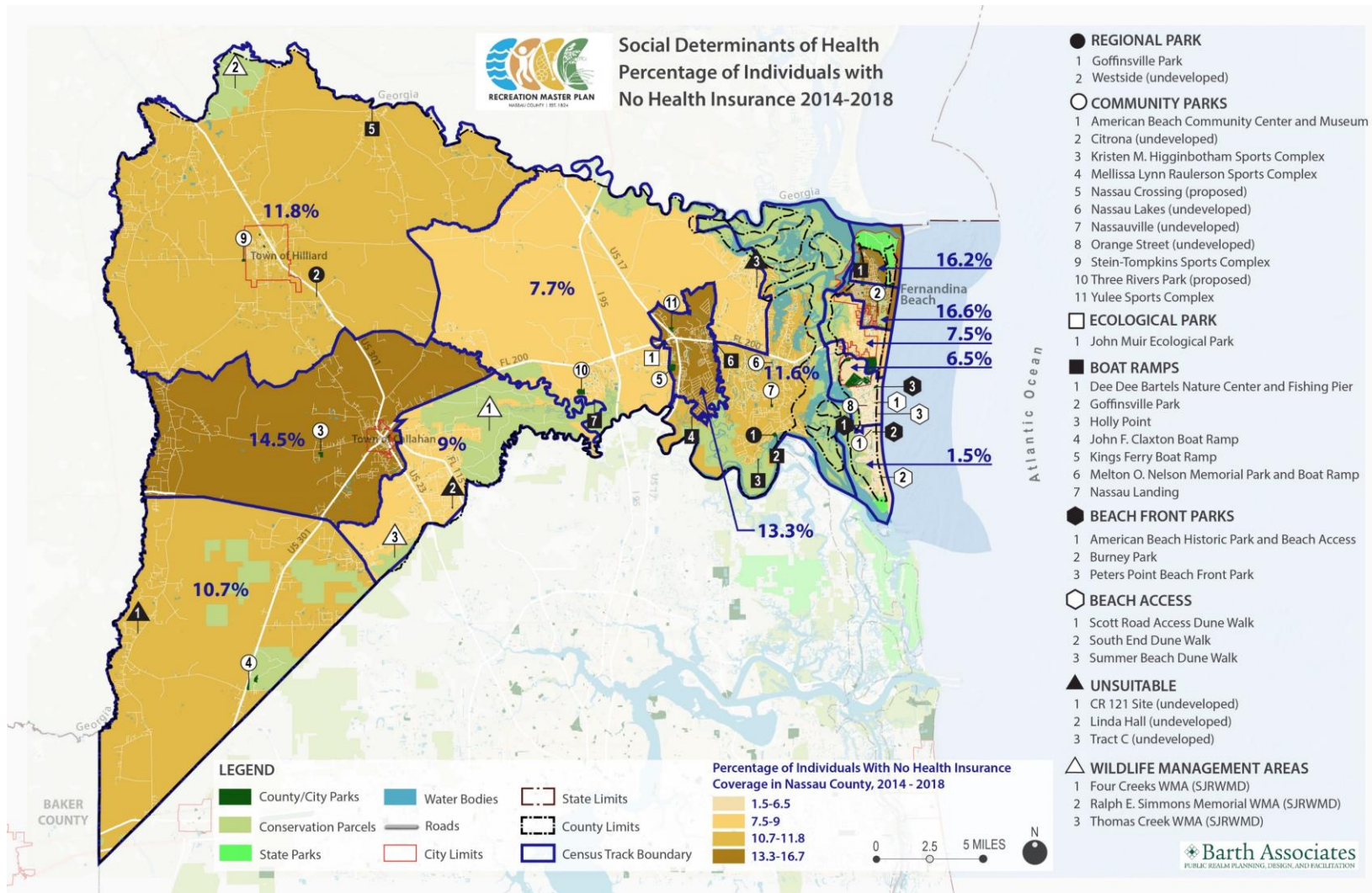
Families Below 100% Poverty Level



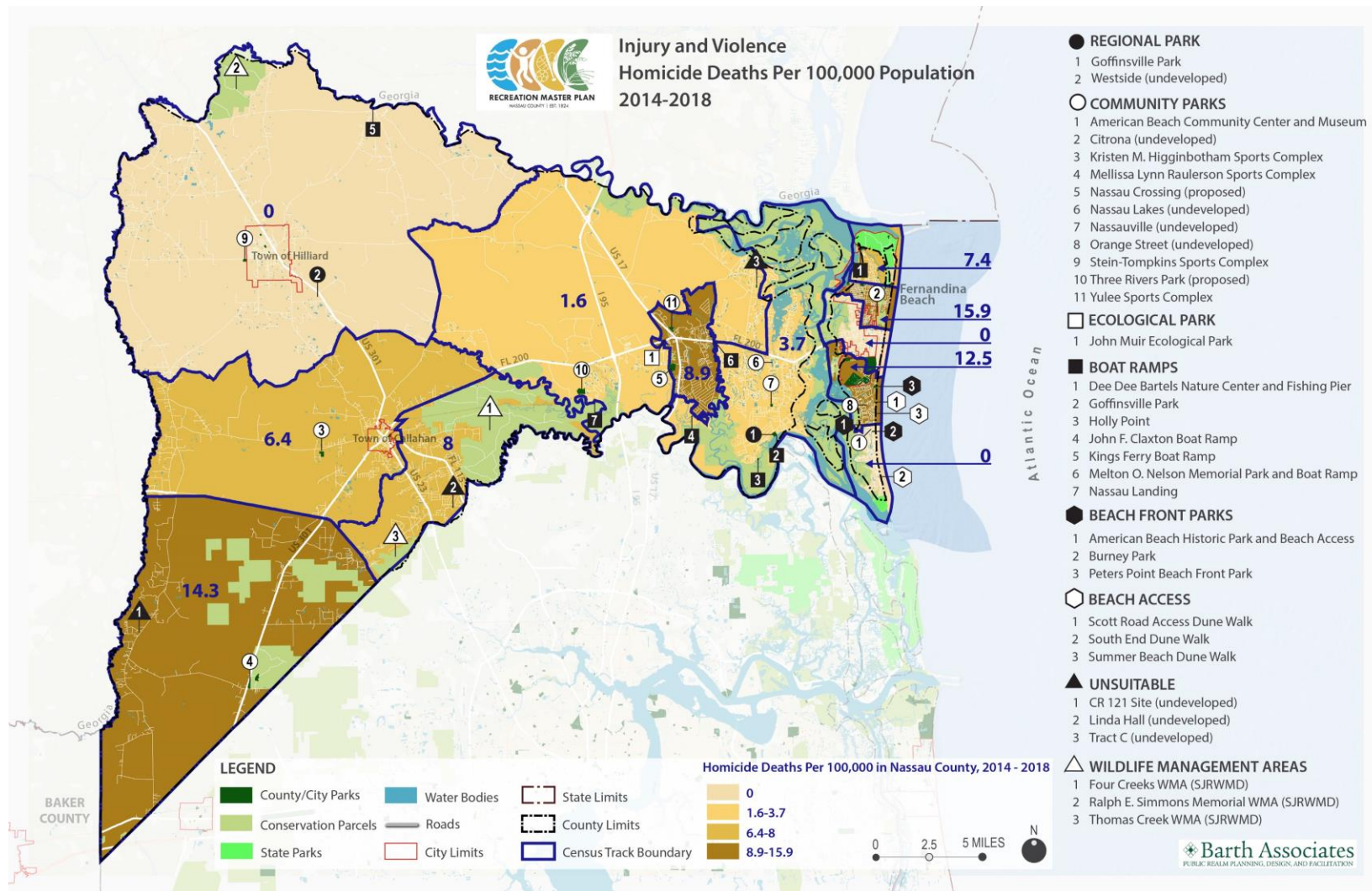
Households that Receive Retirement Benefits



Individuals with No Health Insurance



Homicide Deaths



Summary

OF HEALTH TRENDS

The analysis indicates **the County's public realm has the potential to address numerous critical community health issues**, including:

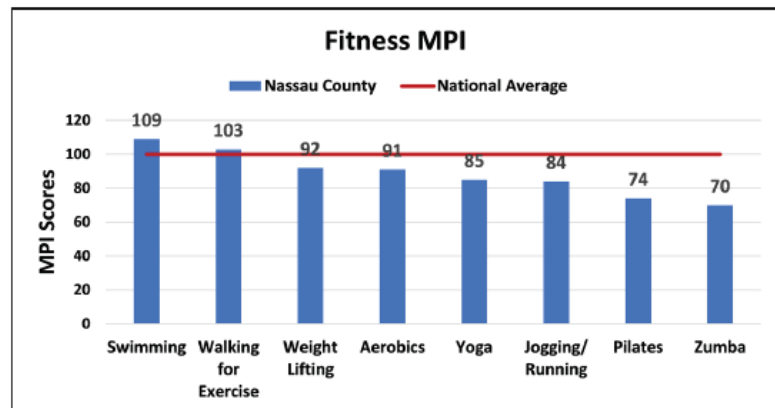
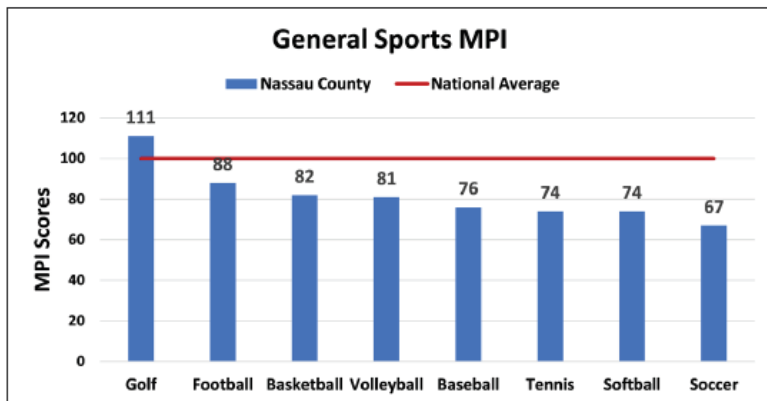
- Length of life and quality of life;
- Health behaviors such as adult obesity, physical inactivity, access to exercise opportunities; and
- Physical environment including driving alone to work and long commute driving alone.

Recreation Trends

Summary OF RECREATION TRENDS

The analysis indicates a possible need for:

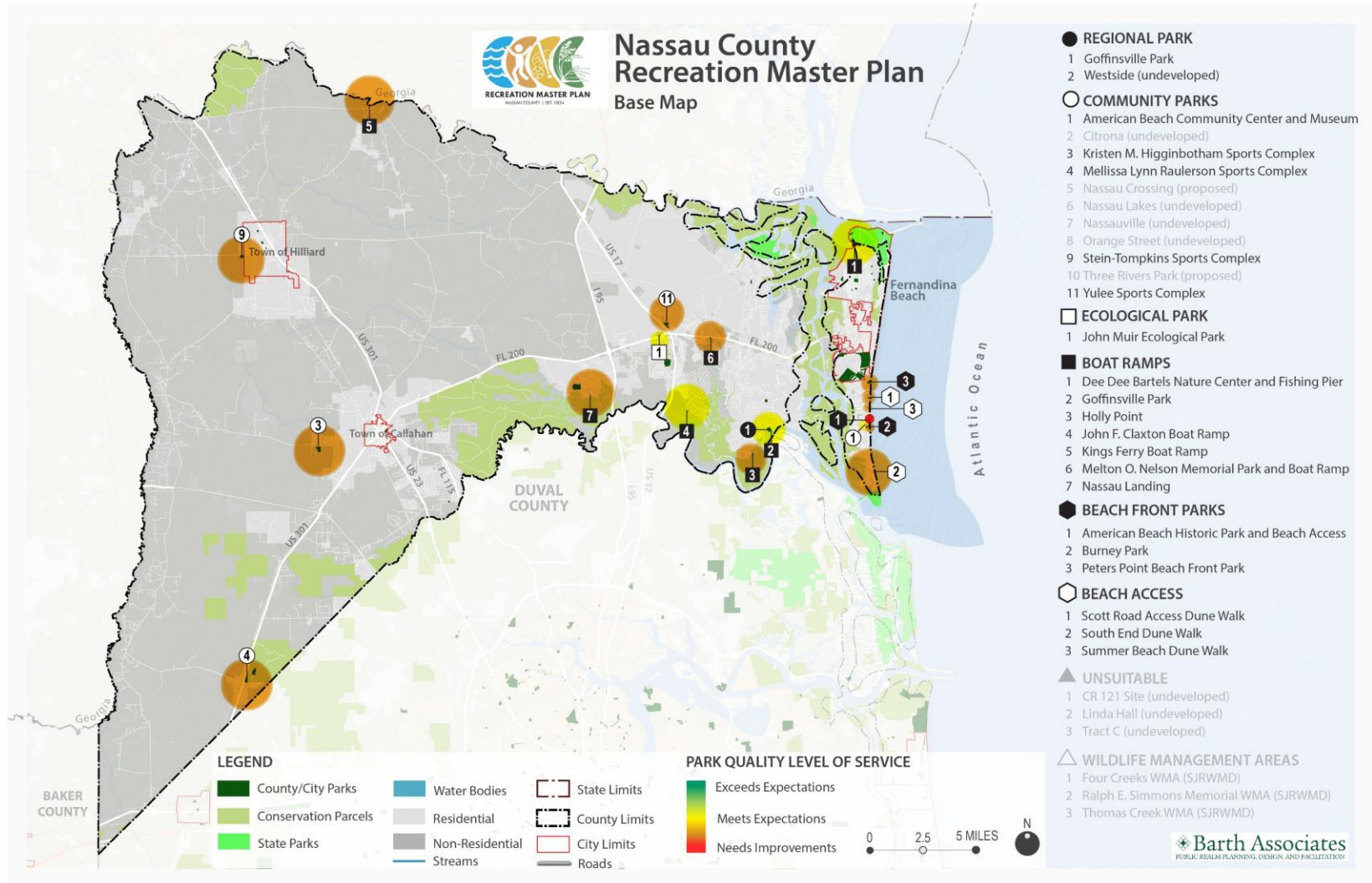
- Additional **golf courses**;
- **Swimming pools**;
- **Multi-purpose trails** (equestrian, hiking, fitness, bicycling. etc.);
- **Fishing and boating access** (both fresh and saltwater, motorized and non-motorized); and
- Additional **campsites** and **athletic fields**.



Parks System Analysis – 32 Criteria

LEGEND Needs Improvement1.0-1.9 2.0-2.9 Meets Expectations3.0-3.9 4.0-4.9 Exceeding Expectations5.0	American Beach Community Center and Museum	American Beach Historical Park and Beach Access	Burney Park	Dee Dee Bartels	Goffinsville Park	Holly Point	John F. Claxton Boat Ramp	John Muir Ecological Park	Kings Ferry Boat Ramp	Kristen M. Higginbotham Sports Complex	Melissa Lynn Raulerson Sports Complex	Melton O. Nelson Memorial Park and Boat Ramp	Nassau Landing	Peters Point Beach Front Park	Scott Road Access Dune Walk	South End Dune Walk	Stein-Tompkins Sports Complex	Summer Beach Dune Walk	Yulee Sports Complex	Average	
	3.3	1.9	2.5	3.0	3.3	2.8	3.5	3.0	2.5	2.8	2.8	2.7	2.1	2.9	2.0	2.0	2.2	2.0	2.7	2.6	
	TOTAL SYSTEM AVERAGES (Without Architecture)	3.1	1.9	2.4	2.9	3.2	2.8	3.3	2.8	2.5	2.8	2.7	2.7	2.1	2.9	2.0	2.0	2.1	2.0	2.6	2.6
PROXIMITY/ACCESS/LINKAGES	2.7	2.3	2.2	2.5	1.8	2.3	2.8	3.2	2.3	2.0	2.5	2.8	2.3	2.7	2.4	1.7	1.8	1.7	2.3	2.3	
Visibility from a distance	3	2	2	2	1	3	4	3	3	2	3	3	3	2	1	2	2	2	3	2.4	
Ease in walking to the park	3	3	2	1	1	2	2	4	1	1	3	-	2	4	4	3	1	3	2	2.3	
Transit Access	2	2	1	1	1	1	1	2	1	1	1	-	1	2	2	1	1	1	1	1.3	
Clarity of information/signage	2	2	2	3	2	2	2	3	3	2	2	2	2	2	2	2	2	2	2	2.2	
ADA Compliance	3	2	3	4	3	3	4	4	3	3	3	3	3	3	3	1	2	1	3	2.8	
Lighting	3	3	3	4	3	3	4	3	3	3	3	3	3	3	-	1	3	1	3	2.9	

Quality Level-of-Service

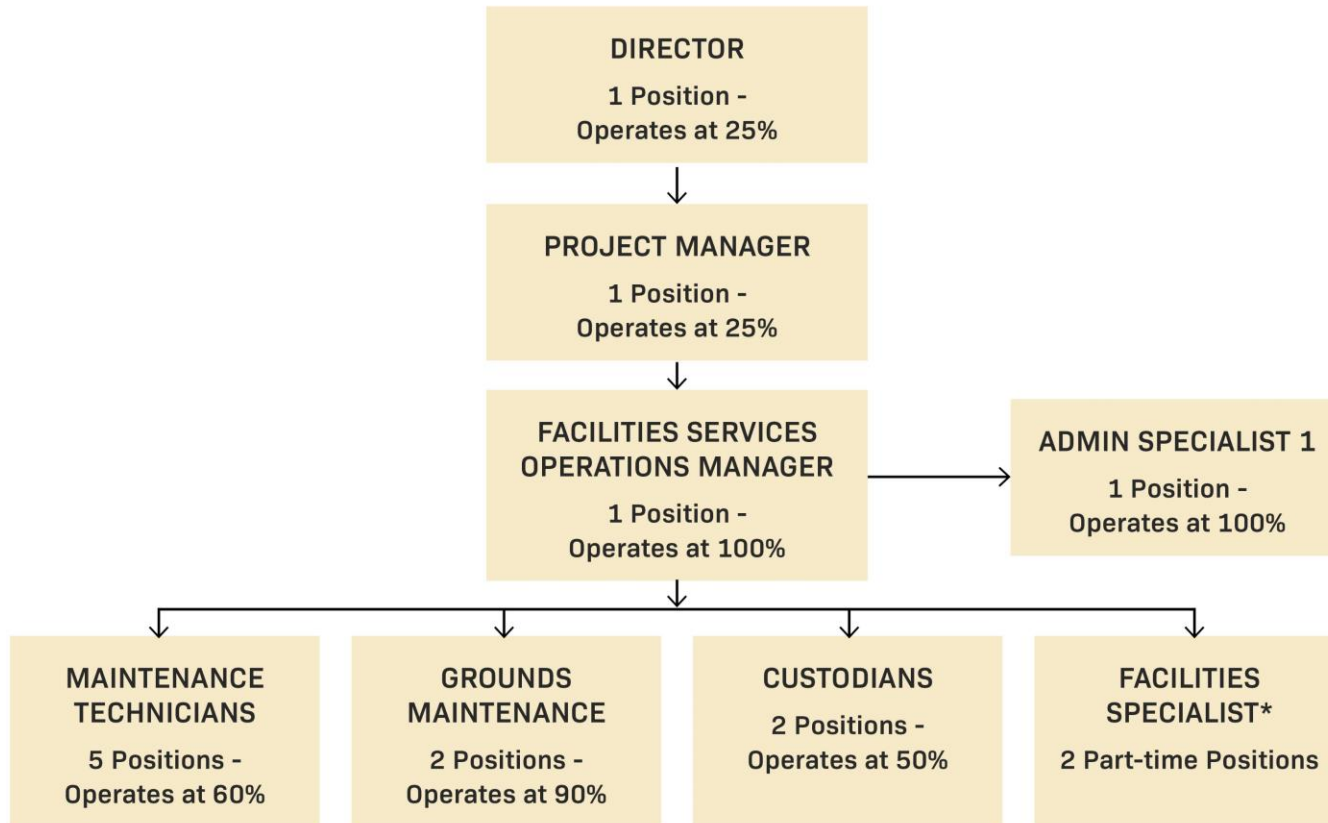


Summary

OF SITE EVALUATIONS

- Exemplary parks include Goffinsville Park and American Beach Community Center and Museum
- Improvements needed to most County parks include:
 - **Updating, repair, and replacement** of aging and damaged landscaping, hardscaping, amenities, and facilities
 - **Shaded sidewalks and transit connections** to the surrounding community
 - **Signage and wayfinding system**
 - **Accessible ADA routes**
 - **Additional/upgraded seating options**
 - **Shade and shelters**
 - **Consistent palette of standards** that harmonize colors, materials, amenities, furnishings, and fixtures throughout the park system
 - **Increased mix** of amenities, facilities and programmed and unprogrammed things to do in parks
 - **Sustainable lighting and energy efficient systems**
 - **Improved marketing/promotional efforts**

Operations, Programs, and Maintenance



**Not filled yet; duties
covered by Custodians.*

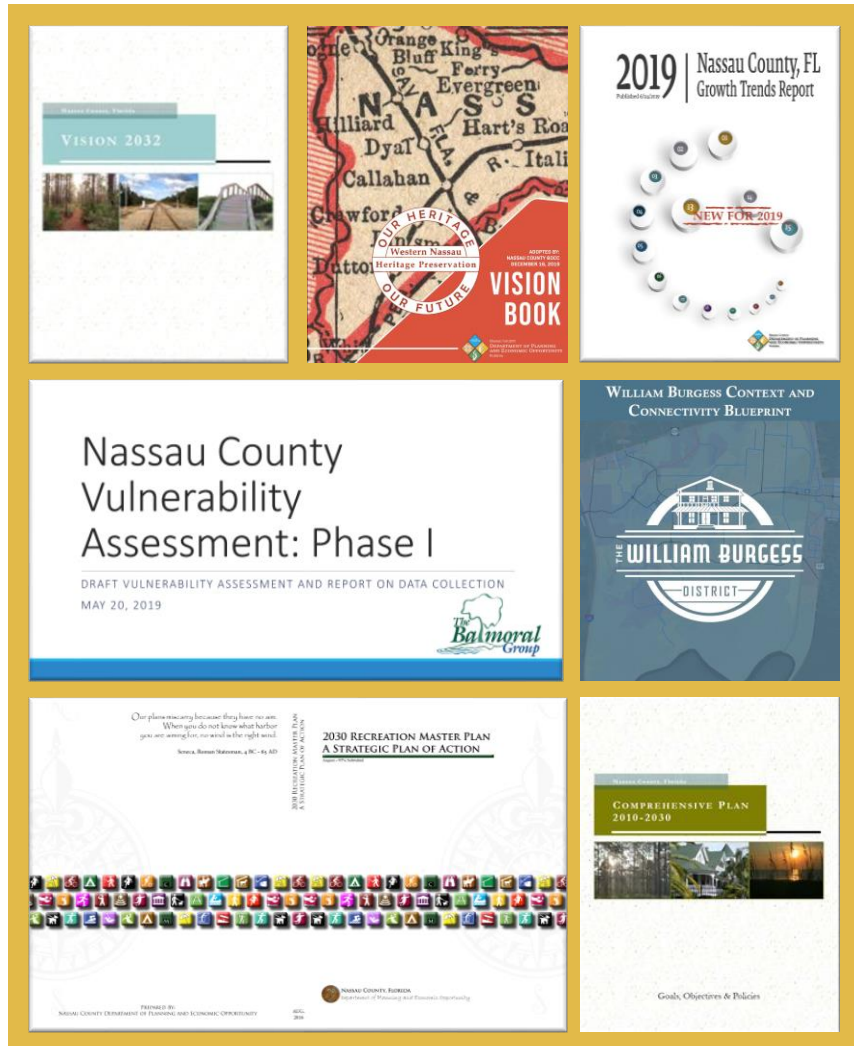
Summary

OF OPERATIONS, PROGRAMS, AND MAINTENANCE

The analysis indicates a possible need for:

- **County-wide maintenance standards** to set a bar for quality and establish routine maintenance schedules.
- **Training for park maintenance staff and associations** regarding the proper maintenance of sports fields and other amenities.
- **Standards for parks signage**
- **Directional signage** to help locate existing parks.
- **A work order system** to track true maintenance and repair costs as well as other capital expenses for parks related projects.
- **A master plan for all parks** to coordinate usage, traffic flow, safety, planned programming, as well as unplanned park use that supports a wide level of age groups and experiences.
- **An asset management plan** to determine asset replacement schedules for existing park amenities such as restrooms, picnic shelters, playgrounds, parking lots, and sports fields.
- **More robust metrics to track customer satisfaction**

Related Documents



- Nassau County Vision 2032 Plan (2007)
- Nassau County 2030 Comprehensive Plan
- 2030 Recreation Master Plan: A Strategic Plan of Action (August 2016) (not adopted)
- 2030 Recreation Master Plan: A Strategic Plan of Action Appendix (August 2016) (not adopted)
- 2019 Nassau County, FL Growth Trends Report
- 2018 Nassau County, FL Growth Trends Report
- Nassau County Vulnerability Assessment: Phase I (May 2019)
- Western Nassau Heritage Preservation Vision Book (December 2019)
- William Burgess Context and Connectivity Blueprint (July 2019)
- Nassau County Mobility Fee Ordinance (August 2014) (Mobility Plan)
- Nassau County Mobility Ordinance Update (April 2015)
- ENCPA Mobility Plan/Ordinance (June 2015)
- FY 19-20 Budget
- Five Year Capital Improvement Plan (FY19/20-FY23/24)
- Nassau Community Health Improvement Plan 2019-2021
- Resident Survey on Recreation in Nassau County (2013)
- Nassau County RFQ for SR 200/A1A Corridor Design Plan, Bid No. NC18-012
- Timber to Tides Trail Corridor Master Plan (November 2019)
- Nassau County (Evergreen) Pace EH (Protocol for Assessing Community Excellence in Environmental Health) (July 2018)
- Educational Plant Five Year Survey Report (June 2019)
- Conservation Finance Feasibility Study: Nassau County, Florida (April 2019)
- A Pace EH Project in the Evergreen Community of Nassau County, FL (Webinar PowerPoint presentation) (August 2018)
- Nassau County Stormwater Master Plan (April 2012)

Summary

OF EXISTING DOCUMENTS

- A tremendous number of County initiatives – including urban design, transportation, stormwater, and environmental – have implications for the Parks, Recreation, and Open Space Master Plan.
- Parks can stabilize and improve neighborhoods, provide bicycle and pedestrian connectivity, store and treat stormwater runoff, provide wildlife habitat, and catalyze new economic development.
- The Long-Range Vision will address how many of these initiatives can be incorporated into the County's parks and recreation system.

Public Workshops

52 attendees

January 29, 2020 at Yulee Middle School (32 participants)

January 30, 2020 at Callahan (20 participants)



Spending Priorities



Advisory Group Workshop

12 attendees

January 29, 2020 at FSJC Yulee Room



Spending Priorities

- 1** Natural/Conservation Lands
24 coins
- 2** Improvements to Existing Parks
18 coins
- 3** Beach/Water Access (including Kayak or Canoe Launch)
16 coins
- 4** Multi-use Trails, Sidewalks, and Bikeways
13 coins
- 5** Large, Multi-purpose Regional Parks
11 coins

Interviews and Focus Groups

39 attendees

3 days: January 29-31, 2020

Questions were regarding:

- Review of scope and schedule
- Parks and recreation needs (programs, facilities)
- Parks and recreation priority needs (top 3)
- Broader city/county needs (social, economic, environmental)
- Benchmark communities
- Funding/implementation
- Other/anything else

1

Multi-use Trails

Listed 5 times as a priority

2

- Bandshell/Pavilion/Amphitheater
- Recreation Center

Each listed 4 times as a priority

3

- Event/Meeting Space
- Larger/Regional Parks
- Sports Fields
- County-wide Organization/Planning/Partnerships

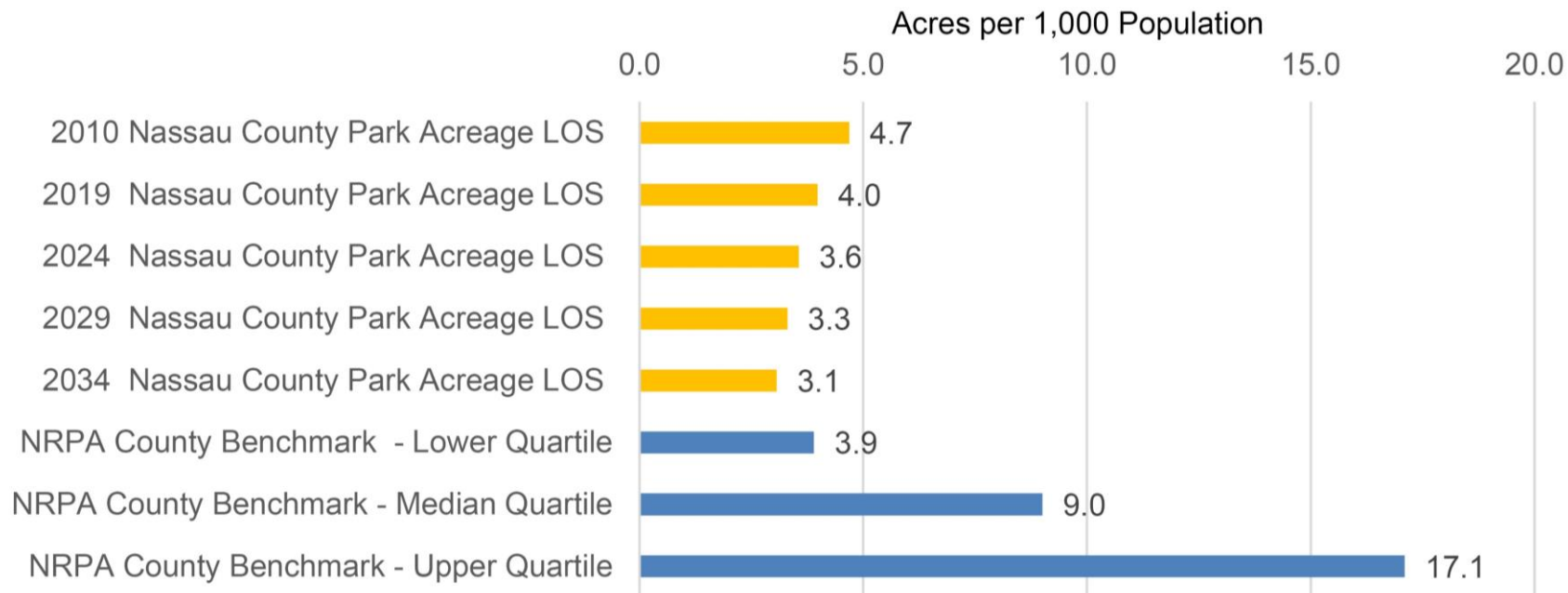
Each listed 3 times as a priority

4

- Non-motorized Boat/Kayak Launches
- Boat Access - General/Motorized
- Protection of Ecosystems/Wildlife Corridors
- More Aquatics

Each listed 2 times as a priority

Level-of-Service Analysis - Acreage

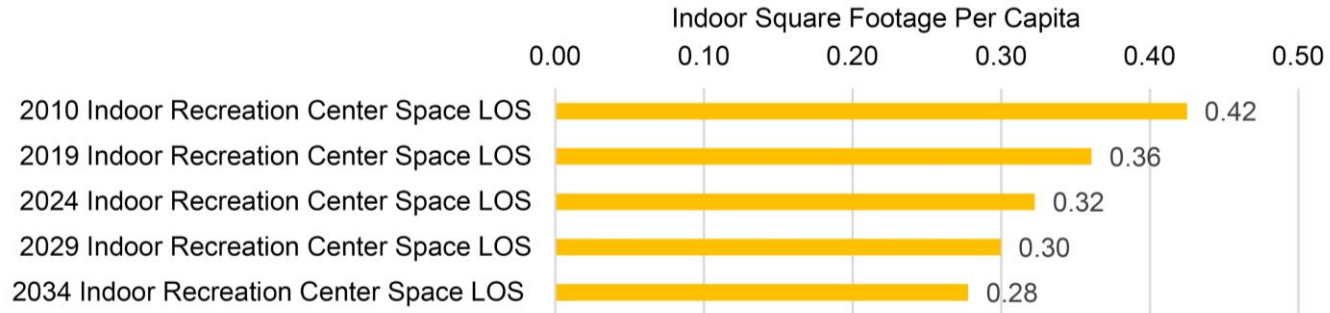


Facilities LOS Analyses & Benchmarking

Facility	Nassau County Facilities LOS (Population per Facility)					NRPA Median County Benchmark
	2010 LOS	2019 LOS	2024 LOS	2029 LOS	2034 LOS	
Amphitheatre/Stage	-	-	-	-	-	289,907
Boat Ramp	7,331	8,634	9,658	10,395	11,213	-
Baseball Fields (Youth)	12,219	14,390	16,096	17,325	18,689	19,099
Baseball Fields (Adult)	24,438	28,780	32,192	34,650	37,377	44,177
Basketball Court	73,314	86,340	96,575	103,951	112,131	22,855
Dog Park	-	-	-	-	-	134,327
Football Field	12,219	14,390	16,096	17,325	18,689	42,641
Multi-purpose Playing Field	36,657	43,170	48,288	51,976	56,066	27,579
Pickleball Court	-	-	-	-	-	12,254*
Playground	24,438	28,780	32,192	34,650	37,377	12,674
Skate Park	-	-	-	-	-	230,000
Soccer Field (Youth)	18,329	21,585	24,144	25,988	28,033	26,876
Softball Field (Adult)	18,329	21,585	24,144	25,988	28,033	40,438
Softball Field (Youth)	8,146	9,593	10,731	11,550	12,459	18,646
Softball Field (Total)	5,640	6,642	7,429	7,996	8,625	40,438
Swimming Pool (Outdoor)	-	-	-	-	-	126,093
Tennis Court	36,657	43,170	48,288	51,976	56,066	12,254
Walking Trail (LF or Miles)	-	-	-	-	-	-

* Note: Facility LOS based on BA experience.

Indoor Recreation Square Footage LOS Analysis



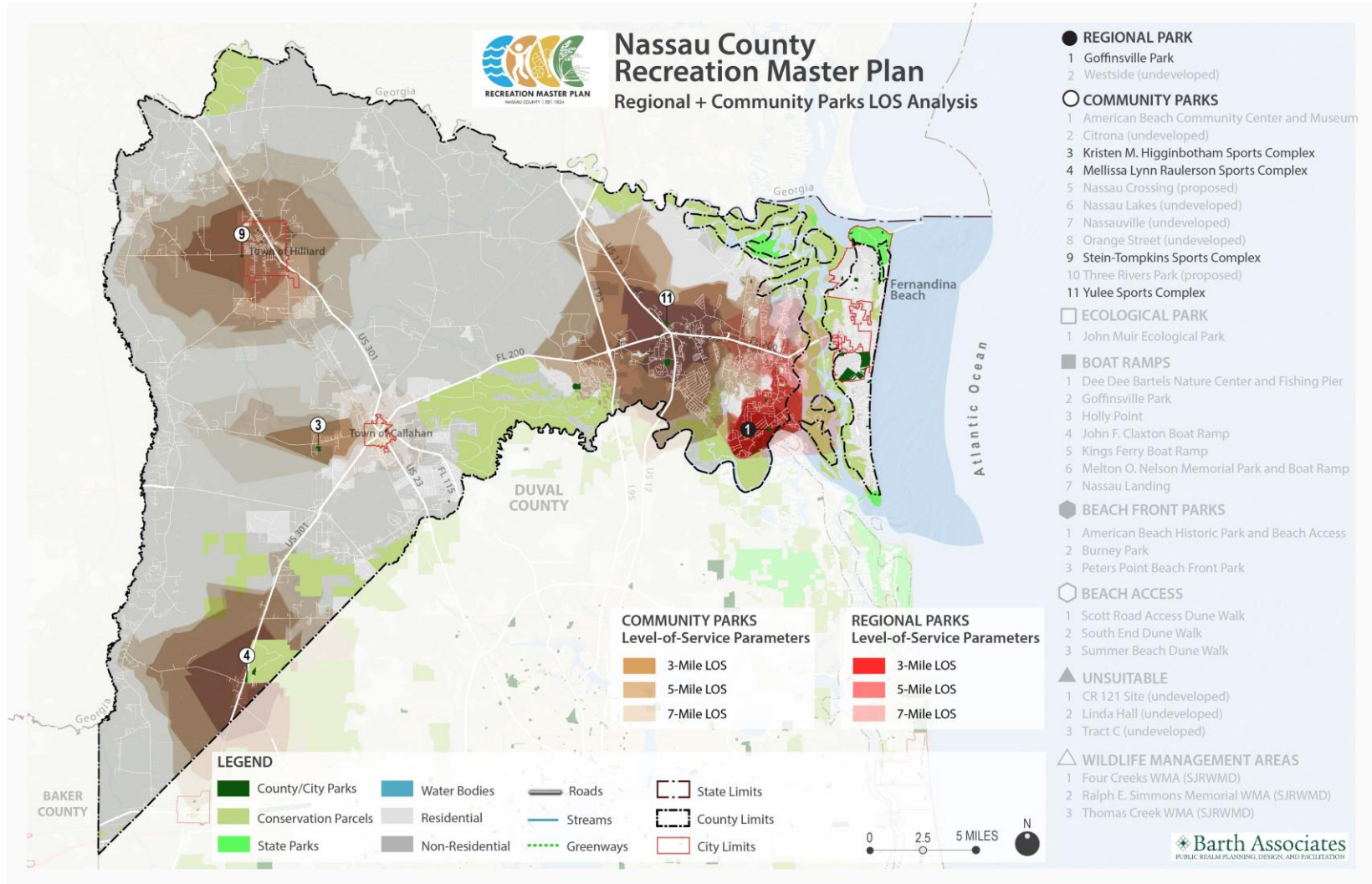
Access LOS Summary

Park Type Analyzed	3 Mile	5 Mile	7 Mile
Regional + Community Parks	O	O	O
Beach Access Parks + Beach Front Parks	O	O	-
Boat Ramps	-	O	-

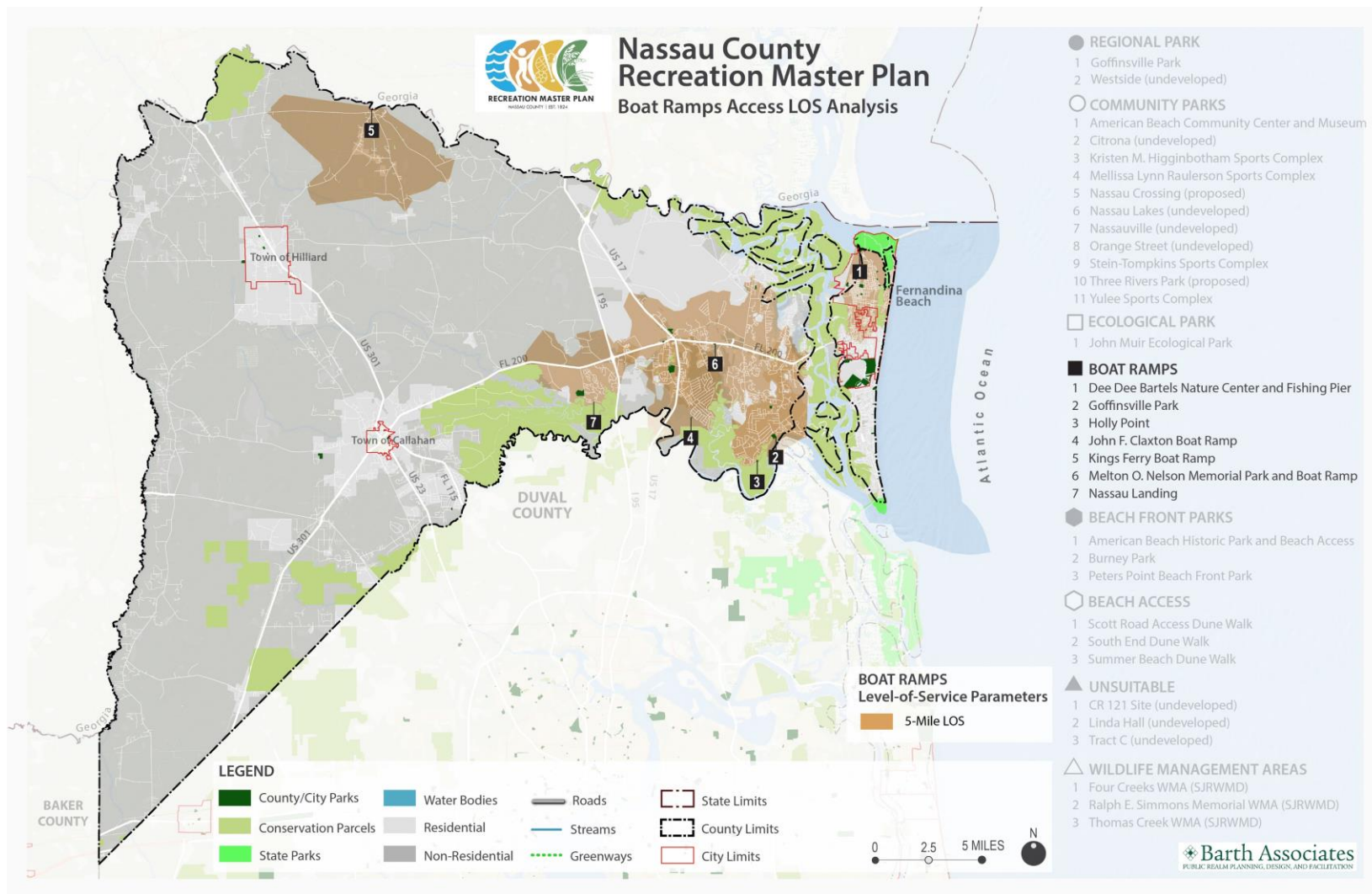
O Partial Access

+ Full Access

Regional + Community Parks LOS Analysis



Boat Ramps LOS Analysis



Summary

OF LEVEL-OF-SERVICE ANALYSIS

Based on the various LOS analyses completed, it appears that Nassau County may be in need of:

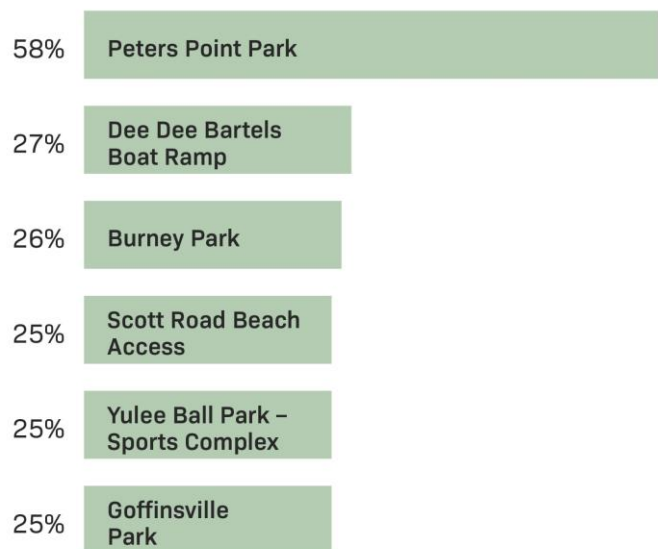
- Amphitheaters/Stages
- Baseball Fields
- Basketball Courts
- Dog Parks
- Football Fields (by the Year 2024)
- Multi-purpose Playing Fields
- Pickleball Courts
- Playgrounds
- Skate Parks
- Soccer Fields – Youth (by the Year 2034)
- Swimming Pools
- Tennis Courts
- Walking Trails

Statistically-Representative Survey

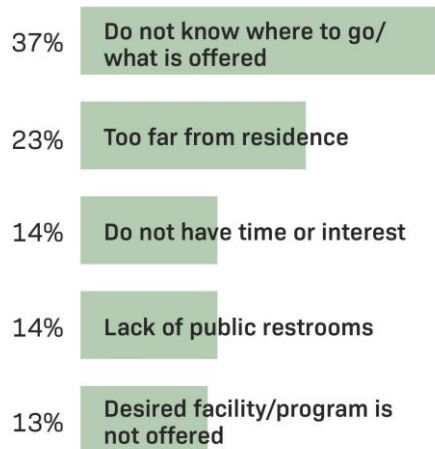
431 Respondents

a precision of at least $\pm 4.7\%$ at the 95% level of confidence

Facility Use



Barriers to Facility/Program Use and Participation



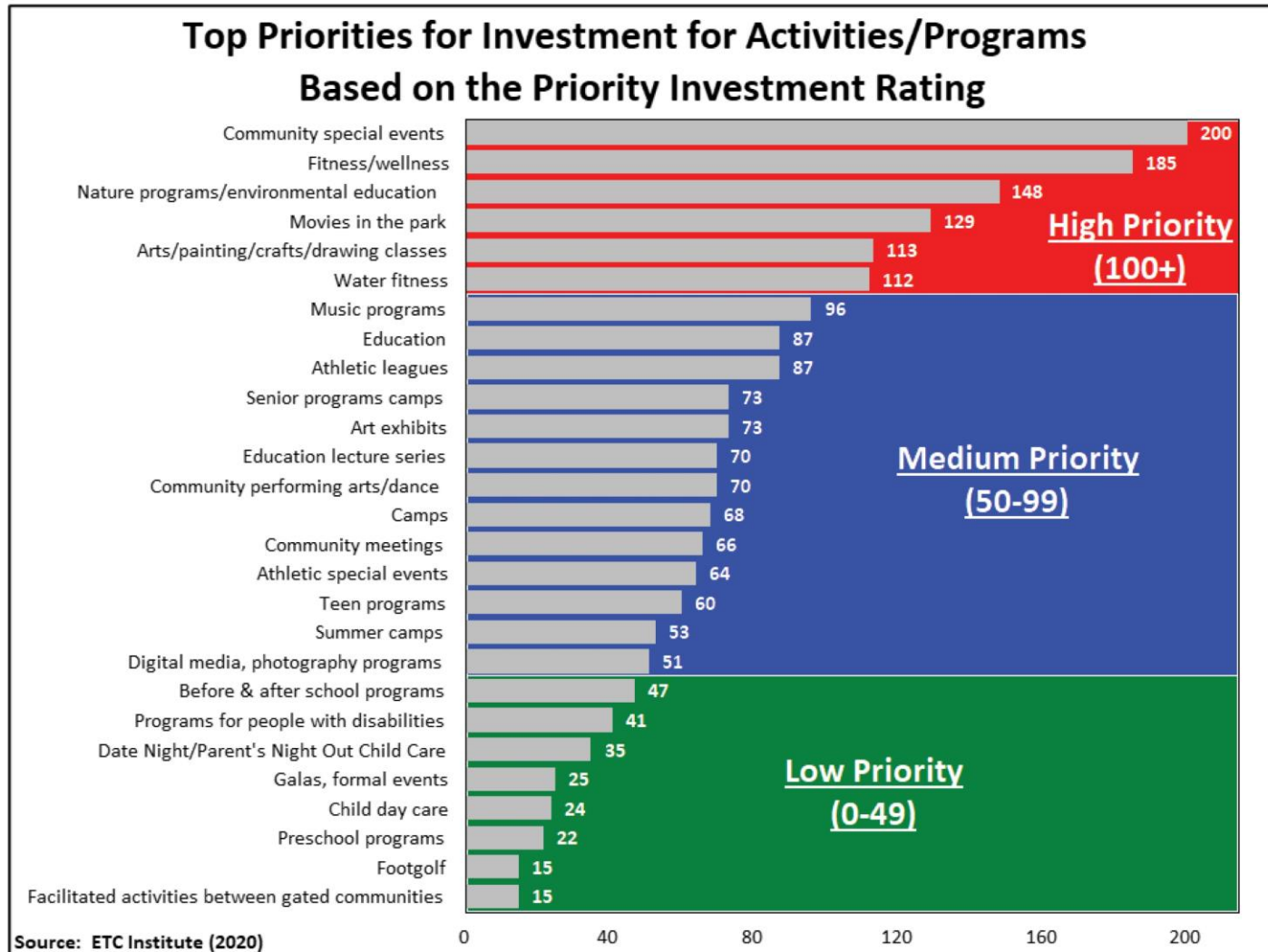
52% satisfied with parks

(21% “very”; 31% “somewhat”)

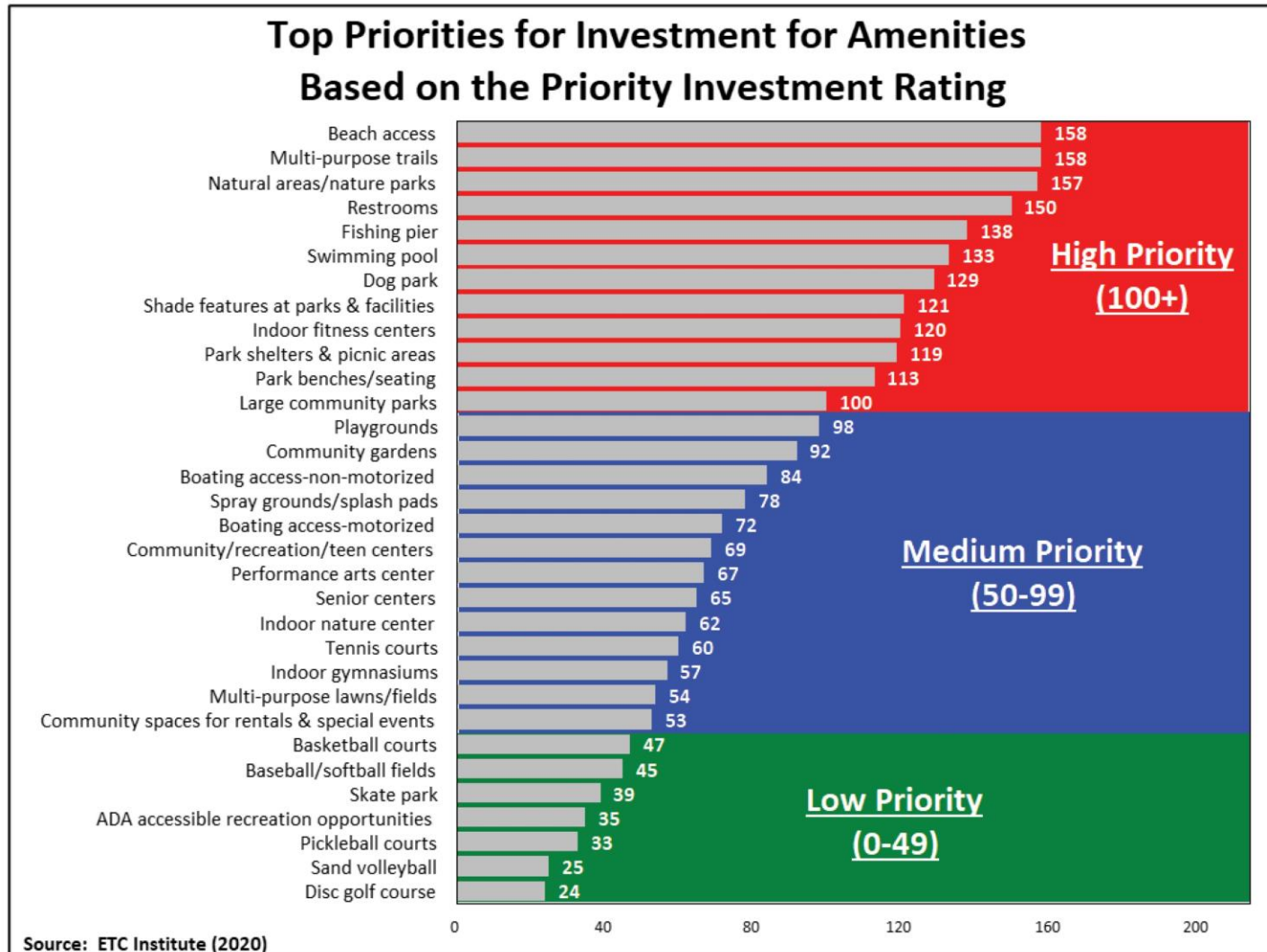
40% satisfied with number of parks

(17% “very”; 23% “somewhat”)

Top Priorities for Activities/Programs based on PIR



Top Priorities for Amenities based on PIR



Support for Funding Options

Level of Support to Increase Taxes

Respondents were asked to indicate their level of support of an increase in taxes to fund types of parks, trails, and recreation facilities.

**55% are
supportive**

(19% “very”; 36% “somewhat”)

20% are unsure

**21% are not
supportive**

4% didn’t respond

Level of Support to Increase Fees

Respondents were asked to indicate their level of support of an increase in fees to parks and amenities owned and operated by Nassau County to fund parks, trails, and recreation facilities.

**47% are
supportive**

(18% “very”; 29% “somewhat”)

17% are unsure

**33% are not
supportive**

3% didn’t respond

On-line Survey

560 Respondents

April 2020

- **Satisfaction** – 67% of respondents were satisfied with quality of parks; 61% were satisfied with the quantity/number of parks
- **Barriers** – “Do not know where to go/what is offered” and “Too far from our residence” were top two reasons preventing respondents from using parks
- **Small Park within 10 Minutes** – nearly 70% of respondents said that is “important” or “very important” to have a small neighborhood park within a 10-minute walk
- **Need More Programs** – respondents indicated they “need more of” Movies in the park (78%); Community special events (72%); and Teen programs (71%) (*top three*)
- **Need More Amenities** - respondents indicated they “need more of” Shade features at parks/facilities (78%); Spray grounds/splash pads (77%); Multi-purpose Trails (74%); and Restrooms (74%) (*top three*)
- **Funding** – 63% of respondents were “very” or “somewhat” supportive of tax increases to fund parks projects, whereas only 53% were supportive of adding user fees to help fund them
- **Supportive Actions** – respondents were most supportive of Developing passive recreation opportunities; Acquiring land to protect natural areas; and Expanding park resources to improve facility maintenance (*top three, in order of priority*)

Needs Assessment Summary

Recreation Facility Priorities

Items in RED are considered HIGH PRIORITY needs in the Statistically-Valid Survey	Mail/Telephone Survey	Public Workshops	Advisory Group	Interviews & Focus Group Meetings	Level-of-Service Analysis	On-line Survey	Site Evaluations
RECREATION FACILITY PRIORITIES							
1. Beach Access	●						
2. Multi-Purpose Trails	●	●	●	●	●	●	
3. Natural Areas/Nature Parks	●		●	●		●	
4. Restrooms	●					●	
5. Fishing Piers	●						
6. Swimming Pools	●	●		●	●	●	
7. Dog Parks	●				●		
8. Shade Features at Parks and Facilities	●					●	●
9. Indoor Community Recreation/Teen/Fitness Centers	●	●		●	●	●	
10. Parks Shelters and Picnic Areas	●					●	●
11. Park Benches/ Seating	●					●	●
12. Large Community Parks/Parkland	●		●	●	●	●	
13. Pickleball Courts		●			●		
14. Indoor Gyms (Basketball/Volleyball)		●			●		
15. Bandshell/Pavilion/ Amphitheater				●	●		
16. Event/Meeting Space				●			

Items in RED are considered HIGH PRIORITY needs in the Statistically-Valid Survey	Mail/Telephone Survey	Public Workshops	Advisory Group	Interviews & Focus Group Meetings	Level-of-Service Analysis	On-line Survey	Site Evaluations
RECREATION FACILITY PRIORITIES							
17. Sports Fields (Multi-purpose)		●		●	●	●	
18. Boat Access/Launches			●	●			
19. Playgrounds			●		●		
20. Skate Parks					●		
21. Tennis Courts					●		
22. Soccer Fields – Youth					●		
23. Baseball Fields					●		
24. Football Fields					●		
25. Spray Grounds/Splash Pads						●	
26. Community Gardens						●	
27. Updating/ Replacement/Repair of Existing Facilities		●	●				●
28. Signage and Wayfinding							●
29. Increased Mix of Amenities							●
30. Sustainable Lighting and Energy Efficient Systems							●

Needs Assessment Summary

Program Priorities

Items in RED are considered HIGH PRIORITY needs in the Statistically-Valid Survey	Mail/ Telephone Survey	Public Workshops	Advisory Group	Interviews & Focus Group Meetings	Level- of- Service Analysis	On-line Survey	Site Evaluations
RECREATION PROGRAM PRIORITIES							
1. Community Special Events	●					●	
2. Fitness/Wellness	●					●	
3. Nature Programs/ Environmental Education	●		●			●	
4. Movies in the Park	●					●	
5. Arts/Painting/Crafts/ Drawing Classes	●						
6. Water Fitness	●					●	
7. Before & After School Programs		●	●				
8. Learn to Swim		●					
9. Pickleball		●					
10. Camps (Summer, School Break)		●	●			●	
11. Athletic Leagues		●					
12. Teen Programs			●			●	
13. Music Programs						●	
14. Programs for People with Disabilities						●	
15. Education						●	

Needs Assessment Summary

FACILITY PRIORITIES

- Multi-Purpose Trails
- Swimming Pools
- Indoor Recreation/Community Centers
- Additional Large Community Parks
- Multi-purpose Sports Fields

PROGRAM PRIORITIES

- Community Special Events
- Fitness/Wellness
- Nature Programs/Environmental Education
- Movies in the Park
- Arts/Painting/Crafts/Drawing Classes
- Water Fitness
- Camps (Summer, School Break)

Other priorities include:

- Beach Access
- Natural Areas/Nature Parks
- Restrooms
- Fishing Piers
- Dog Parks
- Shade Features at Parks and Facilities
- Park Shelters and Picnic Areas
- Park Benches/Seating
- Pickleball Courts
- Indoor Gyms (Basketball/Volleyball)
- Bandshell/Pavilion/Amphitheater
- Updates/Repairs to Existing Facilities



**PARKS, RECREATION, AND
OPEN SPACE MASTER PLAN**

NASSAU COUNTY | EST. 1824

Nassau County **PARKS, RECREATION, AND OPEN SPACE MASTER PLAN**

INTERIM REPORT
May 2020