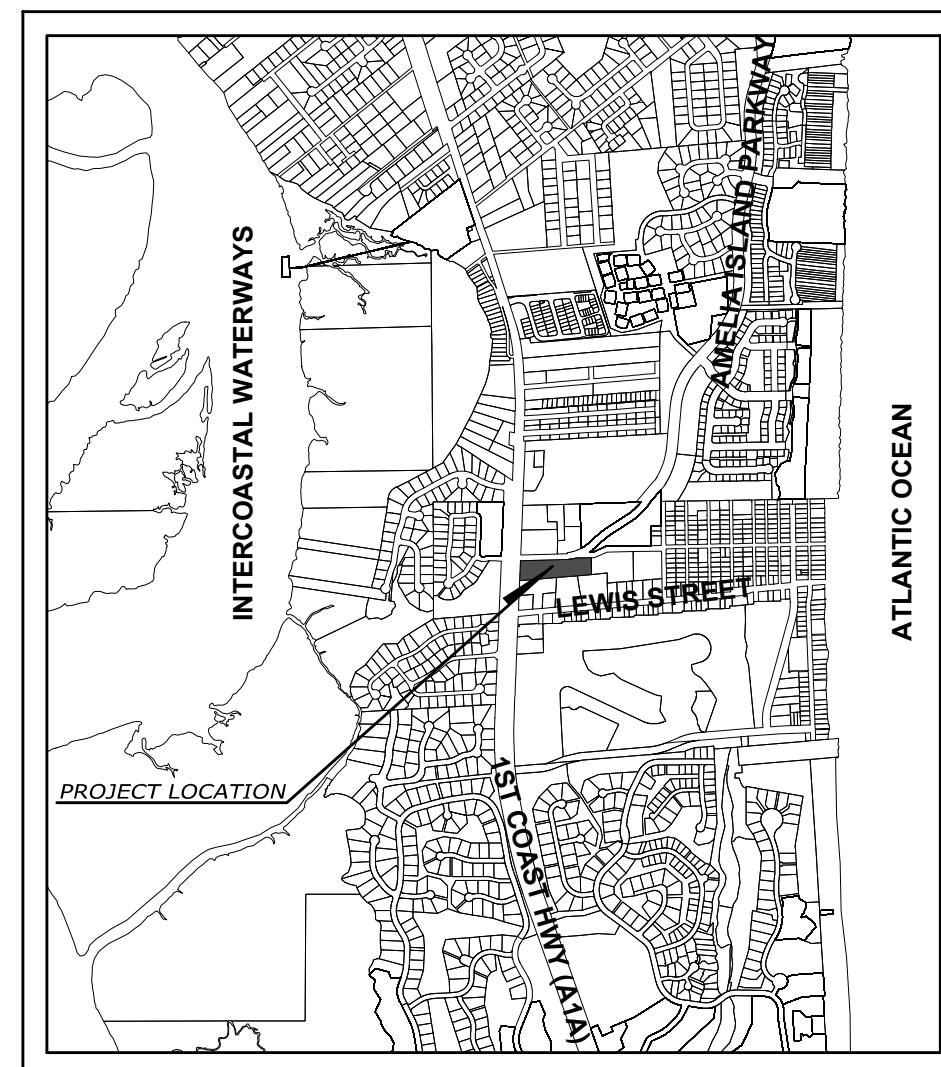


SUMMER BEACH PARCEL FINAL DEVELOPMENT PLAN



VICINITY MAP
N.T.S.

NASSAU COUNTY

PREPARED FOR
FORUM CAPITAL PARTNERS
 18138 WHIPPOORWILL LANE
 JACKSONVILLE, FL 32256
 PHONE: 904.264.7360

INDEX OF SHEETS	
SHEET	TITLE
	COVER
	SIGNATURE SHEET
C100	FINAL DEVELOPMENT PLAN
C101	FINAL DEVELOPMENT GRADING PLAN
C102	FINAL DEVELOPMENT UTILITY PLAN
TM100	TREE REMOVAL & PROTECTION PLAN
TM102 - TM105	TREE EVALUATION AND MITIGATION TABLE
LA100	LANDSCAPE PLAN
LA101	LANDSCAPE SPECIFICATION
S100	SURVEY
A100	ELEVATION

OWNER
 J.H. COBB PROPERTIES, INC
 10138 WHIPPOORWILL LANE
 JACKSONVILLE, FL 32256
 (904) 261-7360

DEVELOPER
 FORUM CAPITAL PARTNERS
 9995 GATE PARKWAY, SUITE 400
 JACKSONVILLE, FL 32256
 (904) 928-3912
 CONTACT: MORGAN BROWN

DESIGN PROFESSIONAL
 CONNELLY & WICKER INC
 10060 SKINNER LAKE DR., SUITE 500
 JACKSONVILLE, FL 32246
 (904) 265-3030

CONTACT: RICHARD WELCH, PE

SURVEYOR
 A & J LAND SURVEYORS, INC.
 5847 LUELLA STREET
 JACKSONVILLE BEACH, FL 32207
 (904) 346-1733

CW Connelly & Wicker Inc.
 Planning • Engineering • Landscape Architecture

10060 Skinner Lake Drive, Suite 500 Jacksonville, Florida 32246
 (904) 256-3030 FAX: (904) 265-3031 www.cwieng.com
 Florida Registry 3650 L.A. Number: LC26000311

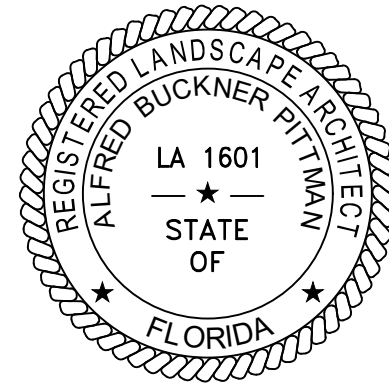
NOTE:
 IF YOU DIG IN FLORIDA, YOU ARE REQUIRED
 TO CALL SUNSHINE STATE ONE-CALL OF
 FLORIDA, INC. 1-800-432-4770 FOR
 LOCATES. IT'S THE LAW.

	10060 Skinner Lake Drive, Suite 500 Jacksonville, Florida 32246 (904) 256-3030 FAX: (904) 265-3031 www.cwieng.com Florida Registry 3650 L.A. Number: LC26000311
	THIS DRAWING IS THE PROPERTY OF CONNELLY & WICKER INC. AND IS NOT TO BE REPRODUCED OR COPIED IN WHOLE OR IN PART. IT IS NOT TO BE USED ON ANY OTHER PROJECT AND IS TO BE RETURNED ON REQUEST.
Project No.: 20-01-0014	Drawn: ANB
Designed: MEL	O.C.: RCW
Checked: RCW	Date: MAY 26, 2020
Date: MAY 26, 2020	Scale:
Sheet	No. Date Revision

FINAL DEVELOPMENT
 COVER

SUMMER BEACH
 PARCEL
 NASSAU COUNTY
 PREPARED FOR
 FORUM CAPITAL PARTNERS

MARY E. LEAP PROTT, P.E.
 P.E. NUMBER: 61449
 Reg. Engineer



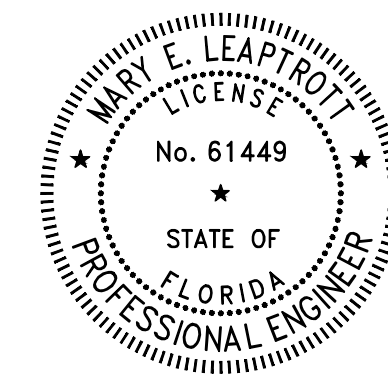
THIS DOCUMENT HAS BEEN DIGITALLY SIGN AND SEALED BY:

PRINTED COPIES OF THIS DOCUMENT ARE NOT CONSIDERED SIGNED AND SEALED. THE SIGNATURE MUST BE VERIFIED ON THE ELECTRONIC DOCUMENTS.

CONNELLY & WICKER INC.
 10060 SKINNER LAKE DR., SUITE 500
 JACKSONVILLE, FL 32246
 PHONE 904.265.3030 FAX 904.265.3031
 CA NO. 3650 LA NO. LC26000311
 ALFRED B. PITTMAN, RLA NO. 0001601

THE ABOVE NAMED PROFESSIONAL ENGINEER SHALL BE RESPONSIBLE FOR THE FOLLOWING SHEETS IN ACCORDANCE WITH RULE 61G15-23.004, F.A.C.

INDEX OF SHEETS	
SHEET	TITLE
TM100	TREE REMOVAL & PROTECTION PLAN
TM102 - TM105	TREE EVALUATION AND MITIGATION TABLE
LA100	LANDSCAPE PLAN
LA101	LANDSCAPE SPECIFICATION



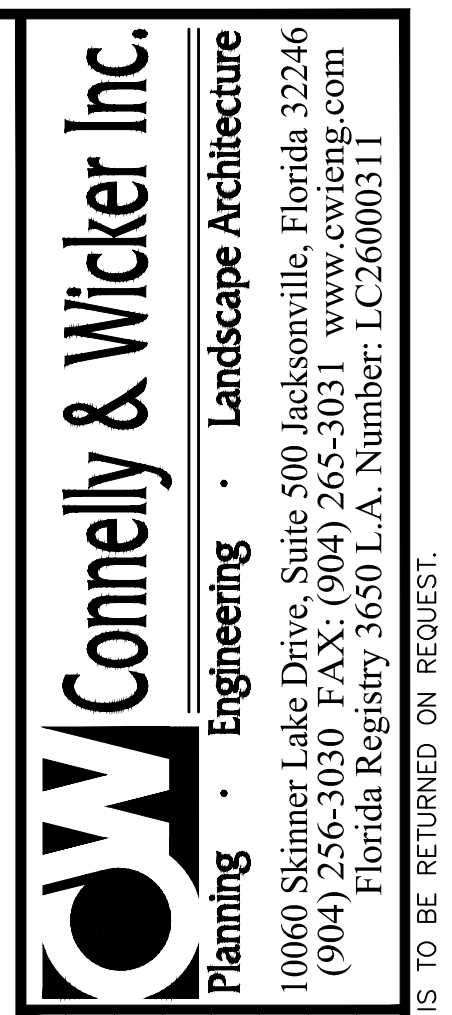
THIS DOCUMENT HAS BEEN DIGITALLY SIGN AND SEALED BY:

PRINTED COPIES OF THIS DOCUMENT ARE NOT CONSIDERED SIGNED AND SEALED. THE SIGNATURE MUST BE VERIFIED ON THE ELECTRONIC DOCUMENTS.

CONNELLY & WICKER INC.
 10060 SKINNER LAKE DR., SUITE 500
 JACKSONVILLE, FL 32246
 PHONE 904.265.3030 FAX 904.265.3031
 CA NO. 3650 LA NO. LC26000311
 MARY E. LEAPTROT, P.E. NO. 61449

THE ABOVE NAMED PROFESSIONAL ENGINEER SHALL BE RESPONSIBLE FOR THE FOLLOWING SHEETS IN ACCORDANCE WITH RULE 61G15-23.004, F.A.C.

INDEX OF SHEETS	
SHEET	TITLE
C100	FINAL DEVELOPMENT PLAN
C101	FINAL DEVELOPMENT GRADING PLAN
C102	FINAL DEVELOPMENT UTILITY PLAN



No.	Date	Revision

FINAL DEVELOPMENT
SIGNAGE PAGE

SUMMER BEACH
PARCEL
NASSAU COUNTY
PREPARED FOR
FORUM CAPITAL PARTNERS

MARY E. LEAPTROT, P.E.
P.E. NUMBER: 61449
Reg. Engineer

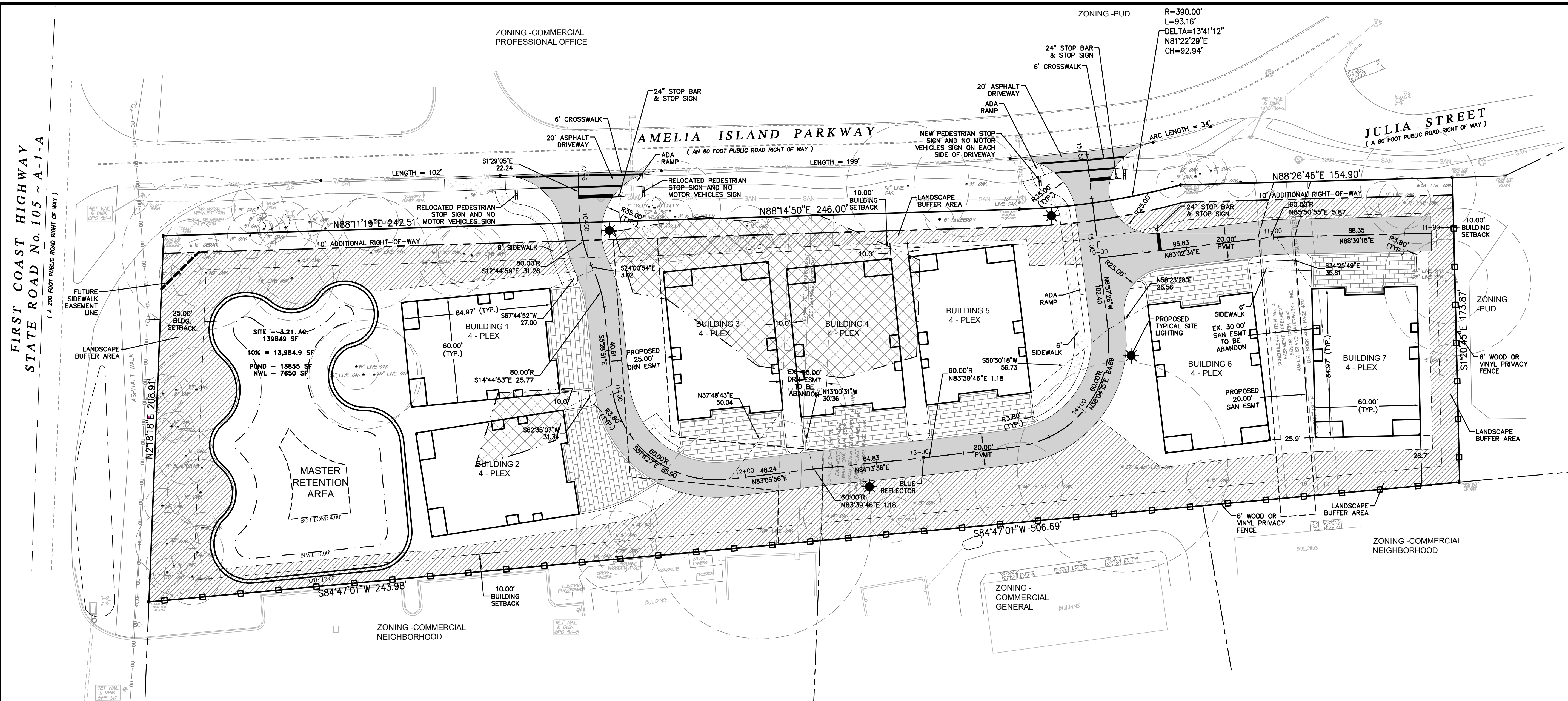
Project No.: 20-01-0014
 Designed: MEL
 Drawn: ANB
 Checked: RCW
 O.C.: RCW
 Date: MAY 26, 2020
 Scale:

THIS DRAWING IS THE PROPERTY OF CONNELLY & WICKER INC. AND IS NOT TO BE REPRODUCED OR COPIED IN WHOLE OR IN PART. IT IS NOT TO BE USED ON ANY OTHER PROJECT AND IS TO BE RETURNED ON REQUEST.

Printed: Jun 11, 2020 - 2:27pm

Printed: Jun 11, 2020 - 2:27pm

J:\2020-01-0014 Summer Beach Parcel Design\Drawings\20-01-0014 - FDP - Site Plan.dwg



LEGEND

	0.30 AC. OF WETLAND TO BE IMPACTED
	LANDSCAPE BUFFER AREA

PROJECT DATA	
	PROPOSED
GROSS PROJECT AREA	3.21 ac.
BUILDING AREA	.82 ac.
PAVEMENT AREA	.59 ac.
RETENTION AREA	.32 ac.
OPEN SPACE	1.80 ac.
TOTAL DISTURBED AREA	2.96 ac.
TOTAL PRESERVED AREA	.25 ac.
TOTAL IMPERVIOUS AREA	1.41 ac.
IMPERVIOUS SURFACE AREA RATIO	43.9%
BUILDING AREA RATIO	25.5%

PROJECT DATA

PROJECT NAME: SUMMER BEACH PARCEL
 PARCEL ID#: 00-00-30-0820-0006-0010
 APPROVED PUD ORDINANCE NO.: SUMMER BEACH CONSOLIDATED DRI/PUD - RESOLUTION NO. 2007-105
 CURRENT LAND USE: COMMERCIAL
 CURRENT ZONING: PUD

PROJECT INTENT:
 TO DEVELOP 28 CONDOMINIUM UNITS ON 3.21 ACRES

DEVELOPMENT SCHEDULE:
 1 PHASE

BUILDING UNIT SUMMARY:
 UNIT = ± 5,100 SF
 HEIGHT = LESS THAN 45'

PARKING:
 2 SPACES/UNIT (2 GARAGE)
 REQUIRED SPACES: 56
 PROVIDED SPACES: 56

OWNER
 J.H. COBB PROPERTIES, INC
 10138 WHIPPOORWILL LANE
 JACKSONVILLE, FL 32256
 (904) 261-7360

DEVELOPER
 FORUM CAPITAL PARTNERS
 9995 GATE PARKWAY, SUITE 400
 JACKSONVILLE, FL 32256
 (904) 928-3912

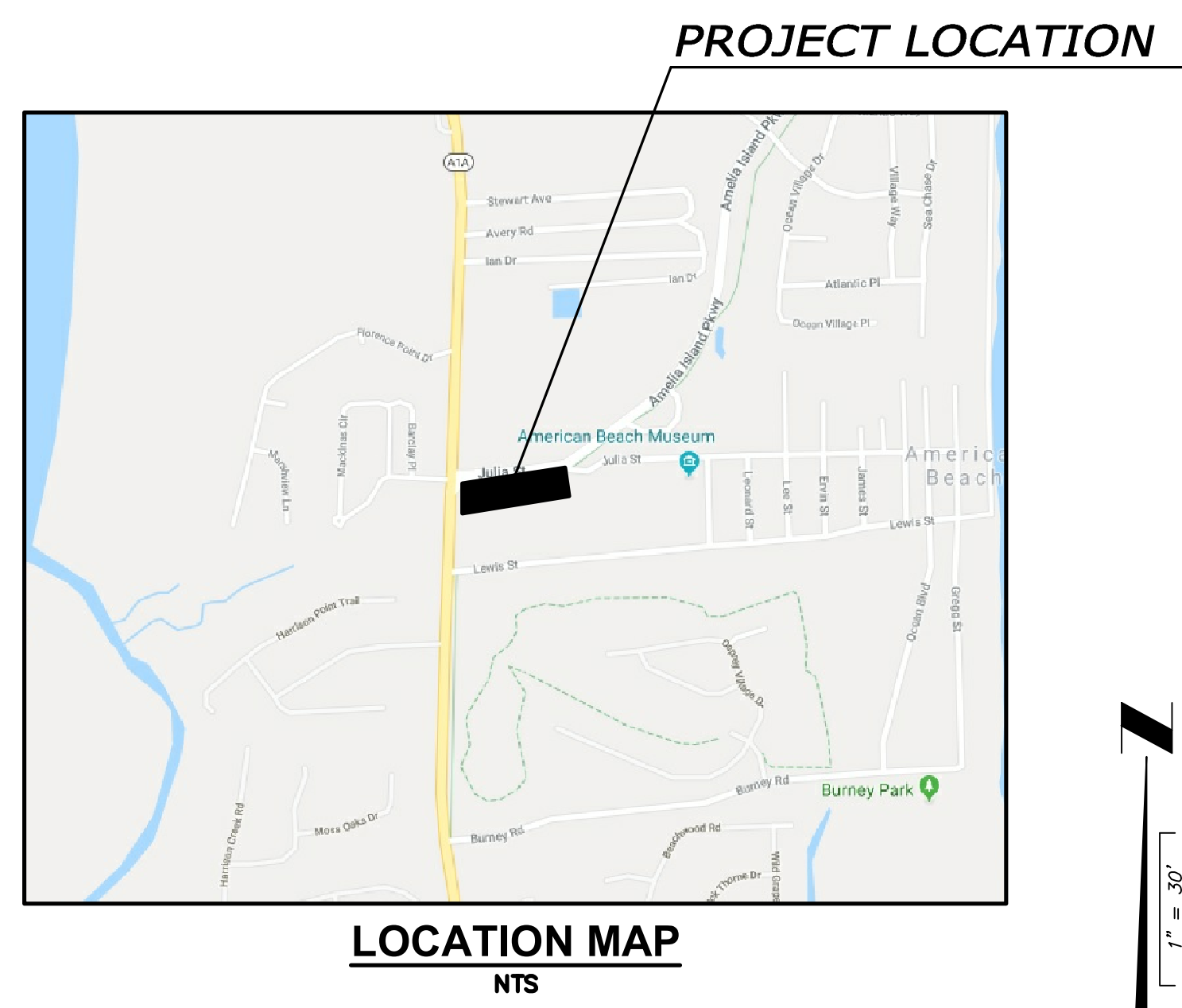
CONTACT: MORGAN BROWN

DESIGN PROFESSIONAL
 CONNELLY & WICKER INC
 10060 SKINNER LAKE DR., SUITE 500
 JACKSONVILLE, FL 32246
 (904) 265-3030

CONTACT: RICHARD WELCH, PE

SURVEYOR
 A & J LAND SURVEYORS, INC.
 5847 LUELLA STREET
 JACKSONVILLE BEACH, FL 32207
 (904) 346-1733

INDEX OF SHEETS	
SHEET	TITLE
C100	FINAL DEVELOPMENT PLAN
C101	FINAL DEVELOPMENT GRADING PLAN
C102	FINAL DEVELOPMENT UTILITY PLAN
TM100	TREE REMOVAL & PROTECTION PLAN
TM102 - TM105	TREE EVALUATION AND MITIGATION TABLE
LA100	LANDSCAPE PLAN
LA101	LANDSCAPE SPECIFICATION
S100	SURVEY
A100	ELEVATION



CONNELLY & WICKER INC.
 Planning · Engineering · Landscape Architecture
 10060 Skinner Lake Drive, Suite 500 Jacksonville, Florida 32246
 (904) 256-3030 FAX: (904) 265-3031 www.cweng.com
 Florida Registry 3650 L.A. Number: LC26000311

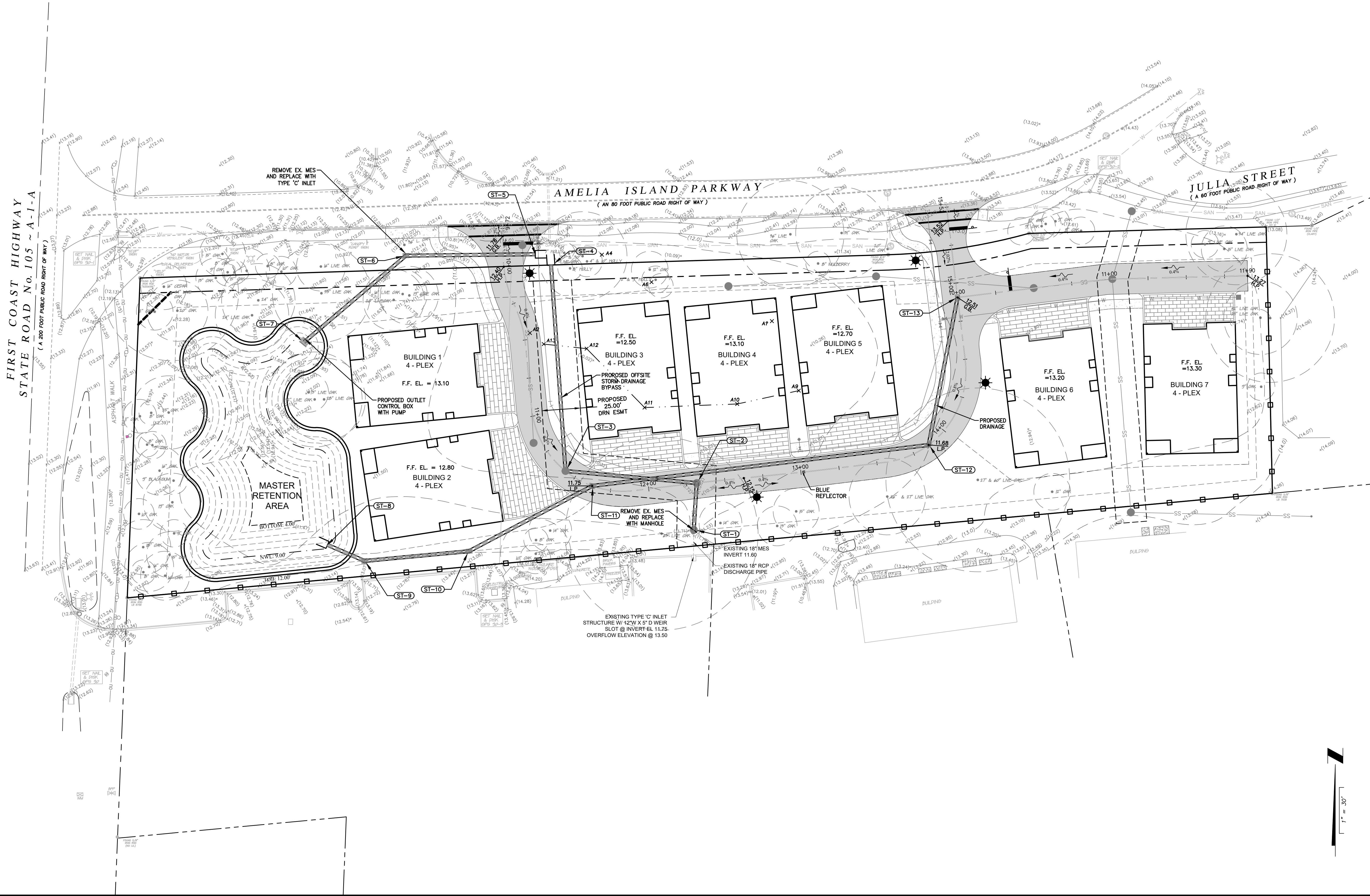
No.	Date	Revision	By

FINAL DEVELOPMENT PLAN

SUMMER BEACH PARCEL
NASSAU COUNTY
 PREPARED FOR
FORUM CAPITAL PARTNERS

Project No.: 20-01-0014
 Designed: MEL Drawn: ANB
 Checked: RCW O.C.
 Date: MAY 26, 2020
 Scale: 1" = 30'

THIS DRAWING IS THE PROPERTY OF CONNELLY & WICKER INC. AND IS NOT TO BE REPRODUCED OR COPIED IN WHOLE OR IN PART. IT IS NOT TO BE USED ON ANY OTHER PROJECT AND IS TO BE RETURNED ON REQUEST.



No.	Date	Revision

FINAL DEVELOPMENT GRADING PLAN

SUMMER BEACH PARCEL
NASSAU COUNTY
 PREPARED FOR
FORUM CAPITAL PARTNERS

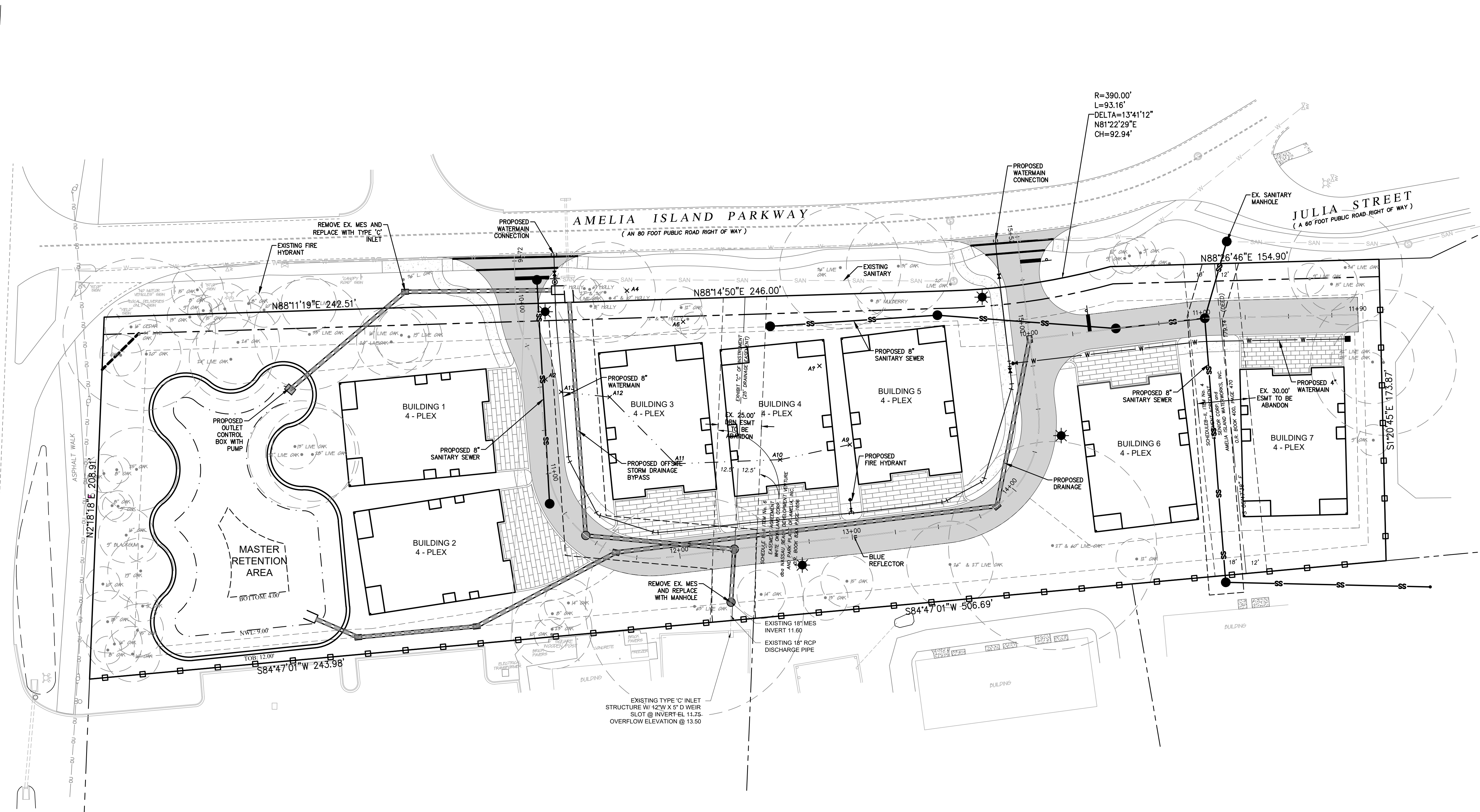
MARY E. LEAPROTT, P.E.
 P.E. NUMBER: 61449
 Reg. Engineer

Project No.: 20-01-0014
 Designed: MEL Drawn: ANB
 Checked: RCW O.C.: RCW
 Date: MAY 26, 2020
 Scale: 1" = 30'

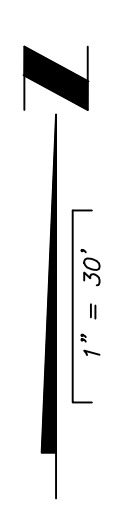
Sheet **C101**

THIS DRAWING IS THE PROPERTY OF CONNELLY & WICKER INC. AND IS NOT TO BE REPRODUCED OR COPIED IN WHOLE OR IN PART. IT IS NOT TO BE USED ON ANY OTHER PROJECT AND IS TO BE RETURNED ON REQUEST.

FIRST COAST HIGHWAY
STATE ROAD No. 105 ~ A-1-A
(A 200 FOOT PUBLIC ROAD RIGHT OF WAY)



- NOTES:**
1. ALL DIMENSIONS ARE TO EDGE OF PAVEMENT UNLESS OTHERWISE NOTED.
 2. CONTRACTOR SHALL PROVIDE CURB RAMPS AT ALL PLACES WHERE SIDEWALK TERMINATES INTO PAVEMENT. CURB RAMPS SHALL COMPLY WITH THE LATEST ADA CODE PER FDOT STD 522-002 (FY 2020-2021).
 3. ALL STRIPING, PAVEMENT MARKINGS, AND RPM'S SHALL BE IN ACCORDANCE WITH FDOT STD 711-001 (EXTRUDED THERMOPLASTIC MATERIAL SHALL BE USED).
 4. STOP BARS SHALL BE LOCATED 4.0' MIN. FROM CROSSWALKS AND / OR CURB RAMPS.
 5. ALL ELEMENTS THAT ARE PLACES OF PUBLIC ACCOMMODATIONS AND COMMERCIAL FACILITIES ON THE SITE (INCLUDING ACCESSIBLE ROUTES AND PARKING) SHALL MEET THE REQUIREMENTS OF "FLORIDA AMERICANS WITH DISABILITIES ACCESSIBILITY IMPLEMENTATION ACT", 2010 ADA STANDARDS FOR ACCESSIBLE DESIGN AND 2012 FLORIDA ACCESSIBILITY CODE FOR BUILDING CONSTRUCTION AND THE FAIR HOUSING ACT, WHEN APPLICABLE.
 6. A 36" CLEAR SPACE SHALL BE MAINTAINED AROUND THE CIRCUMFERENCE OF THE FIRE HYDRANTS EXCEPT AS OTHERWISE REQUIRED OR APPROVED (NFPA 1:18.5.3).
 7. A CLEAR SPACE OF NOT LESS THAN 60" SHALL BE PROVIDED IN FRONT OF EACH HYDRANT CONNECTION HAVE A DIAMETER GREATER THAT 2.5" (NFPA 1:18.5.7.2).



OW Connelly & Wicker Inc.
 Planning · Engineering · Landscape Architecture
 10060 Summer Lake Drive, Suite 500 Jacksonville, Florida 32246
 (904) 256-3030 FAX: (904) 265-3031 www.owc.com
 Florida Registry 5650 L.A. Number: LC26000311

No.	Date	Revision

**FINAL DEVELOPMENT
UTILITY PLAN**

**SUMMER BEACH
PARCEL
NASSAU COUNTY**
 PREPARED FOR
FORUM CAPITAL PARTNERS

MARY E. LEAPROTT, P.E.
P.E. NUMBER: 61449
Reg. Engineer

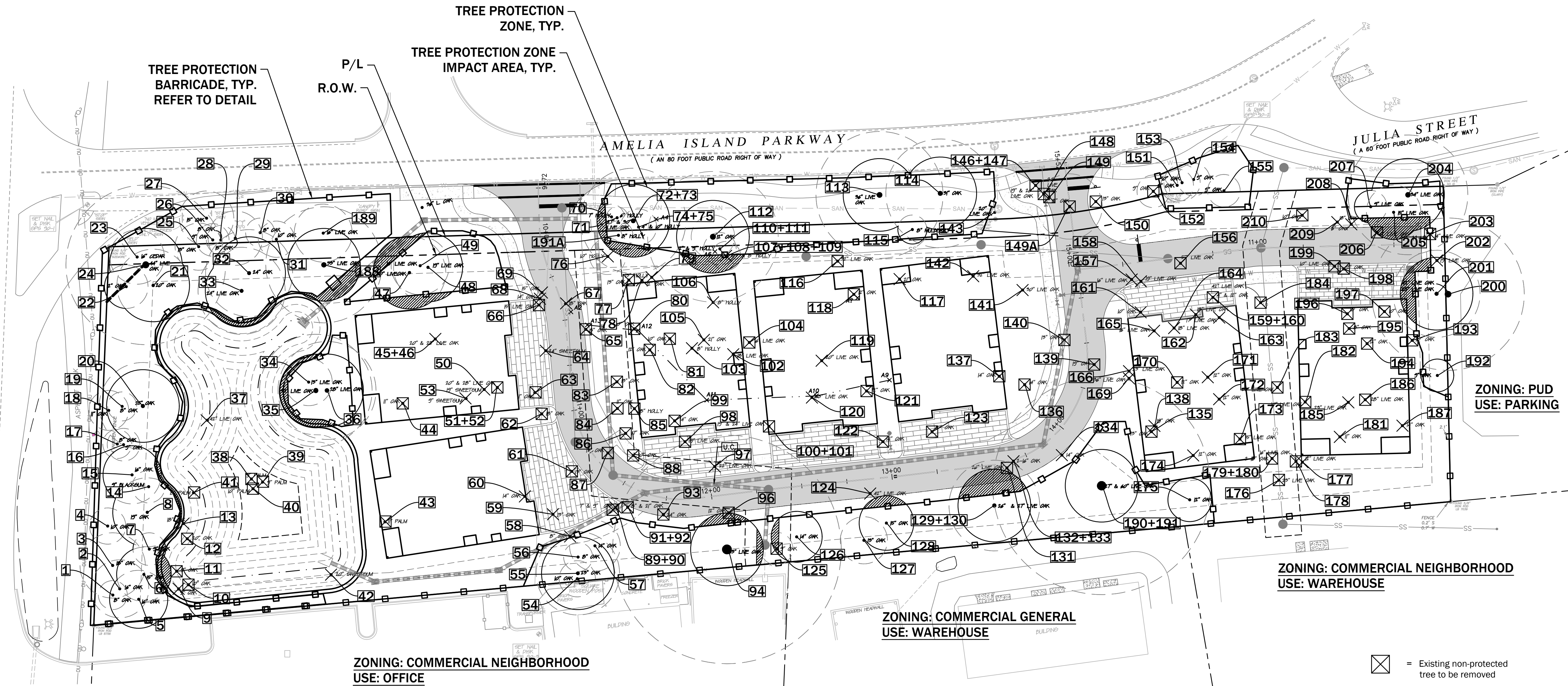
Project No.: 20-01-0014
 Designed: MEL Drawn: ANB
 Checked: O.C. RCW
 Date: MAY 26, 2020
 Scale: 1" = 30'

Sheet **C102**

THIS DRAWING IS THE PROPERTY OF CONNELLY & WICKER INC. AND IS NOT TO BE REPRODUCED OR COPIED IN WHOLE OR IN PART. IT IS NOT TO BE USED ON ANY OTHER PROJECT AND IS TO BE RETURNED ON REQUEST.

FIRST COAST HIGHWAY
STATE ROAD No. 105 ~ A-1-A
(A 200 FOOT PUBLIC ROAD RIGHT OF WAY)

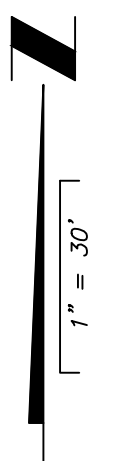
- MITIGATION FOR IMPACT TO PROTECTED TREES WITHIN TREE PROTECTION ZONE:**
- UTILIZE TREE SURGEON TO CLEANLY CUT PROTRUDING ROOTS AT LIMITS OF DISTURBANCE TO THE REQUIRED DEPTH
 - BACKFILL WITH TOPSOIL NATIVE TO THE SITE AND AMENDED WITH 5% PINE BARK COMPOST BY VOLUME. WATER-IN IMMEDIATELY TO PROVIDE A SURFACE LEVEL WITH FINISHED GRADE
 - PROVIDE 6" PINE BARK MULCH AS SPECIFIED OVER ALL DISTURBED AREAS.



I, Alfred B. Pittman, am a certified arborist through the International Society of Arboriculture and my certification number is 4752A. I hereby attest that I have prepared this tree protection plan and/or restoration plan. This includes not only the evaluation of individual trees but also review of the complete construction plan set and the techniques that will be utilized to mitigate impacts to protected trees. Further, I attest that the best practices, as supported by the International Society of Arboriculture, are being implemented to avoid and mitigate impacts to protected trees.

Print Name: Alfred B. Pittman
Digital Signature: _____ Date: 04-08-2020

Install tree protection barricade according to the detail in these plans and prior to site clearing and construction activity. Leave barricade intact and in place during construction and remove only when irrigation and landscape plans are ready for installation. Silt fence may be used for tree protection when located at the Limits of Disturbance.



Connelly & Wicker Inc.
 Planning · Engineering · Landscape Architecture
 10060 Summer Lakes Drive, Suite 500 Jacksonville, Florida 32246
 (904) 256-3030 FAX: (904) 265-3031 www.cwinc.com
 Florida Registry 5650 L.A. Number: LC26000311

SUMMER BEACH PARCEL
NASSAU COUNTY
 PREPARED FOR
FORUM CAPITAL PARTNERS

TREE REMOVAL & PROTECTION PLAN

ZONING: COMMERCIAL NEIGHBORHOOD USE: WAREHOUSE

ZONING: PUD USE: PARKING

Project No.: 20-01-0014
 Designed: MEL Drawn: ANB
 Checked: RCW O.C.: RCW
 Date: MAY 26, 2020
 Scale: 1" = 30'

Alfred B. Pittman, RLA
 LA-1601
 Reg. Landscape Architect

THIS DRAWING IS THE PROPERTY OF CONNELLY & WICKER INC. AND IS NOT TO BE REPRODUCED OR COPIED IN WHOLE OR IN PART. IT IS NOT TO BE USED ON ANY OTHER PROJECT AND IS TO BE RETURNED ON REQUEST.

Sheet **TM100**

Amelia Island Parkway
TREE EVALUATION
April 8, 2020

Location: Amelia Island Parkway, Amelia Island, FL
Protected Tree Jurisdiction: Nassau County, Florida
Development Type: Multifamily
Date of Evaluation: 3-28-18, 2-9-20
Evaluator: Alfred B. Pittman Certified arborist (FL-5641A) and Landscape Architect (Florida LA-1601)
PITTMAN LANDSCAPE ARCHITECTURE
4049 San Servera Drive North
Jacksonville, Florida 32217

Notes: Tree locations and sizes based on tree survey provided by Connelly & Wicker, dated January 2017. This evaluation supersedes the tree survey where discrepancies arise. Evaluated trees are flagged with white or neon pink tape and numbered according to this table

Recommended Action and final inches and mitigation amounts are based on the proposed site plan.

Calculations based on current Nassau County LDC

Main tree evaluation table with columns: Tree No. (See Plan), Tree Size (Inches DBH), Common Name (Botanical Name), Condition, Recommended Action, Protected Status by Ordinance (Y or N), PROTECTED TREE (6"+) Removed Inches, PROTECTED TREE (6"+) Preserved Inches, BONUS (125%).

80th Percentile Calculation table with columns: Tree No. (See Plan), Tree Size (Inches DBH), Tree Set.

Logo for Connelly & Wicker Inc. with text: Planning, Engineering, Landscape Architecture. Address: 10060 Skimmer Lake Drive, Suite 500 Jacksonville, Florida 32246. Phone: (904) 256-3030, Fax: (904) 265-3031, www.cwinc.com, Florida Registry 3650 L.A. Number: LC26000311

Revision table with columns: No., Date, Revision.

TREE EVALUATION AND
MITIGATION TABLE

SUMMER BEACH
PARCEL
NASSAU COUNTY
PREPARED FOR
FORUM CAPITAL PARTNERS

ALFRED B. PITTMAN, R.L.A.
LA-1601
Reg. Landscape Architect

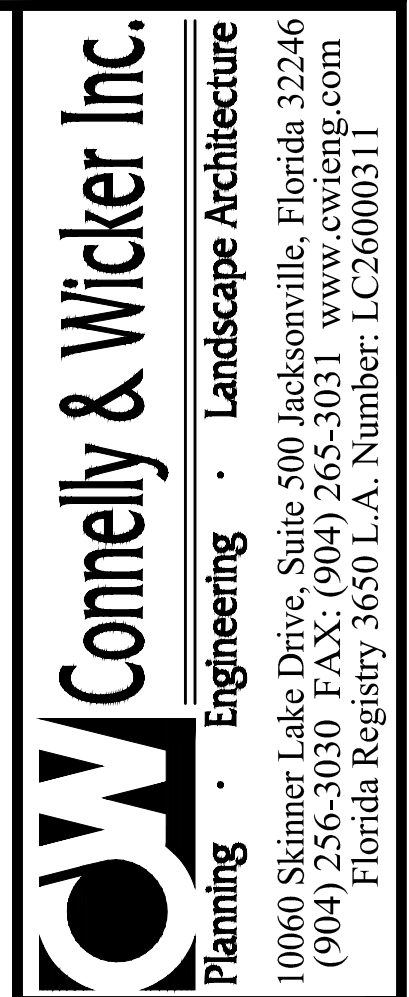
Project No.: 20-01-0014
Designed: MEL Drawn: ANB
Checked: RCW O.C.: RCW
Date: MAY 26, 2020
Scale:

THIS DRAWING IS THE PROPERTY OF CONNELLY & WICKER INC. AND IS NOT TO BE REPRODUCED OR COPIED IN WHOLE OR IN PART. IT IS NOT TO BE USED ON ANY OTHER PROJECT AND IS TO BE RETURNED ON REQUEST.

Tree No. (See Plan)	Tree Size (Inches DBH)	Common Name (Botanical Name)	Condition	Recommended Action	Protected Status by Ordinance (Y or N)	PROTECTED TREE (6'+) Removed Inches	PROTECTED TREE (6'+) Preserved Inches	BONUS (125%)
54	10	Laurel oak (Quercus laurifolia)	Deformed crown	Preserve	N			
55	23	Laurel oak (Quercus laurifolia)	Good condition, healthy	Preserve	Y		23	
56	8	Water oak (Quercus nigra)	Main leader dead, Not Native Canopy Tree	Preserve	N			
57	9	Water oak (Quercus nigra)	Good condition, healthy, Not Native Canopy Tree	Preserve	N			
58	8	Laurel oak (Quercus laurifolia)	Fair condition, healthy	Remove for construction	Y	8		
59	13	Sweetgum (Liquidambar styraciflua)	Good condition, healthy	Remove for construction	Y	13		
60	14	Live oak (Quercus virginiana)	Fair condition, healthy	Remove for construction	Y	14		
61	13	Water oak (Quercus nigra)	Good condition, healthy, Not Native Canopy Tree	Remove for construction	N			
62	18	Live oak (Quercus virginiana)	Multi Trunk, half of tree dead and decaying	Remove for construction	N			
63	11	Water oak (Quercus nigra)	Deformed crown with advanced dieback, Not Native Canopy Tree	Remove for construction	N			
64	24	Sweetgum (Liquidambar styraciflua)	Fair condition, leaning, healthy	Remove for construction	Y	24		
65	8	Water oak (Quercus nigra)	Main leader dead, Not Native Canopy Tree	Remove for construction	N			
66	15	Live oak (Quercus virginiana)	Main leader dead	Remove for construction	N			
67	18	Live oak (Quercus virginiana)	Fair condition, healthy	Remove for construction	Y	18		
68	14	Live oak (Quercus virginiana)	Fair condition, significantly leaning, healthy	Remove for construction	Y	14		
69	15	Live oak (Quercus virginiana)	Fair condition, significantly leaning, healthy	Remove for construction	Y	15		
70	7	American holly (Ilex opaca)	Good condition, healthy	R.O.W. Preserve	Y			
71	6	American holly (Ilex opaca)	Good condition, healthy	R.O.W. Preserve	Y			
72	27	Live oak (Quercus virginiana)	Multi trunk, specimen, good condition, healthy	R.O.W. Preserve	Y			
73	30	Live oak (Quercus virginiana)	Multi trunk, good condition, healthy	R.O.W. Preserve	Y			
74	4	American holly (Ilex opaca)	Good condition, healthy	R.O.W. Preserve	N			
75	10	American holly (Ilex opaca)	Good condition, healthy	R.O.W. Preserve	Y			
76	10	American holly (Ilex opaca)	Good condition, healthy	Remove for construction	Y		10	
77	13	Water oak (Quercus nigra)	Major openings at base with internal decay, Not Native Canopy Tree	Remove for construction	N			
78	12	Live oak (Quercus virginiana)	Good condition, healthy	Remove for construction	Y	12		
79	13	American holly (Ilex opaca)	Fair condition, significantly leaning, healthy	Remove for construction	Y	13		
80	10	Water oak (Quercus nigra)	Fair condition, healthy, Not Native Canopy Tree	Remove for construction	N			
81	10	Water oak (Quercus nigra)	Fair condition, healthy, Not Native Canopy Tree	Remove for construction	N			
82	12	Water oak (Quercus nigra)	Fair condition, healthy, Not Native Canopy Tree	Remove for construction	N			
83	13	Water oak (Quercus nigra)	Main leader dead, Not Native Canopy Tree	Remove for construction	N			
84	11	Water oak (Quercus nigra)	Good condition, healthy, Not Native Canopy Tree	Remove for construction	N			
85	8	American holly (Ilex opaca)	Deformed crown, main leader broken off	Remove for construction	N			
86	17	Water oak (Quercus nigra)	Storm damaged, half blown over with raised rootball, Not Native Canopy Tree	Remove for construction	N			
87	13	Water oak (Quercus nigra)	#86 blown into, Not Native Canopy Tree	Remove for construction	N			
88	17	Water oak (Quercus nigra)	Dead main leader, storm damaged, Not Native Canopy Tree	Remove for construction	N			
89	7	Laurel oak (Quercus laurifolia)	Significant trunk wound with internal decay	Remove for construction	N			
90	9	Laurel oak (Quercus laurifolia)	Fair condition, healthy	Remove for construction	Y	9		
91	21	Laurel oak (Quercus laurifolia)	Major trunk openings, with advanced internal decay	Remove for construction	N			
92	8	Laurel oak (Quercus laurifolia)	Dead main leader, deformed	Remove for construction	N			
93	24	Water oak (Quercus nigra)	Main leader fallen out, trunk openings with visible decay, tree in decline, Not Native Canopy Tree	Remove for construction	N			
94	63	Live oak (Quercus virginiana)	Good condition, healthy, Specimen	Preserve	Y		63	16
96	12	Water oak (Quercus nigra)	Fair condition, healthy, Not Native Canopy Tree	Remove for construction	N			
97	22	Live oak (Quercus virginiana)	Fair condition, healthy	Remove for construction	Y	22		
98	19	Live oak (Quercus virginiana)	Major trunk wound at base with internal decay	Remove for construction	N			
99	14	Water oak (Quercus nigra)	Fair condition, healthy, Not Native Canopy Tree	Remove for construction	N			
100	19	Live oak (Quercus virginiana)	Multi Trunk, old lightning injuries with dead main leaders and decay, tree in decline	Remove for construction	N			
101	24	Live oak (Quercus virginiana)	Multi Trunk, old lightning injuries with dead main leaders and decay, tree in decline	Remove for construction	N			
102	18	Live oak (Quercus virginiana)	Fair condition, healthy	Remove for construction	Y	18		
103	8	American holly (Ilex opaca)	Good condition, healthy	Remove for construction	Y	8		
104	16	Live oak (Quercus virginiana)	Significant lean, co dominant stems, thin deformed crown, large opening at base	Remove for construction	N			
105	21	Live oak (Quercus virginiana)	Fair condition, healthy	Remove for construction	Y	21		
106	8	American holly (Ilex opaca)	Good condition, healthy	Remove for construction	Y	8		
107	3	American holly (Ilex opaca)	Good condition, healthy	Remove for construction	N			
108	7	American holly (Ilex opaca)	Good condition, healthy	Remove for construction	Y	7		
109	8	American holly (Ilex opaca)	Good condition, healthy	Remove for construction	Y	8		
110	2	American holly (Ilex opaca)	Good condition, healthy	Preserve	N			
111	9	American holly (Ilex opaca)	Good condition, healthy	Preserve	Y		9	
112	37	Live oak (Quercus virginiana)	Specimen, good condition, healthy	R.O.W. Preserve	Y			
113	36	Live oak (Quercus virginiana)	Good condition, healthy	R.O.W. Preserve	Y			
114	31	Live oak (Quercus virginiana)	Significant injury at base with internal decay	R.O.W. Preserve	N			
115	8	Red mulberry (Morus rubra)	Good condition, healthy, Not Native Canopy Tree	R.O.W. Preserve	N			
116	32	Live oak (Quercus virginiana)	Old lightning strike, main leader dead, trunk split with advanced decay	Remove for construction	N			
117	21	Live oak (Quercus virginiana)	Fair condition, healthy	Remove for construction	Y	21		
118	12	Laurel oak (Quercus laurifolia)	Top dead	Remove for construction	N			
119	20	Live oak (Quercus virginiana)	Fair condition, healthy	Remove for construction	Y	20		
120	23	Live oak (Quercus virginiana)	Fair condition, healthy	Remove for construction	Y	23		
121	12	Water oak (Quercus nigra)	Significant trunk wound at base with internal decay, dieback in crown, Not Native Canopy Tree	Remove for construction	N			
122	14	Laurel oak (Quercus laurifolia)	Top dead	Remove for construction	N			
123	10	Water oak (Quercus nigra)	Good condition, healthy, Not Native Canopy Tree	Remove for construction	N			
124	42	Live oak (Quercus virginiana)	Fair condition, healthy	Remove for construction	Y	42		
125	9	Water oak (Quercus nigra)	Fair condition, healthy, Not Native Canopy Tree	Remove for construction	N			
126	14	Laurel oak (Quercus laurifolia)	Deformed crown, storm damage	Preserve	N			
127	13	Laurel oak (Quercus laurifolia)	Fair condition, healthy	Preserve	Y		13	
128	15	Laurel oak (Quercus laurifolia)	Deformed crown, storm damage	Preserve	N			
129	26	Live oak (Quercus virginiana)	Multi trunk, good condition, healthy	Preserve	Y		26	7
130	27	Live oak (Quercus virginiana)	Multi trunk, good condition, healthy	Preserve	Y		27	7
131	26	Live oak (Quercus virginiana)	Main leader dead/fallen out, storm damage to other stem	Remove for construction	N			

Tree No. (See Plan)	Tree Size (Inches DBH)	Tree Set
202	19	54
42	20	55
45	20	56
47	20	57
119	20	58
171	20	59
105	21	60
117	21	61
48	22	62
97	22	63
55	23	64
120	23	65
165	23	66
166	23	67
185	23	68
32	24	69
33	24	70
64	24	71
20	25	72
201	25	73
129	26	74
72	27	75
130	27	76
190	27	77
36	28	78
73	30	79
141	30	80
35	32	81
142	32	82
188	33	83
204	34	84
169	36	85
112	37	86
37	42	87
124	42	88
200	42	89
24	44	90
191	60	91
94	63	92

TREES IN SET	92
80th Percentile	74



10060 Skimmer Lake Drive, Suite 500 Jacksonville, Florida 32246
 (904) 256-3030 FAX: (904) 265-3031 www.connelly.com
 Florida Registry 5650 L.A. Number: LC26000311

TREE EVALUATION AND MITIGATION TABLE

SUMMER BEACH
PARCEL
NASSAU COUNTY
PREPARED FOR
FORUM CAPITAL PARTNERS

ALFRED B. PITTMAN, RLA
LA-1601
Reg. Landscape Architect

Project No.:
20-01-0014
Designed:
MEL
Checked:
RCW
Date:
MAY 26, 2020
Scale:

Sheet **TM103**

THIS DRAWING IS THE PROPERTY OF CONNELLY & WICKER INC. AND IS NOT TO BE REPRODUCED OR COPIED IN WHOLE OR IN PART. IT IS NOT TO BE USED ON ANY OTHER PROJECT AND IS TO BE RETURNED ON REQUEST.

Tree No. (See Plan)	Tree Size (Inches DBH)	Common Name (Botanical Name)	Condition	Recommended Action	Protected Status by Ordinance (Y or N)	PROTECTED TREE (6"+) Removed Inches	PROTECTED TREE (6"+) Preserved Inches	BONUS (125%)
132	16	Live oak (Quercus virginiana)	Multi trunk, good condition, healthy	Remove for construction	Y	16		
133	16	Live oak (Quercus virginiana)	Multi trunk, good condition, healthy	Remove for construction	Y	16		
134	14	Laurel oak (Quercus laurifolia)	Fair condition, healthy	Remove for construction	Y	14		
135	13	Laurel oak (Quercus laurifolia)	Large opening at base with internal decay. Decay/fungus in lower crown	Remove for construction	N			
136	14	Water oak (Quercus nigra)	Significant trunk opening mid trunk with internal decay, dead lower limbs with decay. Not Native Canopy Tree	Remove for construction	N			
137	14	Laurel oak (Quercus laurifolia)	Trunk wound at base with internal decay	Remove for construction	N			
138	19	Laurel oak (Quercus laurifolia)	Fair condition, healthy	Remove for construction	Y	19		
139	19	Laurel oak (Quercus laurifolia)	Trunk damage at base with decay, main leader fallen out	Remove for construction	N			
140	13	Water oak (Quercus nigra)	Major wound at base with advanced decay. Not Native Canopy Tree.	Remove for construction	N			
141	30	Live oak (Quercus virginiana)	Good condition, healthy	Remove for construction	Y	30		
142	32	Live oak (Quercus virginiana)	Good condition, healthy. Specimen	Remove for construction	Y	32		
143		Not there. Survey error						
146	19	Live oak (Quercus virginiana)	Multi Trunk, main leader deformed with significant dieback and dead hangers, decay	R.O.W. Remove for construction	N			
147	20	Live oak (Quercus virginiana)	Multi Trunk, main leader deformed with significant dieback and dead hangers, decay	R.O.W. Remove for construction	N			
148	24	Live oak (Quercus virginiana)	Significant opening at base with internal decay, deformed crown with loss of limbs, decay	R.O.W. Remove for construction	N			
149	8	Laurel oak (Quercus laurifolia)	Tree almost dead, poison ivy strangled	R.O.W. Remove for construction	N			
149A	18	Live oak (Quercus virginiana)	Existing tree not shown on survey. Significant wounds at base with decay, opening in trunk with decay, deformed crown, poor structure	R.O.W. Remove for construction	N			
150	13	Water oak (Quercus nigra)	Good condition, healthy. Not Native Canopy Tree	R.O.W. Remove for construction	N			
151	9	Laurel oak (Quercus laurifolia)	Storm damaged, half blown over	R.O.W. Preserve	N			
152	9	Water oak (Quercus nigra)	Dead	R.O.W. Remove for construction	N			
153	10	Water oak (Quercus nigra)	Main leader broken off. Not Native Canopy Tree	R.O.W. Preserve	N			
154	9	Water oak (Quercus nigra)	Fair condition, healthy. Not Native Canopy Tree	R.O.W. Preserve	N			
155	9	Laurel oak (Quercus laurifolia)	Fair condition, relatively healthy	R.O.W. Preserve	Y		9	
156	57	Live oak (Quercus virginiana)	Multi trunk, mature tree with major storm damage on one leader. One stem with opening and decay, dieback, one stem dead	Remove for construction	N			
157	16	Live oak (Quercus virginiana)	Good condition, healthy	Remove for construction	Y	16		
158	19	Live oak (Quercus virginiana)	Good condition, healthy	Remove for construction	Y	19		
159	4	Water oak (Quercus nigra)	Multi Trunk, main leaders broken off, storm damaged. Not Native Canopy Tree.	Remove for construction	N			
160	12	Water oak (Quercus nigra)	Multi Trunk, main leaders broken off, storm damaged. Not Native Canopy Tree.	Remove for construction	N			
161	10	Laurel oak (Quercus laurifolia)	Good condition, healthy	Remove for construction	Y	10		
162	18	Live oak (Quercus virginiana)	Good condition, healthy	Remove for construction	Y	18		
163	17	Live oak (Quercus virginiana)	Good condition, healthy	Remove for construction	Y	17		
164	18	Live oak (Quercus virginiana)	Good condition, healthy	Remove for construction	Y	18		
165	23	Live oak (Quercus virginiana)	Good condition, healthy	Remove for construction	Y	23		
166	23	Live oak (Quercus virginiana)	One limb dead, overall healthy	Remove for construction	Y	23		
169	36	Live oak (Quercus virginiana)	Multitrunk, one stem dead, no decay. Fair condition, healthy	Remove for construction	Y	36		
170	12	Laurel oak (Quercus laurifolia)	Major trunk wound with internal decay	Remove for construction	N			
171	20	Live oak (Quercus virginiana)	Good condition, healthy	Remove for construction	Y	20		
172	12	Laurel oak (Quercus laurifolia)	Fair condition, healthy	Remove for construction	Y	12		
173	15	Live oak (Quercus virginiana)	Major injury to main leader with internal decay, storm damage	Remove for construction	N			
174	12	Laurel oak (Quercus laurifolia)	Fair condition, healthy	Remove for construction	Y	12		
175	44	Live oak (Quercus virginiana)	Major storm damage to two main stems, trunk wound with decay	Preserve	N			
176	23	Live oak (Quercus virginiana)	Major storm damage to main leader	Remove for construction	N			
177	12	Live oak (Quercus virginiana)	Fair condition, one dead limb, relatively healthy	Remove for construction	Y	12		
178	23	Live oak (Quercus virginiana)	Deformed leader with trunk shear and openings	Remove for construction	N			
179	16	Live oak (Quercus virginiana)	Multi Trunk, one stem dead with decay, storm damage to crown	Remove for construction	N			
180	16	Live oak (Quercus virginiana)	Multi Trunk, one stem dead with decay, storm damage to crown	Remove for construction	N			
181	11	Laurel oak (Quercus laurifolia)	Fair condition, healthy	Remove for construction	Y	11		
182	10	Live oak (Quercus virginiana)	Deformed leader, major tree conflict	Remove for construction	N			
183	33	Live oak (Quercus virginiana)	Multi trunk. One stem with major shear damage and decay, trunk openings. One stem deformed and damaged	Remove for construction	N			
184	42	Live oak (Quercus virginiana)	Storm-damaged, central leader broken out, stress shear on remaining main leader	Remove for construction	N			
185	23	Live oak (Quercus virginiana)	Fair condition, healthy	Remove for construction	Y	23		
186	28	Live oak (Quercus virginiana)	Very significant lean, significant storm damage to main leader, broken off, some dieback	Remove for construction	N			
187	14	Laurel oak (Quercus laurifolia)	Fair condition, healthy	Remove for construction	Y	14		
188	33	Live oak (Quercus virginiana)	Multi trunk specimen, good condition, healthy	Preserve	Y		33	8
189	16	Live oak (Quercus virginiana)	Good condition, healthy	R.O.W. Preserve	Y			
190	27	Live oak (Quercus virginiana)	Multi trunk specimen, good condition, healthy	Preserve	Y		27	7
191	60	Live oak (Quercus virginiana)	Multi trunk specimen, good condition, healthy	Preserve	Y		60	15
191A	8	American holly (Ilex opaca)	Good condition, healthy	R.O.W. Preserve	Y			
192	9	Water oak (Quercus nigra)	Good condition, healthy	Preserve	N			
193	10	Water oak (Quercus nigra)	Trunk openings mid-trunk and upper trunk with internal decay. Not Native Canopy Tree	Remove for construction	N			
194	12	Water oak (Quercus nigra)	Good condition, healthy. Not Native Canopy Tree	Remove for construction	N			
195	8	Water oak (Quercus nigra)	Good condition, healthy. Not Native Canopy Tree	Remove for construction	N			
196	10	Water oak (Quercus nigra)	Good condition, healthy. Not Native Canopy Tree	Remove for construction	N			
197	10	Laurel oak (Quercus laurifolia)	Significant lean. Major trunk injuries with internal decay	Remove for construction	N			
198	12	Water oak (Quercus nigra)	Main leader deformed, secondary leader broken off, trunk injury with peeling bark and decay. Not Native Canopy Tree	Remove for construction	N			

Tree No. (See Plan)	Tree Size (Inches DBH)	Tree Set

OW Connelly & Wicker Inc.
 Planning • Engineering • Landscape Architecture
 10060 Summer Lake Drive, Suite 500 Jacksonville, Florida 32246
 (904) 256-3030 FAX: (904) 265-3031 www.owcwa.com
 Florida Registry 3650 L.A. Number: LC26000311

TREE EVALUATION AND MITIGATION TABLE

SUMMER BEACH PARCEL
 PREPARED FOR
 NASSAU COUNTY
 FORUM CAPITAL PARTNERS

ALFRED B. PITTMAN, RLA
 LA-1601
 Reg. Landscape Architect

Project No.: 20-01-0014	
Designed: MEL	Drawn: ANB
Checked: RCW	O.C.: RCW
Date: MAY 26, 2020	
Scale:	

Sheet **TM104**

THIS DRAWING IS THE PROPERTY OF CONNELLY & WICKER INC. AND IS NOT TO BE REPRODUCED OR COPIED IN WHOLE OR IN PART. IT IS NOT TO BE USED ON ANY OTHER PROJECT AND IS TO BE RETURNED ON REQUEST.

Tree No. (See Plan)	Tree Size (Inches DBH)	Common Name (Botanical Name)	Condition	Recommended Action	Protected Status by Ordinance (Y or N)	PROTECTED TREE (6"*) Removed Inches	PROTECTED TREE (6"*) Preserved Inches	BONUS (125%)
199	10	Live oak (Quercus virginiana)	Major trunk injury to main leader due to conflict with Tree 198, trunk 50% worn-through	Remove for construction	N			
200	42	Live oak (Quercus virginiana)	Good condition, healthy	Preserve	N			
201	25	Live oak (Quercus virginiana)	Good condition, healthy. Branches and roots part of Tree 200	Preserve	N*			
202	19	Live oak (Quercus virginiana)	Vine-infested. Secondary leader broken off, main leader healthy	Remove for construction	Y	19		
203	14	Laurel oak (Quercus laurifolia)	Significant lean. Trunk injuries with decay, poor structure	Remove for construction	Y N			
204	34	Live oak (Quercus virginiana)	Good condition, healthy	R.O.W. Preserve	Y			
205	15	Laurel oak (Quercus laurifolia)	Good condition, healthy	Preserve	Y		15	
206	6	Laurel oak (Quercus laurifolia)	Main leader broken off	Remove for construction	Y N			
207	9	Laurel oak (Quercus laurifolia)	Good condition, healthy	Preserve	Y		9	
208	6	Laurel oak (Quercus laurifolia)	Good condition, healthy	Remove for construction	Y	6		
209	13	Laurel oak (Quercus laurifolia)	Good condition, healthy but with significant lean	Remove for construction	Y	13		
210	10	Water oak (Quercus nigra)	Good condition, healthy. Not Native Canopy Tree	Remove for construction	Y N			
205	15	Laurel oak (Quercus laurifolia)	Good condition, healthy	Preserve	Y		15	
206	6	Laurel oak (Quercus laurifolia)	Main leader broken off	Remove for construction	Y N			
207	9	Laurel oak (Quercus laurifolia)	Good condition, healthy	Preserve	Y		9	
208	6	Laurel oak (Quercus laurifolia)	Good condition, healthy	Remove for construction	Y	6		
209	13	Laurel oak (Quercus laurifolia)	Good condition, healthy but with significant lean	Remove for construction	Y	13		
210	10	Water oak (Quercus nigra)	Good condition, healthy. Not Native Canopy Tree	Remove for construction	N			

*Protected status modified by Nassau County

Total Inches	903	671	85
---------------------	-----	-----	----

Site Trees	Inches	Pct
Total Site Inches	1574	100%
Required Minimum Inches (45%)	708	45%
Preserved Inches	671	43%
Bonus Inches	85	5%
Total Preserved Inches	756	48%

Tree No. (See Plan)	Tree Size (Inches DBH)	Tree Set

OW Connelly & Wicker Inc.
 Planning • Engineering • Landscape Architecture
 10060 Summer Lake Drive, Suite 500 Jacksonville, Florida 32246
 (904) 256-3030 FAX: (904) 265-3031 www.owcwi.com
 Florida Registry 5650 L.A. Number: LC26000311

No.	Date	Revision	By

TREE EVALUATION AND MITIGATION TABLE

SUMMER BEACH PARCEL
 NASSAU COUNTY
 PREPARED FOR
FORUM CAPITAL PARTNERS

ALFRED B. PITTMAN, RLA
 LA-1601
 Reg. Landscape Architect

Project No.: 20-01-0014
 Designed: MEL Drawn: ANB
 Checked: RCW O.C.: RCW
 Date: MAY 26, 2020
 Scale:

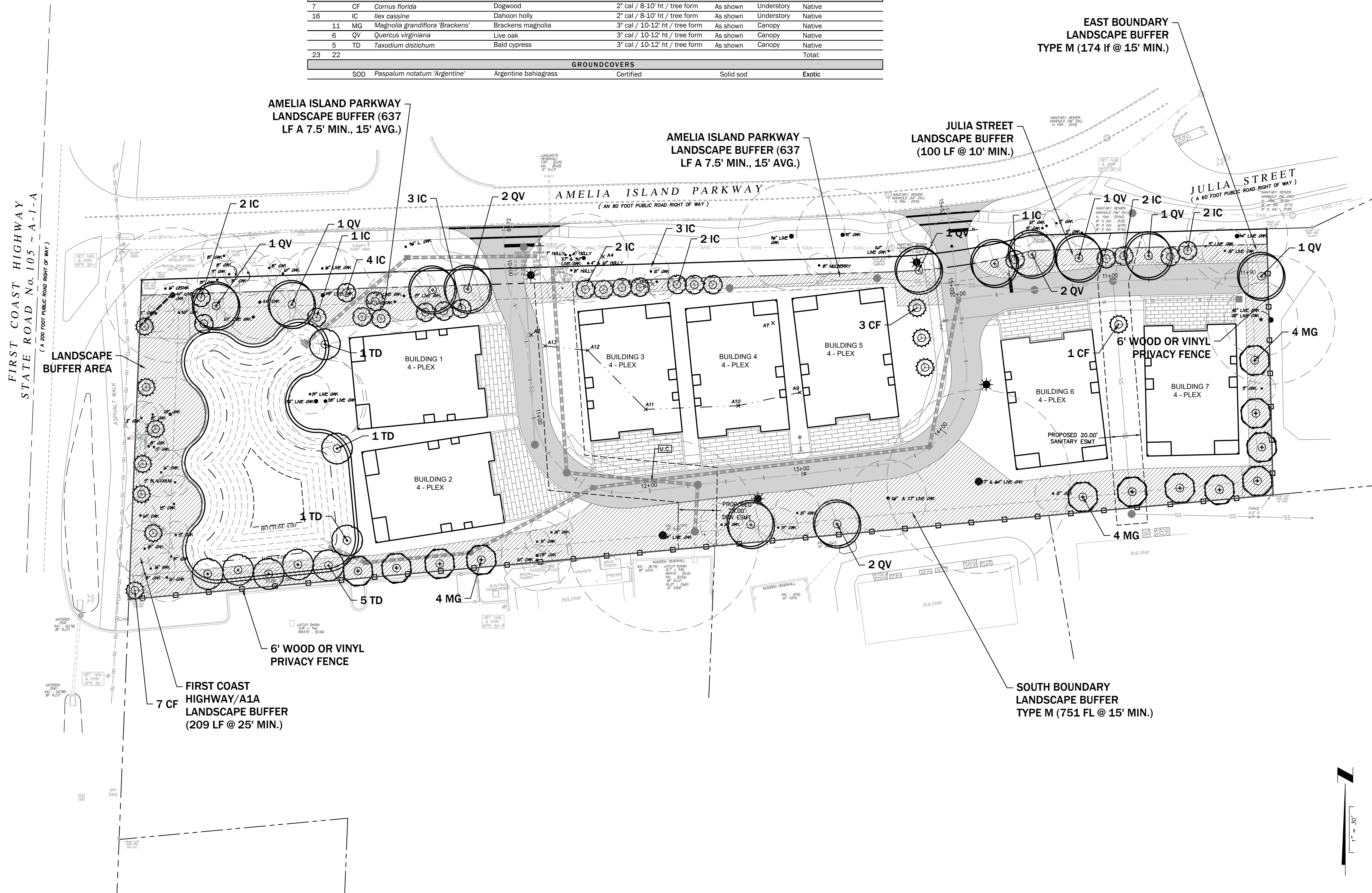
THIS DRAWING IS THE PROPERTY OF CONNELLY & WICKER INC. AND IS NOT TO BE REPRODUCED OR COPIED IN WHOLE OR IN PART. IT IS NOT TO BE USED ON ANY OTHER PROJECT AND IS TO BE RETURNED ON REQUEST.

Printed: Jun 05, 2020 - 3:27pm

J:\20\20-01-0014 Summer Beach Parcel Design\Drawings\20-01-0014 - FDP - Landscape & Mitigation.dwg

PLANT LIST

QTY	QTY	ABV	BOTANICAL NAME	COMMON NAME	SIZE / SPECS	SPACING	TYPE	ORIGIN
TREES								
7		CF	<i>Cornus florida</i>	Dogwood	2" cal / 8-10' ht / tree form	As shown	Understory	Native
16		IC	<i>Ilex cassine</i>	Dahoon holly	2" cal / 8-10' ht / tree form	As shown	Understory	Native
11		MG	<i>Magnolia grandiflora</i> 'Brackens'	Brackens magnolia	3" cal / 10-12' ht / tree form	As shown	Canopy	Native
6		QV	<i>Quercus virginiana</i>	Live oak	3" cal / 10-12' ht / tree form	As shown	Canopy	Native
5		TD	<i>Taxodium distichum</i>	Bald cypress	3" cal / 10-12' ht / tree form	As shown	Canopy	Native
23	22							Total:
GROUNDCOVERS								
		SOD	<i>Paspalum notatum</i> 'Argentine'	Argentine bahiagrass	Certified	Solid sod		Exotic



**EAST BOUNDARY
LANDSCAPE BUFFER
TYPE M (174 lf @ 15' MIN.)**

**JULIA STREET
LANDSCAPE BUFFER
(100 LF @ 10' MIN.)**

**AMELIA ISLAND PARKWAY
LANDSCAPE BUFFER (637
LF A 7.5' MIN., 15' AVG.)**

**AMELIA ISLAND PARKWAY
LANDSCAPE BUFFER (637
LF A 7.5' MIN., 15' AVG.)**

**FIRST COAST
HIGHWAY/A1A
LANDSCAPE BUFFER
(209 LF @ 25' MIN.)**

**SOUTH BOUNDARY
LANDSCAPE BUFFER
TYPE M (751 FL @ 15' MIN.)**

Connelly & Wicker Inc.
 Planning · Engineering · Landscape Architecture
 10060 Skimmer Lake Drive, Suite 500 Jacksonville, Florida 32246
 (904) 256-3030 FAX: (904) 265-3031 www.cwinc.com
 Florida Registry 5650 L.A. Number: LC26000311

No.	Date	Revision

LANDSCAPE PLAN

**SUMMER BEACH
PARCEL
NASSAU COUNTY
PREPARED FOR
FORUM CAPITAL PARTNERS**

ALFRED B. PITTMAN, RLA
 LA-1601
 Reg. Landscape Architect

Project No.: 20-01-0014	Designed: MEL	Drawn: ANB
Checked: RCW	O.C.:	RCW
Date: MAY 26, 2020	Scale: 1" = 30'	

THIS DRAWING IS THE PROPERTY OF CONNELLY & WICKER INC. AND IS NOT TO BE REPRODUCED OR COPIED IN WHOLE OR IN PART. IT IS NOT TO BE USED ON ANY OTHER PROJECT AND IS TO BE RETURNED ON REQUEST.

LANDSCAPE SPECIFICATIONS

GENERAL INSTALLATION INSTRUCTIONS

- Contractor shall furnish all labor, materials, and insurance to complete the work as shown in the plan.
- Contractor is responsible for acquiring all required permits and associated fees to complete the work.
- Contractor shall locate and visibly mark all buried utilities prior to construction and notify the landscape architect of any conflicts.
- Contractor shall demolish and remove from the premises all pavement, sod and other materials required to implement the plan.
- All work shall be completed in a timely manner and in accordance with standard industry practices.
- Contractor shall coordinate a work plan with the owner or agent and the landscape architect prior to starting work and shall comply with all state and federal requirements for work safety.
- Contractor shall coordinate an approved staging area with the owner prior to starting the work and shall maintain a clean and orderly site throughout the construction period and shall properly dispose of all trash and removed materials.
- Contractor shall proceed with approved work in an orderly and timely fashion.
- Contractor shall prevent offsite erosion, both by wind and rain, during construction using adequate means such as silt fencing, hay bales, and drain socks.
- Contractor shall provide all new materials in first quality condition.
- Substitutions shall be rejected unless approved by the landscape architect prior to installation.
- Contractor shall repair and/or replace at contractor's cost and in an expedient manner any utilities, pipes, conduit, cables, fences, pavement, plant material, or any other existing property within or abutting the project site damaged by contractor during the course of the project.
- Contractor shall notify the owner and landscape architect at least one week in advance for a substantial completion inspection. The landscape architect shall provide a punch list to the contractor outlining items to be completed by the contractor.
- Contractor shall complete punch list items in timely manner before calling for a final inspection by the owner and the landscape architect.
- Final payment for the work shall not be issued until a final inspection is completed and approved by the landscape architect and/or the owner.
- All work shall be warranted against defects and failure for at least 1 year following the final acceptance.
- Contractor shall clean site of all construction debris, materials, and trash. Disturbed areas shall be fine-graded and landscaped according to the plans, or sodded with variety specified in 17.1. Site must be clean and neat before a final acceptance and payment will be issued.

TREE AND EXISTING VEGETATION PROTECTION

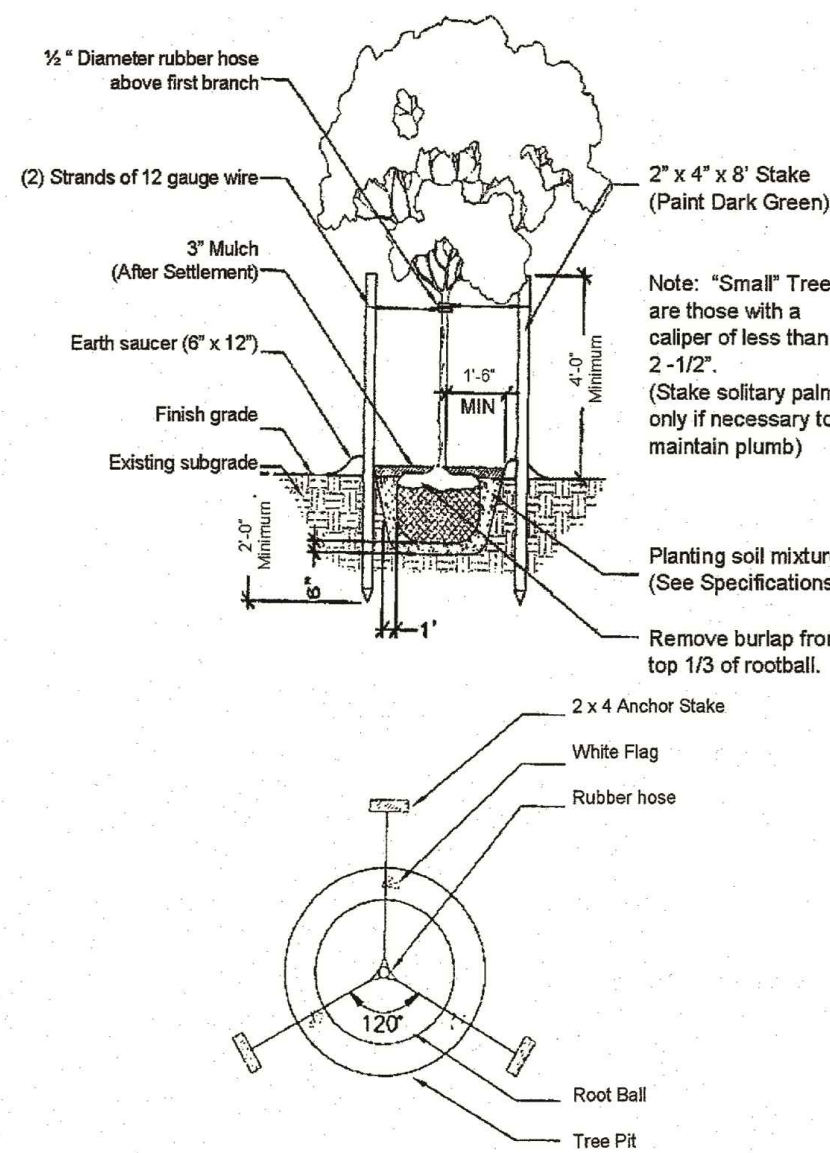
- Contractor shall ensure protection of existing trees and plants to be preserved within the project area and along the project boundaries prior to all clearing or construction activity using a tree barricade as specified in the plans, or if not specified in the plans, according to Florida Department of Transportation **Index Number 544 Landscape Installation** (<http://www.fdot.gov>). A silt fence may serve as a barricade where such measures are required and provide full protection of the critical protection zone as defined in index 544.
- Provide 4" pine bark compost mulch to uniformly cover all bare, cleared, eroded, or disturbed areas within each tree protection area. Keep mulch 12" away from base of each tree.
- Notify the landscape architect prior to any construction activity where protection cannot be provided or must be modified to due to conflicting construction activity.
- Notify the landscape architect prior to site clearing and construction of any trees or otherwise valuable plants not noted on the plans that may warrant protection, especially large trees located on adjacent properties whose roots and canopy occupy space within the project area.
- Tree barricade shall remain in place for the duration of the project until landscape installation commences whereupon the contractor may remove barricades as needed to prepare final grades and install landscaping according to the plans. Remaining tree barricades shall be removed at the completion of the project.

PLANT INSTALLATION

- Install all plants according to Florida Department of Transportation **Index Number 544 Landscape Installation** (<http://www.fdot.gov>).
- Do not install groundcovers or shrubs on top of or into the rootball of new trees.
- Contractor shall verify and determine all final quantities based on the plans prior to bidding and pricing. In the occurrence of a discrepancy between the plans and the plant list, the plans shall take precedence.
- All plants shall conform to the specifications on the plant list or plant schedule.
- All plants shall be Florida No. 1 Grade or better according to the Florida Grades and Standards Handbook.
- All plants shall be nursery-grown containerized or b&b stock.
- All plants shall be in good health, vigorous, evenly branched, and thickly foliated when in leaf. All plants shall be free of disease, insects, including eggs and larvae, as well as have a healthy, developed root system. They should also be free of physical damage or adverse conditions that would prevent thriving growth.
- Plant material, tree locations, and bed outlines shall be staked or flagged on site by the contractor and shall be adjusted as required to fit actual as-built conditions on site and approved by the owner or owner's representative prior to installation.
- Unless otherwise specified, all existing plant material within the areas of new construction as shown on the plans shall be removed and properly disposed of off of the project site. Plant material outside of these areas shall remain and shall be replaced with like kind if killed or damaged via landscape installation activities (see general installation instructions and tree and existing vegetation protection).
- Planting beds shall be shovel-cut to form a uniform, clean line between beds and lawn areas.
- Remove all synthetic material surrounding the rootball, including strapping, and remove all material including burlap and wire basket from top third of root ball prior to backfilling. Failure to take these measures will result in rejection of the installed tree.
- Shade trees shall be planted a minimum of 4 feet from any edge of pavement and 15 feet from overhead electric lines as measured from the at-grade centerline (refer to local provider to verify specific requirements).
- All plant material shall be warranted for a period of one year from the date of Final Acceptance of the work and not the date on which it was installed.
- Contractor shall provide all fine surface grading preparation for planting and shall maintain all finished grade requirements according to the plans, and ensure positive drainage. Report any drainage problems associated with finished grade or finished soil characteristics to the owner and the landscape architect.
- Coordinate construction of planting areas with installation of irrigation system or hose bibs as specified.
- Contractor shall provide mulch for all newly installed landscape areas. Provide a minimum 5' diameter mulch ring for all installed trees. Provide uniform coverage for all landscape beds at the specified depth maintain at least 6" clearance from all woody trunks and stems.
 - Mulch shall be pine bark @ $\frac{1}{4}$ " to 1" pieces.
 - Mulch shall be 4" uniform depth.
- Install sod or seed, as specified in the plans, according to the Florida Department of Transportation Standard Specification **Section 570 Performance Turf** (<http://www.fdot.gov>) unless otherwise stated herein.
- Contractor shall provide certified, healthy sod, free of weeds, disease, fungus, insects, or nematodes.
 - Sod shall be 18.1.2 below:
 - Celebration bermuda (*Cynodon dactylon* 'Celebration')
 - Argentine bahia (*Paspalum notatum* 'Argentine')
 - Palmetto St. Augustine (*Stenotaphrum secundatum* 'Palmetto')
 - Empire zoysia (*Zoysia japonica* 'Empire')
- Contractor shall provide plant maintenance during the construction period through Final Acceptance and the owner shall provide maintenance during the warranty period following Final Acceptance, unless otherwise specified in the contract documents.
- Contractor shall maintain all staking and guying materials and correct tree leaning or tilting during the warranty period. Contractor shall ensure that tree trunks and branches are not damaged or growth restricted by strapping or guying materials. Contractor shall be responsible for removal of all above-ground staking and guying material at the end of the warranty period.

SOILS

- Contractor shall minimize soil compaction to all new planting areas by limiting access to those areas designated for planting purposes only. Contractor shall not store, clean, or empty equipment or materials within any area specified for preservation or new plant installation.
- Prior to plant installation, contractor shall conduct a soil test in at least three locations on the site that best represent the plant distribution and conditions shown on the planting plan. The soil test shall be conducted by an independent laboratory qualified to test soils. The test shall be conducted to determine:
 - Soil type
 - Soil pH
 - Nutrient content
 - Recommended amendments
- Contractor shall furnish a copy of the soil report(s) along with the contractor's recommended amendments to the landscape architect and the owner prior to initiating plant installation. Contractor shall not initiate plant installation without a written or verbal response from the landscape architect or owner indicating receipt of the report and agreement with the amendment approach.
- At a minimum, contractor shall provide 5-8 percent organic pine bark compost uniformly throughout the planting soils prior to plant installation. Do not apply synthetic fertilizer to any planting area without the approval of the landscape architect or owner.



NASSAU COUNTY TREE PLANTING DETAIL

NASSAU COUNTY CODE REQUIREMENTS

DEVELOPMENT TYPE: Multi-family

PROTECTED TREE PRESERVATION/REPLACEMENT
See Tree Mitigation Plans

MINIMUM TREE PLANTING REQUIREMENTS
In addition to perimeter/buffer requirements
Dwelling Units (DU): 14
Required trees (1 tree per 2 DU): 7
Provided trees: 7

PERIMETER LANDSCAPING ADJACENT TO PUBLIC R.O.W.
A1A/SR 200 R.O.W. (209 lf)
Required canopy trees (3 per 100 lf): 7
Provided canopy trees: 18 existing preserved >8" DBH:
Trees 1, 2, 3, 4, 5, 6, 7, 8, 14, 15, 16, 17, 18, 19, 20, 21, 22, 24
Required understorey trees (3 per 100 lf): 7
Provided understorey trees: 7
Required area (25 sf avg): 5,225 sf
Provided area: 7,227 sf

Amelia Island Parkway R.O.W. (584 lf)
Road Type: Collector
Required canopy trees (3 per 100 lf): 18
Provided canopy trees: 18 (7 new, 11 existing preserved >8" DBH:
Trees 21, 22, 24, 32, 33, 188, 47, 48, 49, 110-111, 112)
Required understorey trees (3 per 100 lf): 18
Provided understorey trees: 18 (18 new)
Required area (15 sf/lf): 8,760 sf
Provided area: 8,874 sf

Julia Street R.O.W. (154 lf)
Road Type: Local
Required canopy trees (2 per 100 lf): 4
Provided canopy trees: 4 (2 new, 2 existing preserved >8" DBH:
Trees 207, 205)
Required understorey trees (3 per 100 lf): 4
Provided understorey trees: 4 (3 new)
Required area (10 sf/lf): 1,540 sf
Provided area: 1,830 sf

DEVELOPMENT BUFFERS PER TABLE 37-5

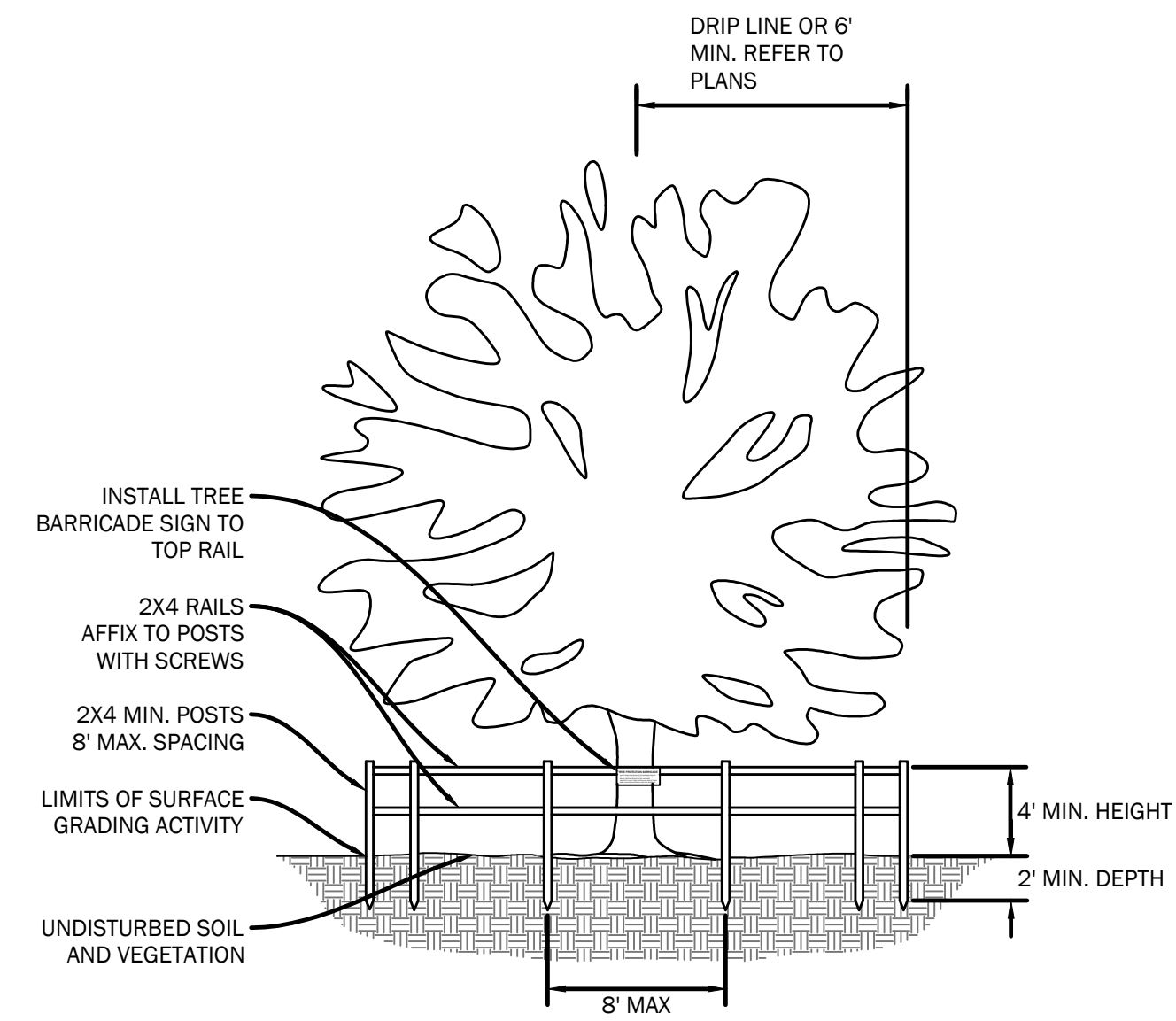
South Boundary (751 lf)
Zoning Designation: Neighborhood Commercial/Commercial
Buffer Type: M
Required canopy trees (4/100 lf): 30
Provided canopy trees: 30 (15 new, 15 existing preserved >8" DBH:
Trees 1, 2, 5, 54, 55, 56, 57, 94, 126, 127, 128, 129-130, 190-191, 175)
Required area (15 sf/lf): 11,265 sf
Provided area: 18,507 sf
Required screening provided by 6' opaque vinyl fence along boundary in lieu of shrubs.

East Boundary (164 lf)
Zoning Designation: Neighborhood Commercial/Commercial
Buffer Type: M
Required canopy trees (4/100 lf): 7
Provided canopy trees: 7 (5 new, 2 existing preserved >8" DBH:
Trees 192, 201)
Required area (15 sf/lf): 2,460 sf
Provided area: 2,494 sf
Required screening provided by 6' opaque vinyl fence along boundary in lieu of shrubs.

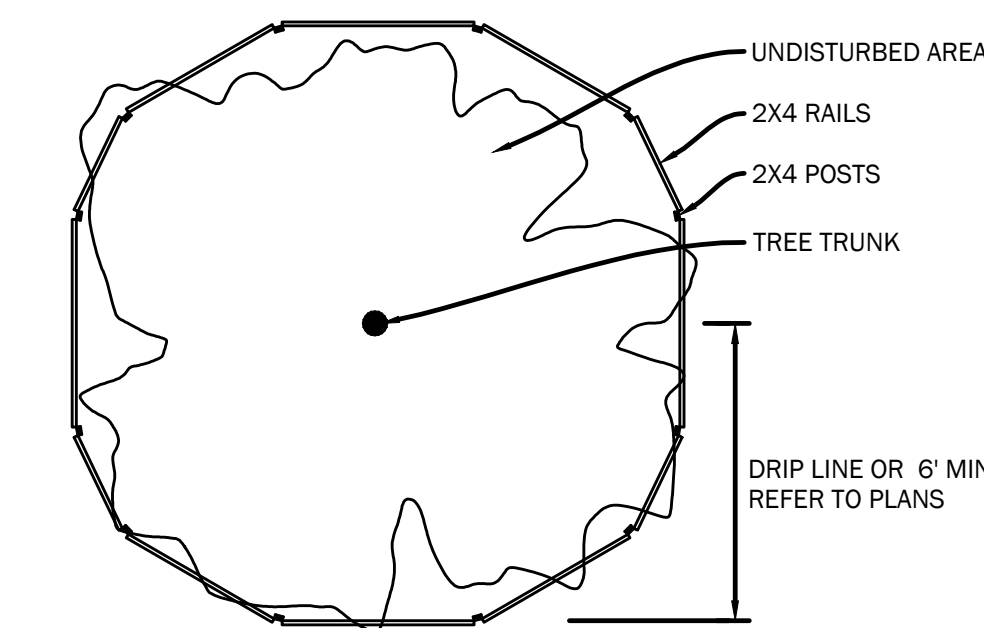
INTERIOR LANDSCAPING
Not required: no public offstreet parking is proposed

UPLAND BUFFERS

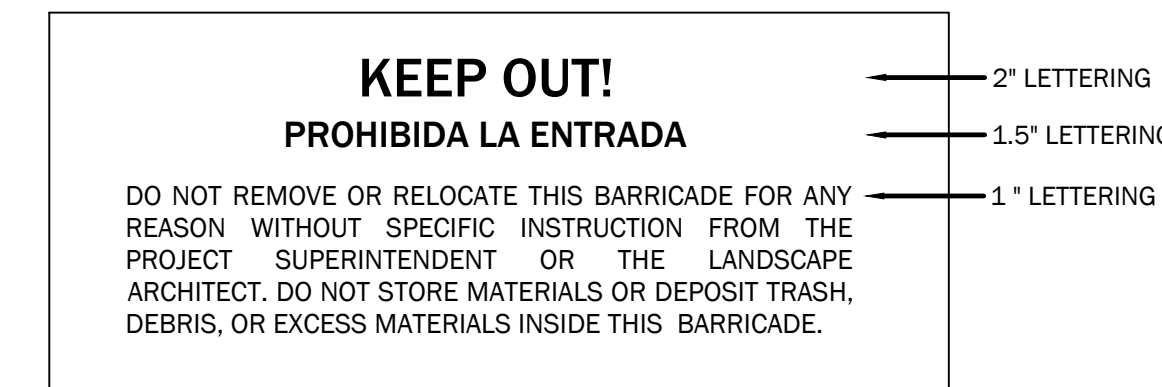
Upland buffers shall be maintained in their natural vegetated condition. Native vegetation removed or destroyed within the upland buffer in violation of Nassau County Comprehensive Plan Policy 1.04a.02 shall be restored. These areas shall be replanted with comparable native vegetative species as were removed or destroyed. Noxious and non-native invasive plant materials can be removed. Dead vegetation can be removed. Limbing can occur with the buffers, provided that the limbs to be removed are less than three (3) inches in diameter.



ELEVATION NTS



PLAN NTS



BARRICADE SIGN

TREE PROTECTION BARRICADE

- Note 1: Install tree barricades as shown on the tree protection, demolition, or site clearing plans.
- Note 2: Where field modifications are required to facilitate construction, install tree barricades at the drip line (the perimeter of the overhead tree canopy). At a minimum, tree barricaded must be at least 6' from tree trunks and must enclose at least 50% of the area within the drip line.
- Note 3: Tree roots extend up to three times the distance from trunk to drip line. Therefore, tree barricade layout plans may be irregularly shaped to protect as much of the existing root system as possible.
- Note 4: Silt fences for erosion control and that define limits of disturbance may serve as tree protection in lieu of this barricade provided the provisions of Note 2 are met.
- Note 5: Install barricades prior to site clearing activities and do not remove until installation of landscape plans. Maintain fence in sound, vertical condition and keep area inside barricades free from all construction activity, storage, materials, and debris.
- Note 6: Install one or more tree protection signs to each erected barricade. Print on durable, weatherproof material using the indicated language and affix to top rail with nails or screws so that signs are visible to primary use areas. Replace damaged or removed signs.



No.	Date	Revision