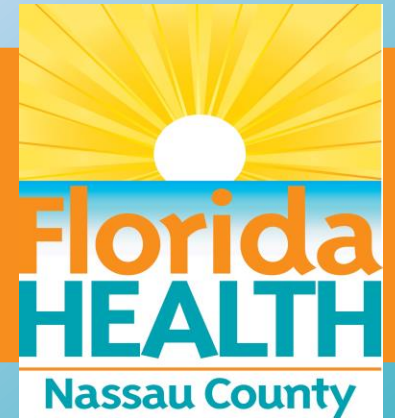


Nassau County COVID19 Vaccination Community Nassau BOCC Update



January 4, 2021

Florida Department of Health
Nassau County Health Department

Overview

Review of HHS OWS Framework/FDOH COVID-19 Vaccination Plan
Current Vaccine Status

Priority Groups in Phase 1:

- Residents and Staff of Long-Term Care Facilities

- Hospital (including pre-hospital EMS) & Direct Care HCWs

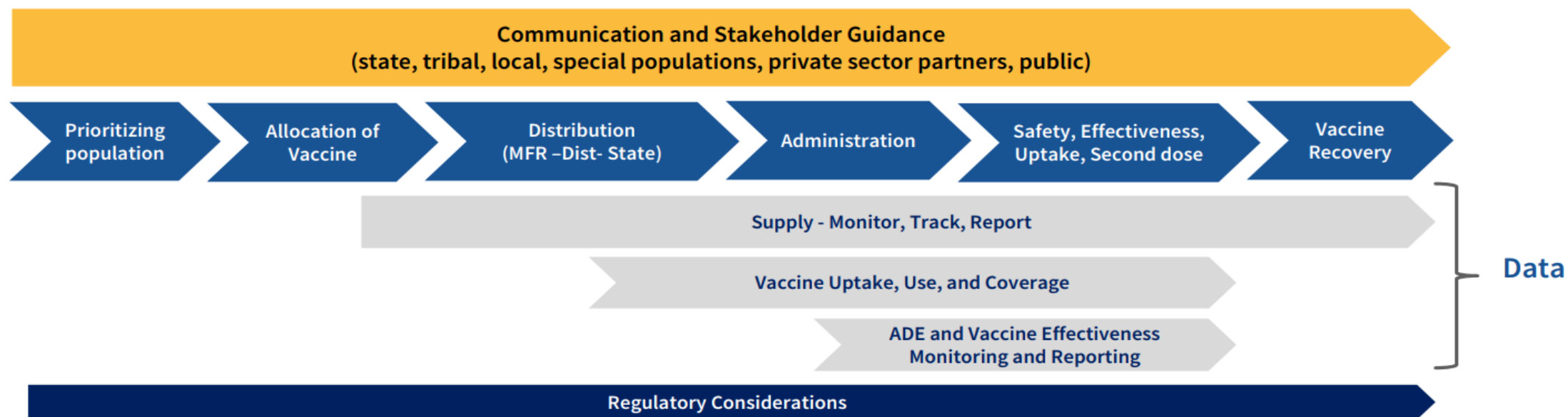
- Older Adults - 65 and over

Access Strategies - CHD Vaccine Clinics, Closed PODs (MOA), Other

Local Nassau Issues & Planning Considerations - Discussion/Q&A

HHS Operation Warp Speed

MULTIPLE CRITICAL COMPONENTS TO VACCINE IMPLEMENTATION



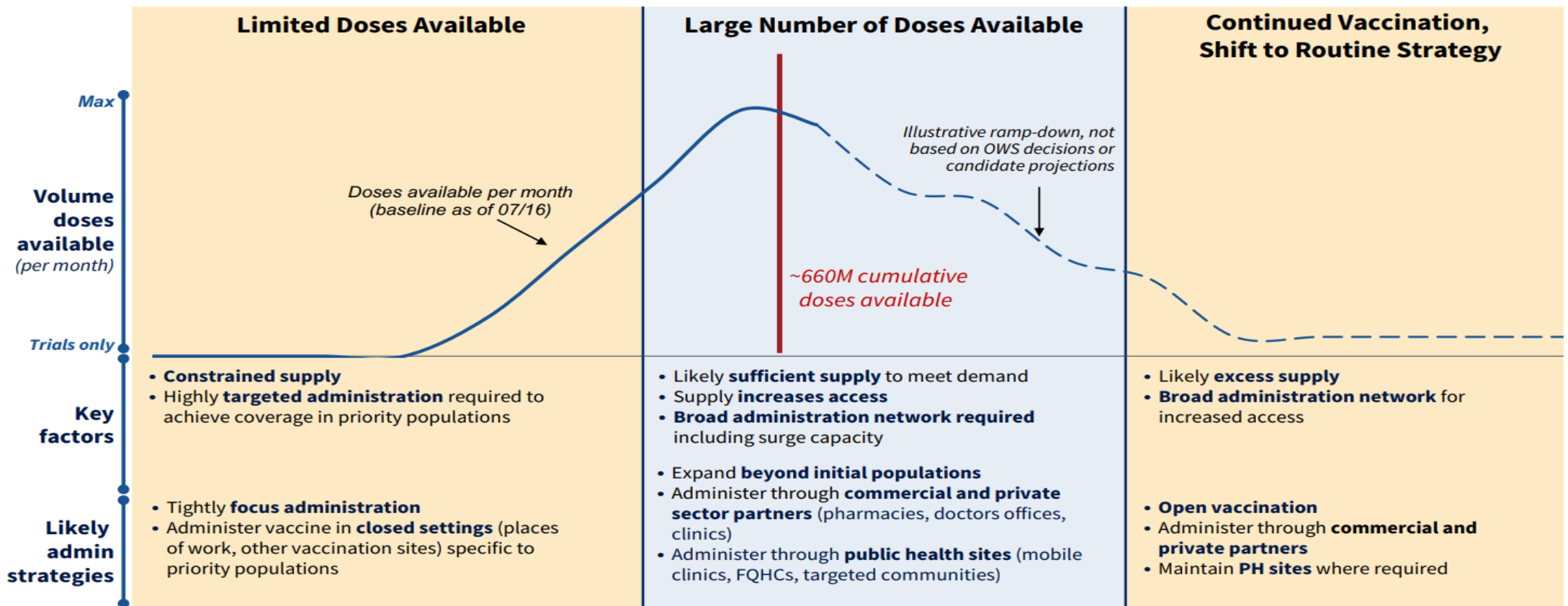
Public health impact relies on rapid, efficient, and high uptake of complete vaccine series, with focus on high-risk groups



Phased Deployment – Supply Driven

Illustrative scenario for planning purposes; will be adapted based on the clinical / manufacturing information on all OWS candidates and vaccine prioritization

Distribution will adjust as volume of vaccine doses increases, moving from targeted to broader populations reached (phased approach)



FDOH State Vaccination Plan

- Plan available at:

http://ww11.doh.state.fl.us/comm/_partners/covid19_report_archive/vaccination-plan/vaccination_plan_latest.pdf

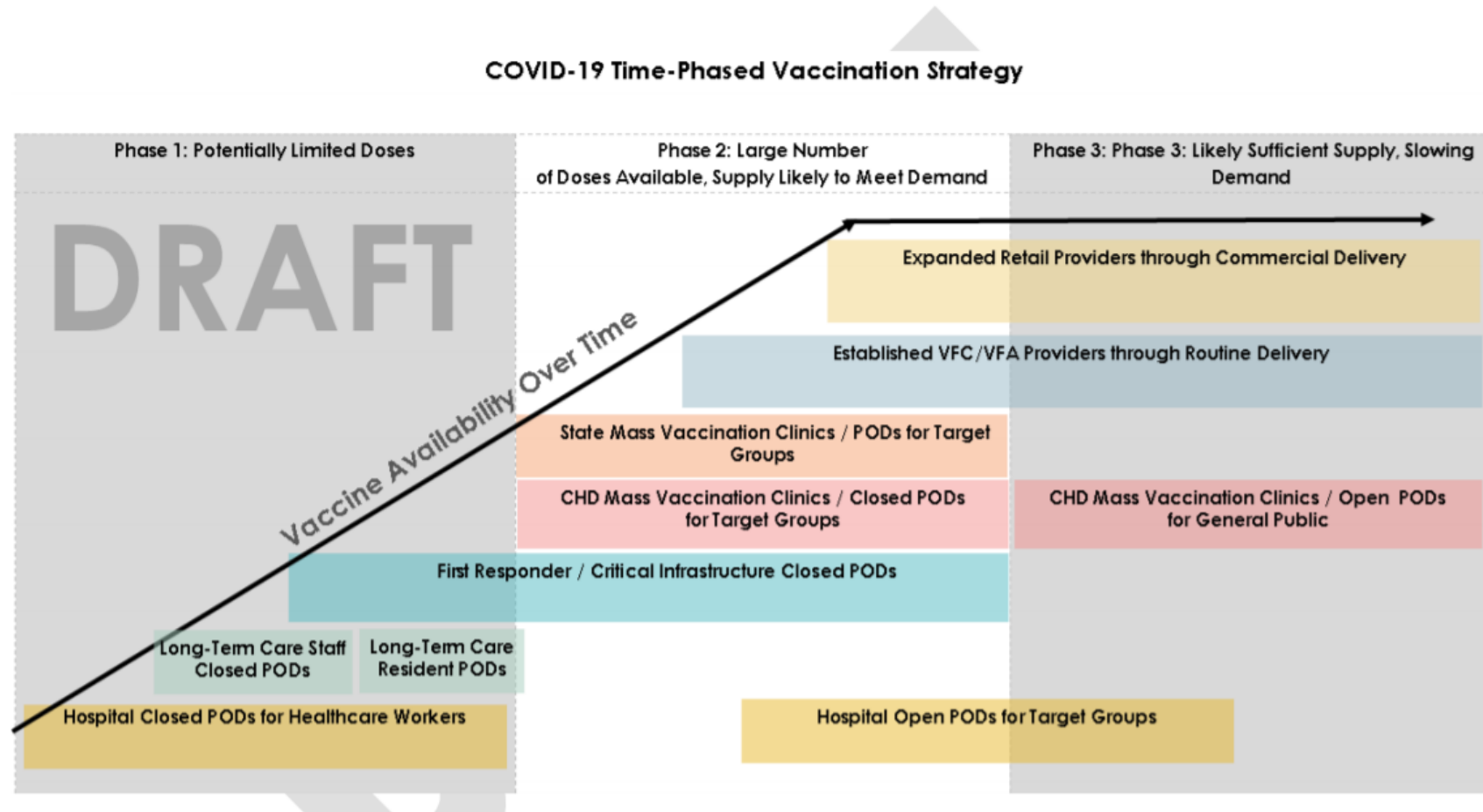
- Phases & General Target Groups

PHASE	GENERAL TARGET GROUPS
Phase 1 A	Health workers and first responders
Phase 1 B	People with high risk health conditions & congregate settings
Phase 2	Workers in critical positions & people with underlying conditions
Phase 3	Workers in general settings, children and young adults
Phase 4	Everyone who did not have access during previous phases

- FDOH COVID-19 Vaccination Planning Workgroup (11.09.20) released Planning Template for Organization of Vaccine Delivery follows CDC Vaccination Playbook with Key Points and Assumptions, Organization-Specific Planning Worksheet
- Guidance for Organizations to enroll as Vaccine Providers

Florida Plan

Figure 2. COVID-19 Time-Phased Vaccination Strategy



CDC Communication Strategy



Vaccinate with **Confidence**

CDC's strategic framework for strengthening vaccine confidence and preventing outbreaks of vaccine preventable diseases.

Protect communities

Strategy: Protect communities at risk from under-vaccination

- ✓ Leverage immunization data to find and respond to communities at risk
- ✓ Work with trusted local partners to reach at-risk communities before outbreaks
- ✓ Ensure vaccines are available, affordable, and easy-to-get in every community

Empower families

Strategy: Get providers and parents effective information resources

- ✓ Expand resources for health care professionals to help them have effective vaccine conversations with parents
- ✓ Work with partners to start conversations before the first vaccine appointment
- ✓ Help providers foster a culture of immunization in their practices

Stop myths

Strategy: Stop misinformation from eroding public trust in vaccines

- ✓ Work with local partners and trusted messengers to improve confidence in vaccines among key, at-risk groups
- ✓ Establish partnerships to contain the spread of misinformation
- ✓ Educate key new stakeholders (e.g., state policy makers) about vaccines

Phase 1 Priority Groups – EO 20-315

- Long Term Care Residents and Staff
- Hospital (& Pre-Hospital EMS), Community Based HCWs who provide direct care
- Older Adults 65 and over
- Estimate of Demand:

Estimated Nassau Resident Population = **88,200**

22.8% of Nassau Residents are 65 or over = **19,500** individuals over 65 (not including visitors)

According to FDOH MQA there are currently **4600** Licensed Health Care Providers living in Nassau County

Current Vaccine Status

- Vaccine Types - Pfizer & Moderna (mRNA vaccines) under EUA. Must be used within hours of opening the multi-dose vial.
- Lead Partners for Phase 1 - Hospitals (with and without ultracold storage capabilities), Pharmacy Chains (CVS, Walgreens) to conduct on-site Long Term Care staff and resident vaccination clinics (Closed PODS).
- FDOH Nassau CHD Moderna Vaccine push allocation - first delivery 12.28.2020 - only enough for 6% of Phase 1 eligible.

Strategies

Planning Considerations - (1) Demand will continue to exceed Supply for weeks to months more, (2) Vaccine supply will vary from week to week based on Manufacturer/Federal/State allocations, and (3) Provision of the 2nd Dose will require more vaccination times/access points compared to initial 1st Dose access.

- Points of Distribution (PODS) Types:

- FDOH Health Department Clinic

- Community Based Vaccination Clinics

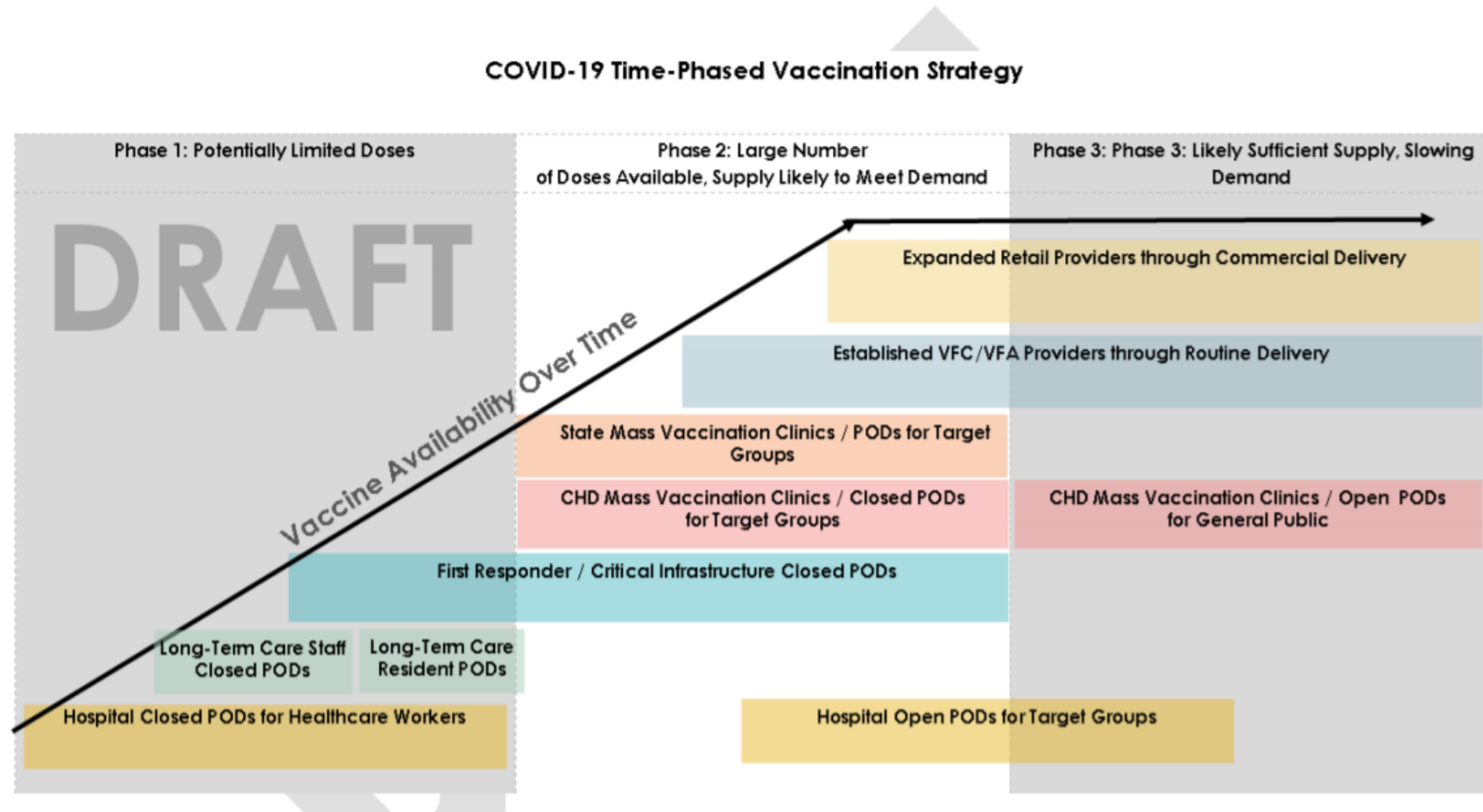
- Special (Closed) supported by Community Partners

- Public (Open) supported by volunteers, external groups

- * Future Options - Pharmacy, Hospitals & Private Healthcare Providers

Florida Plan

Figure 2. COVID-19 Time-Phased Vaccination Strategy



Promoting Efficiency & Equity

EFFICIENCY - 95% of Households have computers & routinely use on-line access to other services. Maximize use of technology to provide information and access to vaccination services.

Leveraging Web-Based System vs. Traditional Phone-Based system

On-line vaccine reservation through OneNassau/Eventbrite plus
EOC Phone Bank Staff assistance to schedule Health Department
Vaccine Clinic appointment

EQUITY - Assuring other options for those that lack Internet or smartphone access, have limited comfort/skills or just prefer personal interaction/assistance.

Meeting Needs of Older Adults

In addition to being the largest segment in the current Phase 1 priority group, Older adults accept and participate more in vaccination programs. High demand in the context of limited supply.

Older adults are at high risk for complications of COVID19 - some more than others: age, co-morbid conditions, multi-generational or crowded housing, living with or being an essential worker with public contact.

Older adults have more disabilities and may need additional assistance in accessing vaccine.

Multi-prong approach with variety of strategies & partners will be used.

Discussion/Q & A



- Our Mission is to protect, promote & improve the health of all people in Florida through integrated state, county & community efforts.
- FDOH Nassau County Health Department
(904) 875-6100 www.Nassau.floridahealth.gov