

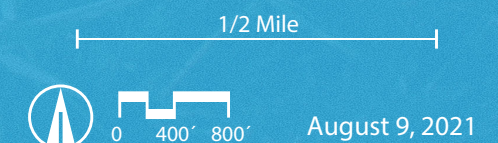
Tributary

Exhibit "B" Preliminary Development Plan

LEGEND	
	Pedestrian System
	Roadway
	Three Rivers Boundary
	Conceptual Access
	Right In/Right Out
	Conceptual Pedestrian Access Subject to Army Corps of Engineers and SJRWMD Approval

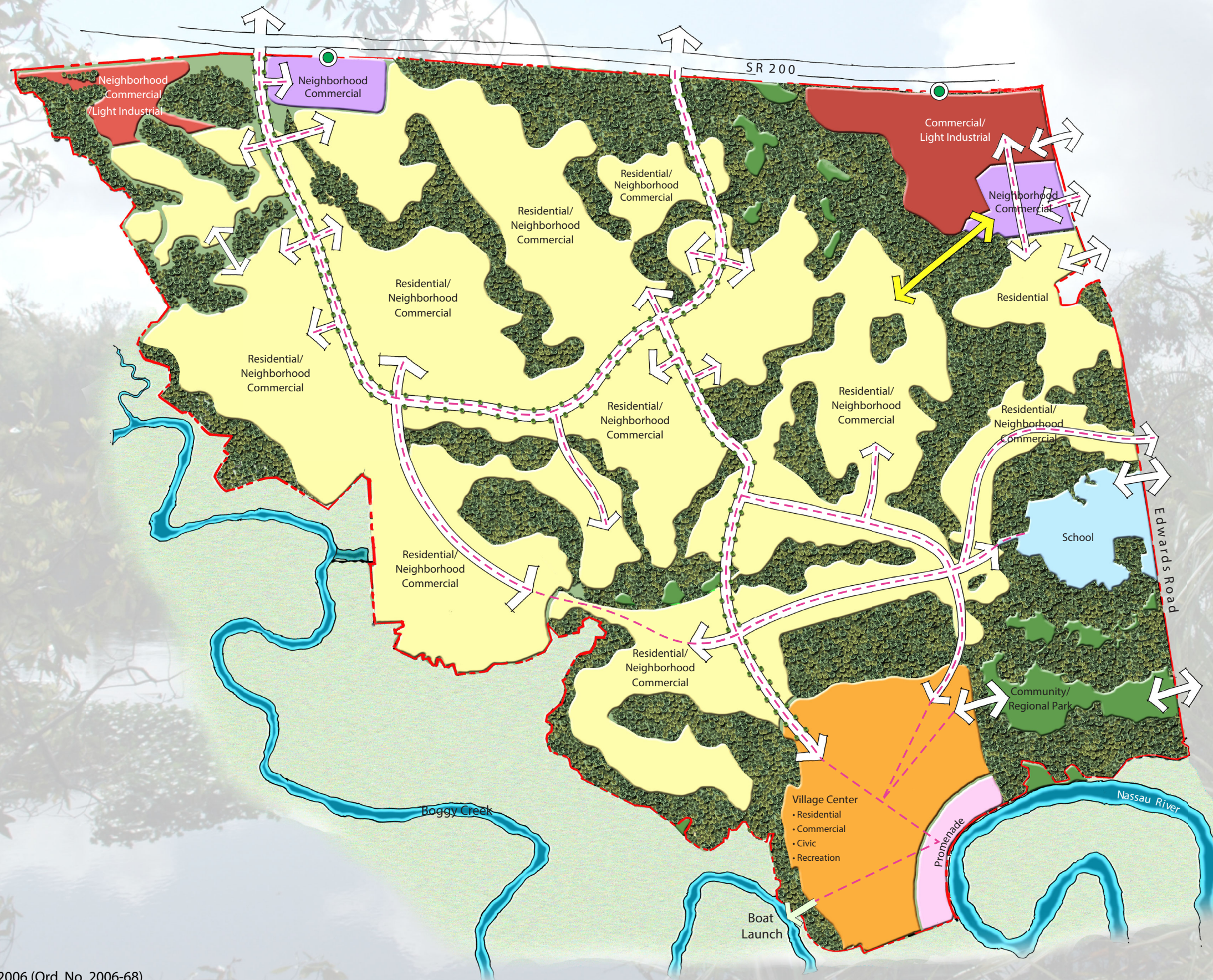
Notes:

- (1) Pedestrian connections from east to west of property shall be provided.
- (2) Roadway circulation and parcel configuration are subject to change based on final wetland and other surveys, permitting, and final site engineering.
- (3) Roadway and associated wetland impacts are not depicted on this map.



PROSSER
Creative Visionaries. Engineering Minds®

120095.01



April 27, 2006 (Ord. No. 2006-68)
Revised August 16, 2018 (Ord. No. 2019-03)