

1 BUILDING TYPE B - FIRST FLOOR PLAN (2 BUILDINGS ON SITE)  
SCALE: 1/8" = 1'-0"

REVISIONS	
DESIGN SET	12-13-22

**SLOCUM PLATTS**  
ARCHITECTS, P.A.

RANDALL J. SLOCUM AR 13350 WILLIAM P. PLATTS AR 13242  
 670 NORTH ORLANDO AVENUE, SUITE 1001 MAITLAND, FL 32751  
 TEL. (407)645-3019 FAX (407)645-2771  
 WWW.SLOCUMPLATTS.COM

**BUILDING TYPE B - FIRST FLOOR PLAN**  
**MILLS CREEK PRESERVE**  
**APARTMENTS - PHASE II**  
FLORIDA  
YULEE

DRAWN	UTB
CHECKED	WFP
DATE	12-13-22
SCALE	AS NOTED
JOB NO.	22-058
SHEET	A2.1a

RESERVED FOR DIGITAL SIGNATURE

ANY REPRODUCTION, REVISIONS OR MODIFICATIONS OF THESE DOCUMENTS WITHOUT THE EXPRESS WRITTEN CONSENT OF SLOCUM PLATTS ARCHITECTS P.A. IS PROHIBITED BY LAW. THE DESIGN IN THESE DRAWINGS ARE THE SOLE PROPERTY OF SLOCUM PLATTS ARCHITECTS P.A. THE COMPANY EXPRESSLY RESERVES ALL COPYRIGHT AND ALL OTHER PROPERTY RIGHTS IN THESE PLANS AND ELEVATIONS.

REVISIONS  
DESIGN SET  
12-13-22

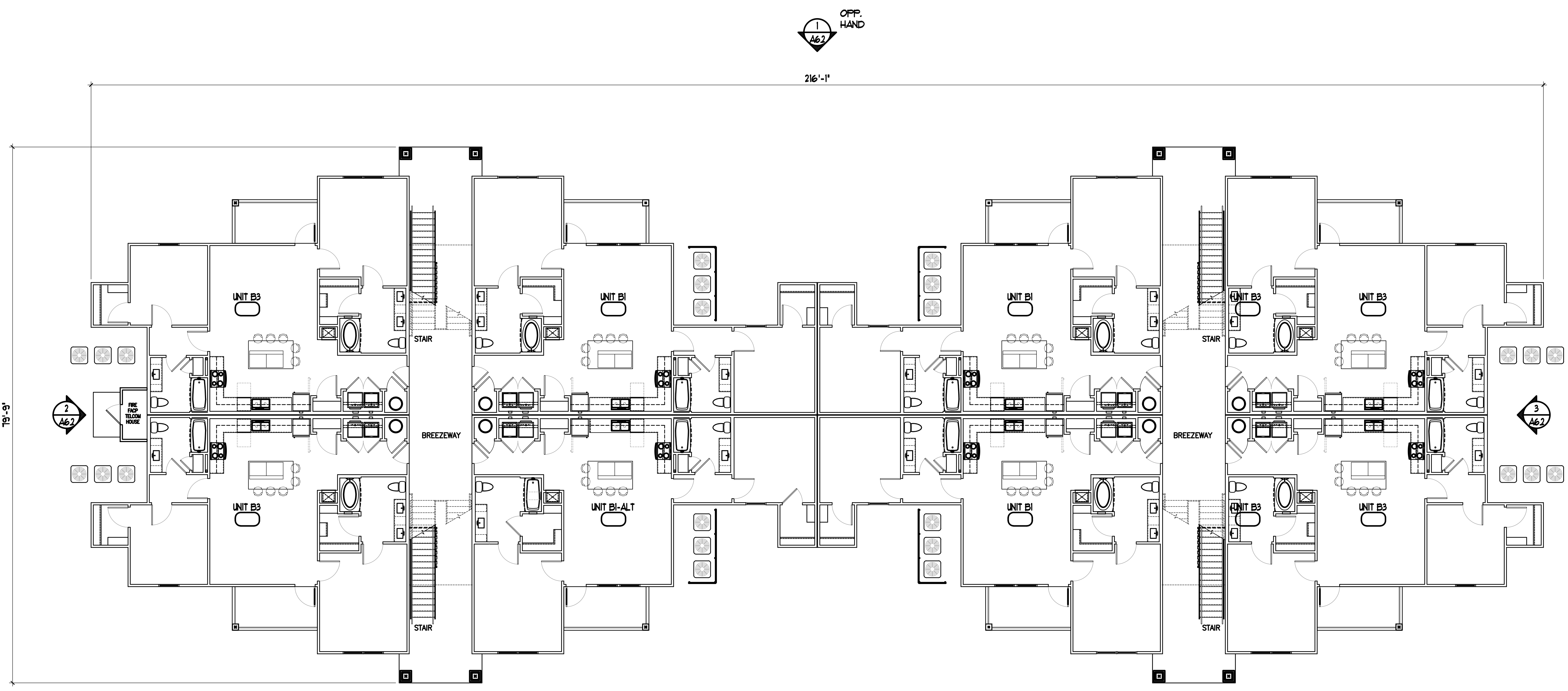
**SLOCUM PLATTS ARCHITECTS, P.A.**  
 RANDALL J. SLOCUM AR 13350 WILLIAM P. PLATTS AR 13242  
 670 NORTH ORLANDO AVENUE, SUITE 1001 MAITLAND, FL 32751  
 TEL. (407)645-3019 FAX (407)645-2771  
 WWW.SLOCUMPLATTS.COM



**BUILDING TYPE D - FIRST FLOOR PLAN**  
**MILLS CREEK PRESERVE APARTMENTS - PHASE II**  
 FLORIDA  
 YULEE

DRAWN  
UTB  
 CHECKED  
WJFP  
 DATE  
12-13-22  
 SCALE  
AS NOTED  
 JOB NO.  
22-058  
 SHEET  
**A2.2a**

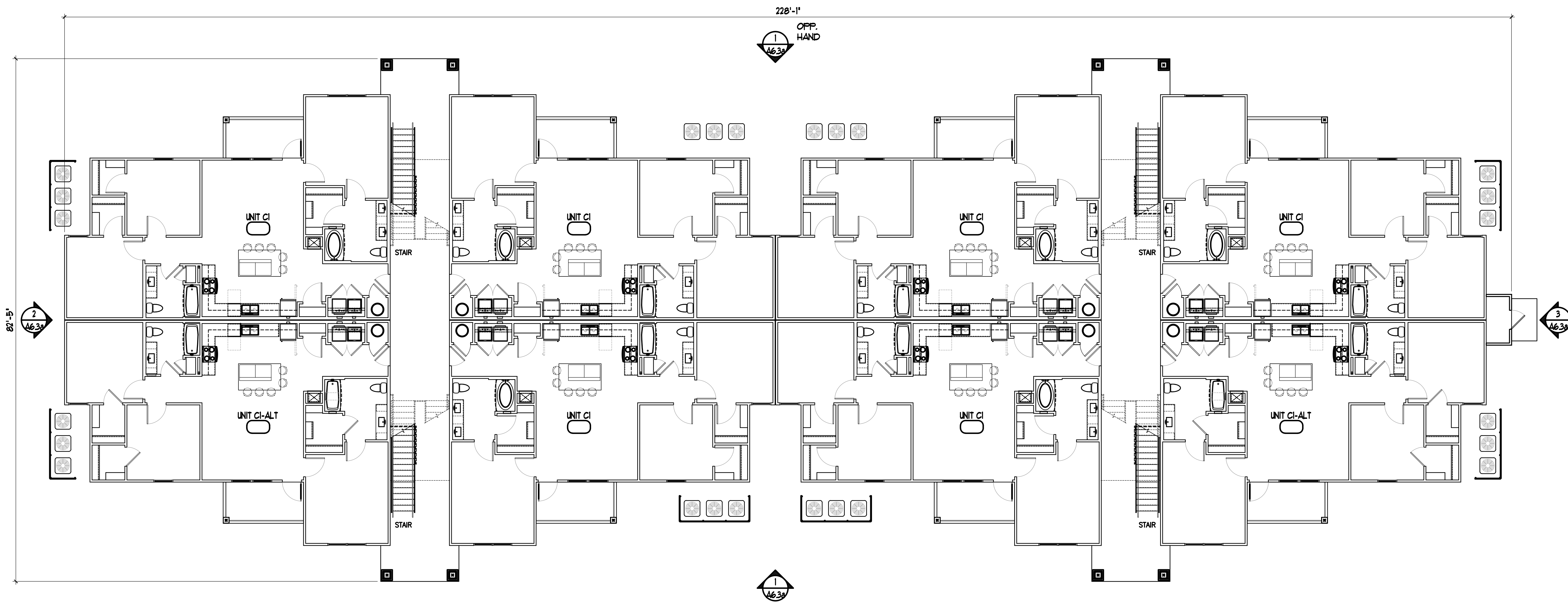
ANY REPRODUCTION, IN WHOLE OR IN PART, OF THESE DOCUMENTS WITHOUT THE EXPRESS WRITTEN CONSENT OF SLOCUM PLATTS ARCHITECTS, P.A. IS PROHIBITED BY LAW. THE DESIGN AND DRAWINGS IN THESE DRAWINGS ARE THE SOLE PROPERTY OF SLOCUM PLATTS ARCHITECTS, P.A. THE COPYRIGHT AND ALL OTHER PROPERTY RIGHTS IN THESE PLANS AND ELEVATIONS ARE RESERVED BY SLOCUM PLATTS ARCHITECTS, P.A.



**1 BUILDING TYPE D - FIRST FLOOR PLAN (1 BUILDING ON SITE)**  
 SCALE: 1/8" = 1'-0"

RESERVED FOR DIGITAL SIGNATURE





1 BUILDING TYPE F - FIRST FLOOR PLAN (1 BUILDING ON SITE)  
SCALE: 1/8" = 1'-0"

RESERVED FOR DIGITAL SIGNATURE


REVISIONS	
DESIGN SET	12-13-22

**SLOCUM PLATTS**  
ARCHITECTS, P.A.



RANDALL J. SLOCUM AR 13350 WILLIAM P. PLATTS AR 13242  
670 NORTH ORLANDO AVENUE, SUITE 1001 MAITLAND, FL 32751  
TEL. (407) 645-3019 FAX (407) 645-2771  
WWW.SLOCUMPLATTS.COM

**BUILDING TYPE F - FIRST FLOOR PLAN**  
**MILLS CREEK PRESERVE**  
**APARTMENTS - PHASE II**  
FLORIDA  
YULEE

DRAWN  
UTB  
CHECKED  
WFP  
DATE  
12-13-22  
SCALE  
AS NOTED  
JOB NO.  
22-058  
SHEET  
**A2.3a**

ANY REPRODUCTION, IN WHOLE OR IN PART, OR MODIFICATION OF THESE DOCUMENTS WITHOUT THE EXPRESS WRITTEN CONSENT OF SLOCUM PLATTS ARCHITECTS P.A. IS PROHIBITED BY LAW. THE DESIGN AND THESE DRAWINGS ARE THE EXCLUSIVE PROPERTY OF SLOCUM PLATTS ARCHITECTS P.A. THE COPYRIGHT AND ALL OTHER PROPERTY RIGHTS IN THESE PLANS AND ELEVATIONS.

REVISIONS	
DESIGN SET	12-13-22



1 BUILDING TYPE B - FRONT ELEVATION (REAR ELEV. SIMILAR)  
SCALE: 1/8" = 1'-0"



2 BUILDING TYPE B - LEFT ELEVATION  
SCALE: 1/8" = 1'-0"



3 BUILDING TYPE B - RIGHT ELEVATION  
SCALE: 1/8" = 1'-0"

RESERVED FOR DIGITAL SIGNATURE

ANY REPRODUCTION, IN WHOLE OR IN PART, OF THESE DOCUMENTS WITHOUT THE EXPRESSED WRITTEN CONSENT OF SLOCUM PLATTS ARCHITECTS, P.A. IS PROHIBITED BY LAW. THE DESIGN AND THESE DRAWINGS ARE THE SOLE PROPERTY OF SLOCUM PLATTS ARCHITECTS, P.A. THE COMPANY EXPRESSLY RESERVES ALL RIGHTS IN THESE PLANS AND ELEVATIONS.

**SLOCUM PLATTS ARCHITECTS, P.A.**  
 RANDALL J. SLOCUM AR 13350 WILLIAM P. PLATTS AR 13242  
 670 NORTH ORLANDO AVENUE, SUITE 1001 MAITLAND, FL 32751  
 TEL. (407)645-3019 FAX (407)645-2771  
 WWW.SLOCUMPLATTS.COM

**BUILDING TYPE B EXTERIOR ELEVATIONS**  
**MILLS CREEK PRESERVE APARTMENTS - PHASE II**  
 FLORIDA  
 YULEE

DRAWN	UTB
CHECKED	WFP
DATE	12-13-22
SCALE	AS NOTED
JOB NO.	22-058
SHEET	A6.1

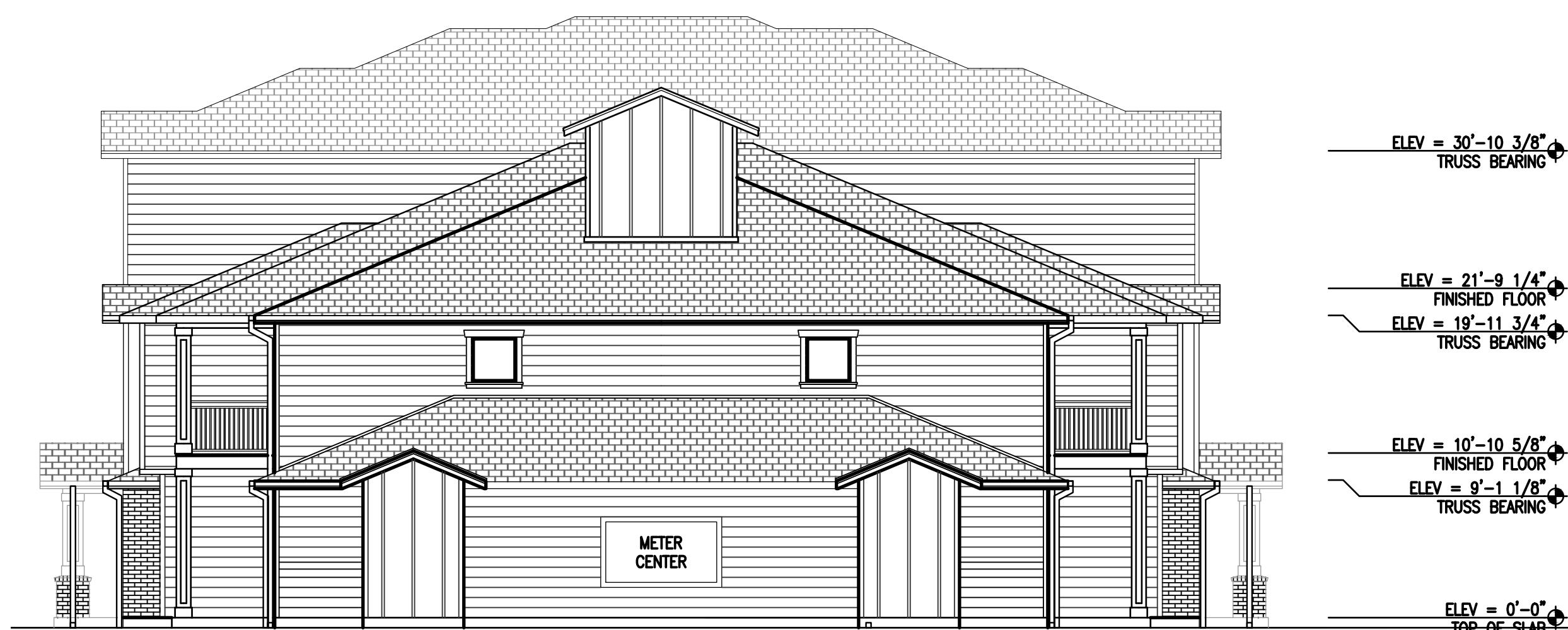
REVISIONS  
DESIGN SET  
12-13-22



1 BUILDING TYPE D - FRONT ELEVATION (REAR ELEV. SIMILAR)  
SCALE: 1/8" = 1'-0"



2 BUILDING TYPE D - LEFT ELEVATION  
SCALE: 1/8" = 1'-0"



3 BUILDING TYPE D - RIGHT ELEVATION  
SCALE: 1/8" = 1'-0"

SLOCUM PLATTS  
ARCHITECTS, P.A.  
RANDALL J. SLOCUM AR 13350 WILLIAM P. PLATTS AR 13242  
670 NORTH ORLANDO AVENUE, SUITE 1001 MAITLAND, FL 32751  
TEL. (407)645-3019 FAX (407)645-2771  
WWW.SLOCUMPLATTS.COM

BUILDING TYPE D EXTERIOR ELEVATIONS  
MILLS CREEK PRESERVE  
APARTMENTS - PHASE II  
YULEE FLORIDA

RESERVED FOR DIGITAL SIGNATURE

DRAWN  
UTB  
CHECKED  
WFP  
DATE  
12-13-22  
SCALE  
AS NOTED  
JOB NO.  
22-058  
SHEET

A6.2

ANY REPRODUCTION, REVISION OR MODIFICATION OF THESE DOCUMENTS WITHOUT THE EXPRESSED WRITTEN CONSENT OF SLOCUM PLATTS ARCHITECTS, P.A. IS PROHIBITED BY LAW. THE DESIGN AND DRAWINGS IN THESE DRAWINGS ARE THE SOLE PROPERTY OF SLOCUM PLATTS ARCHITECTS, P.A. THE COMPANY EXPRESSLY RESERVES ALL RIGHTS IN THESE PLANS AND ELEVATIONS.

REVISIONS  
DESIGN SET  
12-13-22



1 BUILDING TYPE F - FRONT ELEVATION (REAR ELEV. SIMILAR) - OPTION 1  
SCALE: 1/8" = 1'-0"



2 BUILDING TYPE F - LEFT ELEVATION - OPTION 1  
SCALE: 1/8" = 1'-0"



3 BUILDING TYPE F - RIGHT ELEVATION - OPTION 1  
SCALE: 1/8" = 1'-0"

RESERVED FOR DIGITAL SIGNATURE

DRAWN	UTB
CHECKED	WFP
DATE	12-13-22
SCALE	AS NOTED
JOB NO.	22-058
SHEET	

**SLOCUM PLATTS ARCHITECTS, P.A.**  
RANDALL J. SLOCUM AR 13350 WILLIAM P. PLATTS AR 13242  
670 NORTH ORLANDO AVENUE, SUITE 1001 MAITLAND, FL 32751  
TEL. (407)645-3019 FAX (407)645-2771  
WWW.SLOCUMPLATTS.COM

**BUILDING TYPE F EXTERIOR ELEVATIONS - OPTION 1**  
**MILLS CREEK PRESERVE APARTMENTS - PHASE II**  
YULEE FLORIDA

**A6.3a**