

**GENERAL ELECTRICAL NOTES:**

- CONTRACTOR SHALL VERIFY EXISTING JOB SITE CONDITIONS DURING THE BIDDING PERIOD TO OBTAIN THE SCOPE OF ELECTRICAL WORK INVOLVED AS A RESULT OF ARCHITECTURAL MODIFICATIONS TO THE EXISTING STRUCTURE. THE SCOPE OF WORK SHALL INCLUDE MATERIALS AND OUTLETS CONSISTING OF FIXTURES, DEVICES, EQUIPMENT OR APPARATUS WHICH MUST BE ROUTED, RELOCATED, OR REMOVED EITHER TEMPORARILY OR PERMANENTLY, OR WHICH MUST BE PROVIDED SO THAT THE INDICATED REMODELING MAY BE ACCOMPLISHED.
- RE-ESTABLISH SERVICE TO ALL OUTLETS THAT MAY BE INTERRUPTED BECAUSE OF REMODELING WORK.
- PROVIDE ALL APPURTENANCES REQUIRED TO REROUTE, RELOCATE, REMOVE, OR REINSTALL ALL ITEMS DESCRIBED IN THESE NOTES.
- RETAIN ALL MATERIALS BEING REMOVED AND NOTIFY BUILDING MANAGER FOR DIRECTION AS TO MATERIALS TO BE SAVED OR DISCARDED. DELIVER THOSE MATERIALS TO BE SAVED TO THE LOCATION ON THE PREMISES AS DIRECTED BY THE BUILDING MANAGER.
- REFER TO ARCHITECTURAL/INTERIOR DRAWINGS FOR EXACT LOCATIONS OF LIGHTING FIXTURES AND OUTLETS. ALL WALL POWER AND TELEPHONE OUTLETS SHALL BE MOUNTED AT 18" A.F.F. TO CENTER AND ALL LIGHT AND DIMMER SWITCHES SHALL BE MOUNTED AT 48" A.F.F. TO CENTER, EXCEPT WHERE SPECIFICALLY INDICATED OTHERWISE ON THE PLANS. DIMENSIONS NOTED ON ARCHITECTURAL/INTERIOR DESIGNER'S DRAWINGS SHALL PREVAIL.
- NEW EXIT LIGHT FIXTURES SHALL MATCH EXISTING EXIT LIGHT FIXTURE IN SAME AREA.
- CONTRACTOR SHALL PROVIDE, INSTALL AND CONNECT NEW BATTERY BACK-UP (MINIMUM 1100 LUMEN) IN EXISTING RELOCATED LIGHT FIXTURES FOR EMERGENCY LIGHTING, MINIMUM 1.5 HR. OF BACK-UP. (TYPICAL FOR ALL NON-GENERATOR BACK-UP SYSTEMS.)
- CONTRACTOR MAY COMBINE WIRES IN ONE CONDUIT FOR CONVENIENCE OR INSTALLATION, PROVIDED ALL THE REQUIREMENTS OF THE N.E.C. ARE OBSERVED.
- ALL ELECTRICAL EQUIPMENT IS SHOWN DIAGRAMMATICALLY. EXACT LOCATIONS ARE TO BE DETERMINED IN THE FIELD AVOIDING INTERFERENCES.
- THE INSTALLATION SHALL COMPLY WITH SPECIFICATIONS AND ALL REQUIREMENTS OF THE LATEST EDITION OF THE N.E.C., OSHA, STATE AND LOCAL CODES.
- FLORIDA BUILDING CODE 2020, 7TH EDITION  
FLORIDA FIRE PREVENTION CODE 2020, 7TH EDITION  
NFPA 70 NATIONAL ELECTRIC CODE 2017  
NFPA 72 NATIONAL FIRE ALARM CODE 2016  
NFPA 101 LIFE SAFETY CODE 2018
- ALL WIRE SHALL BE COPPER. ALL WIRE, CONDUIT AND BREAKERS SHALL BE #12 COPPER WIRE (THHN OR THWN), 1/2" CONDUIT AND 20 AMP SINGLE POLE BREAKERS UNLESS OTHERWISE NOTED. (TYPICAL)
- WHEN BRANCH CIRCUIT LENGTH EXCEEDS 75 FEET FROM PANEL, WIRING SHALL BE INCREASED TO #10 AWG WITH #10 AWG GROUND. WHEN BRANCH CIRCUIT LENGTH EXCEEDS 150 FEET FROM PANEL, BRANCH WIRING SHALL BE INCREASED TO #8 AWG WITH #8 AWG GROUND.
- PROVIDE #6 COPPER GROUND TO TELEPHONE BACKBOARD.
- PROVIDE GROUND CONDUCTOR IN ALL RACEWAYS.
- CONTRACTOR SHALL UPDATE PANEL DIRECTORY AS PER WIRING IN FIELD.
- CONTRACTOR SHALL USE EXISTING SPARE

BREAKERS/BLANKS IN PANEL(S) AND CIRCUITS MADE AVAILABLE THROUGH DEMOLITION PRIOR TO ADDING NEW PANEL(S). VERIFY IN FIELD.

17. THE INSTALLATION OF WIRING, RACEWAY AND DEVICES FOR THE FIRE ALARM SHALL BE IN ACCORDANCE WITH ALL APPLICABLE CITY CODES, NFPA CODES AND UNIFORM RULE 4A-48, RULES AND REGULATIONS OF THE STATE FIRE MARSHAL'S OFFICE F.S. 633.01 AND 633.701.

18. THE FIRE ALARM CONTRACTOR SHALL PERFORM A SITE VISIT PRIOR TO BID TO VERIFY ENOUGH POWER EXISTS TO OPERATE ALL NEW AND EXISTING FIRE ALARM DEVICES. INCLUDE AN EXPANDER PANEL IF REQUIRED.

19. ALL CIRCUIT BREAKERS FOR MECHANICAL EQUIPMENT SHALL BE HACR RATED.

20. ALL NEW BREAKERS ADDED TO EXISTING PANELS SHALL HAVE SAME A.I.C. RATING AS EXISTING BREAKERS UNLESS NOTED OTHERWISE.

21. VOLTAGE DROP HAS BEEN CALCULATED IN COMPLIANCE WITH FBC ENERGY CONSERVATION C405.8.3 AND NEC 210.19(A)(1)FPN4. VOLTAGE DROP IN COMBINED CONDUCTORS TO BE MAXIMUM OF 5% AT DESIGN LOAD.

22. FIRE ALARM PERMIT DRAWINGS SHALL BE PREPARED AND SUBMITTED BY THE FIRE ALARM SYSTEM CONTRACTOR.

23. ANY NEW FIRE ALARM VISUAL DEVICES SHALL HAVE A CANDELA RATING OF 75 UNLESS NOTED OTHERWISE. ANY NEW FIRE ALARM AUDIO DEVICE SHALL HAVE A MINIMUM 85 DECIBEL OUTPUT. ANY NEW FIRE ALARM SPEAKER DEVICE SHALL BE 0.5 WATT UNLESS NOTED OTHERWISE.

24. LIGHT FIXTURE SUPPORTED BY CEILING GRID SHALL BE SUPPORTED AS PER FIELD TECHNICAL INFORMATION #40. LIGHT FIXTURE WEIGHING LESS THAN 10 LBS SHALL HAVE (1) 12 GA HANGWIRE CONNECTED FROM THE FIXTURE TO THE STRUCTURE ABOVE. LIGHT FIXTURES WEIGHING MORE THAN 10 LBS SHALL HAVE (2) 12 GA WIRES ATTACHED AT OPPOSING CORNERS OF THE LIGHT FIXTURE TO THE STRUCTURE ABOVE.

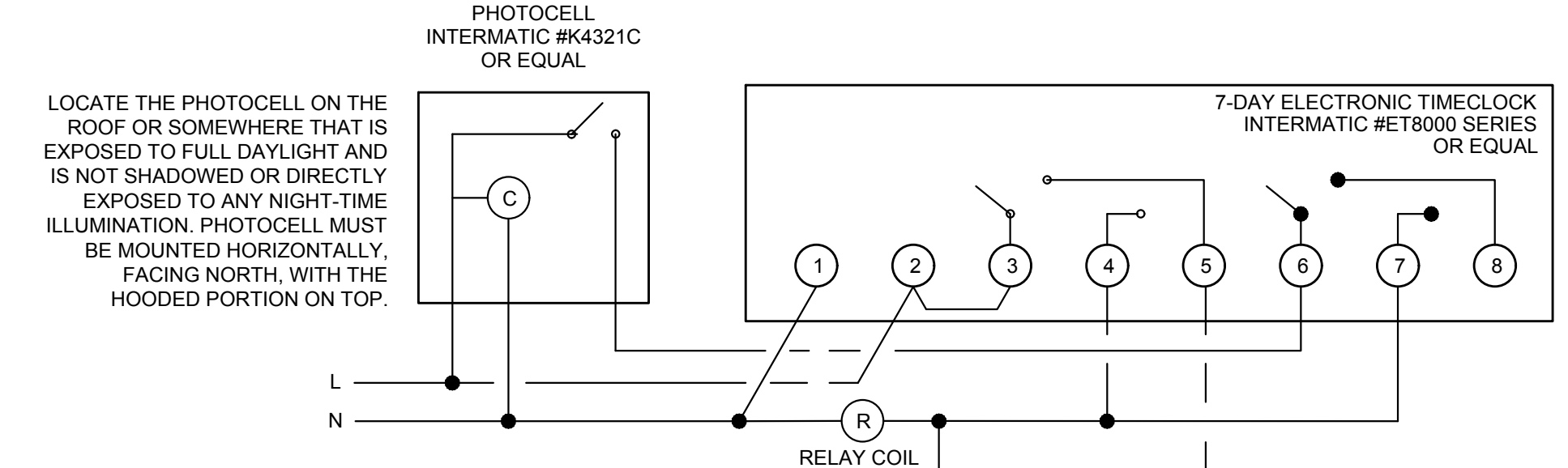
25. MINIMUM EMERGENCY ILLUMINATION SHALL BE PROVIDED FOR A PERIOD OF 1 1/2 HOURS IN THE EVENT OF FAILURE OF NORMAL LIGHTING, WITHIN THE WORK AREAS. EMERGENCY LIGHTING FACILITIES SHALL BE ARRANGED TO PROVIDE INITIAL ILLUMINATION THAT IS AT LEAST AN AVERAGE OF 1 FOOTCANDLE MEASURED ALONG THE PATH OF EGRESS AT FLOOR LEVEL. FBC 2020 1008, EXISTING FBC 2020 805.7.

26. BREAKERS FOR ALL MULTIPLE CIRCUIT HOMERUNS WHICH SHARE A COMMON NEUTRAL SHALL BE CONNECTED WITH BREAKER TIES.

27. TO THE BEST OF THE ENGINEER'S KNOWLEDGE, THE PLANS AND SPECIFICATIONS COMPLY WITH THE APPLICABLE MINIMUM BUILDING CODES AND THE APPLICABLE FIRE SAFETY STANDARDS AS DETERMINED BY THE LOCAL AUTHORITY IN ACCORDANCE WITH SECTION AND CHAPTER 633, FLORIDA STATUTES. FBC 110.8.4.4 2020.

28. ALL ELECTRICAL BOXES INSTALLED IN A FIRE RATED WALL SHALL BE SEPARATED BY A MINIMUM OF 24" OR BE PROTECTED BY LISTED PUTTY PADS. ALL LISTED ELECTRICAL BOXES INSTALLED IN A FIRE RATED WALL SHALL BE SEPARATED BY LISTING DISTANCE OF THE BOX OR BE PROTECTED BY LISTED PUTTY PADS. ELECTRICAL BOXES SHALL COMPLY WITH ALL CRITERIA SET FORTH IN FBC 714.3.2.

29. GC SHALL PROVIDE CONTACTOR FOR ALL POWERED ITEMS UNDER A COMMERCIAL KITCHEN HOOD TO SHUT POWER BY HOOD ANSUL SYSTEM.



**BASIS OF DESIGN NOTES:**  
SITE LIGHTING CONTROL BASIS OF DESIGN IS TO PROVIDE HOUSE PANELS AT NEARBY BUILDINGS AND POWER NEAREST SITE LIGHTING FIXTURES FROM THEM. EACH HOUSE PANEL WILL BE PROVIDED WITH A 24/7 TIME-CLOCK AS SHOWN ON DIAGRAM TO THE RIGHT OF THIS NOTE.  
POLE SHALL BE ROUTED WITH UNDERGROUND 1" CONDUIT FOR INTERCONNECTION AND MINIMUM WIRING REQUIREMENTS OF #10 CU. FINAL WIRING METHOD TO BE SHOWN ON ELECTRICAL PLANS AT BUILDING PERMIT DRAWINGS.

**TIMECLOCK CONTROL  
NTS**

**SPECIAL SITE LIGHTING NOTES:**

- J-BOXES ABOVE CEILING SHALL BE LABELED WITH A CIRCUIT NUMBER AND PANEL DESIGNATION.
- CONTRACTOR SHALL PROVIDE 1" CONDUIT FOR FUTURE ALL SITE LIGHTING FIXTURE POWER.
- ALL ELECTRICAL DISCONNECTS INSTALLED OUTDOORS SHALL BE GALVANIZED METAL DISCONNECTS, NEMA 3R.
- GENERAL CONTRACTOR AND ALL SUB CONTRACTORS OR INSTALLERS SHALL REVIEW BOTH ARCHITECTURAL AND ALL MEP DRAWINGS AND SCHEDULES PRIOR TO BID, PROCUREMENT OR COMMENCING ANY WORK. ANY DISCREPANCIES BETWEEN THE DRAWINGS FOR FIXTURE TYPE, FINISH, QUANTITY, SIZE, LOCATION, TYPE OF INSTALLATION, ACCESSORIES, ETC. SHALL BE IMMEDIATELY BROUGHT TO THE ATTENTION OF THE ARCHITECT IN WRITING. WITHOUT FORMAL AUTHORIZATION, THE ARCHITECT AND OWNER RESERVE THE RIGHT TO REQUIRE THE MORE RESTRICTIVE SPECIFICATION.
- PRIOR TO CREATING ANY PENETRATIONS OF THE CONCRETE FLOOR SLAB, SUCH AS CORE DRILLING, DRILLING OR SAWCUTTING, THE G.C. SHALL LOCATE ALL EXISTING SLAB REINFORCEMENT USING X-RAY. THE G.C. SHALL RELOCATE THE SLAB PENETRATION AS NECESSARY TO AVOID CUTTING ANY SLAB REINFORCEMENT. IF RELOCATION OF A FLOOR PENETRATION IS REQUIRED, CONSULT WITH THE OWNER OR ARCHITECT FOR APPROVAL OF THE PROPOSED NEW LOCATION PRIOR TO PROCEEDING.

**GENERAL POWER NOTES:**

- ALL SITE LIGHTING FIXTURES SHALL BE CONTROLLED BY TIME-CLOCK AND PHOTOCELL SYSTEM. REFER TO DIAGRAM ON THIS SHEET FOR MORE INFORMATION. SYSTEM INFORMATION AND SPECIFICATIONS WILL BE PROVIDED ON THE ELECTRICAL DESIGN STAGE.
- ALL DEVICES ARE NEW UNLESS OTHERWISE NOTED

**ELECTRICAL SYMBOLS LEGEND**

SYMBOLS	LEGEND	SYMBOLS	LEGEND
(L)	LIGHTING FIXTURE	(T)	TRANSFORMER - AS NOTED
(W)	WALLWASHER LIGHT FIXTURE	(C)	WALL COMMUNICATION OUTLET. PROVIDE MIN. 1" CONDUIT WITH PULL WIRES TO ABOVE CEILING.(TELE/DATA/CABLE TV)
(FL)	FLUORESCENT LIGHTING FIXTURE	(FDB)	FLOOR TELE/DATA BOX
(FS)	FLUORESCENT STRIP LIGHTING FIXTURE	(FJ)	FIREMANS PHONE JACK
(E)	EXIT SIGN FIXTURE - ARROWS AS INDICATED	(CR)	CARD READER
(EFC)	FIXTURES ON EMERGENCY CIRCUIT OR FURNISHED W/ BATTERY PACK	(PM)	PLUGMOLD
(RE)	REMOTE EMERGENCY LIGHT W/BATTERY PACK	(M)	MAGNETIC DOOR HOLDER (REF. HARDWARE SPECS)
(S)	S.P.S.T. TOGGLE SWITCH	(D)	FIRE ALARM SMOKE DETECTOR - CEILING/WALL MOUNTED
(S/S)	THREE-WAY TOGGLE SWITCH / FOUR-WAY TOGGLE SWITCH	(H)	FIRE ALARM HEAT DETECTOR
(S/P)	SWITCH WITH PILOT LIGHT	(F)	FIRE ALARM SIGNAL LIGHT, MTD. 82"A.F.F.
(S/D)	DIMMER SWITCH	(F)	FIRE ALARM SPRINKLER FLOW SWITCH
(D)	DUPLEX RECEPTACLE OUTLET	(V)	FIRE ALARM SPRINKLER VALVE TAMPER SWITCH
(DR)	DUPLEX RECEPTACLE OUTLET - MTD. ABOVE COUNTER	(D)	FIRE ALARM SMOKE DETECTOR - DUCT MOUNTED
(QR)	QUADRUPLEX RECEPTACLE OUTLET	(S)	FIRE ALARM SPEAKER, CLG. MTD.
(SR)	SINGLE RECEPTACLE OUTLET MTD. AS NOTED	(F/S)	FIRE ALARM COMBINATION AUDIO/VISUAL DEVICE WALL MTD. 82"A.F.F. "F" INDICATES HORN. "S" INDICATES SPEAKER
(FO)	FLOOR OUTLET WITH RECEPTACLE	(R)	"R" INDICATES RELAY. "C" INDICATES CONTROL
(D)	DEDICATED DUPLEX OUTLET	(R)	"DO NOT USE ELEVATOR" WARNING LIGHT(F.B. F.A. CONTRACTOR)
(SP)	SPECIAL PURPOSE OUTLET - AS NOTED	(SD)	MOTORIZED DAMPER
(J)	JUNCTION BOX - CEILING MOUNTED	(SD)	SMOKE DAMPER
(W)	JUNCTION BOX - WALL MOUNTED	(A)	ABANDONED
(F)	FLOOR JUNCTION BOX	(AFF)	ABOVE FINISHED FLOOR OR GRADE
(F)	FURNITURE SYSTEM POWER POLE	(CLG)	CEILING
(F)	FURNITURE SYSTEM WALL POWER FEED	(E)	EXISTING
(F)	FURNITURE SYSTEM WALL TELEDATA	(EDF)	ELECTRIC DRINKING FOUNTAIN
(D)	DISCONNECT SWITCH - 30A/3NF U.O.N.	(GFI)	GROUND FAULT INTERRUPTING
(T)	FUSED DISCONNECT SWITCH	(IG)	ISOLATED GROUND
(B)	ENCLOSED CIRCUIT BREAKER	(L)	LIGHTING
(P)	277/480 VOLT PANELBOARD	(NF)	NON-FUSED
(P)	120/208 VOLT PANELBOARD	(OC)	ON CENTER
(M)	MOTOR	(R)	RELOCATED
(C)	CONDUIT CONCEALED IN WALL OR OVERHEAD	(REC)	RECEPTACLE
(C)	CONDUIT CONCEALED IN FLOOR OR UNDERGROUND	(SPR)	SPARE
(C)	CONDUIT RUN EXPOSED	(UON)	UNLESS OTHERWISE NOTED
(C)	CONDUIT WHIP UNDER RAISED FLOOR	(WP)	INDICATES WEATHERPROOF DEVICE OR PLATE
(C)	TICK MARKS INDICATE #12 CONDUCTORS OR AS NOTED	(FACP)	FIRE ALARM CONTROL PANEL
(G)	GROUND CONNECTION AS NOTED	(FARA)	FIRE ALARM ANNUNCIATOR PANEL
(S)	CONDUIT STUB-UP LOCATION	(SLC)	SIGNALING LINE CIRCUIT
(S)	CONDUIT STUB-DOWN LOCATION	(NAC)	NOTIFICATION APPLIANCE CIRCUIT
(S)	SPECIAL PURPOSE CONDUIT SEE PLANS FOR NOTES	(K)	FIRE ALARM KNOX BOX
(S)	MOTOR STARTER - MANUAL	(S)	CEILING MOUNTED SPEAKER
(S)	MOTOR STARTER - MAGNETIC	(C)	CEILING MOUNTED DAYLIGHT SENSOR
(S)	CONTROLLED SPLIT WIRED RECEPTACLE		
(S)	CEILING 180 OR WALL MOUNTED 90 OCCUPANCY SENSOR		

NOTE: NOT ALL SYMBOLS ARE USED.

**Luminaire Schedule**

Symbol	Qty	Label	Arrangement	Description	LLF	Luminaire Lumens	Luminaire Watts	Total Watts	Mounting Height
(A3)	5	A3	Single	ASL2-320L-210-4K7-3-U	0.950	29489	210	1050	37
(A4)	3	A4	Single	ASL2-320L-210-4K7-4W-U	0.950	29140	210	630	37
(A5)	1	A5	Single	ASL2-320L-210-4K7-5QW-U	0.950	29896	210	210	37

**Calculation Summary**

Label	CalcType	Units	Avg	Max	Min	Avg/Min	Max/Min
Site Phase 2	Illuminance	Fc	0.67	4.7	0.0	N.A.	N.A.
Parking Lot	Illuminance	Fc	1.97	4.7	0.6	3.28	7.83

SLOCUM PLATTS ARCHITECTS, P.A.  
RANDALL J. SLOCUM AR 13350 WILLIAM P. PLATTS AR 13242  
670 NORTH ORLANDO AVENUE, SUITE 1001 MAITLAND, FL 32751  
TEL: (407)645-3019 FAX: (407)645-2771  
WWW.SLOCUMPLATTS.COM



C.O.A. #26759  
**GILSON ARGENTI**  
ENGINEERING  
200 E. ROBINSON STREET, STE. 970  
ORLANDO, FL 32801  
WORKWITHHW.COM  
813.856.3330

**SITE PLAN NOTES**  
**MILLS CREEK PRESERVE APARTMENTS - PHASE II**  
FLORIDA  
YULIE

DRAWN  
CHECKED  
DATE 12-13-22  
SCALE AS NOTED  
JOB NO. 22-058  
SHEET  
**ES001**

RESERVED FOR DIGITAL SIGNATURE  
THIS ITEM HAS BEEN ELECTRONICALLY SIGNED AND SEALED BY JOSE L. DOMINGUEZ OROZCO, PE ON THE DATE AND/OR TIME STAMP SHOWN USING A DIGITAL SIGNATURE. PRINTED COPIES OF THIS DOCUMENT ARE NOT CONSIDERED SIGNED AND SEALED AND THE SIGNATURE MUST BE VERIFIED ON ANY ELECTRONIC COPIES.  
JOSE L. DOMINGUEZ OROZCO, PE  
No. 91269  
STATE OF FLORIDA  
PROFESSIONAL ENGINEER

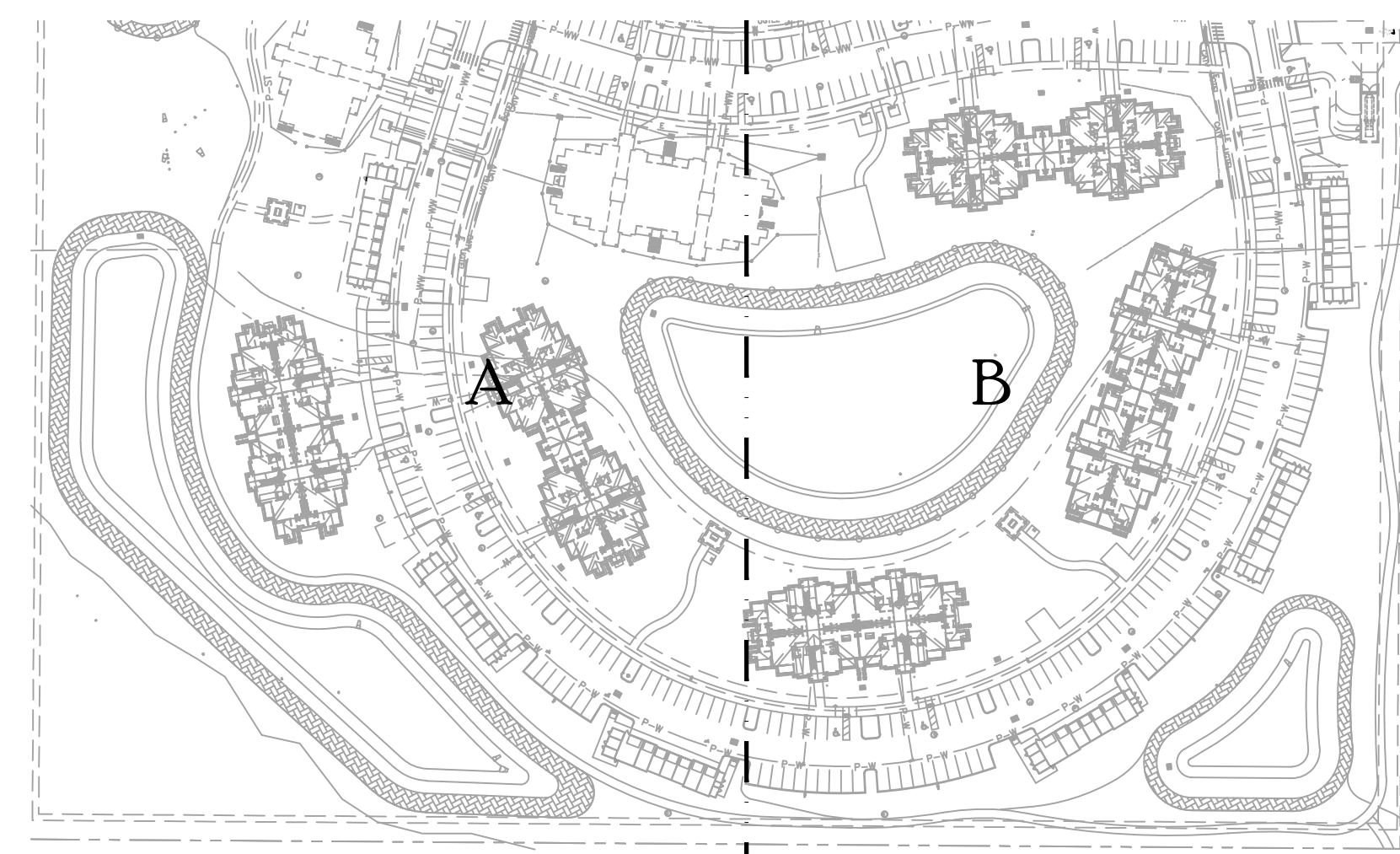
ALL REPRODUCTION, REVISION, OR MODIFICATION OF THESE DOCUMENTS WITHOUT THE EXPRESSED WRITTEN CONSENT OF SLOCUM PLATTS ARCHITECTS, P.A. IS PROHIBITED BY LAW. THE DESIGN IN THESE DRAWINGS ARE THE EXCLUSIVE PROPERTY OF SLOCUM PLATTS ARCHITECTS, P.A. THE COMPANY EXPRESSLY RESERVES THE COPYRIGHT AND ALL OTHER PROPERTY RIGHTS IN THESE PLANS AND ELEVATIONS.



PROPERTY LINE

PROPERTY LINE

PROPERTY LINE



**KEYPLAN**  
SCALE: 1/128" = 1'-0"

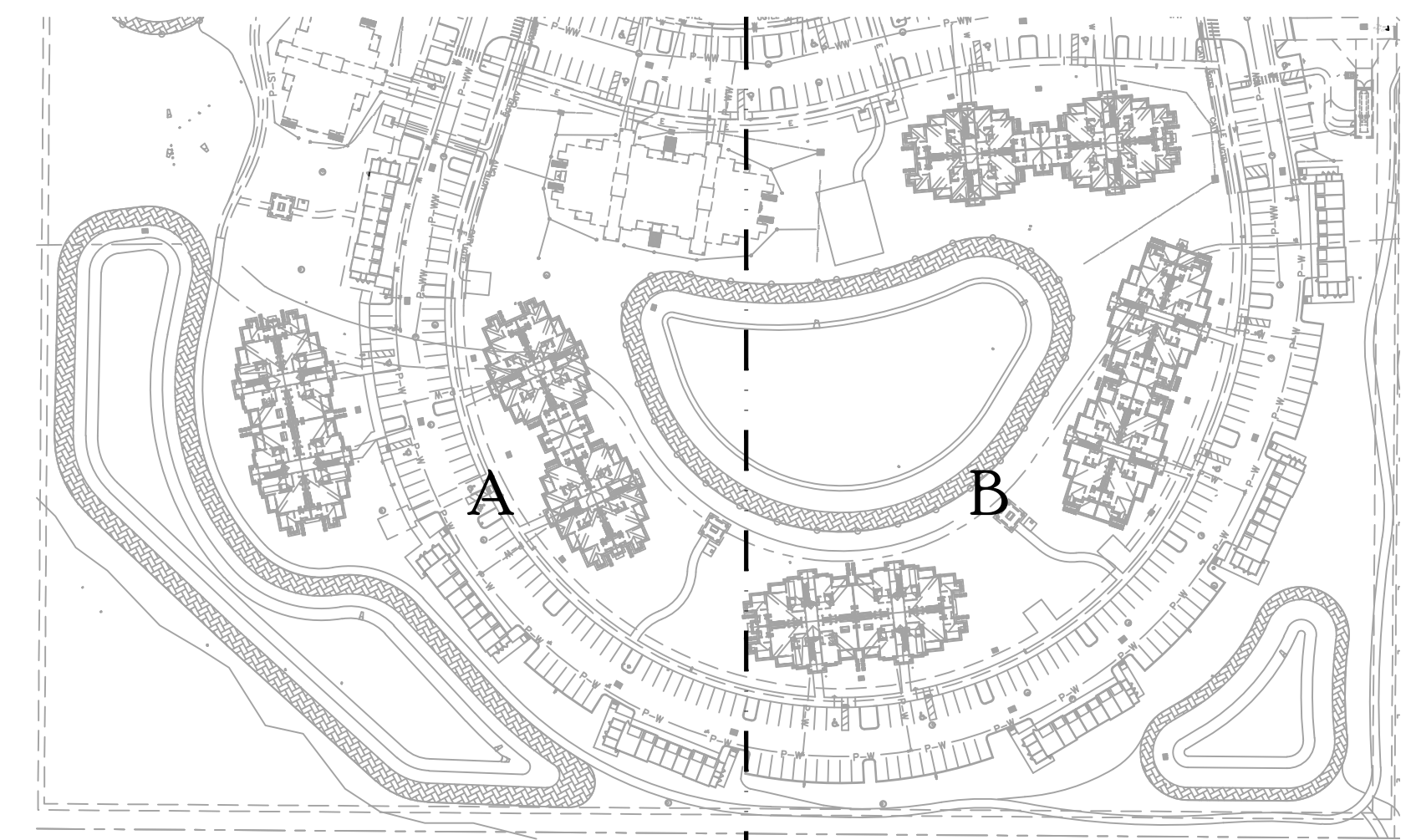
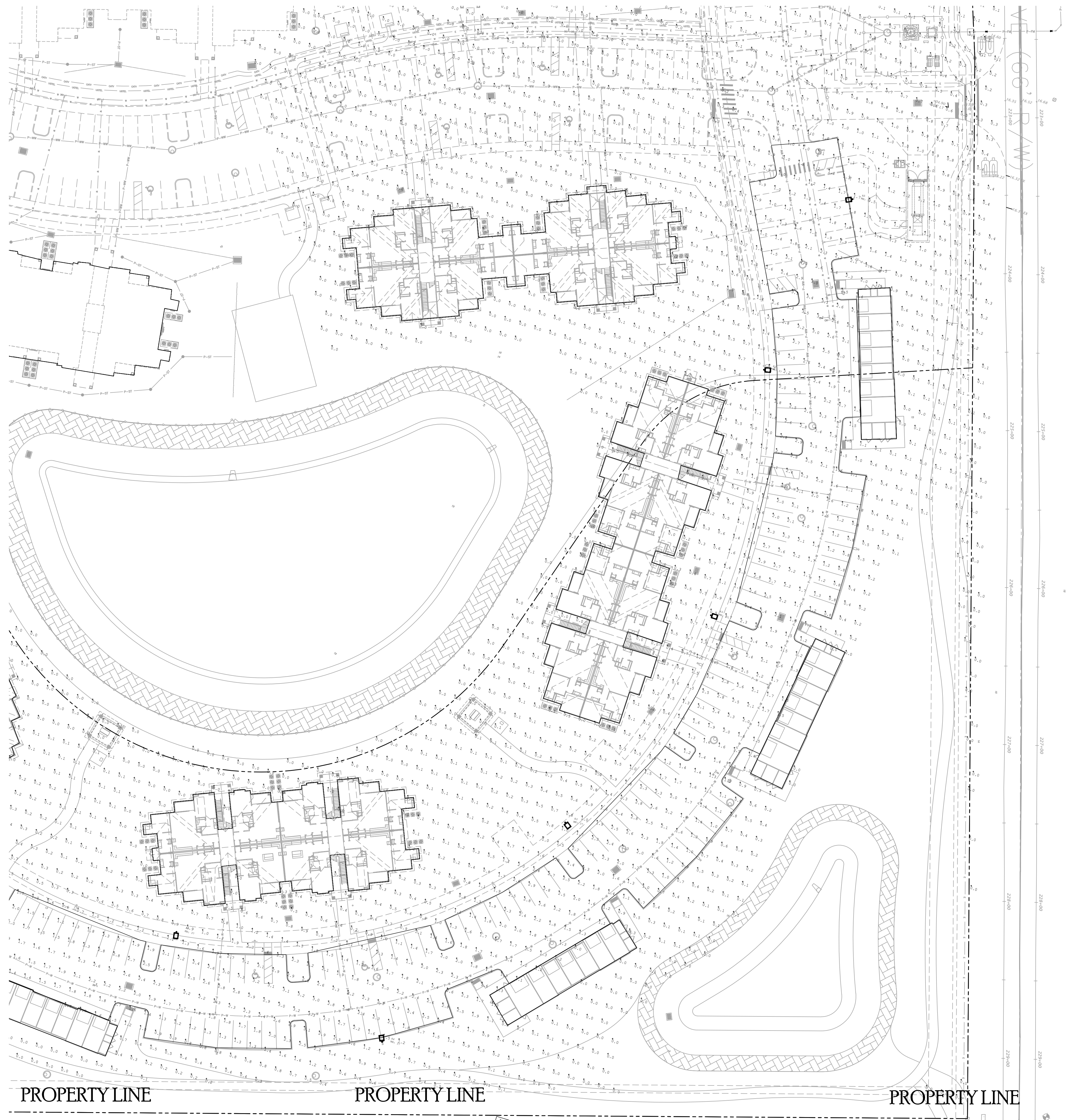
**SITE LIGHTING -  
PHOTOMETRICS PLAN 'A'**  
SCALE: 1/32" = 1'-0"

RESERVED FOR DIGITAL SIGNATURE  
THIS ITEM HAS BEEN ELECTRONICALLY SIGNED AND SEALED BY JOSE L. DOMINGUEZ OROZCO, PE ON THE DATE AND/OR TIME STAMP SHOWN USING A DIGITAL SIGNATURE. PRINTED COPIES OF THIS DOCUMENT ARE NOT CONSIDERED SIGNED AND SEALED AND THE SIGNATURE MUST BE VERIFIED ON ANY ELECTRONIC COPIES.

JOSE L. DOMINGUEZ OROZCO  
No. 91265  
STATE OF FLORIDA  
PROFESSIONAL ENGINEER

<p>REVISIONS DESIGN SET 12-13-22</p>
<p><b>SLOCUM PLATTS ARCHITECTS, P.A.</b> RANDALL J. SLOCUM AR 13350 WILLIAM P. PLATTS AR 13242 670 NORTH ORLANDO AVENUE, SUITE 1001 MAITLAND, FL 32751 TEL. (407)645-3019 FAX (407)645-2771 WWW.SLOCUMPLATTS.COM</p>
<p><b>WILSON ARGENTI ENGINEERING</b> C.O.A. #26759 200 E. ROBINSON STREET, STE. 970 ORLANDO, FL 32801 WORKWITHWG.COM 813.856.3330</p>
<p><b>SITE LIGHTING PHOTOMETRICS PLAN 'A'</b> <b>MILLS CREEK PRESERVE APARTMENTS - PHASE II</b> YULEE FLORIDA</p>
<p>DRAWN CHECKED DATE 12-13-22 SCALE AS NOTED JOB NO. 22-058 SHEET ES101</p>

ANY REPRODUCTION, IN WHOLE OR IN PART, OF THESE DOCUMENTS WITHOUT THE EXPRESSED WRITTEN CONSENT OF SLOCUM PLATTS ARCHITECTS, P.A. IS PROHIBITED BY LAW. THE DESIGN IN THESE DRAWINGS ARE THE SOLE PROPERTY OF SLOCUM PLATTS ARCHITECTS, P.A. THE COMPANY EXPRESSLY RESERVES ALL COPYRIGHT AND ALL OTHER PROPERTY RIGHTS IN THESE PLANS AND ELEVATIONS.



**KEYPLAN**  
SCALE: 1/128" = 1'-0"

**SITE LIGHTING -  
PHOTOMETRICS PLAN 'B'**  
SCALE: 1/32" = 1'-0"

PROPERTY LINE

PROPERTY LINE

PROPERTY LINE

RESERVED FOR DIGITAL SIGNATURE  
THIS ITEM HAS BEEN ELECTRONICALLY SIGNED AND SEALED BY JOSE L. DOMINGUEZ OROZCO, PE ON THE DATE AND/OR TIME STAMP SHOWN USING A DIGITAL SIGNATURE. PRINTED COPIES OF THIS DOCUMENT ARE NOT CONSIDERED SIGNED AND SEALED AND THE SIGNATURE MUST BE VERIFIED ON ANY ELECTRONIC COPIES.

JOSE L. DOMINGUEZ OROZCO  
No. 91265  
STATE OF FLORIDA  
PROFESSIONAL ENGINEER

REVISIONS
DESIGN SET
12-13-22

**SLOCUM PLATTS ARCHITECTS, P.A.**  
RANDALL J. SLOCUM AR 13350 WILLIAM P. PLATTS AR 13242  
670 NORTH ORLANDO AVENUE, SUITE 1001 MAITLAND, FL 32751  
TEL. (407)645-3019 FAX (407)645-2771  
WWW.SLOCUMPLATTS.COM



C.O.A. #26759  
**IRLSON ARGENTI ENGINEERING**  
200 E. ROBINSON STREET, STE. 970  
ORLANDO, FL 32801  
WORKWITHWG.COM  
813.856.3330

**SITE LIGHTING PHOTOMETRICS PLAN 'B'**  
**MILLS CREEK PRESERVE APARTMENTS - PHASE II**  
FLORIDA  
YULEE

DRAWN	
CHECKED	
DATE	12-13-22
SCALE	AS NOTED
JOB NO.	22-058
SHEET	ES102

ANY REPRODUCTION, IN WHOLE OR IN PART, WITHOUT THE EXPRESSED WRITTEN CONSENT OF SLOCUM PLATTS ARCHITECTS, P.A. IS PROHIBITED BY LAW. THE DESIGN IN THESE DRAWINGS ARE THE SOLE PROPERTY OF SLOCUM PLATTS ARCHITECTS, P.A. THE COMPANY EXPRESSLY RESERVES ALL COPYRIGHT AND ALL OTHER PROPERTY RIGHTS IN THESE PLANS AND ELEVATIONS.



# SLING Micro Strike

AREA/SITE/ROAD LIGHTER

DATE: LOCATION:  
TYPE: A3 PROJECT: Mills Creek Preserve Phase II  
CATALOG #: ASL2-320L-210-4K7-3-UNV-MAF-FINISH

### ORDERING GUIDE

Example: ASL1-80L-50-3K7-2-UNV-ASQU-BLT-7PRMD-40F

CATALOG # ASL2-320L-210-4K7-3-UNV-MAF-FINISH

### ORDERING INFORMATION

Series	# LEDs	CCT/CRI	Distribution	Voltage	Mounting
ASL1 ASL Microstrike Series	80L-25 3,000 lm 80L-39 4,500 lm 80L-50 6,000 lm 80L-70 9,000 lm 160L-100 12,000 lm 160L-115 15,000 lm 160L-135 18,000 lm 320L-145 21,000 lm 320L-170 24,000 lm 320L-185 27,000 lm 320L-210 30,000 lm 320L-235 33,000 lm 320L-255 35,000 lm	3K7 3000K, 70 CRI 4K7 4000K, 70 CRI 5K7 5000K, 70 CRI	2 Type I 3 Type II 4W Type 4W 5QW Type 5QW	UNV Universal 120 120V 208 208V 240 240V 277 277V 347 347V 480 480V	A Arm for Square poles with S2 drill pattern A3 AS with 3.5-4.13" OD R9A3 & LM A4 AS with 4.18-5.25" OD R9M4 & U A5 AS with 5.5-6.5" OD R9A5 & U MAF Mast Arm Fitter for 2-3/8" OD

Control Options/Other	Options	Specify Finish
7PR 7 Pin Receptacle 7PR-SC 7 Pin Receptacle with shunting cap 7PR-MDBF 7 pin receptacle with low voltage sensor at 8' mounting for external control accessory 7PR-MD40F 7 pin receptacle with low voltage sensor at 40' mounting for external control accessory 7PR-TL 7 Pin Receptacle with Photocell	F Fusing BC Backlight Control	Color BLT Black Matte Textured BLS Black Gloss Smooth DBT Dark Bronze Matte Textured DBS Dark Bronze Glass Smooth GTT Graphite Matte Textured LGS Light Grey Glass Smooth LGT Light Grey Matte Textured PSS Platinum Silver Smooth WHT White Matte Textured WHS White Glass Smooth VGT Verde Green Textured Color Option CC Custom Color

Notes:  
1 Not compatible with 80L configurations  
2 Not compatible with 480V configurations  
3 Must specify voltage  
4 Not available with a combination of 347/480 and fusing  
5 Must specify voltage, 120V or 277V only  
6 Order at least one SPC-4640TE per project location to program and control the occupancy sensor  
7 Replace "L" with "H" for up to 14' mounting height, "40F" for 5-40' mounting height  
8 Replace "L" with "12" for up to 12' mounting height

currentlighting.com/EXO  
© 2022 H.I. Solutions, Inc. All rights reserved. Information and specifications subject to change without notice. All values are design or typical values when measured under laboratory conditions.  
SLING MicroStrike V2\_R01



# SLING Micro Strike

AREA/SITE/ROAD LIGHTER

DATE: LOCATION:  
TYPE: A4 PROJECT: Mills Creek Preserve Phase II  
CATALOG #: ASL2-320L-210-4K7-4W-UNV-MAF-FINISH

### ORDERING GUIDE

Example: ASL1-80L-50-3K7-2-UNV-ASQU-BLT-7PRMD-40F

CATALOG # ASL2-320L-210-4K7-4W-UNV-MAF-FINISH

### ORDERING INFORMATION

Series	# LEDs	CCT/CRI	Distribution	Voltage	Mounting
ASL1 ASL Microstrike Series	80L-25 3,000 lm 80L-39 4,500 lm 80L-50 6,000 lm 80L-70 9,000 lm 160L-100 12,000 lm 160L-115 15,000 lm 160L-135 18,000 lm 320L-145 21,000 lm 320L-170 24,000 lm 320L-185 27,000 lm 320L-210 30,000 lm 320L-235 33,000 lm 320L-255 35,000 lm	3K7 3000K, 70 CRI 4K7 4000K, 70 CRI 5K7 5000K, 70 CRI	2 Type II 3 Type II 4W Type 4W 5QW Type 5QW	UNV Universal 120 120V 208 208V 240 240V 277 277V 347 347V 480 480V	A Arm for Square poles with S2 drill pattern A3 AS with 3.5-4.13" OD R9A3 & LM A4 AS with 4.18-5.25" OD R9M4 & U A5 AS with 5.5-6.5" OD R9A5 & U MAF Mast Arm Fitter for 2-3/8" OD

Control Options/Other	Options	Specify Finish
7PR 7 Pin Receptacle 7PR-SC 7 Pin Receptacle with shunting cap 7PR-MDBF 7 pin receptacle with low voltage sensor at 8' mounting for external control accessory 7PR-MD40F 7 pin receptacle with low voltage sensor at 40' mounting for external control accessory 7PR-TL 7 Pin Receptacle with Photocell	F Fusing BC Backlight Control	Color BLT Black Matte Textured BLS Black Gloss Smooth DBT Dark Bronze Matte Textured DBS Dark Bronze Glass Smooth GTT Graphite Matte Textured LGS Light Grey Glass Smooth LGT Light Grey Matte Textured PSS Platinum Silver Smooth WHT White Matte Textured WHS White Glass Smooth VGT Verde Green Textured Color Option CC Custom Color

Notes:  
1 Not compatible with 80L configurations  
2 Not compatible with 480V configurations  
3 Must specify voltage  
4 Not available with a combination of 347/480 and fusing  
5 Must specify voltage, 120V or 277V only  
6 Order at least one SPC-4640TE per project location to program and control the occupancy sensor  
7 Replace "L" with "H" for up to 14' mounting height, "40F" for 5-40' mounting height  
8 Replace "L" with "12" for up to 12' mounting height

currentlighting.com/EXO  
© 2022 H.I. Solutions, Inc. All rights reserved. Information and specifications subject to change without notice. All values are design or typical values when measured under laboratory conditions.  
SLING MicroStrike V2\_R01



# SLING Micro Strike

AREA/SITE/ROAD LIGHTER

DATE: LOCATION:  
TYPE: A5 PROJECT: Mills Creek Preserve Phase II  
CATALOG #: ASL2-320L-210-4K7-5QW-UNV-MAF-FINISH

### ORDERING GUIDE

Example: ASL1-80L-50-3K7-2-UNV-ASQU-BLT-7PRMD-40F

CATALOG # ASL2-320L-210-4K7-5QW-UNV-MAF-FINISH

### ORDERING INFORMATION

Series	# LEDs	CCT/CRI	Distribution	Voltage	Mounting
ASL1 ASL Microstrike Series	80L-25 3,000 lm 80L-39 4,500 lm 80L-50 6,000 lm 80L-70 9,000 lm 160L-100 12,000 lm 160L-115 15,000 lm 160L-135 18,000 lm 320L-145 21,000 lm 320L-170 24,000 lm 320L-185 27,000 lm 320L-210 30,000 lm 320L-235 33,000 lm 320L-255 35,000 lm	3K7 3000K, 70 CRI 4K7 4000K, 70 CRI 5K7 5000K, 70 CRI	2 Type II 3 Type II 4W Type 4W 5QW Type 5QW	UNV Universal 120 120V 208 208V 240 240V 277 277V 347 347V 480 480V	A Arm for Square poles with S2 drill pattern A3 AS with 3.5-4.13" OD R9A3 & LM A4 AS with 4.18-5.25" OD R9M4 & U A5 AS with 5.5-6.5" OD R9A5 & U MAF Mast Arm Fitter for 2-3/8" OD

Control Options/Other	Options	Specify Finish
7PR 7 Pin Receptacle 7PR-SC 7 Pin Receptacle with shunting cap 7PR-MDBF 7 pin receptacle with low voltage sensor at 8' mounting for external control accessory 7PR-MD40F 7 pin receptacle with low voltage sensor at 40' mounting for external control accessory 7PR-TL 7 Pin Receptacle with Photocell	F Fusing BC Backlight Control	Color BLT Black Matte Textured BLS Black Gloss Smooth DBT Dark Bronze Matte Textured DBS Dark Bronze Glass Smooth GTT Graphite Matte Textured LGS Light Grey Glass Smooth LGT Light Grey Matte Textured PSS Platinum Silver Smooth WHT White Matte Textured WHS White Glass Smooth VGT Verde Green Textured Color Option CC Custom Color

Notes:  
1 Not compatible with 80L configurations  
2 Not compatible with 480V configurations  
3 Must specify voltage  
4 Not available with a combination of 347/480 and fusing  
5 Must specify voltage, 120V or 277V only  
6 Order at least one SPC-4640TE per project location to program and control the occupancy sensor  
7 Replace "L" with "H" for up to 14' mounting height, "40F" for 5-40' mounting height  
8 Replace "L" with "12" for up to 12' mounting height

currentlighting.com/EXO  
© 2022 H.I. Solutions, Inc. All rights reserved. Information and specifications subject to change without notice. All values are design or typical values when measured under laboratory conditions.  
SLING MicroStrike V2\_R01

REVISIONS
DESIGN SET 12-13-22

**SLOCUM PLATTS ARCHITECTS, P.A.**  
RANDALL J. SLOCUM AR 13350 WILLIAM P. PLATTS AR 13242  
670 NORTH ORLANDO AVENUE, SUITE 1001 MAITLAND, FL 32751  
TEL: (407)645-3019 FAX: (407)645-2771  
WWW.SLOCUMPLATTS.COM

**GILSON ARGENTI ENGINEERING**  
C.O.A. #26759  
200 E. ROBINSON STREET, STE. 970  
ORLANDO, FL 32801  
WORKWITHWG.COM  
813.856.3330

**SITE PLAN CUTSHEETS**  
MILLS CREEK PRESERVE APARTMENTS - PHASE II  
FLORIDA  
YULEE

DRAWN	DATE
CHECKED	12-13-22
SCALE	AS NOTED
JOB NO.	22-058
SHEET	ES201

RESERVED FOR DIGITAL SIGNATURE  
THIS ITEM HAS BEEN ELECTRONICALLY SIGNED AND SEALED BY JOSE L. DOMINGUEZ OROZCO, PE ON THE DATE AND/OR TIME STAMP SHOWN USING A DIGITAL SIGNATURE. PRINTED COPIES OF THIS DOCUMENT ARE NOT CONSIDERED SIGNED AND SEALED AND THE SIGNATURE MUST BE VERIFIED ON ANY ELECTRONIC COPIES.

JOSE L. DOMINGUEZ OROZCO  
No. 91265  
STATE OF FLORIDA  
PROFESSIONAL ENGINEER

