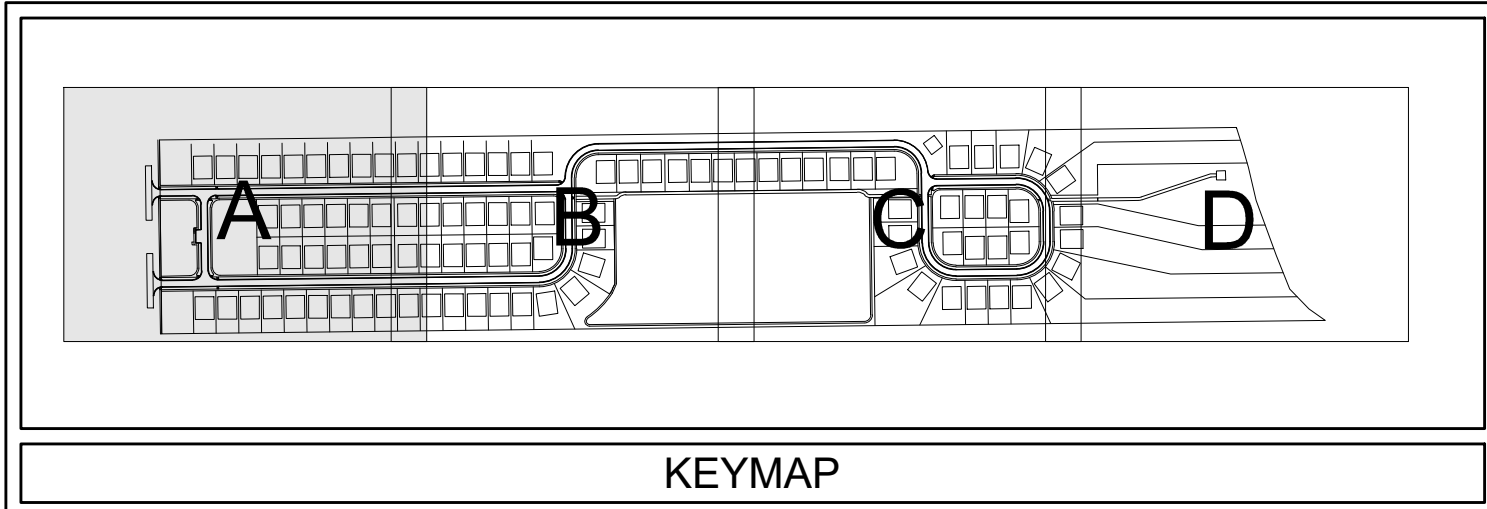
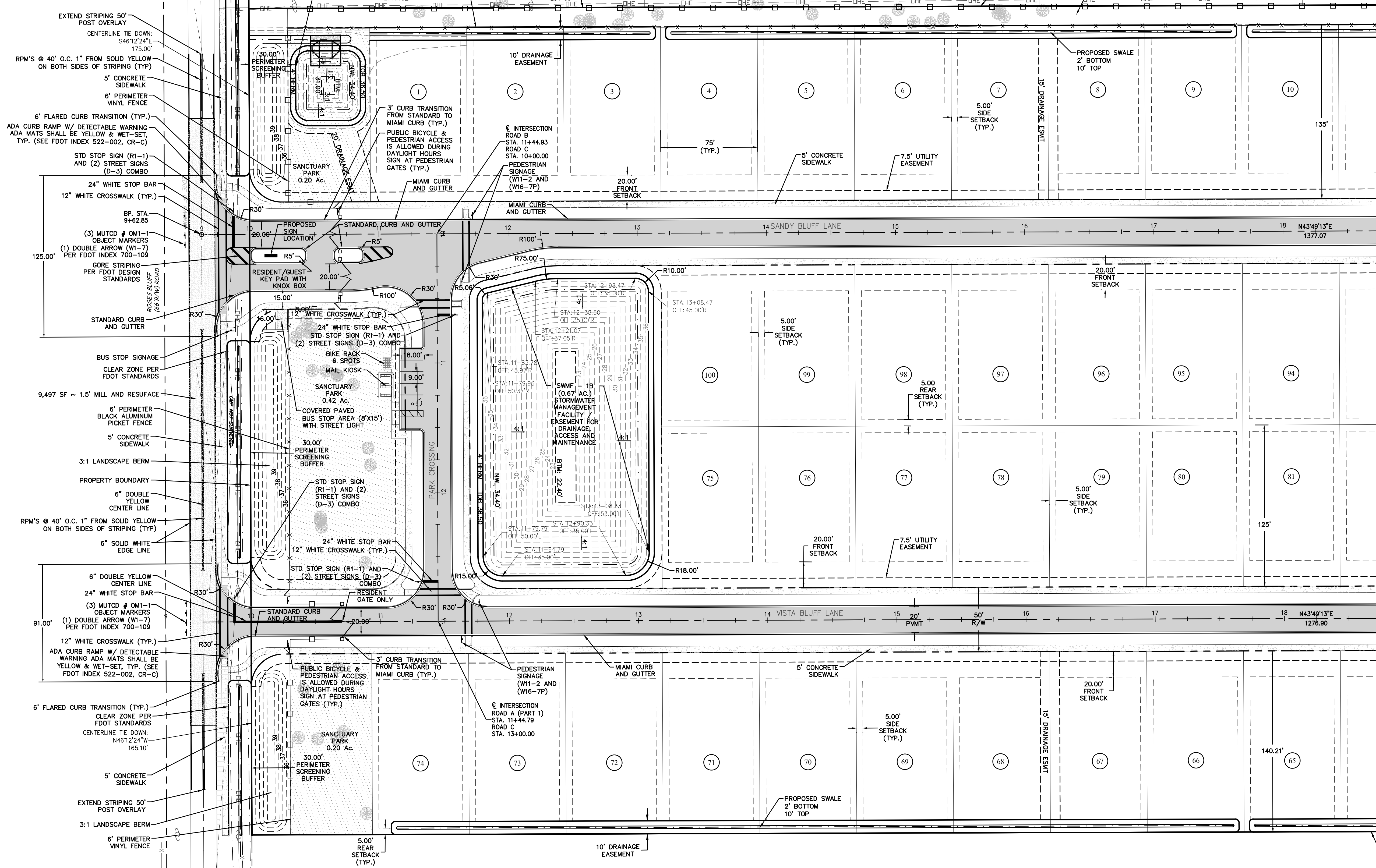


NOTES:

- CONTRACTOR TO VERIFY SURVEY INFORMATION AND NOTIFY ENGINEER OF RECORD OF ANY DISCREPANCY
- EXPOSED SOILS SHOULD IMMEDIATELY BE SOODED
- CONTRACTOR TO INSTALL BLUE RPM DEVICE 6" FROM MIDDLE OF STREET ON THE SIDE CLOSEST TO FIRE HYDRANT
- CONTRACTOR SHALL MAINTAIN A MINIMUM OF 18" SEPARATION BETWEEN UTILITIES AND STORM PIPE
- CONTRACTOR SHALL MAINTAIN A MINIMUM OF 6' FROM OUTSIDE OF PIPE TO EXISTING UTILITY POLE
- CONTRACTOR SHALL REMOVE, PROTECT, AND REPLACE (IF DAMAGED) ANY SIGNS AS NEEDED DURING THE DURATION OF CONSTRUCTION
- CONTRACTOR SHALL REMOVE AND REPLACE ANY MAILBOXES AS NEEDED FOR CONSTRUCTION ON UTILITY. MAIL SERVICES MUST BE MAINTAINED THROUGHOUT THE DURATION OF CONSTRUCTION. ALSO, OFFSITE CONSTRUCTION SHALL NOT INTERFERE WITH TRASH PICKUP
- ANY PAVEMENT THAT IS DAMAGED DURING CONSTRUCTION OF UTILITIES, CONTRACTOR IS REQUIRED A FULL WIDTH OVERLAY, PLUS 50' IN BOTH DIRECTIONS.
- CONTRACTOR TO PROVIDE MIN. 6' DISTANCE FROM UTILITY INSTALLATION FROM EDGE OF PAVEMENT AT ALL TIME. WHERE UTILITIES CANT MEET REQUIREMENTS, THE SHOULDER SHALL BE REBUILT VIA TWO LIFTS OF LIMEROCK
- ROSES BLUFF ROW SHALL BE VIDEOED PRIOR TO CONSTRUCTION COMMENCEMENT.

NOTES:

- SEE SHEET NUMBER 3 FOR GENERAL NOTES.
- ALL DIMENSIONS ARE TO EDGE OF PAVEMENT UNLESS OTHERWISE NOTED.
- CONTRACTOR SHALL PROVIDE CURB RAMP AT ALL PLACES WHERE SIDEWALK TERMINATES INTO PAVEMENT. CURB RAMP SHALL COMPLY WITH THE LATEST ADA CODE PER FDOT INDEX 304.
- STOP BARS SHALL BE LOCATED 4.0' MIN. FROM CROSSWALKS AND / OR CURB RAMP.
- ALL ELEMENTS THAT ARE PLACES OF PUBLIC ACCOMMODATIONS AND COMMERCIAL FACILITIES ON THE SITE (INCLUDING ACCESSIBLE ROUTES AND PARKING) SHALL MEET THE REQUIREMENTS OF "FLORIDA AMERICANS WITH DISABILITIES ACCESSIBILITY IMPLEMENTATION ACT", 2010 ADA STANDARDS FOR ACCESSIBLE DESIGN AND 2012 FLORIDA ACCESSIBILITY CODE FOR BUILDING CONSTRUCTION AND THE FAIR HOUSING ACT, WHEN APPLICABLE.



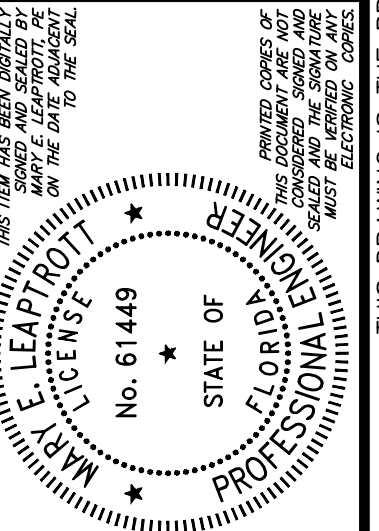
OW Connelly & Wicker Inc.
 Planning • Engineering • Landscape Architecture
 10060 Skimmer Lake Drive, Suite 500 Jacksonville, Florida 32246
 (904) 265-3030 FAX: (904) 265-3031 www.owc.com
 Florida Registry 3650 L.A. Number: LC26000311

No.	Date	Revision

SITE PLAN

SANDY BLUFF SUBDIVISION

PREPARED FOR
SANDY BLUFF DEVELOPMENT INC



Project No.: 21-01-0057
 Designed: MEL
 Date: 10/25/23
 Drawn: ANB
 Scale: 1"=40'
 Sheet 7A

THIS DRAWING IS THE PROPERTY OF CONNELLY & WICKER INC. AND IS NOT TO BE REPRODUCED OR COPIED IN WHOLE OR IN PART. IT IS NOT TO BE USED ON ANY OTHER PROJECT AND IS TO BE RETURNED ON REQUEST.

Printed By: April
Printed: Oct 25, 2023 - 1:38pm

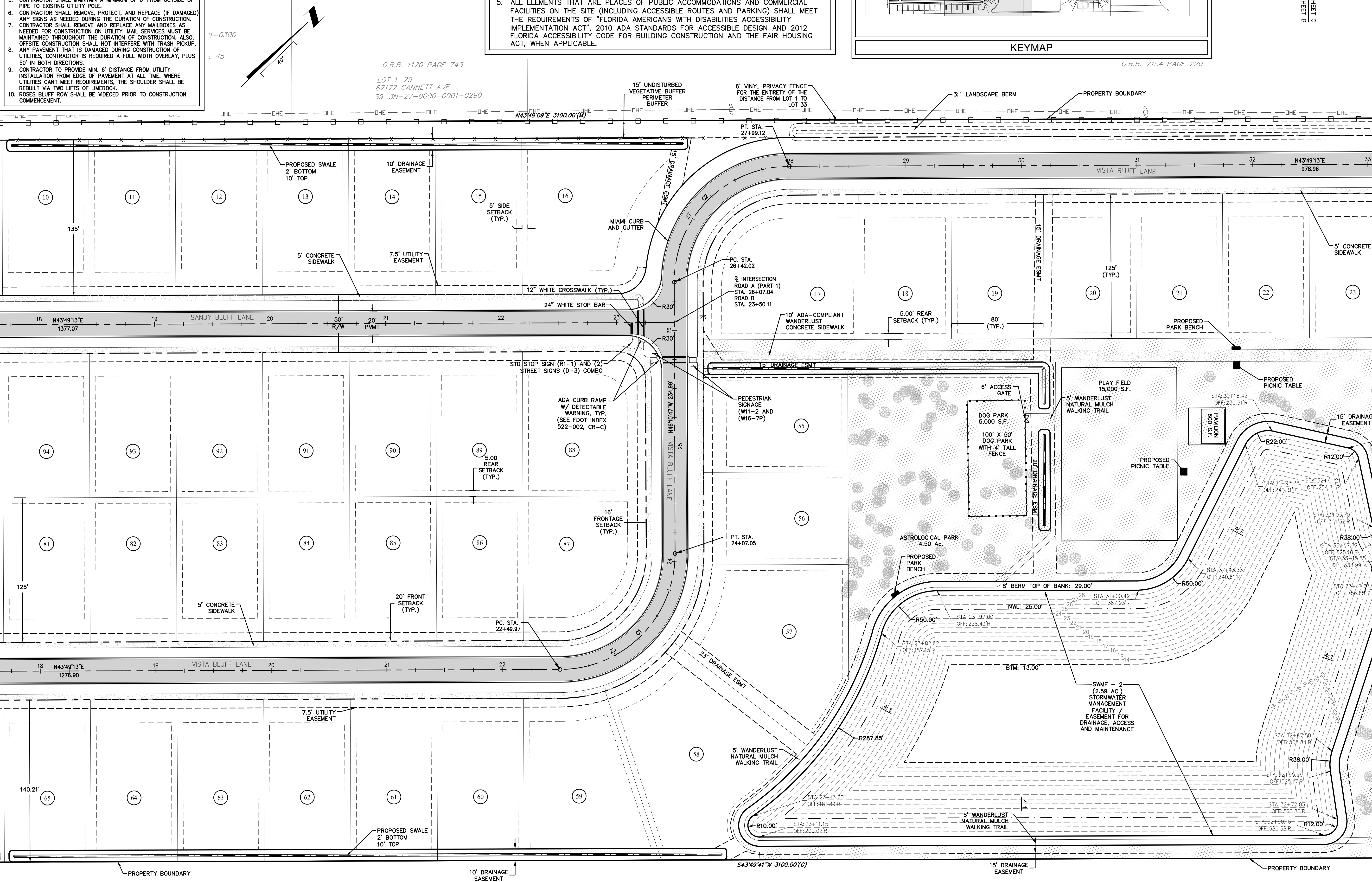
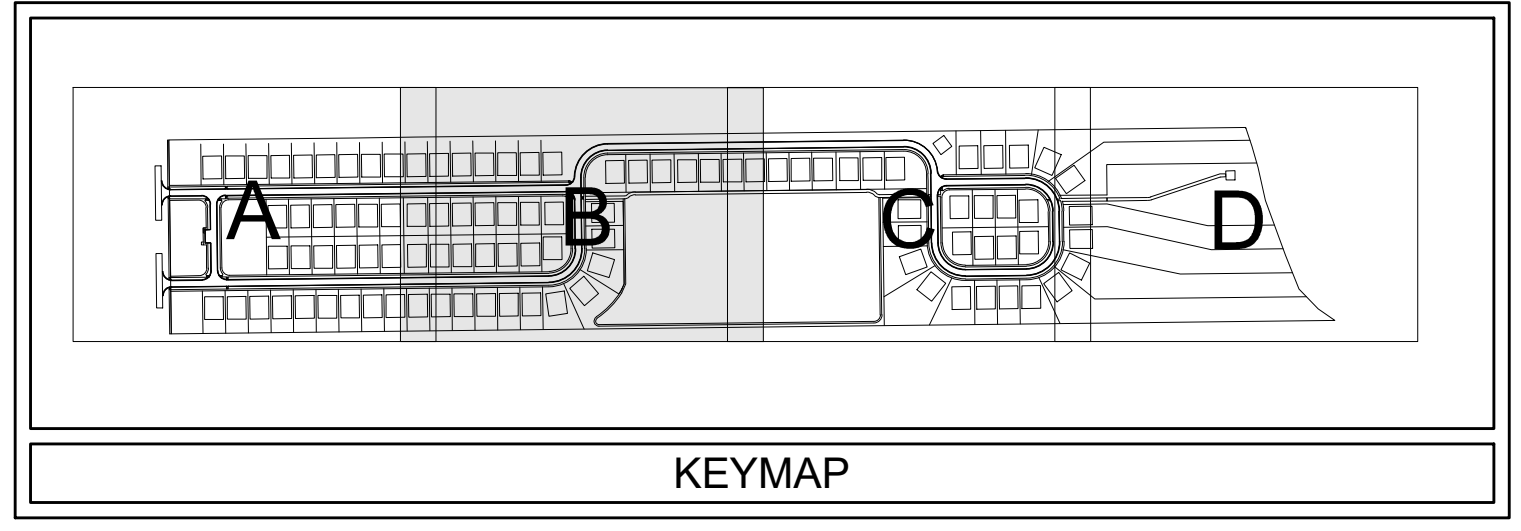
J:\21-01-0057 Sandy Bluff Design\Drawings\Plots\21-01-0057 Site-Sheets.dwg

- NOTES:**
- CONTRACTOR TO VERIFY SURVEY INFORMATION AND NOTIFY ENGINEER OF RECORD OF ANY DISCREPANCY
 - EXPOSED SOILS SHOULD IMMEDIATELY BE SOODED
 - CONTRACTOR TO INSTALL BLUE RPM DEVICE 6" FROM MIDDLE OF STREET ON THE SIDE CLOSEST TO FIRE HYDRANT
 - CONTRACTOR SHALL MAINTAIN A MINIMUM OF 18" SEPARATION BETWEEN UTILITIES AND STORM PIPE
 - CONTRACTOR SHALL MAINTAIN A MINIMUM OF 6' FROM OUTSIDE OF PIPE TO EXISTING UTILITY POLE
 - CONTRACTOR SHALL REMOVE, PROTECT, AND REPLACE (IF DAMAGED) ANY SIGNS AS NEEDED DURING THE DURATION OF CONSTRUCTION
 - CONTRACTOR SHALL REMOVE AND REPLACE ANY MAILBOXES AS NEEDED FOR CONSTRUCTION ON UTILITY. MAIL SERVICES MUST BE MAINTAINED THROUGHOUT THE DURATION OF CONSTRUCTION. ALSO, OFFSITE CONSTRUCTION SHALL NOT INTERFERE WITH TRASH PICKUP
 - ANY PAVEMENT THAT IS DAMAGED DURING CONSTRUCTION OF UTILITIES, CONTRACTOR IS REQUIRED A FULL WIDTH OVERLAY, PLUS 50' IN BOTH DIRECTIONS
 - CONTRACTOR TO PROVIDE MIN. 6' DISTANCE FROM UTILITY INSTALLATION FROM EDGE OF PAVEMENT AT ALL TIME. WHERE UTILITIES CANT MEET REQUIREMENTS, THE SHOULDER SHALL BE REBUILT VIA TWO LIFTS OF LIMEROCK
 - ROSES BLUFF ROW SHALL BE VIDEOED PRIOR TO CONSTRUCTION COMMENCEMENT

CURVE TABLE: ALIGNMENTS

CURVE	RADIUS	LENGTH	TANGENT	BEARING	CHORD	DELTA
C1	100.00'	157.08'	100.00'	N1° 10' 47"W	141.42'	90°00'00"
C2	100.00'	157.09'	100.02'	N1° 11' 06"W	141.43'	90°00'37"

- NOTES:**
- SEE SHEET NUMBER 3 FOR GENERAL NOTES.
 - ALL DIMENSIONS ARE TO EDGE OF PAVEMENT UNLESS OTHERWISE NOTED.
 - CONTRACTOR SHALL PROVIDE CURB RAMPS AT ALL PLACES WHERE SIDEWALK TERMINATES INTO PAVEMENT. CURB RAMPS SHALL COMPLY WITH THE LATEST ADA CODE PER FDOT INDEX 304.
 - STOP BARS SHALL BE LOCATED 4.0' MIN. FROM CROSSWALKS AND / OR CURB RAMPS.
 - ALL ELEMENTS THAT ARE PLACES OF PUBLIC ACCOMMODATIONS AND COMMERCIAL FACILITIES ON THE SITE (INCLUDING ACCESSIBLE ROUTES AND PARKING) SHALL MEET THE REQUIREMENTS OF "FLORIDA AMERICANS WITH DISABILITIES ACCESSIBILITY IMPLEMENTATION ACT", 2010 ADA STANDARDS FOR ACCESSIBLE DESIGN AND 2012 FLORIDA ACCESSIBILITY CODE FOR BUILDING CONSTRUCTION AND THE FAIR HOUSING ACT, WHEN APPLICABLE.



Connelly & Wicker Inc.
 Engineering • Landscape Architecture
 10060 Skimmer Lake Drive, Suite 500 Jacksonville, Florida 32246
 (904) 265-3030 FAX: (904) 265-3031 www.connelly-wicker.com
 Florida Registry 3650 L.A. Number: LC26000311

Revision

No.	Date	Description

SITE PLAN

PREPARED FOR
SANDY BLUFF DEVELOPMENT INC

Professional Engineer
 State of Florida
 No. 61449
 M. LEAP ROTH

Project No.: 21-01-0057
 Designed: MEL
 Date: 10/25/23
 Drawn: ANB
 Scale: 1"=40'
 Sheet **7B**

THIS DRAWING IS THE PROPERTY OF CONNELLY & WICKER INC. AND IS NOT TO BE REPRODUCED OR COPIED IN WHOLE OR IN PART. IT IS NOT TO BE USED ON ANY OTHER PROJECT AND IS TO BE RETURNED ON REQUEST.

Printed: Oct 25, 2023 - 1:39pm

J:\2121-01-0057 Sandy Bluff\Design\Drawings\Plots\21-01-0057 Site-Sheets.dwg

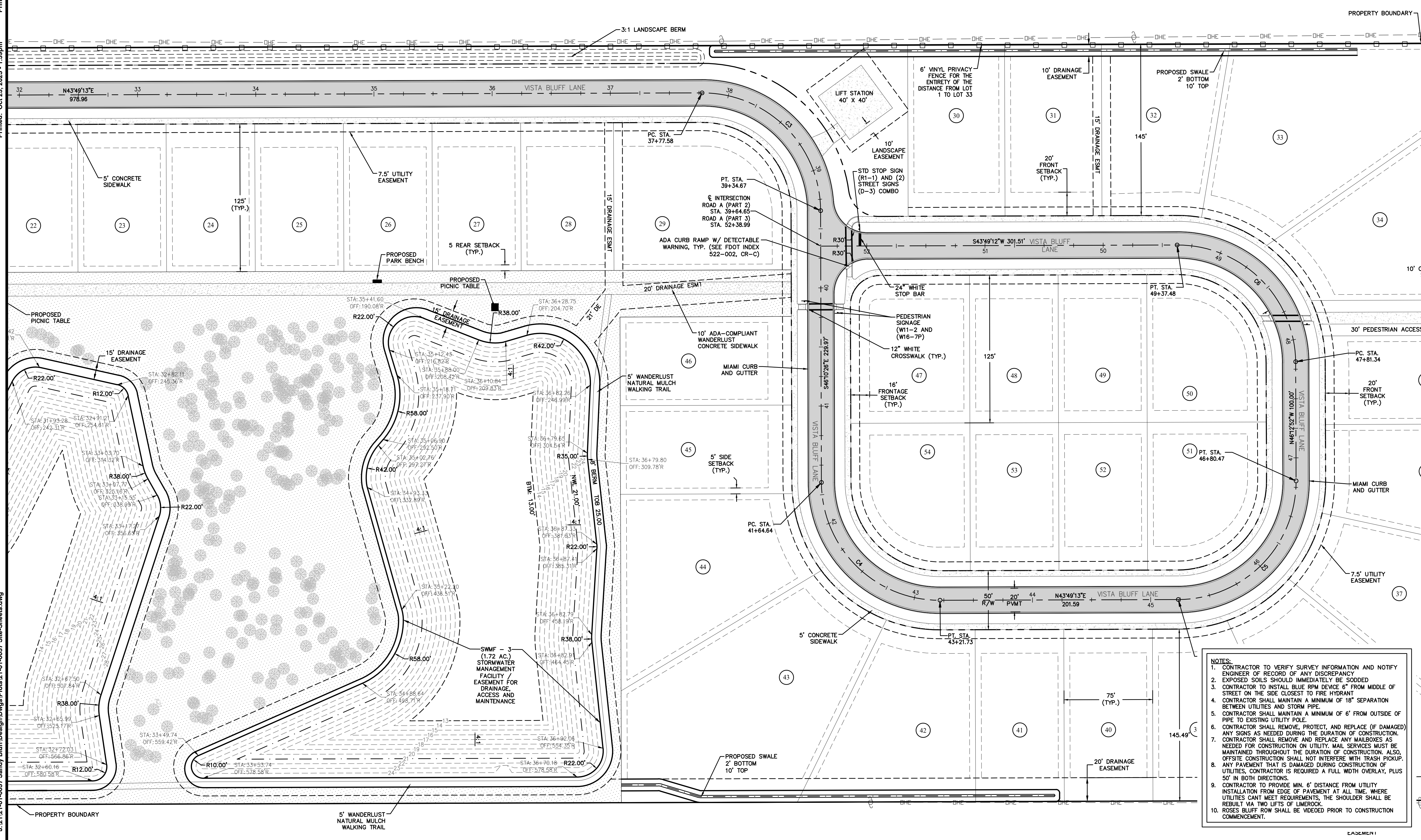
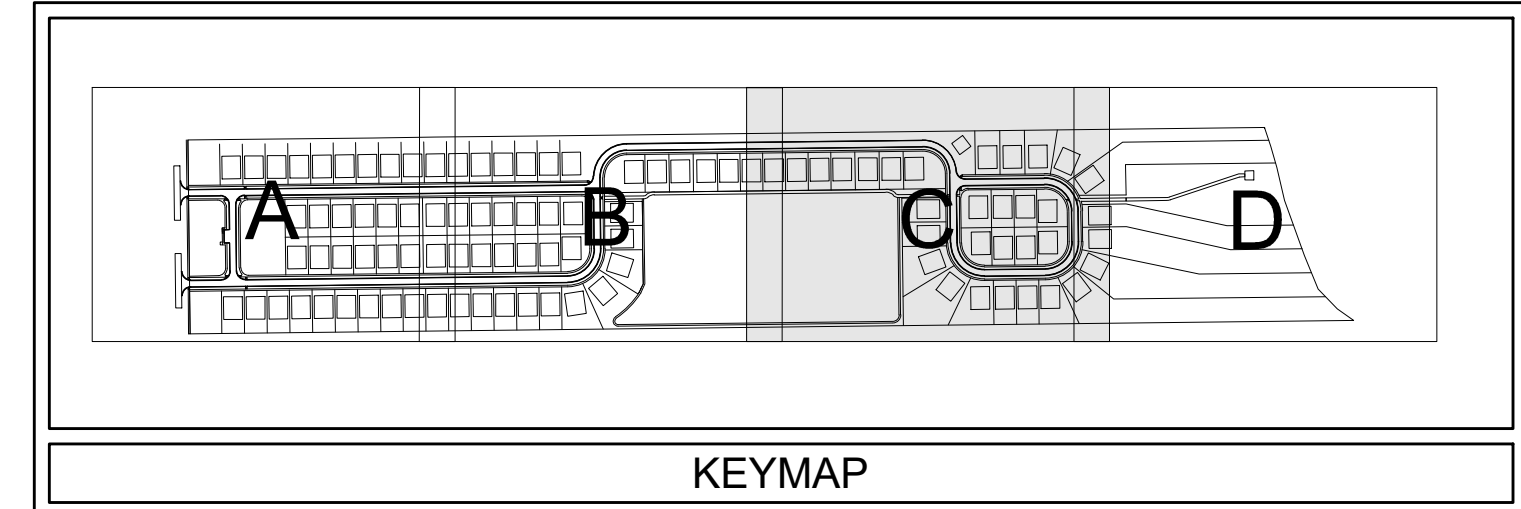
MATCHLINE SHEET B
MATCHLINE SHEET C

MATCHLINE SHEET D
MATCHLINE SHEET E

CURVE TABLE: ALIGNMENTS						
CURVE	RADIUS	LENGTH	TANGENT	BEARING	CHORD	DELTA
C3	100.00'	157.09'	100.01'	N88° 49' 23"E	141.43'	90°00'21"
C4	100.00'	157.09'	100.01'	N88° 49' 23"E	141.43'	90°00'21"
C5	100.00'	157.14'	100.06'	N1° 11' 50"W	141.46'	90°02'05"
C6	99.99'	156.14'	99.07'	S88° 33' 14"W	140.75'	89°28'03"

NOTES:

- SEE SHEET NUMBER 3 FOR GENERAL NOTES.
- ALL DIMENSIONS ARE TO EDGE OF PAVEMENT UNLESS OTHERWISE NOTED.
- CONTRACTOR SHALL PROVIDE CURB RAMPS AT ALL PLACES WHERE SIDEWALK TERMINATES INTO PAVEMENT. CURB RAMPS SHALL COMPLY WITH THE LATEST ADA CODE PER FDOT INDEX 304.
- STOP BARS SHALL BE LOCATED 4.0' MIN. FROM CROSSWALKS AND / OR CURB RAMPS.
- ALL ELEMENTS THAT ARE PLACES OF PUBLIC ACCOMMODATIONS AND COMMERCIAL FACILITIES ON THE SITE (INCLUDING ACCESSIBLE ROUTES AND PARKING) SHALL MEET THE REQUIREMENTS OF "FLORIDA AMERICANS WITH DISABILITIES ACCESSIBILITY IMPLEMENTATION ACT", 2010 ADA STANDARDS FOR ACCESSIBLE DESIGN AND 2012 FLORIDA ACCESSIBILITY CODE FOR BUILDING CONSTRUCTION AND THE FAIR HOUSING ACT, WHEN APPLICABLE.



NOTES:

- CONTRACTOR TO VERIFY SURVEY INFORMATION AND NOTIFY ENGINEER OF RECORD OF ANY DISCREPANCY
- EXPOSED SOILS SHOULD IMMEDIATELY BE SODDED
- CONTRACTOR TO INSTALL BLUE RIM DEVICE 6" FROM MIDDLE OF STREET ON THE SIDE CLOSEST TO FIRE HYDRANT
- CONTRACTOR SHALL MAINTAIN A MINIMUM OF 18" SEPARATION BETWEEN UTILITIES AND STORM PIPE.
- CONTRACTOR SHALL MAINTAIN A MINIMUM OF 6" FROM OUTSIDE OF PIPE TO EXISTING UTILITY POLE.
- CONTRACTOR SHALL REMOVE, PROTECT, AND REPLACE (IF DAMAGED) ANY SIGNS AS NEEDED DURING THE DURATION OF CONSTRUCTION.
- CONTRACTOR SHALL REMOVE AND REPLACE ANY MAILBOXES AS NEEDED FOR CONSTRUCTION ON UTILITY. MAIL SERVICES MUST BE MAINTAINED THROUGHOUT THE DURATION OF CONSTRUCTION. ALSO, OFFSITE CONSTRUCTION SHALL NOT INTERFERE WITH TRASH PICKUP.
- ANY PAVEMENT THAT IS DAMAGED DURING CONSTRUCTION OF UTILITIES, CONTRACTOR IS REQUIRED A FULL WIDTH OVERLAY, PLUS 50' IN BOTH DIRECTIONS.
- CONTRACTOR TO PROVIDE MIN. 6" DISTANCE FROM UTILITY INSTALLATION FROM EDGE OF PAVEMENT AT ALL TIME. WHERE UTILITIES CANT MEET REQUIREMENTS, THE SHOULDER SHALL BE REBUILT VIA TWO LIFTS OF LIMEROCK.
- ROSES BLUFF ROW SHALL BE VIDEOED PRIOR TO CONSTRUCTION COMMENCEMENT.

Connelly & Wicker Inc.
 Planning • Engineering • Landscape Architecture
 10060 Skimmer Lake Drive, Suite 500 Jacksonville, Florida 32246
 (904) 265-3030 FAX: (904) 265-3031 www.connelly-wicker.com
 Florida Registry 3650 L.A. Number: LC260000311

No.	Date	Revision

SITE PLAN

SANDY BLUFF SUBDIVISION

PREPARED FOR
SANDY BLUFF DEVELOPMENT INC

Project No.: 21-01-0057
 Designed: MEL
 Date: 10/25/23

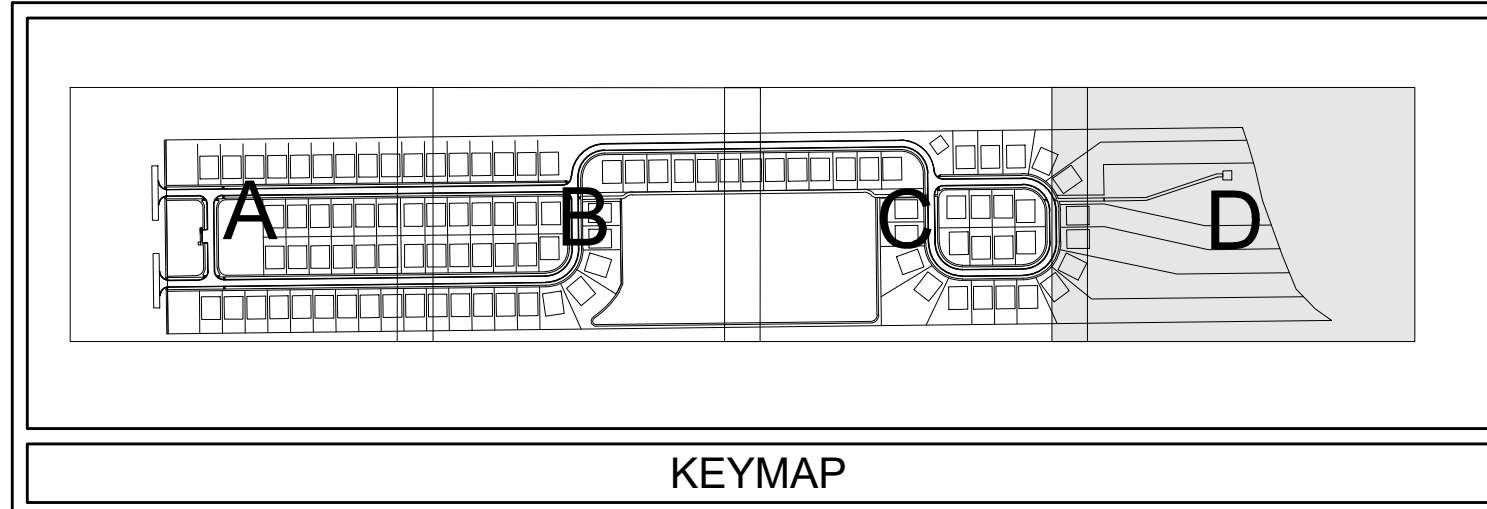
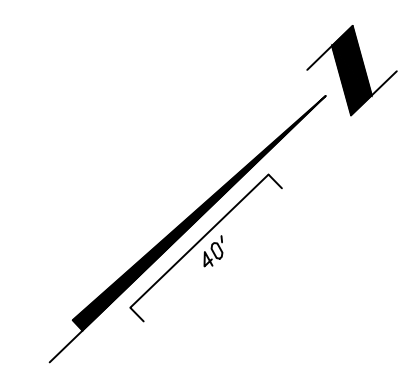
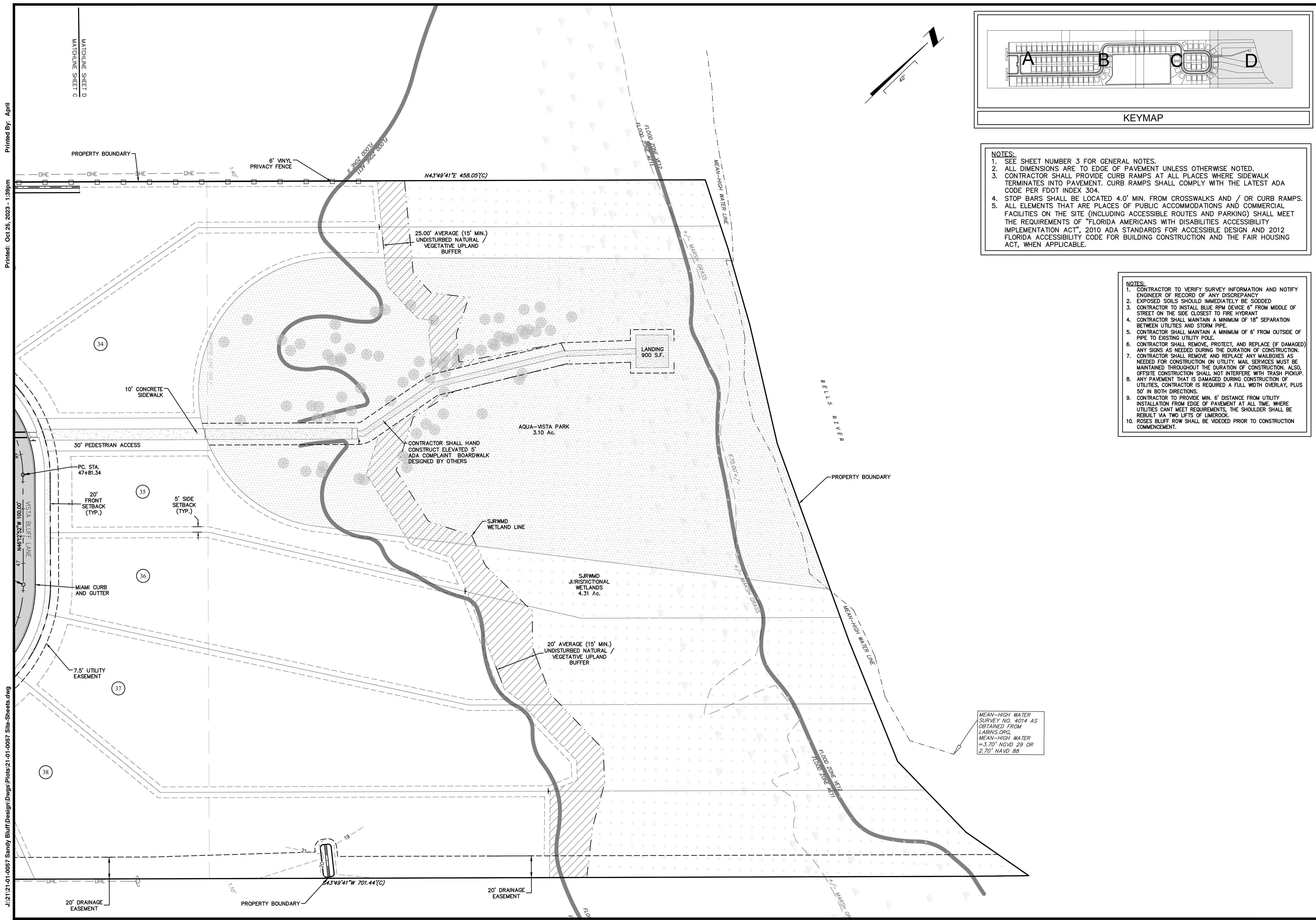
Drawn: ANB
 Scale: 1"=40'

Sheet **7C**

THIS DRAWING IS THE PROPERTY OF CONNELLY & WICKER INC. AND IS NOT TO BE REPRODUCED OR COPIED IN WHOLE OR IN PART. IT IS NOT TO BE USED ON ANY OTHER PROJECT AND IS TO BE RETURNED ON REQUEST.

Printed: Oct 25, 2023 - 1:39pm

J:\21\21-01-0057 Sandy Bluff\Design\Drawings\Plots\21-01-0057 Site-Sheets.dwg



- NOTES:
1. SEE SHEET NUMBER 3 FOR GENERAL NOTES.
 2. ALL DIMENSIONS ARE TO EDGE OF PAVEMENT UNLESS OTHERWISE NOTED.
 3. CONTRACTOR SHALL PROVIDE CURB RAMPS AT ALL PLACES WHERE SIDEWALK TERMINATES INTO PAVEMENT. CURB RAMPS SHALL COMPLY WITH THE LATEST ADA CODE PER FDOT INDEX 304.
 4. STOP BARS SHALL BE LOCATED 4.0' MIN. FROM CROSSWALKS AND / OR CURB RAMPS.
 5. ALL ELEMENTS THAT ARE PLACES OF PUBLIC ACCOMMODATIONS AND COMMERCIAL FACILITIES ON THE SITE (INCLUDING ACCESSIBLE ROUTES AND PARKING) SHALL MEET THE REQUIREMENTS OF "FLORIDA AMERICANS WITH DISABILITIES ACCESSIBILITY IMPLEMENTATION ACT", 2010 ADA STANDARDS FOR ACCESSIBLE DESIGN AND 2012 FLORIDA ACCESSIBILITY CODE FOR BUILDING CONSTRUCTION AND THE FAIR HOUSING ACT, WHEN APPLICABLE.

- NOTES:
1. CONTRACTOR TO VERIFY SURVEY INFORMATION AND NOTIFY ENGINEER OF RECORD OF ANY DISCREPANCY
 2. EXPOSED SOILS SHOULD IMMEDIATELY BE SOODED
 3. CONTRACTOR TO INSTALL BLUE RPM DEVICE 6" FROM MIDDLE OF STREET ON THE SIDE CLOSEST TO FIRE HYDRANT
 4. CONTRACTOR SHALL MAINTAIN A MINIMUM OF 18" SEPARATION BETWEEN UTILITIES AND STORM PIPE.
 5. CONTRACTOR SHALL MAINTAIN A MINIMUM OF 6' FROM OUTSIDE OF PIPE TO EXISTING UTILITY POLE.
 6. CONTRACTOR SHALL REMOVE, PROTECT, AND REPLACE (IF DAMAGED) ANY SIGNS AS NEEDED DURING THE DURATION OF CONSTRUCTION.
 7. CONTRACTOR SHALL REMOVE AND REPLACE ANY MAILBOXES AS NEEDED FOR CONSTRUCTION ON UTILITY. MAIL SERVICES MUST BE MAINTAINED THROUGHOUT THE DURATION OF CONSTRUCTION. ALSO, OFFSITE CONSTRUCTION SHALL NOT INTERFERE WITH TRASH PICKUP.
 8. ANY PAVEMENT THAT IS DAMAGED DURING CONSTRUCTION OF UTILITIES, CONTRACTOR IS REQUIRED A FULL WIDTH OVERLAY, PLUS 50' IN BOTH DIRECTIONS.
 9. CONTRACTOR TO PROVIDE MIN. 6" DISTANCE FROM UTILITY INSTALLATION FROM EDGE OF PAVEMENT AT ALL TIME. WHERE UTILITIES CANT MEET REQUIREMENTS, THE SHOULDER SHALL BE REBUILT VIA TWO LIFTS OF LIMEPOCK.
 10. ROSES BLUFF ROW SHALL BE VIDEOED PRIOR TO CONSTRUCTION COMMENCEMENT.

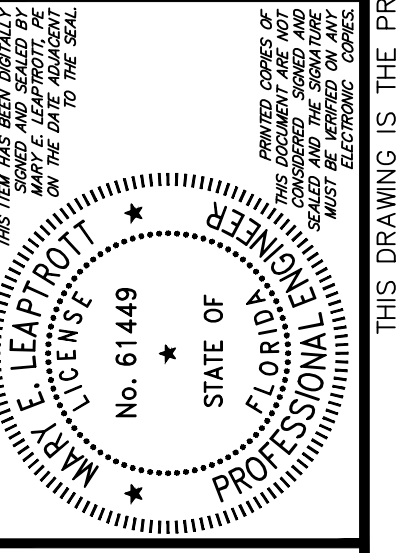
Connelly & Wicker Inc.
 Planning · Engineering · Landscape Architecture
 10060 Skimmer Lake Drive, Suite 500 Jacksonville, Florida 32246
 (904) 265-3030 FAX: (904) 265-3031 www.cwinc.com
 Florida Registry 5650 L.A. Number: LC26000311

No.	Date	Revision

SITE PLAN

SANDY BLUFF SUBDIVISION

PREPARED FOR
SANDY BLUFF DEVELOPMENT INC



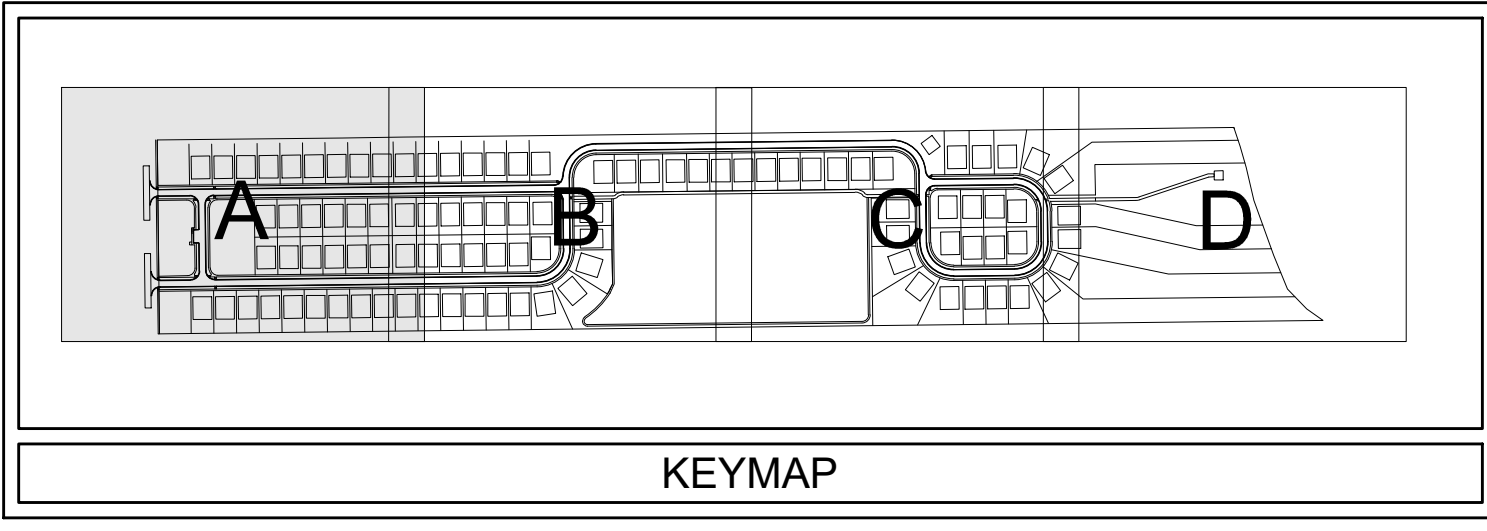
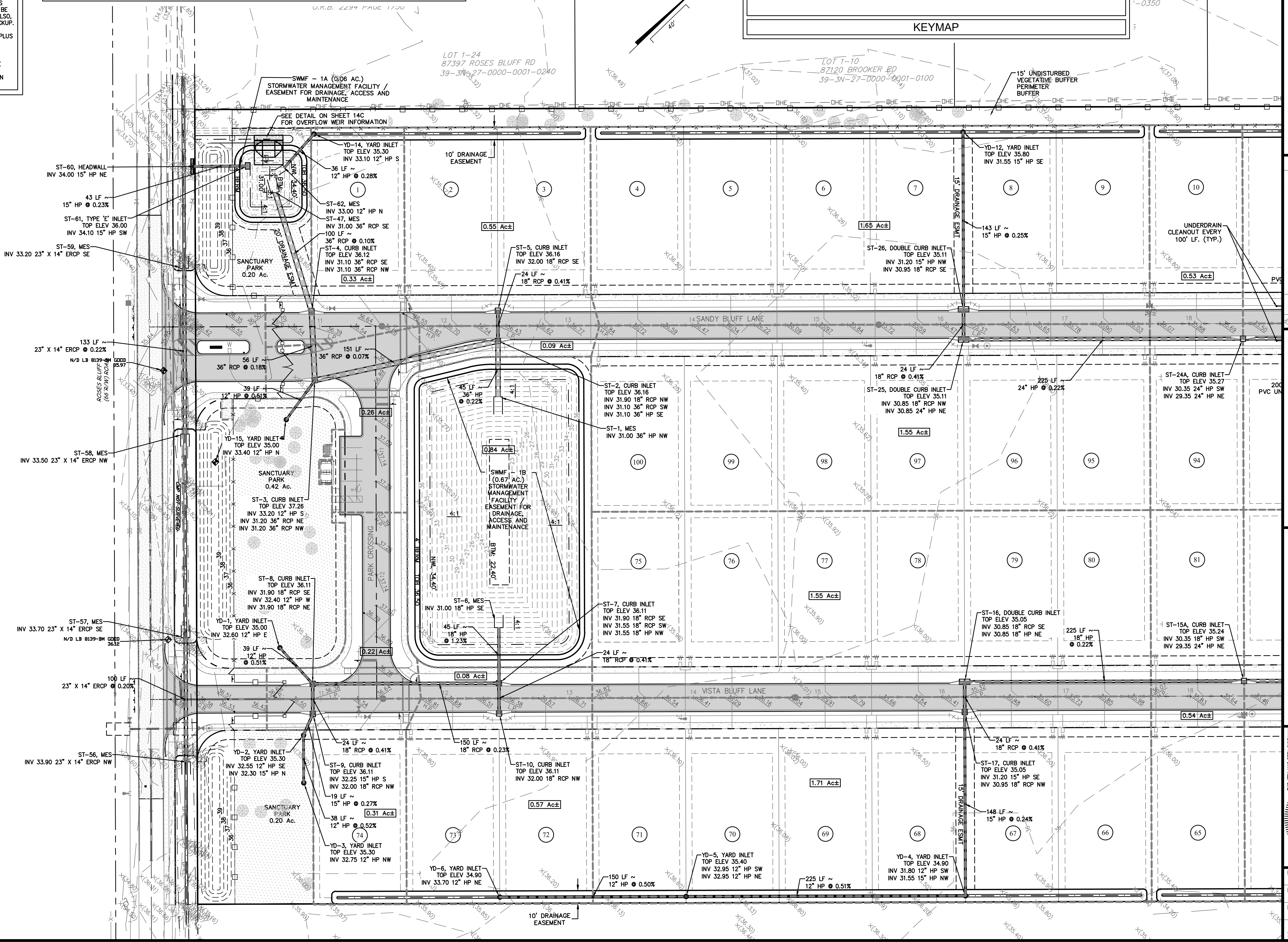
Project No.: 21-01-0057
 Designed: MEL Drawn: ANB
 Date: 10/25/23 Scale: 1"=40'
 Sheet 7D

THIS DRAWING IS THE PROPERTY OF CONNELLY & WICKER INC. AND IS NOT TO BE REPRODUCED OR COPIED IN WHOLE OR IN PART. IT IS NOT TO BE USED ON ANY OTHER PROJECT AND IS TO BE RETURNED ON REQUEST.

NOTES:
 1. CONTRACTOR TO VERIFY SURVEY INFORMATION AND NOTIFY ENGINEER OF RECORD OF ANY DISCREPANCY.
 2. EXPOSED SOILS SHOULD IMMEDIATELY BE SOODED.
 3. CONTRACTOR TO INSTALL BLUE RPM DEVICE 6" FROM MIDDLE OF STREET ON THE SIDE CLOSEST TO FIRE HYDRANT.
 4. CONTRACTOR SHALL MAINTAIN A MINIMUM OF 18" SEPARATION BETWEEN UTILITIES AND STORM PIPE.
 5. CONTRACTOR SHALL MAINTAIN A MINIMUM OF 6' FROM OUTSIDE OF PIPE TO EXISTING UTILITY POLE.
 6. CONTRACTOR SHALL REMOVE, PROTECT, AND REPLACE (IF DAMAGED) ANY SIGNS AS NEEDED DURING THE DURATION OF CONSTRUCTION. CONTRACTOR SHALL REMOVE AND REPLACE ANY MAILBOXES AS NEEDED FOR CONSTRUCTION ON UTILITY. MAIL SERVICES MUST BE MAINTAINED THROUGHOUT THE DURATION OF CONSTRUCTION. ALSO, OFFSITE CONSTRUCTION SHALL NOT INTERFERE WITH TRASH PICKUP.
 7. ANY PAVEMENT THAT IS DAMAGED DURING CONSTRUCTION OF UTILITIES, CONTRACTOR IS REQUIRED A FULL WIDTH OVERLAY, PLUS 50' IN BOTH DIRECTIONS.
 8. CONTRACTOR TO PROVIDE MIN. 6' DISTANCE FROM UTILITY INSTALLATION FROM EDGE OF PAVEMENT AT ALL TIME. WHERE UTILITIES CAN'T MEET REQUIREMENTS, THE SHOULDER SHALL BE REBUILT VIA TWO LIFTS OF LIMEROCK.
 9. ROSES BLUFF ROW SHALL BE VIDEOED PRIOR TO CONSTRUCTION COMMENCEMENT.

NOTES:
 1. SEE SHEET NUMBER 3 FOR GENERAL NOTES.
 2. CONTRACTOR SHALL NOT SCALE PLAN BUT SHALL REFER TO SITE PLAN FOR ALL LINE DIMENSIONS.
 3. THE CONTRACTOR SHALL PROVIDE 20' MIN. UNDERDRAIN STUBOUTS ON EACH SIDE OF ALL STORM INLETS. FINAL DETERMINATION OF LIMITS OF UNDERDRAIN WILL BE MADE BY GEOTECHNICAL ENGINEER BASED ON TEST HOLE OBSERVATIONS DURING ROADWAY CONSTRUCTION.
 4. ALL PIPE LENGTHS SHOWN HEREON ARE APPROXIMATE AND ARE TAKEN FROM THE APPROXIMATE CENTER OF GRATE/RING AND COVER TO THE BACK OF THE MITERED END SECTIONS.
 5. REFER TO SHEET 8D FOR DRAINAGE STRUCTURE TABLE.

SEE SHEET 8D FOR PAVING AND DRAINAGE PLAN NOTES.

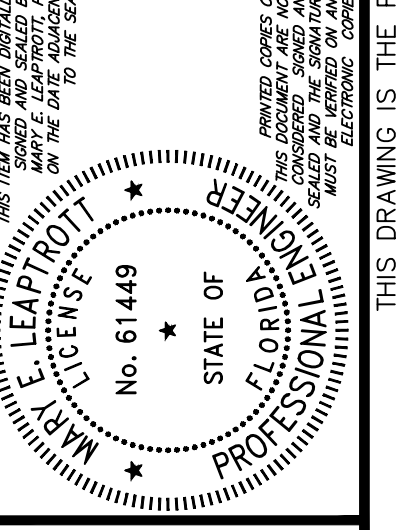


Connelly & Wicker Inc.
 Planning • Engineering • Landscape Architecture
 10060 Skimmer Lake Drive, Suite 500 Jacksonville, Florida 32246
 (904) 265-3030 FAX: (904) 265-3031 www.connelly-wicker.com
 Florida Registry 3650 L.A. Number: LC26000311

No.	Date	Revision

PAVING AND DRAINAGE PLAN

SANDY BLUFF SUBDIVISION
 PREPARED FOR SANDY BLUFF DEVELOPMENT INC



Project No.: 21-01-0057
 Designed: MEL Drawn: ANB
 Date: 10/25/23 Scale: 1"=40'
 Sheet 8A

THIS DRAWING IS THE PROPERTY OF CONNELLY & WICKER INC. AND IS NOT TO BE REPRODUCED OR COPIED IN WHOLE OR IN PART. IT IS NOT TO BE USED ON ANY OTHER PROJECT AND IS TO BE RETURNED ON REQUEST.

Printed: Oct 25, 2023 - 1:39pm

J:\21-01-0057 Sandy Bluff\Design\Drawings\Plots\21-01-0057 PltSheets.dwg

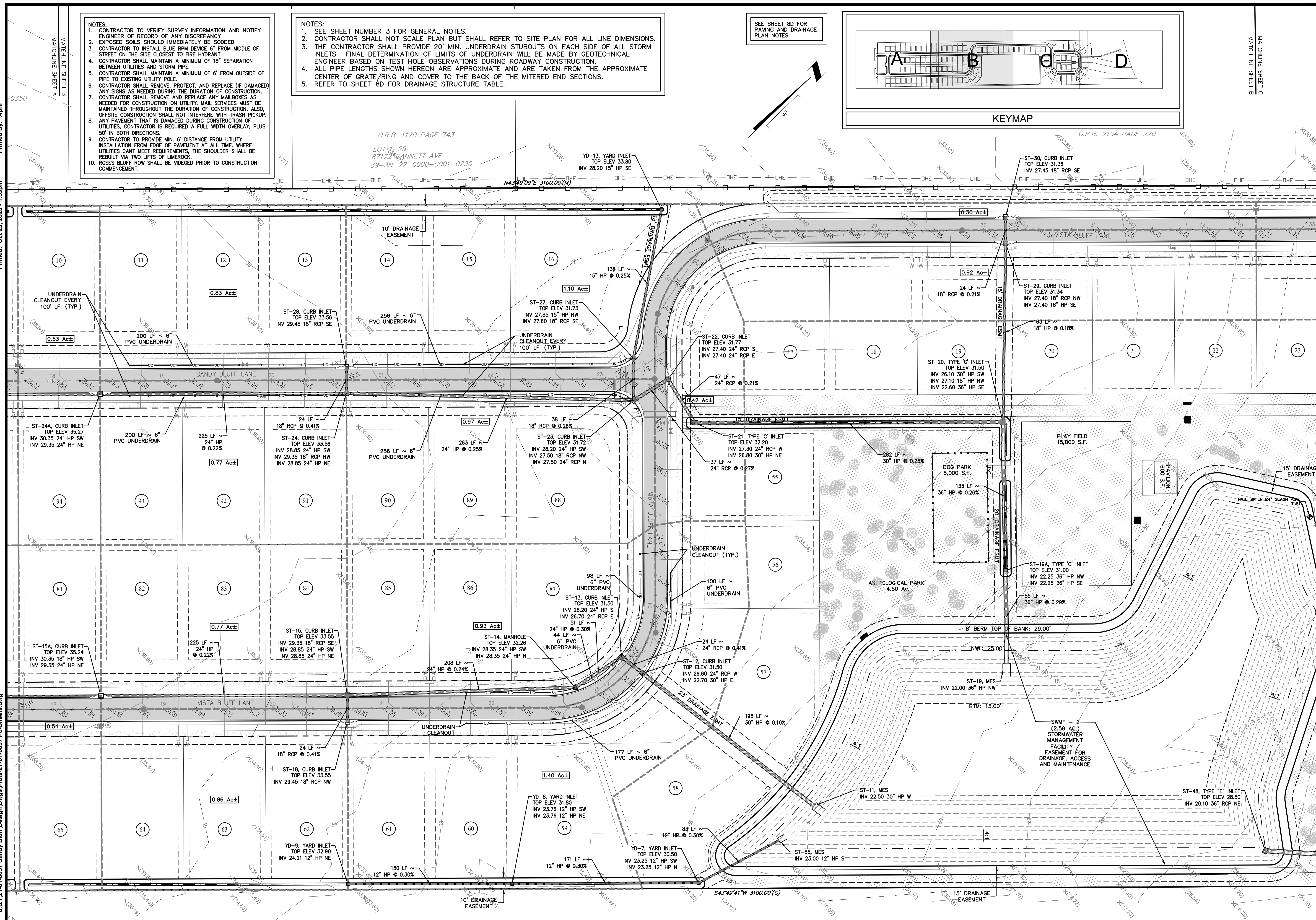
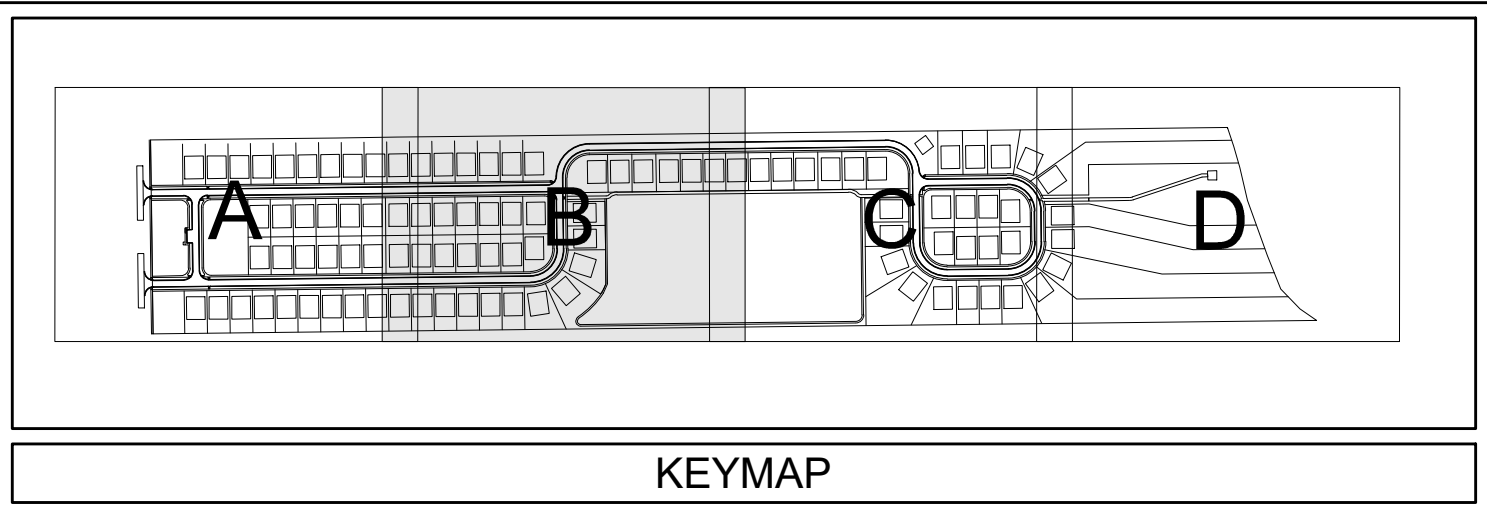
NOTES:

- CONTRACTOR TO VERIFY SURVEY INFORMATION AND NOTIFY ENGINEER OF RECORD OF ANY DISCREPANCY
- EXPOSED SOILS SHOULD IMMEDIATELY BE SOODED
- CONTRACTOR TO INSTALL BLUE RPM DEVICE 6" FROM MIDDLE OF STREET ON THE SIDE CLOSEST TO FIRE HYDRANT
- CONTRACTOR SHALL MAINTAIN A MINIMUM OF 18" SEPARATION BETWEEN UTILITIES AND STORM PIPE.
- CONTRACTOR SHALL MAINTAIN A MINIMUM OF 6' FROM OUTSIDE OF PIPE TO EXISTING UTILITY POLE
- CONTRACTOR SHALL REMOVE, PROTECT, AND REPLACE (IF DAMAGED) ANY SIGNS AS NEEDED DURING THE DURATION OF CONSTRUCTION.
- CONTRACTOR SHALL REMOVE AND REPLACE ANY MAILBOXES AS NEEDED FOR CONSTRUCTION ON UTILITY. MAIL SERVICES MUST BE MAINTAINED THROUGHOUT THE DURATION OF CONSTRUCTION. ALSO, OFFSITE CONSTRUCTION SHALL NOT INTERFERE WITH TRASH PICKUP.
- ANY PAVEMENT THAT IS DAMAGED DURING CONSTRUCTION OF UTILITIES, CONTRACTOR IS REQUIRED A FULL WIDTH OVERLAY, PLUS 50' IN BOTH DIRECTIONS.
- CONTRACTOR TO PROVIDE MIN. 6' DISTANCE FROM UTILITY INSTALLATION FROM EDGE OF PAVEMENT AT ALL TIME. WHERE UTILITIES CANT MEET REQUIREMENTS, THE SHOULDER SHALL BE REBUILT VIA TWO LIFTS OF LIME ROCK.
- ROSES BLUFF ROW SHALL BE VIDEOED PRIOR TO CONSTRUCTION COMMENCEMENT.

NOTES:

- SEE SHEET NUMBER 3 FOR GENERAL NOTES.
- CONTRACTOR SHALL NOT SCALE PLAN BUT SHALL REFER TO SITE PLAN FOR ALL LINE DIMENSIONS.
- THE CONTRACTOR SHALL PROVIDE 20' MIN. UNDERDRAIN STUBOUTS ON EACH SIDE OF ALL STORM INLETS. FINAL DETERMINATION OF LIMITS OF UNDERDRAIN WILL BE MADE BY GEOTECHNICAL ENGINEER BASED ON TEST HOLE OBSERVATIONS DURING ROADWAY CONSTRUCTION.
- ALL PIPE LENGTHS SHOWN HEREON ARE APPROXIMATE AND ARE TAKEN FROM THE APPROXIMATE CENTER OF GRATE/RING AND COVER TO THE BACK OF THE MITERED END SECTIONS.
- REFER TO SHEET 8D FOR DRAINAGE STRUCTURE TABLE.

SEE SHEET 8D FOR PAVING AND DRAINAGE PLAN NOTES.

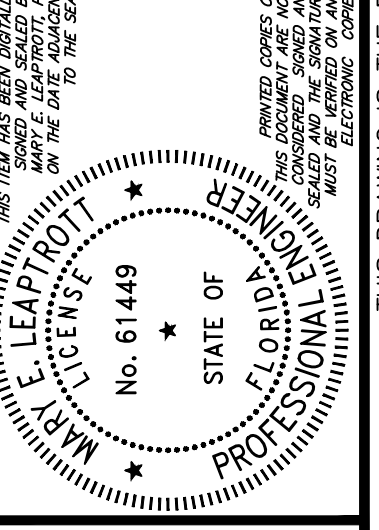


OW Connelly & Wicker Inc.
 Planning • Engineering • Landscape Architecture
 10060 Skimmer Lake Drive, Suite 500 Jacksonville, Florida 32246
 (904) 265-3030 FAX: (904) 265-3031 www.owcon.com
 Florida Registry 5650 L.A. Number: LC26000311

PAVING AND DRAINAGE PLAN

SANDY BLUFF SUBDIVISION

PREPARED FOR
SANDY BLUFF DEVELOPMENT INC



Project No.: 21-01-0057
 Designed: MEL
 Date: 10/25/23
 Drawn: ANB
 Scale: 1"=40'
 Sheet 8B

THIS DRAWING IS THE PROPERTY OF CONNELLY & WICKER INC. AND IS NOT TO BE REPRODUCED OR COPIED IN WHOLE OR IN PART. IT IS NOT TO BE USED ON ANY OTHER PROJECT AND IS TO BE RETURNED ON REQUEST.

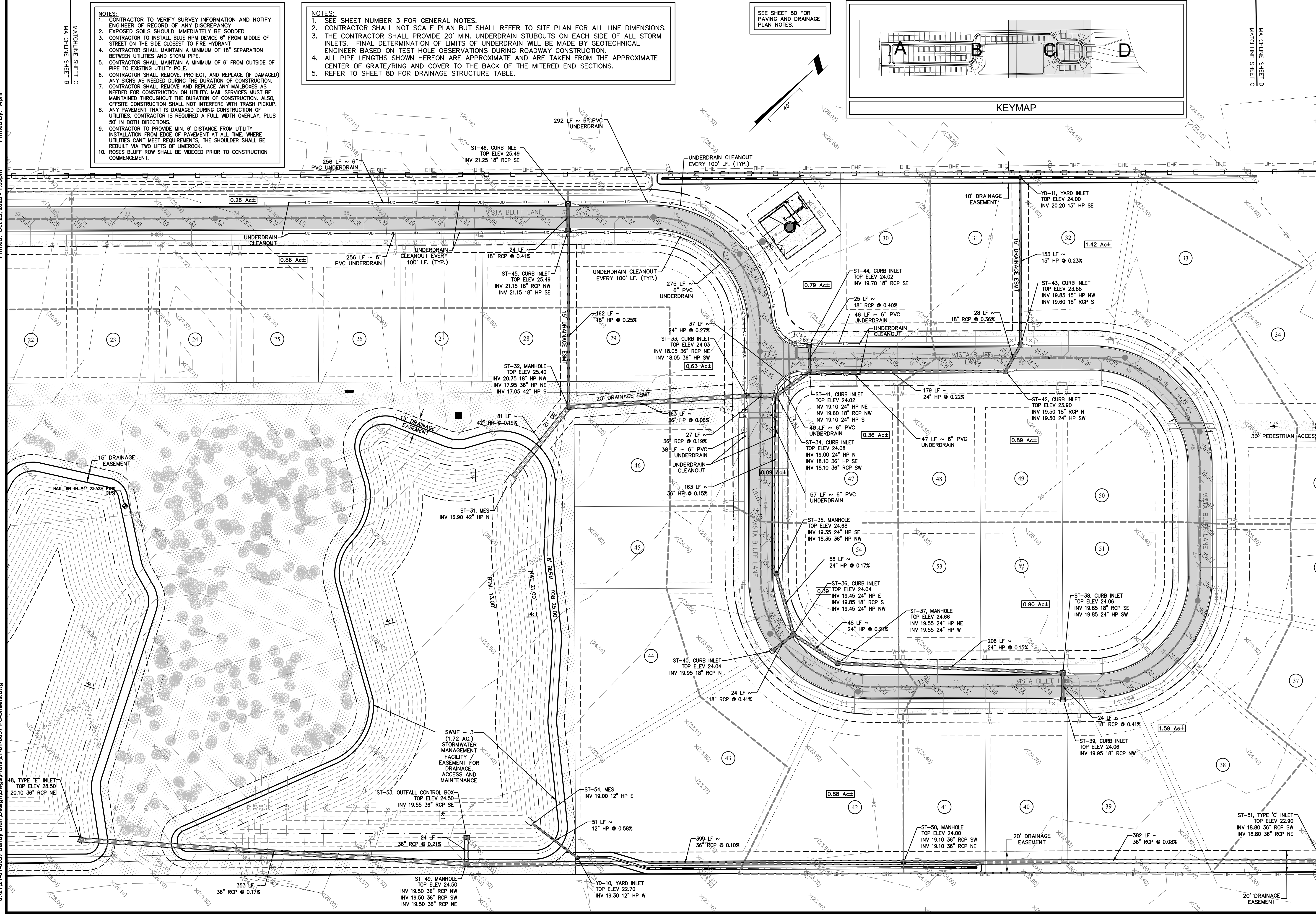
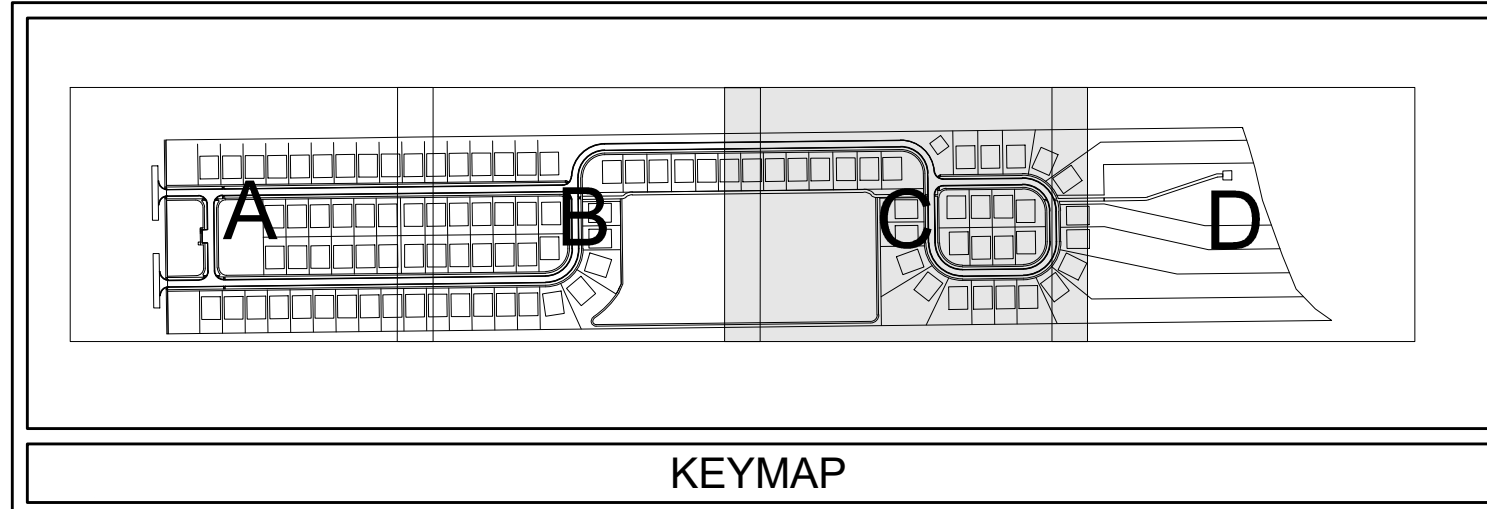
NOTES:

1. CONTRACTOR TO VERIFY SURVEY INFORMATION AND NOTIFY ENGINEER OF RECORD OF ANY DISCREPANCY
2. EXPOSED SOILS SHOULD IMMEDIATELY BE SODED
3. CONTRACTOR TO INSTALL BLUE RPM DEVICE 6" FROM MIDDLE OF STREET ON THE SIDE CLOSEST TO FIRE HYDRANT
4. CONTRACTOR SHALL MAINTAIN A MINIMUM OF 18" SEPARATION BETWEEN UTILITIES AND STORM PIPE.
5. CONTRACTOR SHALL MAINTAIN A MINIMUM OF 6" FROM OUTSIDE OF PIPE TO EXISTING UTILITY POLE.
6. CONTRACTOR SHALL REMOVE, PROTECT, AND REPLACE (IF DAMAGED) ANY SIGNS AS NEEDED DURING THE DURATION OF CONSTRUCTION.
7. CONTRACTOR SHALL REMOVE AND REPLACE ANY MALBOXES AS NEEDED FOR CONSTRUCTION ON UTILITY. MAIL SERVICES MUST BE MAINTAINED THROUGHOUT THE DURATION OF CONSTRUCTION. ALSO, OFFSITE CONSTRUCTION SHALL NOT INTERFERE WITH TRASH PICKUP.
8. ANY PAYMENT THAT IS DAMAGED DURING CONSTRUCTION OF UTILITIES, CONTRACTOR IS REQUIRED A FULL WIDTH OVERLAY, PLUS 50' IN BOTH DIRECTIONS.
9. CONTRACTOR TO PROVIDE MIN. 6" DISTANCE FROM UTILITY INSTALLATION FROM EDGE OF PAVEMENT AT ALL TIME. WHERE UTILITIES CAN'T MEET REQUIREMENTS, THE SHOULDER SHALL BE REBUILT VIA TWO LIFTS OF LIMEROCK.
10. ROSES BLUFF ROW SHALL BE VIDEOED PRIOR TO CONSTRUCTION COMMENCEMENT.

NOTES:

1. SEE SHEET NUMBER 3 FOR GENERAL NOTES.
2. CONTRACTOR SHALL NOT SCALE PLAN BUT SHALL REFER TO SITE PLAN FOR ALL LINE DIMENSIONS.
3. THE CONTRACTOR SHALL PROVIDE 20' MIN. UNDERDRAIN STUBOUTS ON EACH SIDE OF ALL STORM INLETS. FINAL DETERMINATION OF LIMITS OF UNDERDRAIN WILL BE MADE BY GEOTECHNICAL ENGINEER BASED ON TEST HOLE OBSERVATIONS DURING ROADWAY CONSTRUCTION.
4. ALL PIPE LENGTHS SHOWN HEREON ARE APPROXIMATE AND ARE TAKEN FROM THE APPROXIMATE CENTER OF GRATE/RING AND COVER TO THE BACK OF THE MITERED END SECTIONS.
5. REFER TO SHEET 8D FOR DRAINAGE STRUCTURE TABLE.

SEE SHEET 8D FOR PAVING AND DRAINAGE PLAN NOTES.

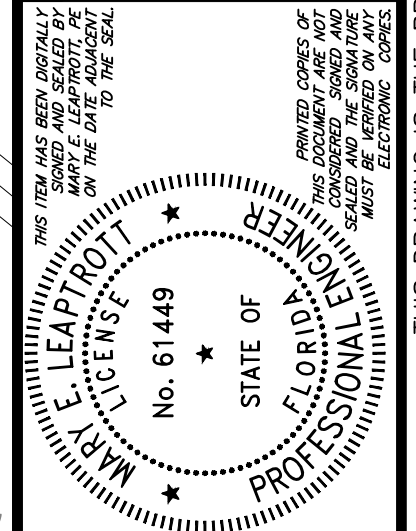


Connelly & Wicker Inc.
 Planning • Engineering • Landscape Architecture
 10060 Skimmer Lake Drive, Suite 500 Jacksonville, Florida 32246
 (904) 265-3030 FAX: (904) 265-3031 www.connelly-wicker.com
 Florida Registry 5650 L.A. Number: LC26000311

No.	Date	Revision

PAVING AND DRAINAGE PLAN

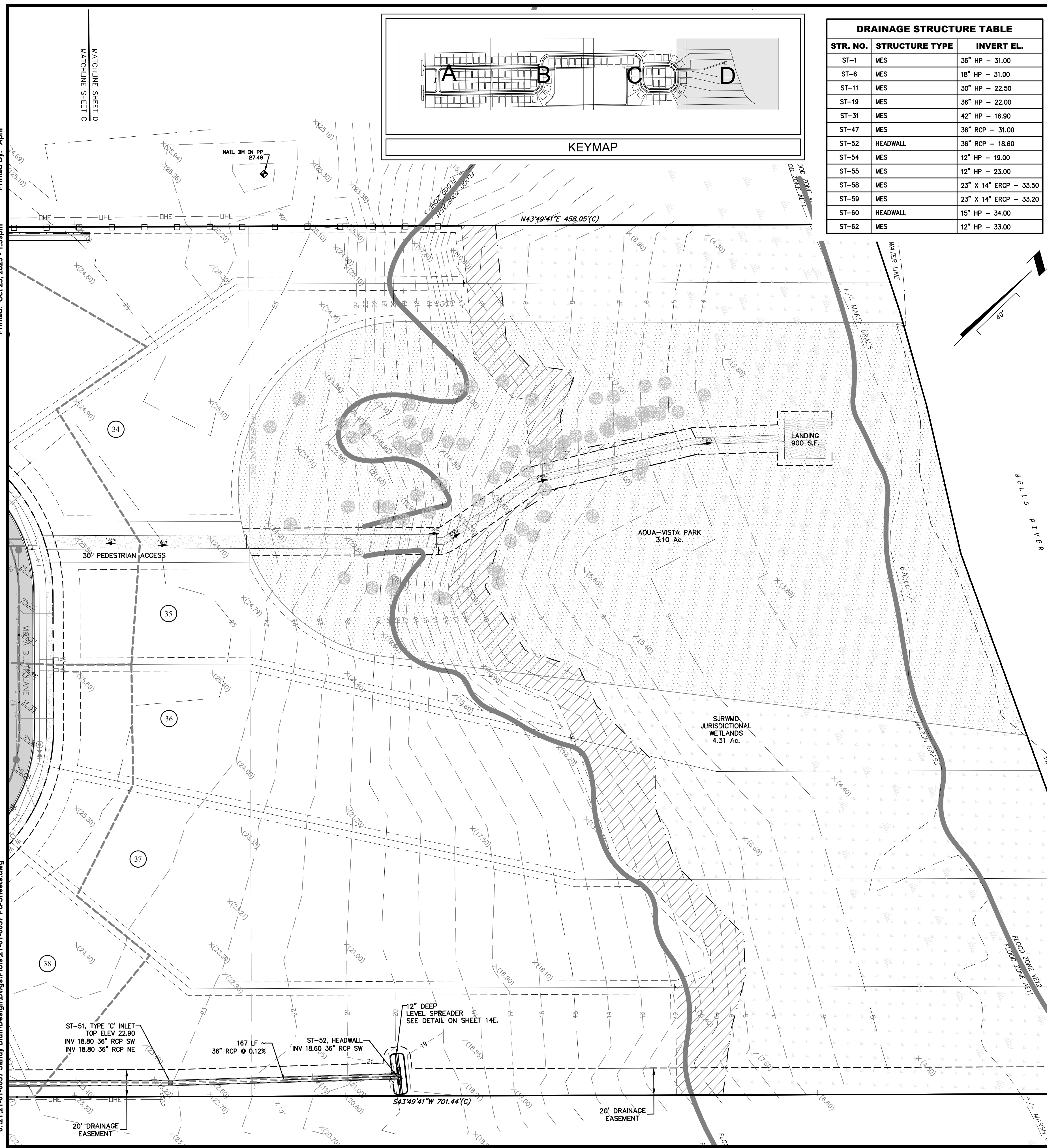
SANDY BLUFF SUBDIVISION
 PREPARED FOR
SANDY BLUFF DEVELOPMENT INC



Project No.: 21-01-0057
 Designed: MEL Drawn: ANB
 Date: 10/25/23 Scale: 1"=40'
 Sheet 8C

THIS DRAWING IS THE PROPERTY OF CONNELLY & WICKER INC. AND IS NOT TO BE REPRODUCED OR COPIED IN WHOLE OR IN PART. IT IS NOT TO BE USED ON ANY OTHER PROJECT AND IS TO BE RETURNED ON REQUEST.

Printed: Oct 25, 2023 - 1:39pm
 Printed By: April
 J:\21-01-0057 Sandy Bluff\Design\Drawings\Plots\21-01-0057 Plt-Sheets.dwg



DRAINAGE STRUCTURE TABLE		
STR. NO.	STRUCTURE TYPE	INVERT EL.
ST-1	MES	36" HP - 31.00
ST-6	MES	18" HP - 31.00
ST-11	MES	30" HP - 22.50
ST-19	MES	36" HP - 22.00
ST-31	MES	42" HP - 16.90
ST-47	MES	36" RCP - 31.00
ST-52	HEADWALL	36" RCP - 18.60
ST-54	MES	12" HP - 19.00
ST-55	MES	12" HP - 23.00
ST-58	MES	23" X 14" ERCP - 33.50
ST-59	MES	23" X 14" ERCP - 33.20
ST-60	HEADWALL	15" HP - 34.00
ST-62	MES	12" HP - 33.00

DRAINAGE STRUCTURE TABLE			
STR. NO.	STRUCTURE TYPE	TOP/GRATE EL.	INVERT EL.
ST-2	CURB INLET	36.16	RCP - 31.90 (NW) RCP - 31.10 (SW) HP - 31.10 (SE)
ST-3	CURB INLET	37.26	HP - 33.20 (S) RCP - 31.20 (NE) RCP - 31.20 (NW)
ST-4	CURB INLET	36.12	RCP - 31.10 (SE) RCP - 31.10 (NW)
ST-5	CURB INLET	36.16	RCP - 32.00 (SE)
ST-7	CURB INLET	36.11	RCP - 31.90 (SE) RCP - 31.55 (SW) HP - 31.55 (NW)
ST-8	CURB INLET	36.11	RCP - 31.90 (SE) HP - 32.40 (W) RCP - 31.90 (NE)
ST-9	CURB INLET	36.11	HP - 32.25 (S) RCP - 32.00 (NW)
ST-10	CURB INLET	36.11	RCP - 32.00 (NW)
ST-12	CURB INLET	31.50	RCP - 26.60 (W) HP - 22.70 (E)
ST-13	CURB INLET	31.50	HP - 28.20 (S) RCP - 26.70 (E)
ST-14	MANHOLE	32.26	HP - 28.35 (SW) HP - 28.35 (N)
ST-15	CURB INLET	33.55	RCP - 29.35 (SE) HP - 28.85 (SW) HP - 28.85 (NE)
ST-16	DOUBLE CURB INLET	35.05	RCP - 30.85 (SE) HP - 30.85 (NE)
ST-17	CURB INLET	35.05	HP - 31.20 (SE) RCP - 30.95 (NW)
ST-18	CURB INLET	33.55	RCP - 29.45 (NW)
ST-19A	TYPE 'C' INLET	31.00	HP - 22.25 (NW) HP - 22.25 (SE)
ST-20	TYPE 'C' INLET	31.50	HP - 26.10 (SW) HP - 27.10 (NW) HP - 22.60 (SE)
ST-21	TYPE 'C' INLET	32.20	RCP - 27.30 (W) HP - 26.80 (NE)
ST-22	CURB INLET	31.77	RCP - 27.40 (S) RCP - 27.40 (E)
ST-23	CURB INLET	31.72	HP - 28.20 (SW) RCP - 27.50 (NW) RCP - 27.50 (N)
ST-24	CURB INLET	33.56	HP - 28.85 (SW) RCP - 29.35 (NW) HP - 28.85 (NE)
ST-24A	CURB INLET	35.27	HP - 30.35 (SW) HP - 29.35 (NE)
ST-25	DOUBLE CURB INLET	35.11	RCP - 30.85 (NW) HP - 30.85 (NE)
ST-26	DOUBLE CURB INLET	35.11	HP - 31.20 (NW) RCP - 30.95 (SE)
ST-27	CURB INLET	31.73	HP - 27.85 (NW) RCP - 27.60 (SE)
ST-28	CURB INLET	33.56	RCP - 29.45 (SE)
ST-29	CURB INLET	31.34	RCP - 27.40 (NW) HP - 27.40 (SE)
ST-30	CURB INLET	31.36	RCP - 27.45 (SE)
ST-32	MANHOLE	25.40	HP - 20.75 (NW) HP - 17.95 (NE) HP - 17.05 (S)
ST-33	CURB INLET	24.03	RCP - 18.05 (NE) HP - 18.05 (SW)
ST-34	CURB INLET	24.08	HP - 19.00 (N) HP - 18.10 (SE) RCP - 18.10 (SW)
ST-35	MANHOLE	24.68	HP - 19.35 (SE) HP - 18.35 (NW)

DRAINAGE STRUCTURE TABLE			
STR. NO.	STRUCTURE TYPE	TOP/GRATE EL.	INVERT EL.
ST-36	CURB INLET	24.04	HP - 19.45 (E) RCP - 19.85 (S) HP - 19.45 (NW)
ST-37	MANHOLE	24.66	HP - 19.55 (NE) HP - 19.55 (W)
ST-38	CURB INLET	24.06	RCP - 19.85 (SE) HP - 19.85 (SW)
ST-39	CURB INLET	24.06	RCP - 19.95 (NW)
ST-40	CURB INLET	24.04	RCP - 19.95 (N)
ST-41	CURB INLET	24.02	HP - 19.10 (NE) RCP - 19.60 (NW) HP - 19.10 (S)
ST-42	CURB INLET	23.90	RCP - 19.50 (N) HP - 19.50 (SW)
ST-43	CURB INLET	23.88	HP - 19.85 (NW) RCP - 19.60 (S)
ST-44	CURB INLET	24.02	RCP - 19.70 (SE)
ST-45	CURB INLET	25.49	RCP - 21.15 (NW) HP - 21.15 (SE)
ST-46	CURB INLET	25.49	RCP - 21.25 (SE)
ST-48	TYPE "E" INLET	28.50	RCP - 20.10 (NE)
ST-49	MANHOLE	24.50	RCP - 19.50 (NW) RCP - 19.50 (SW) RCP - 19.50 (NE)
ST-50	MANHOLE	24.00	RCP - 19.10 (SW) RCP - 19.10 (NE)
ST-51	TYPE 'C' INLET	22.90	RCP - 18.80 (SW) RCP - 18.80 (NE)
ST-53	OUTFALL CONTROL BOX	24.50	RCP - 19.55 (SE)
ST-61	TYPE 'E' INLET	36.00	HP - 34.10 (SW)
YD-1	YARD INLET	35.00	HP - 32.60 (E)
YD-2	YARD INLET	35.30	HP - 32.55 (SE) HP - 32.30 (N)
YD-3	YARD INLET	35.30	HP - 32.75 (NW)
YD-4	YARD INLET	34.90	HP - 31.80 (SW) HP - 31.55 (NW)
YD-5	YARD INLET	35.40	HP - 32.95 (SW) HP - 32.95 (NE)
YD-6	YARD INLET	34.90	HP - 33.70 (NE)
YD-7	YARD INLET	30.50	HP - 23.25 (SW) HP - 23.25 (N)
YD-8	YARD INLET	31.80	HP - 23.76 (SW) HP - 23.76 (NE)
YD-9	YARD INLET	32.90	HP - 24.21 (NE)
YD-10	YARD INLET	22.70	HP - 19.30 (W)
YD-11	YARD INLET	24.00	HP - 20.20 (SE)
YD-12	YARD INLET	35.80	HP - 31.55 (SE)
YD-13	YARD INLET	33.80	HP - 28.20 (SE)
YD-14	YARD INLET	35.30	HP - 33.10 (S)
YD-15	YARD INLET	35.00	HP - 33.40 (N)

- NOTES:**
- CONTRACTOR TO VERIFY SURVEY INFORMATION AND NOTIFY ENGINEER OF RECORD OF ANY DISCREPANCY.
 - EXPOSED SOILS SHOULD IMMEDIATELY BE SOODED.
 - CONTRACTOR TO INSTALL BLUE RPM DEVICE 6" FROM MIDDLE OF STREET ON THE SIDE CLOSEST TO FIRE HYDRANT.
 - CONTRACTOR SHALL MAINTAIN A MINIMUM OF 18" SEPARATION BETWEEN UTILITIES AND STORM PIPE.
 - CONTRACTOR SHALL MAINTAIN A MINIMUM OF 6" FROM OUTSIDE OF PIPE TO EXISTING UTILITY POLE.
 - CONTRACTOR SHALL REMOVE, PROTECT, AND REPLACE (IF DAMAGED) ANY SIGNS AS NEEDED DURING THE DURATION OF CONSTRUCTION.
 - CONTRACTOR SHALL REMOVE AND REPLACE ANY MAILBOXES AS NEEDED FOR CONSTRUCTION ON UTILITY. MAIL SERVICES MUST BE MAINTAINED THROUGHOUT THE DURATION OF CONSTRUCTION. ALSO, OFFSITE CONSTRUCTION SHALL NOT INTERFERE WITH TRASH PICKUP.
 - ANY PAVEMENT THAT IS DAMAGED DURING CONSTRUCTION OF UTILITIES, CONTRACTOR IS REQUIRED A FULL WIDTH OVERLAY, PLUS 50' IN BOTH DIRECTIONS.
 - CONTRACTOR TO PROVIDE MIN. 6" DISTANCE FROM UTILITY INSTALLATION FROM EDGE OF PAVEMENT AT ALL TIME. WHERE UTILITIES CAN'T MEET REQUIREMENTS, THE SHOULDER SHALL BE RESULT MA TWO LIFTS OF LIMEROCK.
 - ROSES BLUFF ROW SHALL BE VIDEOED PRIOR TO CONSTRUCTION COMMENCEMENT.

- NOTES:**
- SEE SHEET NUMBER 3 FOR GENERAL NOTES.
 - CONTRACTOR SHALL NOT SCALE PLAN BUT SHALL REFER TO SITE PLAN FOR ALL LINE DIMENSIONS.
 - THE CONTRACTOR SHALL PROVIDE 20' MIN. UNDERDRAIN STUBOUTS ON EACH SIDE OF ALL STORM INLETS. FINAL DETERMINATION OF LIMITS OF UNDERDRAIN WILL BE MADE BY GEOTECHNICAL ENGINEER BASED ON TEST HOLE OBSERVATIONS DURING ROADWAY CONSTRUCTION.
 - ALL PIPE LENGTHS SHOWN HEREON ARE APPROXIMATE AND ARE TAKEN FROM THE APPROXIMATE CENTER OF GRATE/RING AND COVER TO THE MITERED END SECTIONS.
 - REFER TO SHEET 8D FOR DRAINAGE STRUCTURE TABLE.

PAVING AND DRAINAGE PLAN

SANDY BLUFF SUBDIVISION

PREPARED FOR
SANDY BLUFF DEVELOPMENT INC

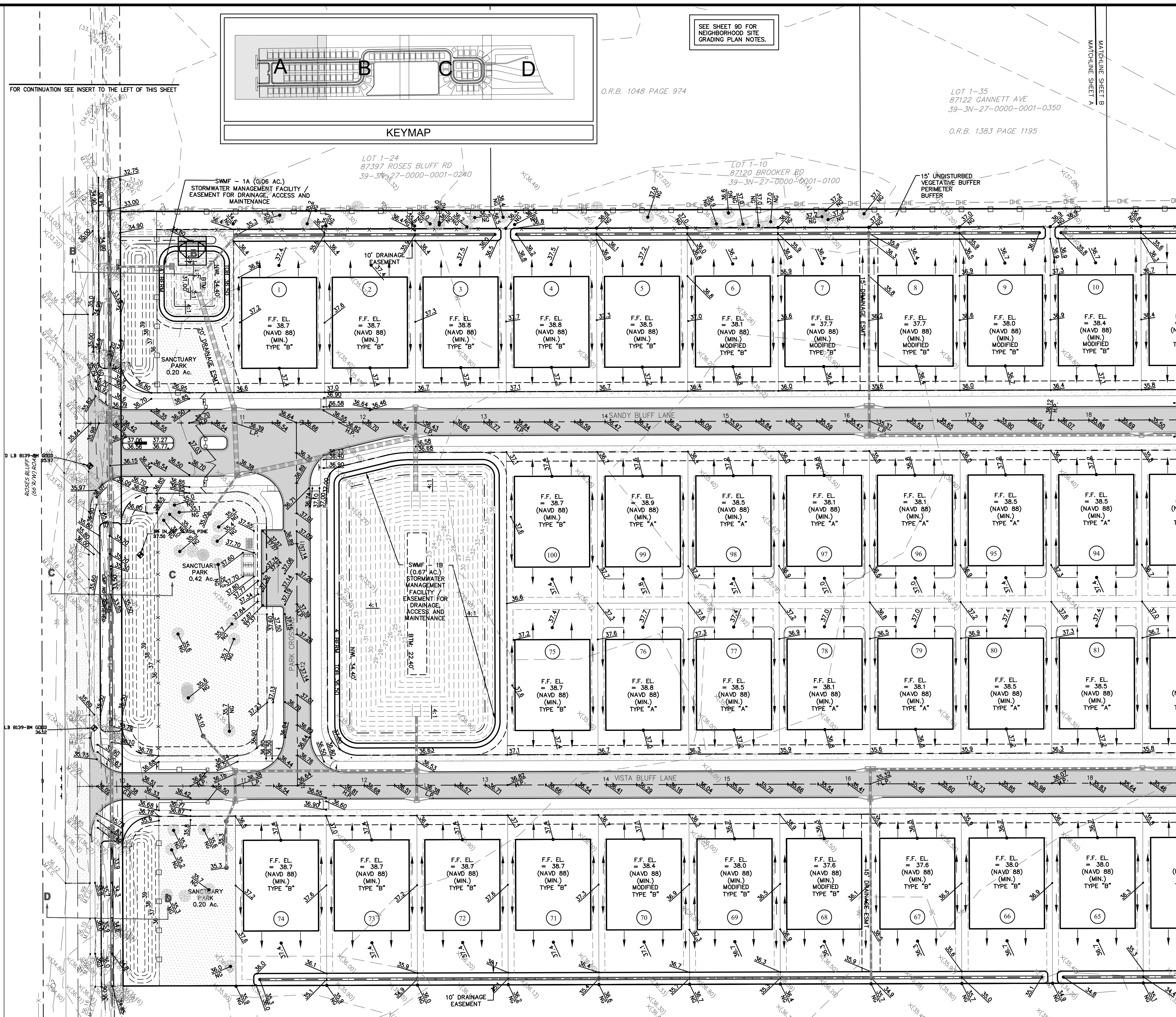
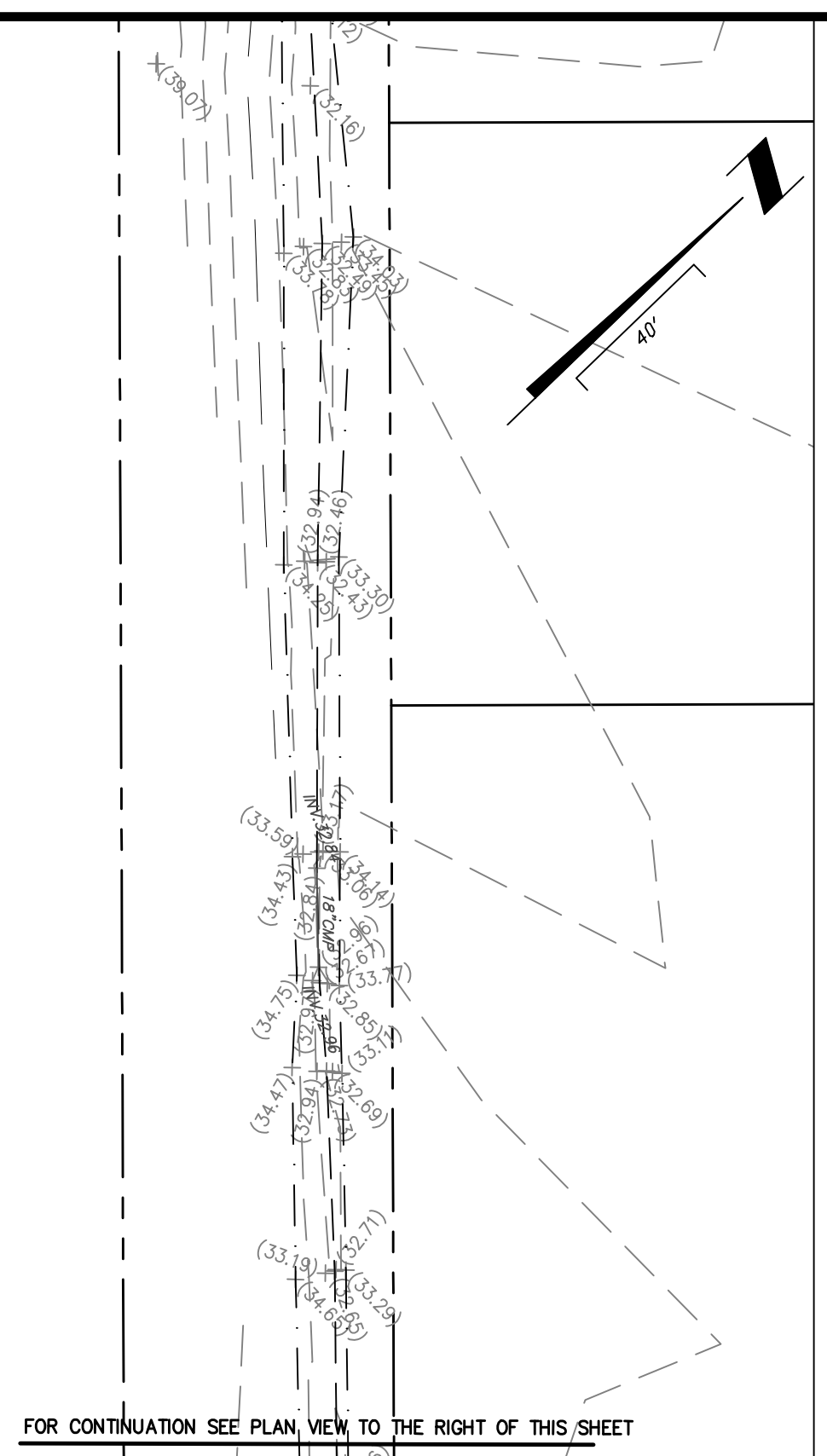
Project No.: 21-01-0057
 Designed: MEL
 Date: 10/25/23
 Drawn: ANB
 Scale: 1"=40'

Sheet **8D**

Professional Engineer
 State of Florida
 No. 61449
 License Expires 12/31/2024

THIS DRAWING IS THE PROPERTY OF CONNELLY & WICKER INC. AND IS NOT TO BE REPRODUCED OR COPIED IN WHOLE OR IN PART. IT IS NOT TO BE USED ON ANY OTHER PROJECT AND IS TO BE RETURNED ON REQUEST.

Connelly & Wicker Inc.
 Engineering • Landscape Architecture
 10060 Skimmer Lake Drive, Suite 500 Jacksonville, Florida 32246
 (904) 265-3030 FAX: (904) 265-3031 www.connelly-wicker.com
 Florida Registry 5650 L.A. Number: LC26000311



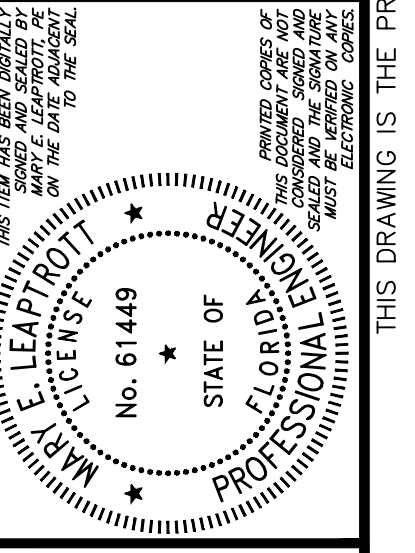
Connelly & Wicker Inc.
 Planning • Engineering • Landscape Architecture
 10060 Skimmer Lake Drive, Suite 500 Jacksonville, Florida 32246
 (904) 265-3030 FAX: (904) 265-3031 www.connelly-wicker.com
 Florida Registry 5650 L.A. Number: LC26000311

No.	Date	Revision

NEIGHBORHOOD SITE PLAN (GRADING PLAN)

SANDY BLUFF SUBDIVISION

PREPARED FOR
SANDY BLUFF DEVELOPMENT INC

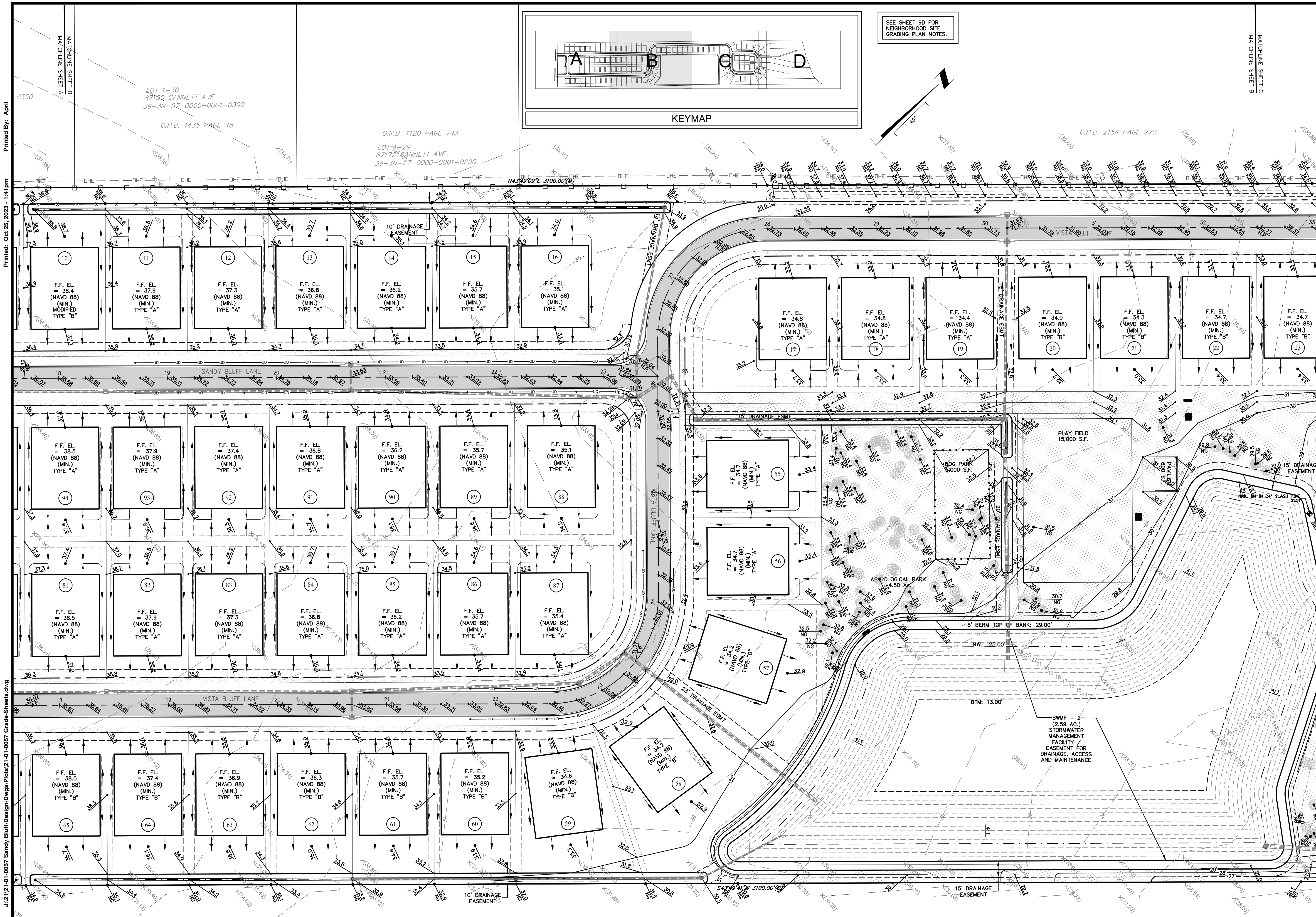


Project No.: 21-01-0057
 Designed: MEL
 Date: 10/25/23
 Drawn: ANB
 Scale: 1"=40'

THIS DRAWING IS THE PROPERTY OF CONNELLY & WICKER INC. AND IS NOT TO BE REPRODUCED OR COPIED IN WHOLE OR IN PART. IT IS NOT TO BE USED ON ANY OTHER PROJECT AND IS TO BE RETURNED ON REQUEST.

Printed: Oct 25, 2023 - 1:41 pm

J:\21-01-0057 Sandy Bluff Design\Drawings\Plots\21-01-0057 Grade-Sheets.dwg



Connelly & Wicker Inc.
 Planning • Engineering • Landscape Architecture
 10060 Skimmer Lake Drive, Suite 500 Jacksonville, Florida 32246
 (904) 265-3030 FAX: (904) 265-3031 www.cwainc.com
 Florida Registry 5650 L.A. Number: LC26000311

No.	Date	Revision

NEIGHBORHOOD SITE PLAN (GRADING PLAN)

SANDY BLUFF SUBDIVISION

PREPARED FOR
SANDY BLUFF DEVELOPMENT INC

Project No.: 21-01-0057
 Designed: MEL
 Date: 10/25/23

Drawn: ANB
 Scale: 1"=40'
 Sheet: 9B

Professional Engineer Seal: State of Florida, No. 61449, M. S. LEAP, P.E.

THIS DRAWING IS THE PROPERTY OF CONNELLY & WICKER INC. AND IS NOT TO BE REPRODUCED OR COPIED IN WHOLE OR IN PART. IT IS NOT TO BE USED ON ANY OTHER PROJECT AND IS TO BE RETURNED ON REQUEST.