



Nassau County Development Services
96161 Nassau Place
Yulee, FL 32097

STAFF REPORT
Board of County Commissioners
PL23-001 Hamlet at Wildlight
January 8, 2024

APPLICATION FOR FINAL PLAT APPROVAL

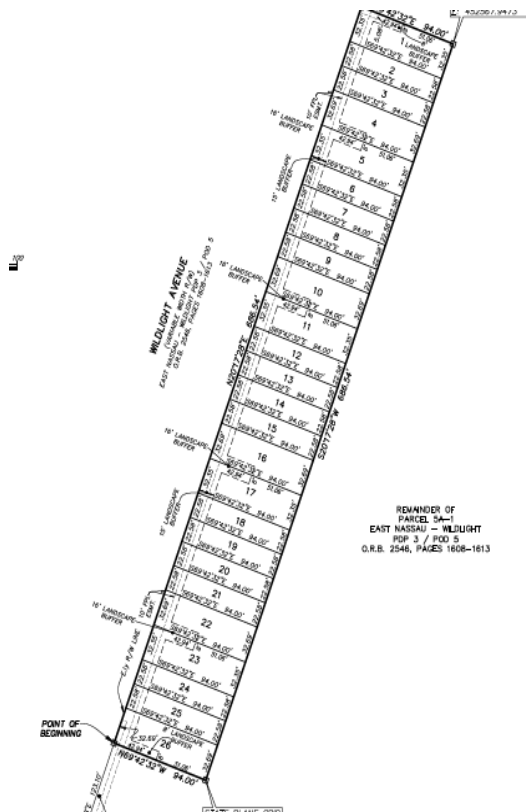
APPLICATION & SURROUNDING AREA INFORMATION:

OWNER/APPLICANT:	Hamlet at WL, LLC
AGENT:	Emily S. Miller/England-Thims & Miller, Inc.
REQUESTED ACTION:	Approval of the final replat for Hamlet at Wildlight
APPLICABLE REGULATIONS:	Chapter 29 of the Nassau County Code of Laws and Ordinances
PARCEL ID:	50-3N-27-1005-05A1-0000
CURRENT LAND USE + ZONING:	Multi-Use ENCPA/PD-ENCPA
LOCATION:	Approximately 1.25 miles from State Road 200 on Wildlight Avenue
AREA:	Approximately 1.48 acres

*** All required application materials have been received. All fees have been paid. All required notices have been made. All copies of required materials are part of the official record and have been made available on the County's website and at the Planning Department Office. ***

SUMMARY OF REQUEST AND BACKGROUND INFORMATION

The Hamlet at Wildlight subdivision will consist of 26 single family lots on a portion of a 1.48 acres of parcel. County and agency department heads determined that the replat for Hamlet at Wildlight is in compliance with the Comprehensive Plan, Land Development Code, and Nassau County Code of Laws and Ordinances.





Nassau County Development Services
96161 Nassau Place
Yulee, FL 32097

STAFF REPORT
Board of County Commissioners
PL23-001 Hamlet at Wildlight
January 8, 2024

CONSISTENCY WITH NASSAU COUNTY CODE OF LAWS AND ORDINANCES

This final replat has been reviewed for compliance with Nassau County Code of Laws and Ordinances, Chapter 29, Sec. 29-15. - Final plats - Subdivision and Development Review. It is consistent with the preliminary plat as approved by the Development Services Director.

CONCLUSION

Staff recommends approval of PL23-001 Hamlet at Wildlight.