



Nassau County Development Services  
96161 Nassau Place  
Yulee, FL 32097

STAFF REPORT  
Board of County Commissioners  
PL23-008 Del Webb Wildlight Ph 3  
February 12, 2024

## APPLICATION FOR FINAL PLAT APPROVAL

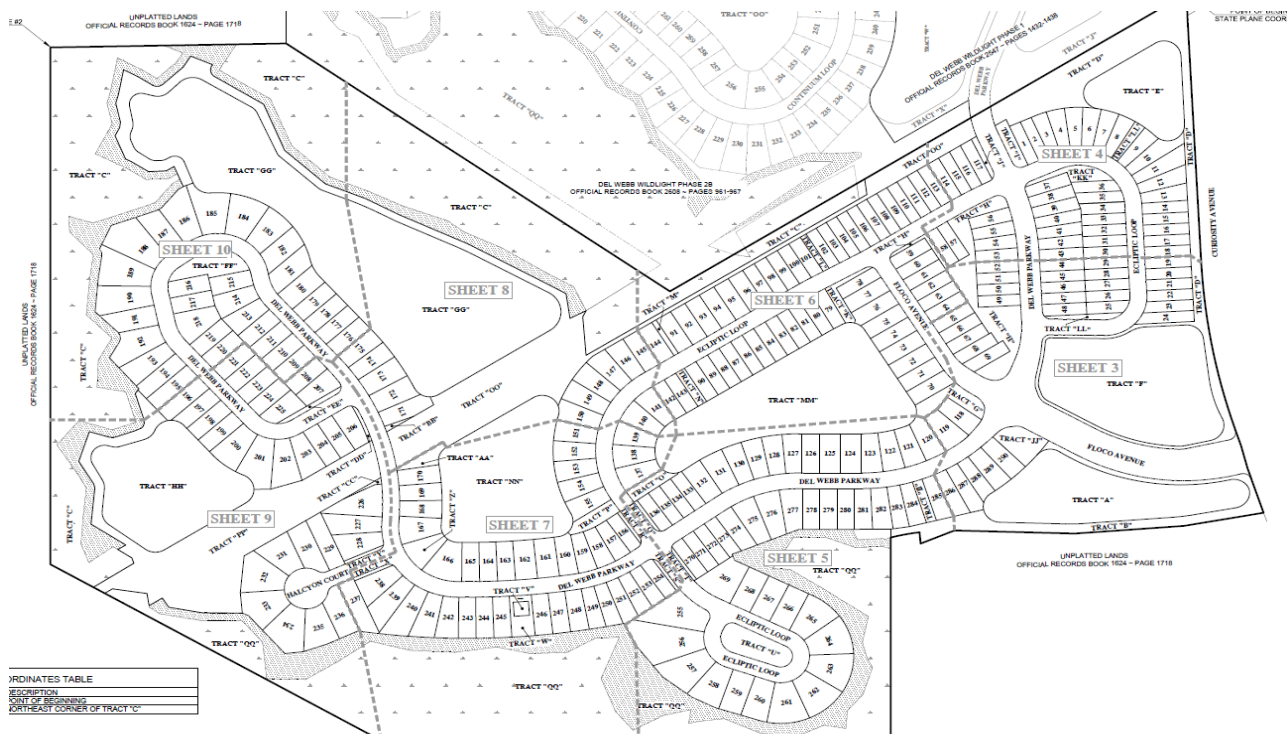
### APPLICATION & SURROUNDING AREA INFORMATION:

OWNER/APPLICANT:	Pulte Home Company, LLC
AGENT:	David Williams
REQUESTED ACTION:	Approval of the final replat for Del Webb Wildlight Phase 3
APPLICABLE REGULATIONS:	Chapter 29 of the Nassau County Code of Laws and Ordinances
PARCEL ID:	50-3N-27-0000-0001-0430
CURRENT LAND USE + ZONING:	Multi-Use ENCPA/PD-ENCPA
LOCATION:	Approximately 1 mile from State Road 200 on Floco Avenue to Curiosity Ave.
AREA:	Approximately 132 acres

\*\*\* All required application materials have been received. All fees have been paid. All required notices have been made. All copies of required materials are part of the official record and have been made available on the County's website and at the Planning Department Office. \*\*\*

### SUMMARY OF REQUEST AND BACKGROUND INFORMATION

The Del Webb Wildlight Phase 3 portion of the subdivision will consist of 216 single family lots and 74 Villas/Duplex on approximately 132 acres. County and agency department heads determined that the plat for Del Webb Wildlight Phase 3 is in compliance with the Comprehensive Plan, Land Development Code, and Nassau County Code of Laws and Ordinances.





Nassau County Development Services  
96161 Nassau Place  
Yulee, FL 32097

**STAFF REPORT**  
**Board of County Commissioners**  
**PL23-008 Del Webb Wildlight Ph 3**  
**February 12, 2024**

### **CONSISTENCY WITH NASSAU COUNTY CODE OF LAWS AND ORDINANCES**

This final replat has been reviewed for compliance with Nassau County Code of Laws and Ordinances, Chapter 29, Sec. 29-15. - Final plats - Subdivision and Development Review. It is consistent with the preliminary plat as approved by the Development Services Director.

### **CONCLUSION**

Staff recommends approval of PL23-008 Del Webb Wildlight Phase 3.