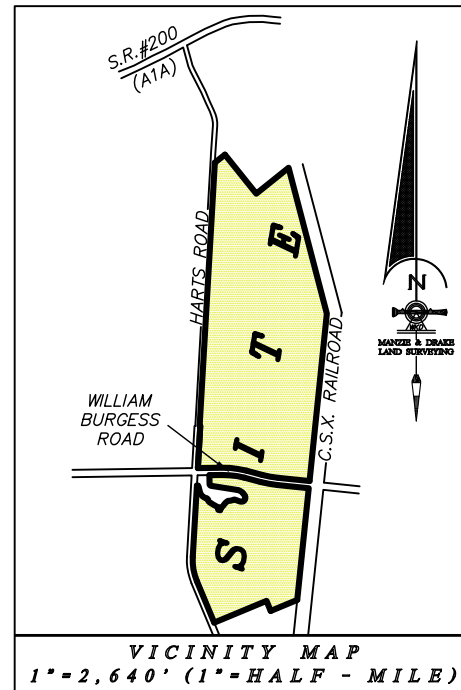
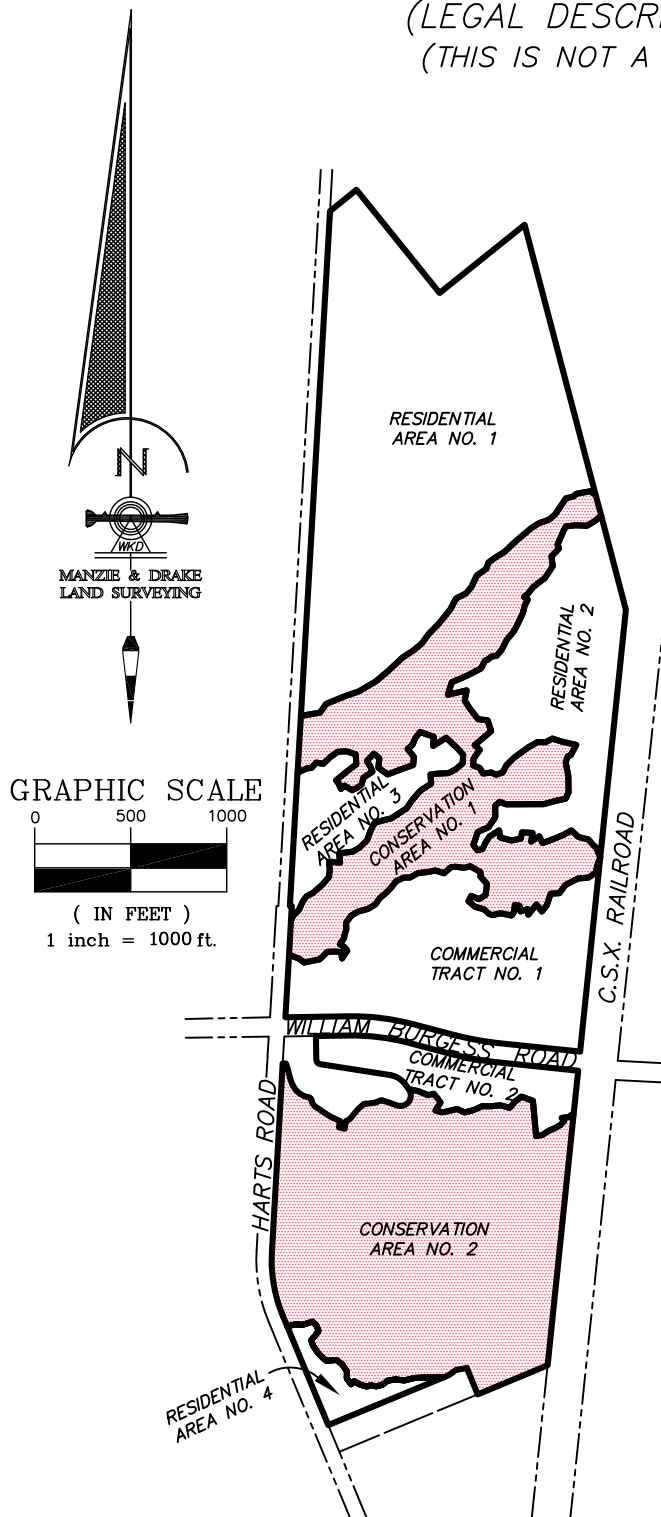
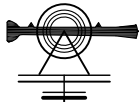


SKETCH OF LEGAL DESCRIPTION

(LEGAL DESCRIPTION ATTACHED)
 (THIS IS NOT A BOUNDARY SURVEY)



COVER SHEET
 JOB NO. 16509
 SHEET 1 OF 13



SKETCH OF LEGAL DESCRIPTION

(LEGAL DESCRIPTION ATTACHED)
(THIS IS NOT A BOUNDARY SURVEY)

LINE TABLE		
LINE	BEARING	LENGTH
L1	S70°18'41"E	57.48'
L2	S50°12'59"E	31.12'
L3	N78°36'02"E	83.29'
L4	N46°25'25"E	56.59'
L5	N87°58'32"E	42.87'
L6	S81°57'27"E	28.36'
L7	S8°06'28"E	33.19'
L8	N33°22'10"E	49.56'
L9	N37°14'40"W	21.78'
L10	N59°09'19"W	30.52'
L11	N35°06'43"E	40.15'
L12	N6°10'17"E	17.70'
L13	N18°19'30"E	29.83'
L14	N2°34'14"W	33.89'
L15	N35°46'01"E	46.64'
L16	N60°51'27"E	39.62'
L17	N74°05'05"E	55.03'
L18	N59°01'05"E	43.95'
L19	N34°53'29"E	39.65'
L20	N49°58'48"E	47.58'
L21	N42°58'12"E	37.91'
L22	N36°50'46"E	37.61'
L23	N64°49'28"E	46.97'
L24	S88°42'45"E	29.81'
L25	N61°49'38"E	48.95'
L26	N83°29'37"E	57.39'
L27	N76°54'41"E	33.00'
L28	S72°25'30"E	48.04'
L29	N48°06'28"E	46.05'
L30	N82°59'23"E	25.03'
L31	S83°02'49"E	45.67'
L32	N75°04'03"E	32.94'
L33	S59°48'06"E	62.34'
L34	S1°44'57"W	23.07'
L35	S41°58'48"E	50.78'
L36	S7°04'05"W	58.42'
L37	S58°03'51"W	41.33'
L38	N66°29'43"W	42.98'

LINE TABLE		
LINE	BEARING	LENGTH
L39	S27°52'18"W	30.93'
L40	S49°43'15"E	45.68'
L41	S74°19'30"E	48.03'
L42	S46°41'24"E	33.04'
L43	S66°51'01"E	20.44'
L44	N76°58'55"E	43.73'
L45	S78°53'01"E	59.73'
L46	N33°49'20"E	19.29'
L47	N9°19'57"E	40.47'
L48	S78°08'22"E	24.12'
L49	S8°05'49"E	30.39'
L50	N70°42'24"E	40.50'
L51	S6°13'43"E	30.55'
L52	N38°06'28"E	68.18'
L53	S37°51'59"E	46.01'
L54	N38°02'54"E	41.59'
L55	N18°36'25"E	62.78'
L56	N85°55'41"E	45.98'
L57	N36°35'41"E	52.77'
L58	N62°34'53"E	73.32'
L59	N84°45'02"E	54.68'
L60	N56°59'00"E	45.17'
L61	N12°55'40"E	50.18'
L62	N20°58'29"E	35.43'
L63	N23°31'40"W	52.66'
L64	N45°52'22"W	26.52'
L65	N41°03'34"W	32.22'
L66	N75°39'50"W	54.30'
L67	N46°43'37"W	50.24'
L68	S60°41'20"W	48.70'
L69	S67°28'59"W	61.43'
L70	S70°40'02"W	54.62'
L71	N24°54'15"W	38.61'
L72	S57°01'11"W	51.16'
L73	N10°00'29"E	45.31'
L74	N85°46'16"W	55.08'
L75	S11°36'08"W	34.31'
L76	S79°07'45"W	49.29'

LINE TABLE		
LINE	BEARING	LENGTH
L77	N74°51'06"W	60.98'
L78	N7°53'18"W	37.13'
L79	S57°48'05"W	59.41'
L80	S33°17'40"W	36.49'
L81	S25°15'33"W	39.70'
L82	S78°45'38"W	27.03'
L83	N36°53'24"W	34.67'
L84	N19°17'30"E	71.62'
L85	N66°00'31"E	60.77'
L86	N34°02'30"E	63.04'
L87	N0°25'17"W	59.16'
L88	N49°18'11"E	31.83'
L89	S68°11'54"E	34.71'
L90	N89°51'44"E	195.15'
L91	N75°23'57"E	71.59'
L92	N77°35'43"E	46.49'
L93	N24°41'01"E	37.45'
L94	N0°35'21"W	86.23'
L95	N10°56'58"W	70.25'
L96	N17°02'53"E	33.05'
L97	N69°06'42"E	17.18'
L98	N28°11'25"E	60.85'
L99	N76°57'54"W	79.98'
L100	N71°41'50"W	48.74'
L101	S61°05'23"W	40.88'
L102	N88°29'50"W	41.75'
L103	S60°09'44"W	50.31'
L104	S54°20'06"W	64.72'
L105	S54°01'49"W	36.86'
L106	S44°36'48"W	51.41'
L107	S27°36'28"W	42.07'
L108	S71°39'36"W	36.63'
L109	N63°13'09"W	26.46'
L110	S81°22'08"W	43.62'
L111	N31°39'35"W	35.42'
L112	N69°26'23"W	36.62'
L113	N4°53'47"E	35.32'
L114	N35°10'15"E	55.60'

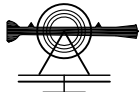
LINE TABLE		
LINE	BEARING	LENGTH
L115	N45°55'19"W	36.30'
L116	N49°49'40"E	111.55'
L117	N17°06'34"W	60.05'
L118	N83°55'34"W	50.64'
L119	N37°16'04"W	75.43'
L120	N32°35'22"W	44.27'
L121	N11°32'18"E	53.55'
L122	S77°03'41"W	100.93'
L123	N17°24'37"E	68.90'
L124	N66°47'21"E	85.95'
L125	N62°35'35"E	84.09'
L126	N25°11'55"E	32.07'
L127	N24°07'07"E	11.59'
L128	N73°10'18"E	16.25'
L129	N46°18'34"E	23.74'
L130	N82°33'47"E	28.45'
L131	N40°23'12"E	40.32'
L132	N26°40'54"E	60.52'
L133	N40°24'21"E	53.06'
L134	N30°43'31"E	31.16'
L135	N25°09'13"E	80.32'
L136	N13°37'43"E	40.06'
L137	N27°36'17"E	33.25'
L138	N53°05'53"W	24.85'
L139	N56°12'09"E	21.51'
L140	N38°30'03"E	49.20'
L141	N51°02'30"E	46.60'
L142	N54°39'15"E	29.57'
L143	N33°20'11"E	74.66'
L144	N7°37'26"W	51.49'
L145	N43°46'28"E	58.56'
L146	N23°46'54"W	21.03'
L147	N23°37'23"E	72.92'
L148	N26°16'31"E	30.95'
L149	N83°07'16"E	49.57'
L150	S88°00'10"E	61.56'
L151	N59°24'17"E	49.20'
L152	N49°18'08"E	41.15'

JOB NO. 16509
SHEET 3 OF 13

CONSERVATION AREA NUMBER 1

117 SOUTH 9TH STREET, FERNANDINA BEACH, FL 32034
OFFICE (904)491-5700 * FAX (904)491-5777

WWW.MANZIEANDDRAKE.COM



SKETCH OF LEGAL DESCRIPTION

(LEGAL DESCRIPTION ATTACHED)
(THIS IS NOT A BOUNDARY SURVEY)

LINE TABLE		
LINE	BEARING	LENGTH
L153	N14°43'53"W	108.86'
L154	N50°40'15"W	35.21'
L155	S79°57'48"W	75.47'
L156	S46°09'30"W	20.92'
L157	S76°19'46"W	40.55'
L158	S33°43'05"W	99.37'
L159	S49°21'30"W	40.92'
L160	S67°30'49"W	37.58'
L161	S78°01'22"W	16.79'
L162	S55°42'02"W	33.19'
L163	S53°57'40"W	63.63'
L164	S48°29'22"W	49.19'
L165	S47°35'00"W	48.20'
L166	S45°04'08"W	44.31'
L167	S59°13'38"W	57.21'
L168	S52°45'25"W	43.81'
L169	S18°52'23"W	32.92'
L170	S54°32'37"W	60.87'
L171	S24°55'59"W	66.44'
L172	S40°43'36"W	43.17'
L173	S63°04'24"W	57.83'
L174	S28°06'29"W	65.89'
L175	S38°43'56"W	93.97'
L176	S44°49'42"W	76.18'
L177	S35°24'58"W	63.04'
L178	S51°07'43"W	58.70'
L179	S57°13'09"W	64.74'
L180	S46°44'30"W	102.53'
L181	S49°32'53"W	81.65'
L182	S59°40'59"W	104.98'
L183	S71°25'24"W	63.46'
L184	S68°05'28"W	64.18'
L185	S66°59'11"W	54.12'
L186	S34°35'31"W	54.79'
L187	S80°46'35"W	101.52'
L188	S3°18'00"W	293.29'
L189	S84°30'44"E	6.14'
L190	N65°03'52"E	44.69'

LINE TABLE		
LINE	BEARING	LENGTH
L191	N81°18'14"E	26.84'
L192	N41°30'09"E	35.79'
L193	S80°08'22"E	36.75'
L194	N46°52'04"E	53.45'
L195	N54°42'06"E	45.78'
L196	N87°23'09"E	46.15'
L197	S71°35'10"E	50.36'
L198	S2°15'01"E	51.39'
L199	S52°12'27"W	56.77'
L200	S51°00'09"W	77.59'
L201	S37°33'27"E	22.53'
L202	S22°54'41"E	29.74'
L203	N47°03'59"E	25.45'
L204	S58°58'08"E	46.14'
L205	N64°14'51"E	27.76'
L206	N55°40'34"E	29.74'
L207	N14°57'07"E	38.14'
L208	N56°10'16"E	55.68'
L209	N21°04'24"W	31.26'
L210	N34°13'46"W	31.73'
L211	N43°42'11"E	53.05'
L212	S50°45'12"E	37.21'
L213	S6°31'29"W	49.43'
L214	S53°55'41"E	60.41'
L215	N68°56'38"E	78.07'
L216	N70°23'07"E	64.18'
L217	N4°28'55"E	42.42'
L218	N38°49'53"W	52.39'
L219	N48°42'42"E	34.64'
L220	N22°19'41"E	36.71'
L221	N38°57'51"E	41.71'
L222	S67°30'11"E	23.45'
L223	S71°39'31"E	51.02'
L224	S4°32'27"W	48.25'
L225	N58°13'04"E	80.42'
L226	S46°23'29"E	85.06'
L227	S41°21'07"E	40.62'
L228	S3°17'59"W	43.98'

LINE TABLE		
LINE	BEARING	LENGTH
L229	S49°24'30"W	49.06'
L230	S62°29'13"W	40.91'
L231	S87°04'09"W	53.43'
L232	S83°31'32"W	40.51'
L233	S4°08'11"E	47.93'
L234	S56°59'36"W	67.02'
L235	S41°11'08"W	65.40'
L236	S33°07'23"W	51.47'
L237	S57°03'38"W	95.42'
L238	S76°15'25"W	38.16'
L239	S73°14'13"W	53.55'
L240	S26°22'01"W	47.91'
L241	S19°51'05"W	49.75'
L242	S45°42'03"W	55.36'
L243	S60°16'48"W	41.30'
L244	S83°04'45"W	41.18'
L245	S82°45'37"W	29.44'
L246	S5°43'42"E	49.50'
L247	N84°08'46"W	58.09'
L248	S5°33'58"E	41.47'
L249	S5°37'16"W	38.06'
L250	S40°30'04"W	54.99'
L251	S48°24'42"W	65.43'
L252	S64°03'05"W	34.56'
L253	S37°32'46"W	32.80'
L254	S24°21'18"W	49.96'
L255	S44°35'19"W	41.97'
L256	S25°12'08"W	29.21'
L257	S3°18'00"W	179.17'

CONSERVATION
AREA NUMBER 1



MANZIE & DRAKE LAND SURVEYING



LEGAL DESCRIPTION CONSERVATION AREA No. 1 OCTOBER 17, 2017

A PORTION OF THE JOHN LOWE MILL GRANT, SECTION 42, TOWNSHIP 2 NORTH, RANGE 27 EAST, NASSAU COUNTY, FLORIDA, BEING MORE PARTICULARLY DESCRIBED AS FOLLOWS:

FOR A POINT OF REFERENCE COMMENCE AT THE INTERSECTION OF THE NORTHERLY LINE OF LOT 1, "WIDE ROAD ACRES", ACCORDING TO THE PLAT THEREOF RECORDED IN PLAT BOOK 5, PAGES 404-406, OF THE PUBLIC RECORDS OF NASSAU COUNTY, FLORIDA, WITH THE EASTERLY RIGHT-OF-WAY LINE OF HARTS ROAD, AN 80 FOOT RIGHT-OF-WAY AS NOW LAID OUT AND IN USE; THENCE ALONG SAID EASTERLY RIGHT-OF-WAY LINE, NORTH 22°33'00" WEST, A DISTANCE OF 616.85 FEET TO THE POINT OF CURVATURE OF A RIGHT-OF-WAY CURVE CONCAVE EASTERLY, HAVING A RADIUS OF 758.08 FEET AND A CENTRAL ANGLE OF 25°50'59"; THENCE NORTHWESTERLY ALONG SAID RIGHT-OF-WAY CURVE AN ARC DISTANCE OF 342.02 FEET, BEING SUBTENDED BY A CHORD BEARING NORTH 09°37'32" WEST A DISTANCE OF 339.12 FEET, TO THE POINT OF TANGENCY OF SAID CURVE; THENCE CONTINUE ALONG SAID EASTERLY RIGHT-OF-WAY, NORTH 03°18'00" EAST A DISTANCE OF 1547.70 FEET TO THE **POINT OF BEGINNING**; THENCE DEPARTING SAID EASTERLY RIGHT-OF-WAY LINE, SOUTH 70°18'41" EAST A DISTANCE OF 57.48 FEET; THENCE SOUTH 50°12'59" EAST A DISTANCE OF 31.12 FEET; THENCE NORTH 78°36'02" EAST A DISTANCE OF 83.29 FEET; THENCE NORTH 46°25'25" EAST A DISTANCE OF 56.59 FEET; THENCE NORTH 87°58'32" EAST A DISTANCE OF 42.87 FEET; THENCE SOUTH 81°57'27" EAST A DISTANCE OF 28.36 FEET; THENCE SOUTH 08°06'28" EAST A DISTANCE OF 33.19 FEET; THENCE NORTH 33°22'10" EAST A DISTANCE OF 49.56 FEET; THENCE NORTH 37°14'40" WEST A DISTANCE OF 21.78 FEET; THENCE NORTH 59°09'19" WEST A DISTANCE OF 30.52 FEET; THENCE NORTH 35°06'43" EAST A DISTANCE OF 40.15 FEET; THENCE NORTH 06°10'17" EAST A DISTANCE OF 17.70 FEET; THENCE NORTH 18°19'30" EAST A DISTANCE OF 29.83; THENCE NORTH 02°34'14" WEST A DISTANCE OF 33.89 FEET; THENCE NORTH 35°46'01" EAST A DISTANCE OF 46.64 FEET; THENCE NORTH 60°51'27" EAST A DISTANCE OF 39.62 FEET; THENCE NORTH 74°05'05" EAST A DISTANCE OF 55.03 FEET; THENCE NORTH 59°01'05" EAST A DISTANCE OF 43.95 FEET; THENCE NORTH 34°53'29" EAST A DISTANCE OF 39.65 FEET; THENCE NORTH 49°58'48" EAST A DISTANCE OF 47.58 FEET; THENCE NORTH 42°58'12" EAST A DISTANCE OF 37.91 FEET; THENCE NORTH 36°50'46" EAST A DISTANCE OF 37.61 FEET; THENCE NORTH 64°49'28" EAST A DISTANCE OF 46.97 FEET; THENCE SOUTH 88°42'45" EAST A DISTANCE OF 29.81 FEET; THENCE NORTH 61°49'38" EAST A DISTANCE OF 48.95 FEET; THENCE NORTH 83°29'37" EAST A DISTANCE OF 57.39 FEET; THENCE NORTH 76°54'41" EAST A DISTANCE OF 33.00 FEET; THENCE SOUTH 72°25'30" EAST A DISTANCE OF 48.04 FEET; THENCE NORTH 48°06'28" EAST A DISTANCE OF 46.05 FEET; THENCE NORTH 82°59'23" EAST A DISTANCE OF 25.03 FEET; THENCE SOUTH 83°02'49" EAST A DISTANCE OF 45.67 FEET; THENCE NORTH 75°04'03" EAST A DISTANCE OF 32.94 FEET; THENCE SOUTH 59°48'06" EAST A DISTANCE OF 62.34 FEET; THENCE SOUTH 01°44'57" WEST A DISTANCE OF 23.07 FEET; THENCE SOUTH 41°58'48" EAST A DISTANCE OF 50.78 FEET; THENCE SOUTH 07°04'05" WEST A DISTANCE OF 58.42 FEET; THENCE SOUTH 58°03'51" WEST A DISTANCE OF 41.33 FEET; THENCE NORTH 66°29'43" WEST A DISTANCE OF 42.98 FEET; THENCE SOUTH 27°52'18" WEST A DISTANCE OF 30.93 FEET; THENCE SOUTH 49°43'15" EAST A DISTANCE OF 45.68 FEET; THENCE SOUTH 74°19'30" EAST A DISTANCE OF 48.03 FEET; THENCE SOUTH 46°41'24" EAST A DISTANCE OF 33.04 FEET; THENCE SOUTH 66°51'01" EAST A DISTANCE OF 20.44 FEET; THENCE NORTH 76°58'55" EAST A DISTANCE OF 43.73 FEET; THENCE SOUTH 78°53'01" EAST A DISTANCE OF 59.73 FEET; THENCE NORTH 33°49'20" EAST A DISTANCE OF 19.29 FEET; THENCE NORTH 09°19'57" EAST A DISTANCE OF 40.47 FEET; THENCE SOUTH 78°08'22" EAST A DISTANCE OF 24.12 FEET; THENCE SOUTH 08°05'49" EAST A DISTANCE OF 30.39 FEET; THENCE NORTH 70°42'24" EAST A DISTANCE OF 40.50 FEET; THENCE SOUTH 06°13'43" EAST A DISTANCE OF 30.55 FEET;

SHEET 5 OF 13

117 SOUTH 9TH STREET, FERNANDINA BEACH, FL 32034
OFFICE (904) 491-5700 • FAX (904) 491-5777 • TOLL FREE (888) 832-7730
www.manzieanddrake.com



MANZIE & DRAKE LAND SURVEYING



THENCE NORTH 38°06'28" EAST A DISTANCE OF 68.18 FEET; THENCE SOUTH 37°51'59" EAST A DISTANCE OF 46.01 FEET; THENCE NORTH 38°02'54" EAST A DISTANCE OF 41.59 FEET; THENCE NORTH 18°36'25" EAST A DISTANCE OF 62.78 FEET; THENCE NORTH 85°55'41" EAST A DISTANCE OF 45.98 FEET; THENCE NORTH 36°35'41" EAST A DISTANCE OF 52.77 FEET; THENCE NORTH 62°34'53" EAST A DISTANCE OF 73.32 FEET; THENCE NORTH 84°45'02" EAST A DISTANCE OF 54.68 FEET; THENCE NORTH 56°59'00" EAST A DISTANCE OF 45.17 FEET; THENCE NORTH 12°55'40" EAST A DISTANCE OF 50.18 FEET; THENCE NORTH 20°58'29" EAST A DISTANCE OF 35.43 FEET TO THE WESTERLY RIGHT-OF-WAY OF THE CSX RAILROAD (200 FEET WIDE AS NOW ESTABLISHED); THENCE DEPARTING SAID RIGHT-OF-WAY LINE, NORTH 23°31'40" WEST A DISTANCE OF 52.66 FEET; THENCE NORTH 45°52'22" WEST A DISTANCE OF 26.52 FEET; THENCE NORTH 41°03'34" WEST A DISTANCE OF 32.22 FEET; THENCE NORTH 75°39'50" WEST A DISTANCE OF 54.30 FEET; THENCE NORTH 46°43'37" WEST A DISTANCE OF 50.24 FEET; THENCE SOUTH 60°41'20" WEST A DISTANCE OF 48.70 FEET; THENCE SOUTH 67°28'59" WEST A DISTANCE OF 61.43 FEET; THENCE SOUTH 70°40'02" WEST A DISTANCE OF 54.62 FEET; THENCE NORTH 24°54'15" WEST A DISTANCE OF 38.61 FEET; THENCE SOUTH 57°01'11" WEST A DISTANCE OF 51.16 FEET; THENCE NORTH 10°00'29" EAST A DISTANCE OF 45.31 FEET; THENCE NORTH 85°46'16" WEST A DISTANCE OF 55.08 FEET; THENCE SOUTH 11°36'08" WEST A DISTANCE OF 34.31 FEET; THENCE SOUTH 79°07'45" WEST A DISTANCE OF 49.29 FEET; THENCE NORTH 74°51'06" WEST A DISTANCE OF 60.98 FEET; THENCE NORTH 07°53'18" WEST A DISTANCE OF 37.13 FEET; THENCE SOUTH 57°48'05" WEST A DISTANCE OF 59.41 FEET; THENCE SOUTH 33°17'40" WEST A DISTANCE OF 36.49 FEET; THENCE SOUTH 25°15'33" WEST A DISTANCE OF 39.70 FEET; THENCE SOUTH 78°45'38" WEST A DISTANCE OF 27.03 FEET; THENCE NORTH 36°53'24" WEST A DISTANCE OF 34.67 FEET; THENCE NORTH 19°17'30" EAST A DISTANCE OF 71.62 FEET; THENCE NORTH 66°00'31" EAST A DISTANCE OF 60.77 FEET; THENCE NORTH 34°02'30" EAST A DISTANCE OF 63.04 FEET; THENCE NORTH 00°25'17" WEST A DISTANCE OF 59.16 FEET; THENCE NORTH 49°18'11" EAST A DISTANCE OF 31.83 FEET; THENCE SOUTH 68°11'54" EAST A DISTANCE OF 34.71 FEET; THENCE NORTH 89°51'44" EAST A DISTANCE OF 195.15 FEET; THENCE NORTH 75°23'57" EAST A DISTANCE OF 71.59 FEET; THENCE NORTH 77°35'43" EAST A DISTANCE OF 46.49 FEET; THENCE NORTH 24°41'01" EAST A DISTANCE OF 37.45 FEET; THENCE NORTH 00°35'21" WEST A DISTANCE OF 86.23 FEET; THENCE NORTH 10°56'58" WEST A DISTANCE OF 70.25 FEET; THENCE NORTH 17°02'53" EAST A DISTANCE OF 33.05 FEET; THENCE NORTH 69°06'42" EAST A DISTANCE OF 17.18 FEET; THENCE NORTH 28°11'25" EAST A DISTANCE OF 60.85 FEET; THENCE NORTH 76°57'54" WEST A DISTANCE OF 79.98 FEET; THENCE NORTH 71°41'50" WEST A DISTANCE OF 48.74 FEET; THENCE SOUTH 61°05'23" WEST A DISTANCE OF 40.88 FEET; THENCE NORTH 88°29'50" WEST A DISTANCE OF 41.75 FEET; THENCE SOUTH 60°09'44" WEST A DISTANCE OF 50.31 FEET; THENCE SOUTH 54°20'06" WEST A DISTANCE OF 64.72 FEET; THENCE SOUTH 54°01'49" WEST A DISTANCE OF 36.86 FEET; THENCE SOUTH 44°36'48" WEST A DISTANCE OF 51.41 FEET; THENCE SOUTH 27°36'28" WEST A DISTANCE OF 42.07 FEET; THENCE SOUTH 71°39'36" WEST A DISTANCE OF 36.63 FEET; THENCE NORTH 63°13'09" WEST A DISTANCE OF 26.46 FEET; THENCE SOUTH 81°22'08" WEST A DISTANCE OF 43.62 FEET; THENCE NORTH 31°39'35" WEST A DISTANCE OF 35.42 FEET; THENCE NORTH 69°26'23" WEST A DISTANCE OF 36.62 FEET; THENCE NORTH 04°53'47" EAST A DISTANCE OF 35.32 FEET; THENCE NORTH 35°10'15" EAST A DISTANCE OF 55.60 FEET; THENCE NORTH 45°55'19" WEST A DISTANCE OF 36.30 FEET; THENCE NORTH 49°49'40" EAST A DISTANCE OF 111.55 FEET; THENCE NORTH 17°06'34" WEST A DISTANCE OF 60.05 FEET; THENCE NORTH 83°55'34" WEST A DISTANCE OF 50.64 FEET; THENCE NORTH 37°16'04" WEST A DISTANCE OF 75.43 FEET; THENCE NORTH 32°35'22" WEST A DISTANCE OF 44.27 FEET; THENCE NORTH 11°32'18" EAST A DISTANCE OF 53.55 FEET; THENCE SOUTH 77°03'41" WEST A DISTANCE OF 100.93 FEET; THENCE NORTH 17°24'37" EAST A DISTANCE OF 68.90 FEET; THENCE NORTH 66°47'21" EAST A DISTANCE OF 85.95 FEET; THENCE NORTH 62°35'35" EAST A DISTANCE OF 84.09 FEET; THENCE NORTH 25°11'55" EAST A DISTANCE OF 32.07 FEET; THENCE NORTH 24°07'07" EAST A DISTANCE OF 11.59 FEET; THENCE NORTH 73°10'18" EAST A DISTANCE OF 16.25 FEET; THENCE NORTH

SHEET 6 OF 13

117 SOUTH 9TH STREET, FERNANDINA BEACH, FL 32034

OFFICE (904) 491-5700 • FAX (904) 491-5777 • TOLL FREE (888) 832-7730

www.manzieanddrake.com



MANZIE & DRAKE LAND SURVEYING



46°18'34" EAST A DISTANCE OF 23.74 FEET; THENCE NORTH 82°33'47" EAST A DISTANCE OF 28.45 FEET; THENCE NORTH 40°23'12" EAST A DISTANCE OF 40.32 FEET; THENCE NORTH 26°40'54" EAST A DISTANCE OF 60.52 FEET; THENCE NORTH 40°24'21" EAST A DISTANCE OF 53.06 FEET; THENCE NORTH 30°43'31" EAST A DISTANCE OF 31.16 FEET; THENCE NORTH 25°09'13" EAST A DISTANCE OF 80.32 FEET; THENCE NORTH 13°37'43" EAST A DISTANCE OF 40.06 FEET; THENCE NORTH 27°36'17" EAST A DISTANCE OF 33.25 FEET; THENCE NORTH 53°05'53" WEST A DISTANCE OF 24.85 FEET; THENCE NORTH 56°12'09" EAST A DISTANCE OF 21.51 FEET; THENCE NORTH 38°30'03" EAST A DISTANCE OF 49.20 FEET; THENCE NORTH 51°02'30" EAST A DISTANCE OF 46.60 FEET; THENCE NORTH 54°39'15" EAST A DISTANCE OF 29.57 FEET; THENCE NORTH 33°20'11" EAST A DISTANCE OF 74.66 FEET; THENCE NORTH 07°37'26" WEST A DISTANCE OF 51.49 FEET; THENCE NORTH 43°46'28" EAST A DISTANCE OF 58.56 FEET; THENCE NORTH 23°46'54" WEST A DISTANCE OF 21.03 FEET; THENCE NORTH 23°37'23" EAST A DISTANCE OF 72.92 FEET; THENCE NORTH 26°16'31" EAST A DISTANCE OF 30.95 FEET; THENCE NORTH 83°07'16" EAST A DISTANCE OF 49.57 FEET; THENCE SOUTH 88°00'10" EAST A DISTANCE OF 61.56 FEET; THENCE NORTH 59°24'17" EAST A DISTANCE OF 49.20 FEET; THENCE NORTH 49°18'08" EAST A DISTANCE OF 41.15 FEET TO THE CSX RAILROAD RIGHT-OF-WAY (A TRANSITIONAL RIGHT-OF-WAY); THENCE NORTH 14°43'53" WEST, ALONG SAID WESTERLY RIGHT-OF-WAY LINE, A DISTANCE OF 108.86 FEET; THENCE DEPARTING SAID RAILROAD RIGHT-OF-WAY, NORTH 50°40'15" WEST A DISTANCE OF 35.21 FEET; THENCE SOUTH 79°57'48" WEST A DISTANCE OF 75.47 FEET; THENCE SOUTH 46°09'30" WEST A DISTANCE OF 20.92 FEET; THENCE SOUTH 76°19'46" WEST A DISTANCE OF 40.55 FEET; THENCE SOUTH 33°43'05" WEST A DISTANCE OF 99.37 FEET; THENCE SOUTH 49°21'30" WEST A DISTANCE OF 40.92 FEET; THENCE SOUTH 67°30'49" WEST A DISTANCE OF 37.58 FEET; THENCE SOUTH 78°01'22" WEST A DISTANCE OF 16.79 FEET; THENCE SOUTH 55°42'02" WEST A DISTANCE OF 33.19 FEET; THENCE SOUTH 53°57'40" WEST A DISTANCE OF 63.63 FEET; THENCE SOUTH 48°29'22" WEST A DISTANCE OF 49.19 FEET; THENCE SOUTH 47°35'00" WEST A DISTANCE OF 48.20 FEET; THENCE SOUTH 45°04'08" WEST A DISTANCE OF 44.31 FEET; THENCE SOUTH 59°13'38" WEST A DISTANCE OF 57.21 FEET; THENCE SOUTH 52°45'25" WEST A DISTANCE OF 43.81 FEET; THENCE SOUTH 18°52'23" WEST A DISTANCE OF 32.92 FEET; THENCE SOUTH 54°32'37" WEST A DISTANCE OF 60.87 FEET; THENCE SOUTH 24°55'59" WEST A DISTANCE OF 66.44 FEET; THENCE SOUTH 40°43'36" WEST A DISTANCE OF 43.17 FEET; THENCE SOUTH 63°04'24" WEST A DISTANCE OF 57.83 FEET; THENCE SOUTH 28°06'29" WEST A DISTANCE OF 65.89 FEET; THENCE SOUTH 38°43'56" WEST A DISTANCE OF 93.97 FEET; THENCE SOUTH 44°49'42" WEST A DISTANCE OF 76.18 FEET; THENCE SOUTH 35°24'58" WEST A DISTANCE OF 63.04 FEET; THENCE SOUTH 51°07'43" WEST A DISTANCE OF 58.70 FEET; THENCE SOUTH 57°13'09" WEST A DISTANCE OF 64.74 FEET; THENCE SOUTH 46°44'30" WEST A DISTANCE OF 102.53 FEET; THENCE SOUTH 49°32'53" WEST A DISTANCE OF 81.65 FEET; THENCE SOUTH 59°40'59" WEST A DISTANCE OF 104.98 FEET; THENCE SOUTH 71°25'24" WEST A DISTANCE OF 63.46 FEET; THENCE SOUTH 68°05'28" WEST A DISTANCE OF 64.18 FEET; THENCE SOUTH 66°59'11" WEST A DISTANCE OF 54.12 FEET; THENCE SOUTH 34°35'31" WEST A DISTANCE OF 54.79 FEET; THENCE SOUTH 80°46'35" WEST A DISTANCE OF 101.52 FEET TO THE AFORESAID EASTERLY RIGHT-OF-WAY LINE OF HARTS ROAD (60 FEET WIDE IN THIS AREA); THENCE SOUTH 03°18'00" WEST ALONG SAID RIGHT-OF-WAY LINE A DISTANCE OF 293.29 FEET; THENCE DEPARTING SAID RIGHT-OF-WAY LINE, SOUTH 84°30'44" EAST A DISTANCE OF 6.14 FEET; THENCE NORTH 65°03'52" EAST A DISTANCE OF 44.69 FEET; THENCE NORTH 81°18'14" EAST A DISTANCE OF 26.84 FEET; THENCE NORTH 41°30'09" EAST A DISTANCE OF 35.79 FEET; THENCE SOUTH 80°08'22" EAST A DISTANCE OF 36.75 FEET; THENCE NORTH 46°52'04" EAST A DISTANCE OF 53.45 FEET; THENCE NORTH 54°42'06" EAST A DISTANCE OF 45.78 FEET; THENCE NORTH 87°23'09" EAST A DISTANCE OF 46.15 FEET; THENCE SOUTH 71°35'10" EAST A DISTANCE OF 50.36 FEET; THENCE SOUTH 02°15'01" EAST A DISTANCE OF 51.39 FEET; THENCE SOUTH 52°12'27" WEST A DISTANCE OF 56.77 FEET; THENCE SOUTH 51°00'09" WEST A DISTANCE OF 77.59 FEET; THENCE SOUTH 37°33'27" EAST A DISTANCE OF 22.53 FEET; THENCE SOUTH 22°54'41" EAST A DISTANCE OF 29.74 FEET;

SHEET 7 OF 13

117 SOUTH 9TH STREET, FERNANDINA BEACH, FL 32034

OFFICE (904) 491-5700 • FAX (904) 491-5777 • TOLL FREE (888) 832-7730

www.manzieanddrake.com



MANZIE & DRAKE LAND SURVEYING



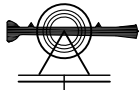
THENCE NORTH 47°03'59" EAST A DISTANCE OF 25.45 FEET; THENCE SOUTH 58°58'08" EAST A DISTANCE OF 46.14 FEET; THENCE NORTH 64°14'51" EAST A DISTANCE OF 27.76 FEET; THENCE NORTH 55°40'34" EAST A DISTANCE OF 29.74 FEET; THENCE NORTH 14°57'07" EAST A DISTANCE OF 38.14 FEET; THENCE NORTH 56°10'16" EAST A DISTANCE OF 55.68 FEET; THENCE NORTH 21°04'24" WEST A DISTANCE OF 31.26 FEET; THENCE NORTH 34°13'46" WEST A DISTANCE OF 31.73 FEET; THENCE NORTH 43°42'11" EAST A DISTANCE OF 53.05 FEET; THENCE SOUTH 50°45'12" EAST A DISTANCE OF 37.21 FEET; THENCE SOUTH 06°31'29" WEST A DISTANCE OF 49.43 FEET; THENCE SOUTH 53°55'41" EAST A DISTANCE OF 60.41 FEET; THENCE NORTH 68°56'38" EAST A DISTANCE OF 78.07 FEET; THENCE NORTH 70°23'07" EAST A DISTANCE OF 64.18 FEET; THENCE NORTH 04°28'55" EAST A DISTANCE OF 42.42 FEET; THENCE NORTH 38°49'53" WEST A DISTANCE OF 52.39 FEET; THENCE NORTH 48°42'42" EAST A DISTANCE OF 34.64 FEET; THENCE NORTH 22°19'41" EAST A DISTANCE OF 36.71 FEET; THENCE NORTH 38°57'51" EAST A DISTANCE OF 41.71 FEET; THENCE SOUTH 67°30'11" EAST A DISTANCE OF 23.45 FEET; THENCE SOUTH 71°39'31" EAST A DISTANCE OF 51.02 FEET; THENCE SOUTH 04°32'27" WEST A DISTANCE OF 48.25 FEET; THENCE NORTH 58°13'04" EAST A DISTANCE OF 80.42 FEET; THENCE SOUTH 46°23'29" EAST A DISTANCE OF 85.06 FEET; THENCE SOUTH 41°21'07" EAST A DISTANCE OF 40.62 FEET; THENCE SOUTH 03°17'59" WEST A DISTANCE OF 43.98 FEET; THENCE SOUTH 49°24'30" WEST A DISTANCE OF 49.06 FEET; THENCE SOUTH 62°29'13" WEST A DISTANCE OF 40.91 FEET; THENCE SOUTH 87°04'09" WEST A DISTANCE OF 53.43 FEET; THENCE SOUTH 83°31'32" WEST A DISTANCE OF 40.51 FEET; THENCE SOUTH 04°08'11" EAST A DISTANCE OF 47.93 FEET; THENCE SOUTH 56°59'36" WEST A DISTANCE OF 67.02 FEET; THENCE SOUTH 41°11'08" WEST A DISTANCE OF 65.40 FEET; THENCE SOUTH 33°07'23" WEST A DISTANCE OF 51.47 FEET; THENCE SOUTH 57°03'38" WEST A DISTANCE OF 95.42 FEET; THENCE SOUTH 76°15'25" WEST A DISTANCE OF 38.16 FEET; THENCE SOUTH 73°14'13" WEST A DISTANCE OF 53.55 FEET; THENCE SOUTH 26°22'01" WEST A DISTANCE OF 47.91 FEET; THENCE SOUTH 19°51'05" WEST A DISTANCE OF 49.75 FEET; THENCE SOUTH 45°42'03" WEST A DISTANCE OF 55.36 FEET; THENCE SOUTH 60°16'48" WEST A DISTANCE OF 41.30 FEET; THENCE SOUTH 83°04'45" WEST A DISTANCE OF 41.18 FEET; THENCE SOUTH 82°45'37" WEST A DISTANCE OF 29.44 FEET; THENCE SOUTH 05°43'42" EAST A DISTANCE OF 49.50 FEET; THENCE NORTH 84°08'46" WEST A DISTANCE OF 58.09 FEET; THENCE SOUTH 05°33'58" EAST A DISTANCE OF 41.47 FEET; THENCE SOUTH 05°37'16" WEST A DISTANCE OF 38.06 FEET; THENCE SOUTH 40°30'04" WEST A DISTANCE OF 54.99 FEET; THENCE SOUTH 48°24'42" WEST A DISTANCE OF 65.43 FEET; THENCE SOUTH 64°03'05" WEST A DISTANCE OF 34.56 FEET; THENCE SOUTH 37°32'46" WEST A DISTANCE OF 32.80 FEET; THENCE SOUTH 24°21'18" WEST A DISTANCE OF 49.96 FEET; THENCE SOUTH 44°35'19" WEST A DISTANCE OF 41.97 FEET; THENCE SOUTH 25°12'08" WEST A DISTANCE OF 29.21 FEET TO THE AFORESAID EASTERLY RIGHT-OF-WAY LINE OF HARTS ROAD; THENCE SOUTH 03°18'00" WEST ALONG SAID RIGHT-OF-WAY A DISTANCE OF 179.17 FEET TO THE POINT OF BEGINNING..

CONTAINING 31.810 ACRES MORE OR LESS.

 27 OCT 17

GUY L. MELVIN, P.L.S.
FLORIDA REGISTRATION NO. 4729
JOB # 16509

SHEET 8 OF 13

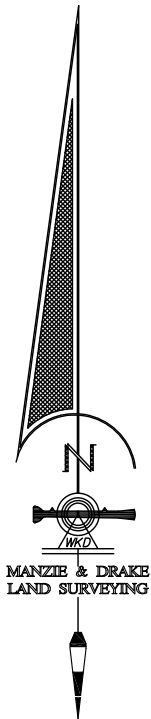


MANZIE & DRAKE LAND SURVEYING

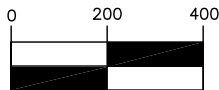
SKETCH OF LEGAL DESCRIPTION



(LEGAL DESCRIPTION ATTACHED)
(THIS IS NOT A BOUNDARY SURVEY)

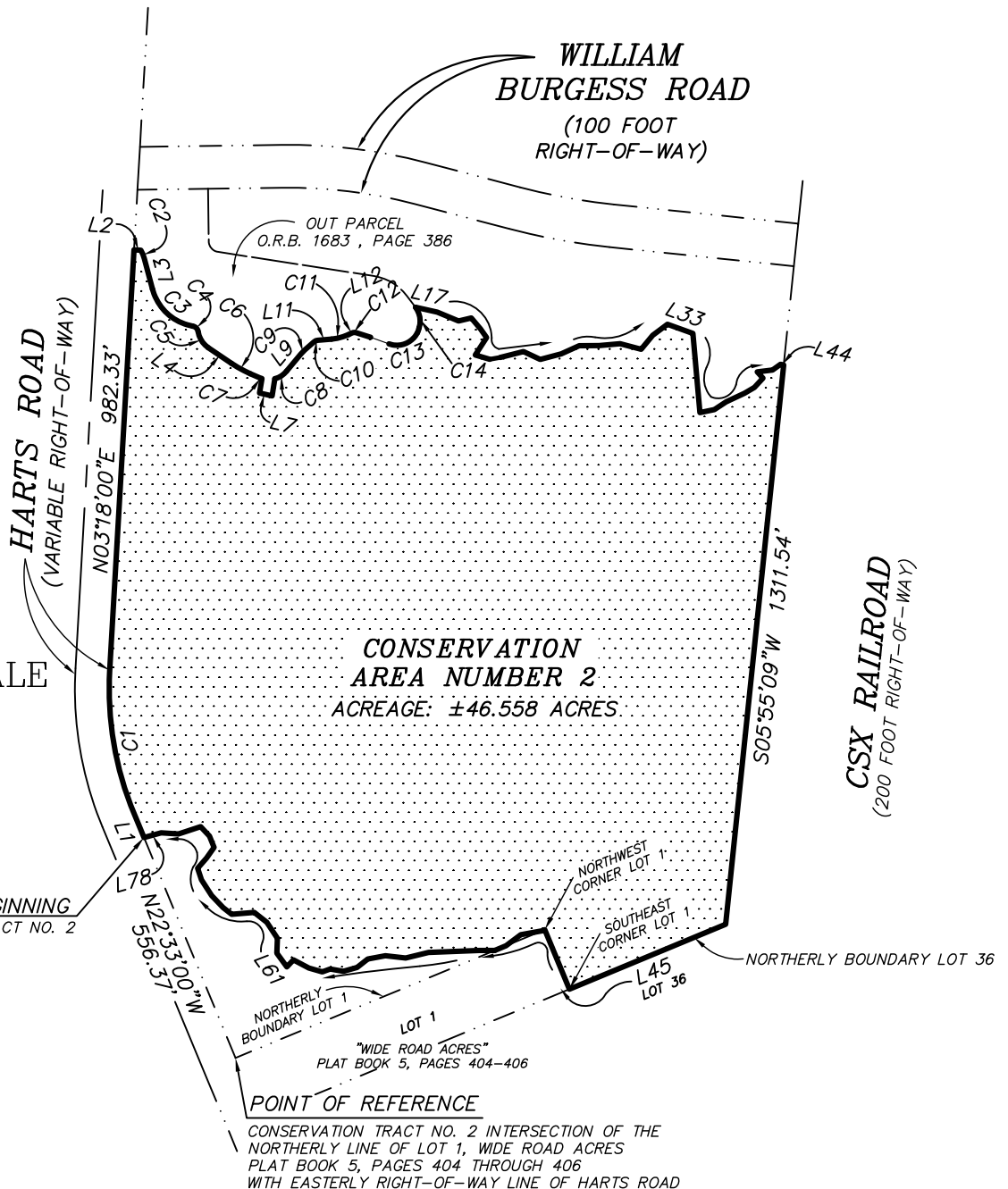


GRAPHIC SCALE

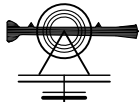


(IN FEET)
1 inch = 400 ft.

POINT OF BEGINNING
CONSERVATION TRACT NO. 2



JOB NO. 16509
SHEET 9 OF 13



SKETCH OF LEGAL DESCRIPTION

(LEGAL DESCRIPTION ATTACHED)
(THIS IS NOT A BOUNDARY SURVEY)

LINE TABLE		
LINE	BEARING	LENGTH
L1	N22°33'00"W	60.48'
L2	S86°42'01"E	16.14'
L3	S14°51'24"E	73.49'
L4	S55°52'45"E	65.58'
L5	S66°34'10"E	23.64'
L6	S9°05'51"W	34.18'
L7	S77°04'57"E	30.07'
L8	N9°05'51"E	40.49'
L9	N39°32'16"E	52.11'
L10	N48°38'19"E	28.45'
L11	N85°06'10"E	32.03'
L12	N65°04'54"E	7.73'
L13	S72°11'32"E	34.19'
L14	S70°13'43"E	45.52'
L15	N27°31'34"E	3.94'
L16	N16°25'53"E	8.64'
L17	S77°25'42"E	52.20'
L18	S67°34'55"E	53.50'
L19	N76°54'47"E	30.51'
L20	S39°52'59"E	33.13'
L21	S35°29'24"E	24.81'

LINE TABLE		
LINE	BEARING	LENGTH
L22	S32°49'33"W	48.51'
L23	S73°28'39"E	34.94'
L24	N80°14'27"E	25.18'
L25	N75°56'13"E	55.61'
L26	S64°56'23"E	43.19'
L27	N75°06'23"E	50.69'
L28	N65°21'27"E	46.01'
L29	N89°43'15"E	46.41'
L30	N84°58'09"E	49.26'
L31	S75°04'48"E	50.71'
L32	N39°33'26"E	42.55'
L33	N53°07'21"E	42.88'
L34	S70°10'44"E	63.12'
L35	S5°03'52"E	185.58'
L36	N78°02'13"E	34.36'
L37	N56°22'11"E	32.56'
L38	N64°57'01"E	47.80'
L39	N59°13'55"E	26.49'
L40	N43°19'04"E	29.34'
L41	N41°51'03"W	19.99'
L42	N82°57'12"E	35.82'

LINE TABLE		
LINE	BEARING	LENGTH
L43	N54°57'25"E	22.97'
L44	S77°42'33"E	7.27'
L45	S67°26'51"W	394.32'
L46	N22°32'00"W	150.08'
L47	S67°28'19"W	7.26'
L48	S79°42'23"W	49.90'
L49	S53°15'48"W	43.08'
L50	S67°28'19"W	28.70'
L51	N89°37'32"W	35.47'
L52	S87°40'32"W	118.76'
L53	S76°15'29"W	55.10'
L54	N83°25'17"W	47.62'
L55	S79°25'13"W	41.79'
L56	S51°48'23"W	31.67'
L57	S74°00'40"W	33.20'
L58	N79°59'58"W	31.37'
L59	S69°57'13"W	19.25'
L60	N74°28'28"W	32.62'
L61	N62°09'03"W	40.79'
L62	S43°18'10"W	22.34'
L63	N35°57'02"W	39.51'

LINE TABLE		
LINE	BEARING	LENGTH
L64	N1°44'31"E	34.69'
L65	N33°09'58"W	44.67'
L66	N51°48'38"W	37.26'
L67	S85°22'56"W	53.12'
L68	N51°37'05"W	25.21'
L69	N43°58'29"W	38.60'
L70	N32°34'25"W	43.78'
L71	N18°47'25"W	28.53'
L72	N41°13'45"E	31.48'
L73	N35°23'26"E	30.58'
L74	N22°15'58"W	28.25'
L75	N42°53'40"W	30.29'
L76	S71°47'52"W	54.52'
L77	N86°22'20"W	40.36'
L78	S74°31'36"W	41.42'

CURVE TABLE					
CURVE	LENGTH	RADIUS	DELTA	CHORD BEARING	CHORD DISTANCE
C1	342.02'	758.08'	25°50'59"	N9°37'32"W	339.12'
C2	20.90'	81.00'	14°47'06"	S22°14'53"E	20.84'
C3	134.79'	119.00'	64°53'51"	S47°18'19"E	127.70'
C4	19.89'	16.00'	71°14'17"	S44°08'06"E	18.64'
C5	44.64'	54.00'	47°21'47"	S32°11'51"E	43.38'
C6	50.19'	269.00'	10°41'26"	S61°13'28"E	50.12'
C7	5.86'	54.00'	6°13'00"	S69°40'40"E	5.86'
C8	33.06'	54.00'	35°04'47"	N57°04'40"E	32.55'
C9	12.87'	81.00'	9°06'02"	N44°05'17"E	12.85'
C10	10.18'	16.00'	36°27'51"	N66°52'14"E	10.01'
C11	41.58'	119.00'	20°01'16"	N75°05'32"E	41.37'
C12	11.93'	16.00'	42°43'34"	N86°26'41"E	11.66'
C13	77.51'	54.00'	82°14'43"	N68°38'56"E	71.03'
C14	48.48'	54.00'	53°20'33"	N10°14'23"W	48.48'

JOB NO. 16509
SHEET 10 OF 13

CONSERVATION
AREA NUMBER 2



MANZIE & DRAKE LAND SURVEYING



LEGAL DESCRIPTION CONSERVATION AREA No. 2 OCTOBER 18, 2017

A PORTION OF THE JOHN LOWE MILL GRANT, SECTION 42, TOWNSHIP 2 NORTH, RANGE 27 EAST, NASSAU COUNTY, FLORIDA, BEING MORE PARTICULARLY DESCRIBED AS FOLLOWS:

FOR A POINT OF REFERENCE COMMENCE AT THE INTERSECTION OF THE NORTHERLY LINE OF LOT 1, "WIDE ROAD ACRES", ACCORDING TO THE PLAT THEREOF RECORDED IN PLAT BOOK 5, PAGES 404-406, OF THE PUBLIC RECORDS OF NASSAU COUNTY, FLORIDA, WITH THE EASTERLY RIGHT-OF-WAY LINE OF HARTS ROAD, AN 80 FOOT RIGHT-OF-WAY AS NOW LAID OUT AND IN USE; THENCE ALONG SAID EASTERLY RIGHT-OF-WAY LINE, NORTH 22°33'00" WEST, A DISTANCE OF 556.37 FEET TO THE **POINT OF BEGINNING**; THENCE CONTINUE NORTH 22°33'00" WEST ALONG SAID RIGHT-OF-WAY LINE A DISTANCE OF 60.48 FEET TO THE POINT OF CURVATURE OF A RIGHT-OF-WAY CURVE CONCAVE EASTERLY, HAVING A RADIUS OF 758.08 FEET AND A CENTRAL ANGLE OF 25°50'59"; THENCE NORTHWESTERLY ALONG SAID RIGHT-OF-WAY CURVE AN ARC DISTANCE OF 342.02 FEET, BEING SUBTENDED BY A CHORD BEARING NORTH 09°37'32" WEST A DISTANCE OF 339.12 FEET, TO THE POINT OF TANGENCY OF SAID CURVE; THENCE CONTINUE ALONG SAID EASTERLY RIGHT-OF-WAY LINE, NORTH 03°18'00" EAST A DISTANCE OF 982.33 FEET TO THE SOUTHWESTERLY CORNER OF THE PROPERTY DESCRIBED IN OFFICIAL RECORDS BOOK 1683, PAGE 386 OF THE AFORESAID PUBLIC RECORDS OF NASSAU COUNTY; THENCE DEPARTING THE EASTERLY RIGHT-OF-WAY LINE OF HARTS ROAD ALONG THE SOUTHERLY BOUNDARY OF SAID PROPERTY, SOUTH 86°42'01" EAST A DISTANCE OF 16.14 FEET TO A POINT ON A NON-TANGENT CURVE CONCAVE WESTERLY, HAVING A RADIUS OF 81.00 FEET AND A CENTRAL ANGLE OF 14°47'06"; THENCE SOUTHEASTERLY ALONG SAID BOUNDARY CURVE AN ARC DISTANCE OF 20.90 FEET, SUBTENDED BY A CHORD BEARING AND DISTANCE OF SOUTH 22°14'53" EAST 20.84 FEET, TO THE POINT OF TANGENCY OF SAID CURVE; THENCE CONTINUE ALONG SAID SOUTHERLY BOUNDARY, SOUTH 14°51'24" EAST A DISTANCE OF 73.49 FEET TO THE POINT OF CURVATURE OF A CURVE CONCAVE NORTHEASTERLY, HAVING A RADIUS OF 119.00 FEET AND A CENTRAL ANGLE OF 64°53'51"; THENCE SOUTHEASTERLY ALONG SAID BOUNDARY CURVE AN ARC DISTANCE OF 134.79 FEET, SUBTENDED BY A CHORD BEARING AND DISTANCE OF SOUTH 47°18'19" EAST 127.70 FEET, TO THE POINT OF REVERSE CURVATURE OF A CURVE CONCAVE SOUTHWESTERLY, HAVING A RADIUS OF 16.00 FEET AND A CENTRAL ANGLE OF 71°14'17"; THENCE SOUTHEASTERLY ALONG SAID BOUNDARY CURVE AN ARC DISTANCE OF 19.89 FEET, SUBTENDED BY A CHORD BEARING AND DISTANCE OF SOUTH 44°08'06" EAST 18.64 FEET, TO THE POINT OF REVERSE CURVATURE OF A CURVE CONCAVE NORTHEASTERLY, HAVING A RADIUS OF 54.00 FEET AND A CENTRAL ANGLE OF 47°21'47"; THENCE SOUTHEASTERLY ALONG SAID BOUNDARY CURVE AN ARC DISTANCE OF 44.64 FEET, SUBTENDED BY A CHORD BEARING AND DISTANCE OF SOUTH 32°11'51" EAST 43.38 FEET, TO THE POINT OF TANGENCY OF SAID CURVE; THENCE CONTINUE ALONG SAID SOUTHERLY BOUNDARY, SOUTH 55°52'45" EAST A DISTANCE OF 65.58 FEET TO THE POINT OF CURVATURE OF A CURVE CONCAVE NORTHEASTERLY, HAVING A RADIUS OF 269.00 AND A CENTRAL ANGLE OF 10°41'26"; THENCE SOUTHEASTERLY ALONG SAID BOUNDARY CURVE AN ARC DISTANCE OF 50.19 FEET, SUBTENDED BY A CHORD BEARING AND DISTANCE OF SOUTH 61°13'28" EAST 50.12 FEET, TO THE POINT OF TANGENCY OF SAID CURVE; THENCE CONTINUE ALONG SAID SOUTHERLY BOUNDARY, SOUTH 66°34'10" EAST A DISTANCE OF 23.64 FEET TO THE POINT OF CURVATURE OF A CURVE CONCAVE NORTHEASTERLY, HAVING A RADIUS OF 54.00 FEET AND A CENTRAL ANGLE OF 06°13'00"; THENCE SOUTHEASTERLY ALONG SAID BOUNDARY CURVE AN ARC DISTANCE OF 5.86 FEET, SUBTENDED BY A CHORD BEARING AND DISTANCE OF SOUTH 69°40'40" EAST 5.86 FEET; THENCE DEPARTING SAID CURVE NON-RADIALLY AND CONTINUING ALONG SAID

SHEET 11 OF 13

117 SOUTH 9TH STREET, FERNANDINA BEACH, FL 32034
OFFICE (904) 491-5700 • FAX (904) 491-5777 • TOLL FREE (888) 832-7730
www.manzieanddrake.com



MANZIE & DRAKE LAND SURVEYING



SOUTHERLY BOUNDARY, SOUTH 09°05'51" WEST A DISTANCE OF 34.18 FEET; THENCE CONTINUING ALONG SAID SOUTHERLY BOUNDARY, SOUTH 77°04'57" EAST A DISTANCE OF 30.07 FEET; THENCE CONTINUING ALONG SAID SOUTHERLY BOUNDARY, NORTH 09°05'51" EAST A DISTANCE OF 40.49 FEET TO A POINT ON A NON-TANGENT CURVE CONCAVE NORTHWESTERLY, HAVING A RADIUS OF 54.00 FEET AND A CENTRAL ANGLE OF 35°04'47"; THENCE NORTHEASTERLY ALONG SAID BOUNDARY CURVE AN ARC DISTANCE OF 33.06 FEET, SUBTENDED BY A BEARING AND DISTANCE OF NORTH 57°04'40" EAST 32.55 FEET, TO THE POINT OF TANGENCY OF SAID CURVE; THENCE CONTINUING ALONG SAID SOUTHERLY BOUNDARY, NORTH 39°32'16" EAST A DISTANCE OF 52.11 FEET TO THE POINT OF CURVATURE OF A CURVE CONCAVE SOUTHEASTERLY, HAVING A RADIUS OF 81.00 FEET AND A CENTRAL ANGLE OF 09°06'02"; THENCE NORTHEASTERLY ALONG SAID BOUNDARY CURVE AN ARC DISTANCE OF 12.87 FEET, SUBTENDED BY A CHORD BEARING AND DISTANCE OF NORTH 44°05'17" EAST 12.85 FEET, TO THE POINT OF TANGENCY OF SAID CURVE; THENCE CONTINUE ALONG SAID SOUTHERLY BOUNDARY, NORTH 48°38'19" EAST A DISTANCE OF 28.45 FEET TO THE POINT OF CURVATURE OF A CURVE CONCAVE SOUTHEASTERLY, HAVING A RADIUS OF 16.00 FEET AND A CENTRAL ANGLE OF 36°27'51"; THENCE NORTHEASTERLY ALONG SAID BOUNDARY CURVE AN ARC DISTANCE OF 10.18 FEET, SUBTENDED BY A CHORD BEARING AND DISTANCE OF NORTH 66°52'14" EAST 10.01 FEET, TO THE POINT OF TANGENCY OF SAID CURVE; THENCE CONTINUE ALONG SAID SOUTHERLY BOUNDARY, NORTH 85°06'10" EAST A DISTANCE OF 32.03 FEET TO THE POINT OF CURVATURE OF A CURVE CONCAVE NORTHWESTERLY, HAVING A RADIUS OF 119.00 FEET AND A CENTRAL ANGLE OF 20°01'16"; THENCE NORTHEASTERLY ALONG SAID BOUNDARY CURVE AND ARC DISTANCE OF 41.58 FEET, SUBTENDED BY A CHORD BEARING AND DISTANCE ON NORTH 75°05'32" EAST 41.37 FEET, TO THE POINT OF TANGENCY OF SAID CURVE; THENCE CONTINUE ALONG SAID SOUTHERLY BOUNDARY, NORTH 65°04'54" EAST A DISTANCE OF 7.73 FEET TO THE POINT OF CURVATURE OF A CURVE CONCAVE SOUTHERLY, HAVING A RADIUS OF 16.00 FEET AND A CENTRAL ANGLE OF 42°43'34"; THENCE NORTHEASTERLY ALONG SAID BOUNDARY CURVE AN ARC DISTANCE OF 11.93 FEET, SUBTENDED BY A CHORD BEARING AND DISTANCE OF NORTH 86°26'41" EAST 11.66 FEET, TO THE POINT OF TANGENCY OF SAID CURVE; THENCE CONTINUE ALONG SAID SOUTHERLY BOUNDARY, SOUTH 72°11'32" EAST A DISTANCE OF 34.19 FEET; THENCE CONTINUE ALONG SAID SOUTHERLY BOUNDARY SOUTH 70°13'43" EAST A DISTANCE OF 45.52 FEET TO THE POINT OF CURVATURE OF A CURVE CONCAVE NORTHWESTERLY, HAVING A RADIUS OF 54.00 FEET AND A CENTRAL ANGLE OF 82°14'43"; THENCE NORTHEASTERLY ALONG SAID BOUNDARY CURVE AN ARC DISTANCE OF 77.51 FEET, SUBTENDED BY A CHORD BEARING AND DISTANCE OF NORTH 68°38'56" EAST 71.03 FEET, TO THE POINT OF TANGENCY OF SAID CURVE; THENCE CONTINUE ALONG SAID SOUTHERLY BOUNDARY, NORTH 27°31'34" EAST A DISTANCE OF 3.94 FEET; THENCE CONTINUE ALONG SAID SOUTHERLY BOUNDARY, NORTH 16°25'53" EAST A DISTANCE OF 8.64 FEET TO THE POINT OF CURVATURE OF A CURVE CONCAVE WESTERLY, HAVING A RADIUS OF 54.00 FEET AND A CENTRAL ANGLE OF 53°20'33"; THENCE NORTHWESTERLY ALONG SAID BOUNDARY CURVE AN ARC DISTANCE OF 48.48 FEET, SUBTENDED BY A CHORD BEARING AND DISTANCE OF NORTH 10°14'23" WEST 48.48 FEET, TO THE POINT OF TANGENCY OF SAID CURVE; THENCE DEPARTING SAID SOUTHERLY BOUNDARY, SOUTH 77°25'42" EAST A DISTANCE OF 52.20 FEET; THENCE SOUTH 67°34'55" EAST A DISTANCE OF 53.50 FEET; THENCE NORTH 76°54'47" EAST A DISTANCE OF 30.51 FEET; THENCE SOUTH 39°52'59" EAST A DISTANCE OF 33.13 FEET; THENCE SOUTH 35°29'24" EAST A DISTANCE OF 24.81 FEET; THENCE SOUTH 32°49'33" WEST A DISTANCE OF 48.51 FEET; THENCE SOUTH 73°28'39" EAST A DISTANCE OF 34.94 FEET; THENCE NORTH 80°14'27" EAST A DISTANCE OF 25.18 FEET; THENCE NORTH 75°56'13" EAST A DISTANCE OF 55.61 FEET; THENCE SOUTH 64°56'23" EAST A DISTANCE OF 43.19 FEET; THENCE NORTH 75°06'23" EAST A DISTANCE OF 50.69 FEET; THENCE NORTH 65°21'27" EAST A DISTANCE OF 46.01 FEET; THENCE NORTH 89°43'15" EAST A DISTANCE OF 46.41 FEET; THENCE NORTH 84°58'09" EAST A DISTANCE OF

SHEET 12 OF 13

117 SOUTH 9TH STREET, FERNANDINA BEACH, FL 32034

OFFICE (904) 491-5700 • FAX (904) 491-5777 • TOLL FREE (888) 832-7730

www.manzieanddrake.com



MANZIE & DRAKE LAND SURVEYING



49.26 FEET; THENCE SOUTH 75°04'48" EAST A DISTANCE OF 50.71 FEET; THENCE NORTH 39°33'26" EAST A DISTANCE OF 42.55 FEET; THENCE NORTH 53°07'21" EAST A DISTANCE OF 42.88 FEET; THENCE SOUTH 70°10'44" EAST A DISTANCE OF 63.12 FEET; THENCE SOUTH 05°03'52" EAST A DISTANCE OF 185.58 FEET; THENCE NORTH 78°02'13" EAST A DISTANCE OF 34.36 FEET; THENCE NORTH 56°22'11" EAST A DISTANCE OF 32.56 FEET; THENCE NORTH 64°57'01" EAST A DISTANCE OF 47.80 FEET; THENCE NORTH 59°13'55" EAST A DISTANCE OF 26.49 FEET; THENCE NORTH 43°19'04" EAST A DISTANCE OF 29.34 FEET; THENCE NORTH 41°51'03" WEST A DISTANCE OF 19.99 FEET; THENCE NORTH 82°57'12" EAST A DISTANCE OF 35.82 FEET; THENCE NORTH 54°57'25" EAST A DISTANCE OF 22.97 FEET; THENCE SOUTH 77°42'33" EAST A DISTANCE OF 7.27 FEET TO THE WESTERLY RIGHT-OF-WAY LINE OF THE CSX RAILROAD (200 FEET WIDE); SOUTH 05°55'09" WEST ALONG SAID WESTERLY RIGHT-OF-WAY LINE A DISTANCE OF 1311.54 FEET TO THE NORTHEASTERLY CORNER OF LOT 36 OF AFORESAID "WIDE ROAD ACRES"; THENCE DEPARTING SAID RIGHT-OF-WAY LINE ALONG THE NORTHERLY BOUNDARY OF SAID LOT 36, SOUTH 67°26'51" WEST A DISTANCE OF 394.32 FEET TO THE SOUTHEASTERLY CORNER OF AFORESAID LOT 1 OF "WIDE ROAD ACRES"; THENCE NORTH 22°32'00" WEST ALONG THE EASTERLY BOUNDARY OF SAID LOT 1 A DISTANCE OF 150.08 FEET TO THE NORTHEASTERLY CORNER OF LOT 1; THENCE SOUTH 67°28'19" WEST ALONG THE NORTH BOUNDARY OF LOT 1 A DISTANCE OF 7.26 FEET; THENCE DEPARTING SAID NORTH BOUNDARY, SOUTH 79°42'23" WEST A DISTANCE OF 49.90 FEET; THENCE SOUTH 53°15'48" WEST A DISTANCE OF 43.08 FEET TO A POINT ON SAID NORTH BOUNDARY OF LOT 1; THENCE SOUTH 67°28'19" WEST ALONG SAID NORTH BOUNDARY A DISTANCE OF 28.70 FEET; THENCE DEPARTING SAID NORTH BOUNDARY, NORTH 89°37'32" WEST A DISTANCE OF 35.47 FEET; THENCE SOUTH 87°40'32" WEST A DISTANCE OF 118.26 FEET; THENCE SOUTH 76°15'29" WEST A DISTANCE OF 55.10 FEET; THENCE NORTH 83°25'17" WEST A DISTANCE OF 47.62 FEET; THENCE SOUTH 79°25'13" WEST A DISTANCE OF 41.79 FEET; THENCE SOUTH 51°48'23" WEST A DISTANCE OF 31.67 FEET; THENCE SOUTH 74°00'40" WEST A DISTANCE OF 33.20 FEET; THENCE NORTH 79°59'58" WEST A DISTANCE OF 31.37 FEET; THENCE SOUTH 69°57'13" WEST A DISTANCE OF 19.25 FEET; THENCE NORTH 74°28'28" WEST A DISTANCE OF 32.62 FEET; THENCE NORTH 62°09'03" WEST A DISTANCE OF 40.79 FEET; THENCE SOUTH 43°18'10" WEST A DISTANCE OF 22.34 FEET; THENCE NORTH 35°57'02" WEST A DISTANCE OF 39.51 FEET; THENCE NORTH 01°44'31" EAST A DISTANCE OF 34.69 FEET; THENCE NORTH 33°09'58" WEST A DISTANCE OF 44.67 FEET; THENCE NORTH 51°48'38" WEST A DISTANCE OF 37.26 FEET; THENCE SOUTH 85°22'56" WEST A DISTANCE OF 53.12 FEET; THENCE NORTH 51°37'05" WEST A DISTANCE OF 25.21 FEET; THENCE NORTH 43°58'29" WEST A DISTANCE OF 38.60 FEET; THENCE NORTH 32°34'25" WEST A DISTANCE OF 43.78 FEET; THENCE NORTH 18°47'25" WEST A DISTANCE OF 28.53 FEET; THENCE NORTH 41°13'45" EAST A DISTANCE OF 31.48 FEET; THENCE NORTH 35°23'26" EAST A DISTANCE OF 30.58 FEET; THENCE NORTH 22°15'58" WEST A DISTANCE OF 28.25 FEET; THENCE NORTH 42°53'40" WEST A DISTANCE OF 30.29 FEET; THENCE SOUTH 71°47'52" WEST A DISTANCE OF 54.52 FEET; THENCE NORTH 86°22'20" WEST A DISTANCE OF 40.36 FEET; THENCE SOUTH 74°31'36" WEST A DISTANCE OF 41.42 FEET TO THE POINT OF BEGINNING.

CONTAINING 46.558 ACRES MORE OR LESS.

 2705717

GUY L. MELVIN, P.L.S.
FLORIDA REGISTRATION NO. 4729
JOB # 16509

SHEET 13 OF 13

117 SOUTH 9TH STREET, FERNANDINA BEACH, FL 32034
OFFICE (904) 491-5700 • FAX (904) 491-5777 • TOLL FREE (888) 832-7730
www.manzieanddrake.com