



Source: Esri, DigitalGlobe, GeoEye, Earthstar Geographics, CNES/Airbus DS, USDA, USGS, AeroGRID, IGN, and the GIS User Community

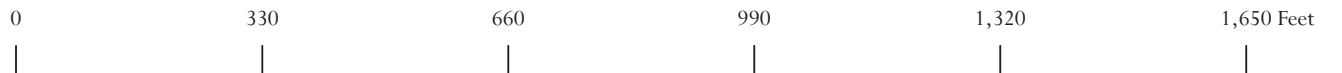
NASSAU COUNTY WILLIAM BURGESS EXTENSION

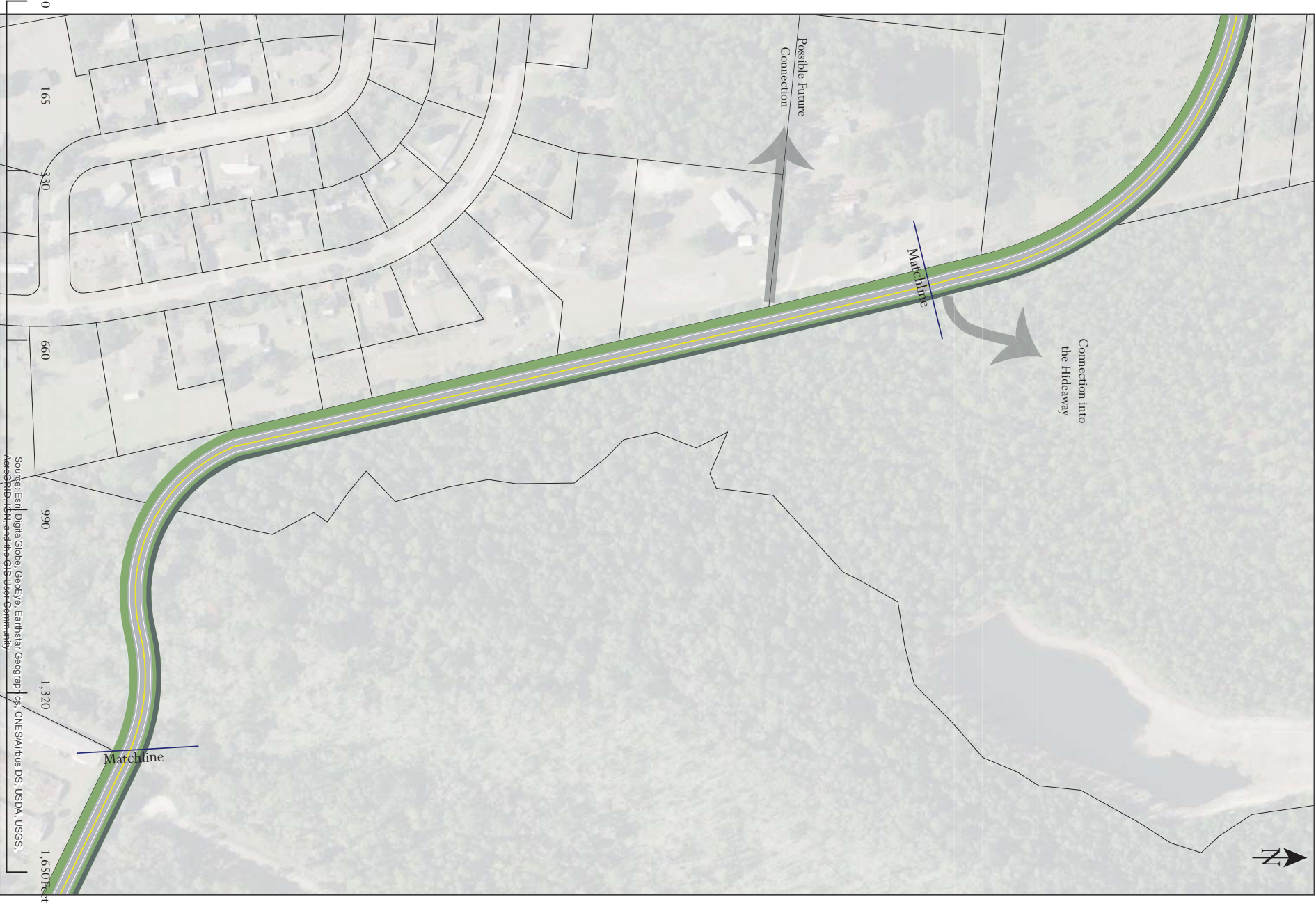
Conceptual Striping Plan - Sheet 2



Legend

- Dark Grey - Multi-Use Path
- Green - Right-of-Way (Swales)
- Light Grey - Travel Lanes
- Yellow - Center Line Striping
- White - Shoulder Delineation





Connection into
the Hideaway

Possible Future
Connection

Matchline

Matchline

0
165
330
660
990
1,320
1,650 Feet

NASSAU COUNTY WILLIAM BURGESS EXTENSION

Conceptual Striping Plan - Sheet 3



- Legend**
- Dark Grey - Multi-Use Path
 - Green - Right-of-Way (Swales)
 - Light Grey - Travel Lanes
 - Yellow - Center Line Striping
 - White - Shoulder Delineation

Source: Esri, DigitalGlobe, GeoEye, Earthstar Geographics, CNES/Airbus DS, USDA, USGS,
 AeroGRID, IGN, and the GIS User Community



Source: Esri, DigitalGlobe, GeoEye, Earthstar Geographics, CNES/Airbus DS, USDA, USGS, AeroGRID, IGN, and the GIS User Community

NASSAU COUNTY WILLIAM BURGESS EXTENSION

Conceptual Striping Plan - Sheet 4



- Dark Grey - Multi-Use Path
- Green - Right-of-Way (Swales)
- Light Grey - Travel Lanes
- Yellow - Center Line Striping
- White - Shoulder Delineation





Source: Esri, DigitalGlobe, GeoEye, Earthstar Geographics, CNES/Airbus DS, USDA, USGS, AeroGRID, IGN, and the GIS User Community

NASSAU COUNTY WILLIAM BURGESS EXTENSION

Conceptual Striping Plan - Sheet 5



- Dark Grey - Multi-Use Path
- Green - Right-of-Way (Swales)
- Light Grey - Travel Lanes
- Yellow - Center Line Striping
- White - Shoulder Delineation










Use existing lane configuration for school entrance. Tie multi-use trail into existing sidewalk.

Source: Esri, DigitalGlobe, GeoEye, Earthstar Geographics, CNES/Airbus DS, USDA, USGS, AeroGRID, IGN, and the GIS User Community

NASSAU COUNTY WILLIAM BURGESS EXTENSION

Conceptual Striping Plan - Sheet 6



-  Dark Grey - Multi-Use Path
-  Green - Right-of-Way (Swales)
-  Light Grey - Travel Lanes
-  Yellow - Center Line Striping
-  White - Shoulder Delineation

