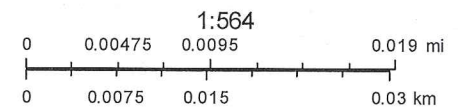


Drury Road

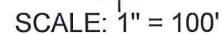


October 31, 2018

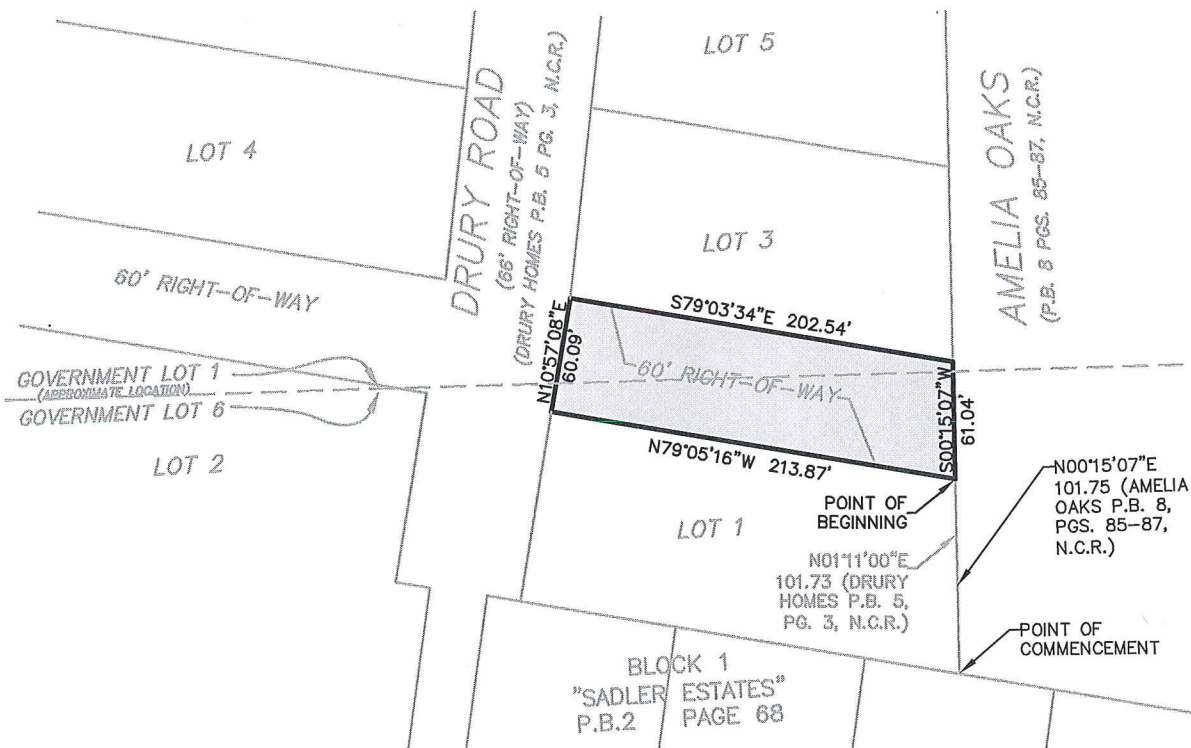
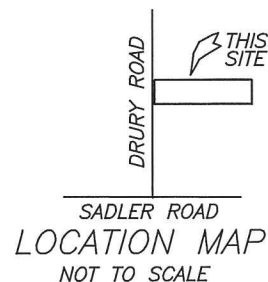


Esri, HERE, Garmin, © OpenStreetMap contributors, and the GIS user community
 Source: Esri, DigitalGlobe, GeoEye, Earthstar Geographics, CNES/Airbus DS, USDA, USGS, AeroGRID, IGN, and the GIS User Community

PORTION OF 60' ROAD RIGHT-OF-WAY
DRURY HOMES PLAT
(PB 5, PG 3, N.C.R.)



P.G. = PAGE



1. THIS IS NOT A BOUNDARY SURVEY.
2. LANDS SHOWN HEREON WERE NOT ABSTRACTED BY SHAH, DROTOS & ASSOCIATES FOR EASEMENTS, RIGHTS-OF-WAY, OWNERSHIP OR OTHER INSTRUMENTS OF RECORD.

4. BEARINGS SHOWN HERON ARE
BASED ON N00°15'07"E FOR THE
WEST LINE OF THE PLAT OF
AMELIA OAKS (P.B. 8, PG. 85
N.C.R.)

MAY 08 2018

FOR THE FIRM, BY: